

# NM4-RG

## 4" M4 Round Can-less LED Recessed Gimbal

Source: 12W LED  
950lm

Type

Project

Catalog No.

Notes

### PRODUCT DESCRIPTION

4" M4 Round LED adjustable gimbal are ideal for remodel or new constructions in residential and light commercial applications. IC Airtight rated luminaires require no housing, making installation easy.

### FEATURES

- 15° Adjustment
- No housing required - IC Airtight rated
- Easy installation for remodel or new construction applications
- Quick disconnect allows for extended lengths
- 2700K or 3000K @ 90+ CRI
- Triac or ELV dimming
- 5-year limited warranty
- cETLus Listed for Wet Locations

### SPECIFICATION

**Construction:** Die-cast aluminum trims with a powder-coated finish. Gimbal trim is adjustable up to 15°.

**Air Flow Restriction:** Luminaire has factory installed gasket to restrict airflow from room into ceiling plenum to <2CFM (cubic feet per minute) in accordance with ASTM 283 airtight requirements.

**Clearance:** IC rated luminaires are rated for direct contact with insulation (not spray foam insulation), no minimum clearance is required.

**Junction Box:** Prewired junction box includes quick connect to LED fixtures for ease of installation. Junction box includes four 1/2" trade size knockouts and snap on cover with 7" quick connect wire. Luminaire includes 5" quick connect wire.

**Maximum length between luminaire and driver is 40'. For longer remote driver remote run length, consult factory.**

**Mounting:** No housing is required, two tensions steel spring clips secure luminaire to ceiling. Accommodates ceiling thickness up to 3/4". New construction frame-in available, see mounting accessories.

### ELECTRICAL

**Input Voltage:** 120V  
**Lumens / Wattage:** 950lm / 12W  
**Color Temperature:** 2700K or 3000K  
**Color Rendering Index:** 90+ CRI  
**Beam Spread:** 28° Narrow Flood  
**Operating Temperature:** 0°C to 25°C  
**Lifetime:** 50,000 hours @ L70  
**Dimming:** Dimmable down to 10% with Triac or ELV  
[Click Here](#) or check complete dimmer list at [www.NoraLighting.com](http://www.NoraLighting.com) in the "Compatibility" page under "Resources" tab

### OPTIONAL ACCESSORIES

**NF-R246:** Universal New Construction Frame-In  
**NFC-R430:** New Construction Frame-In with Collar  
**NM2-EW-4:** 4' Quick Connect Linkable Extension Cable  
**NM2-EW-10:** 10' Quick Connect Linkable Extension Cable  
**NEPK-23LEDUNV:** 23W Emergency with Remote Test Switch  
**NEPKA-20/23LEDRTS:** Ribbon Test Switch for NEPK-23LEDUNV

**Emergency:** Luminaire is compatible with NEPK-23LEDUNV (ordered separately). Remote mounted battery operates luminaire for 90 minute emergency operation with a fully charged battery. Emergency includes remote test switch, ribbon test switch accessory (NEPKA-20/23LEDRTS) ordered separately.

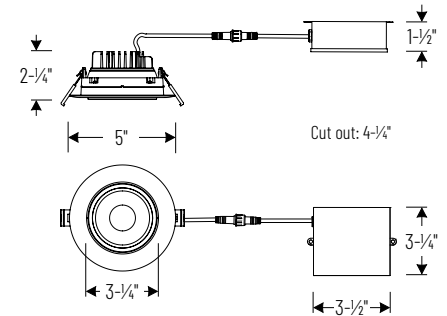
### LABELS AND LISTINGS

- cETLus Listed for Wet Locations
- [5-Year Limited Warranty](#)
- FCC compliant
- Certified to the high efficacy requirements of California Title 24 JA8-2025



Performance Data		
Part Number	Lumens	CCT
<b>NM4-RG27BB</b>	899lm	2700K
<b>NM4-RG27MPW</b>	957lm	2700K
<b>NM4-RG30BB</b>	897lm	3000K
<b>NM4-RG30MPW</b>	958lm	3000K

### PRODUCT IMAGES AND DIMENSIONS



## 4" M4 Round Can-less LED Recessed Gimbal

Color Temperature	Finish
<b>NM4-RG27</b> = 2700K	<b>BB</b> = Black
<b>NM4-RG30</b> = 3000K	<b>MPW</b> = White

## Optional Mounting Accessories

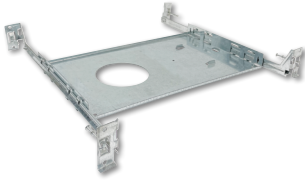
Accessory Type
<b>NF-R246</b> = Universal New Construction Frame-In
<b>NFC-R430</b> = New Construction Frame-In with Collar
<b>NM2-EW-4</b> = 4' Quick Connect Extension Cable
<b>NM2-EW-10</b> = 10' Quick Connect Extension Cable
<b>NEPK-23LEDUNV</b> = 23W Emergency LED Driver w/ Remote Test Switch
<b>NEPKA-20/23LEDRTS</b> = Ribbon Test Switch for NEPK-23LEDUNV

Example: **NM4-RGMPW** = 4" M4 Round Can-less LED Recessed Gimbal, 950lm / 12W, 3000K, White Finish

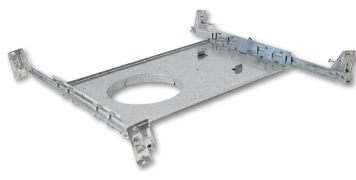
# NM4-RG

## 4" M4 Round Can-less LED Recessed Gimbal Accessories

Type	_____
Project	_____
Catalog No.	_____
Notes	_____



New Construction Frame-In



New Construction Frame-In with Collar



Quick Connect Extension Linkable Cables

### NF-R375

For new construction pre-wiring and easier layout planning.

### NFC-R430

New construction frame-in can be used to assist installing can-less recessed downlighting.

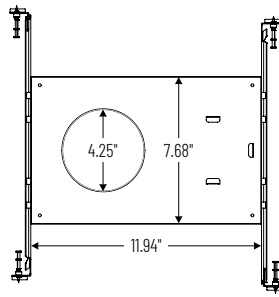
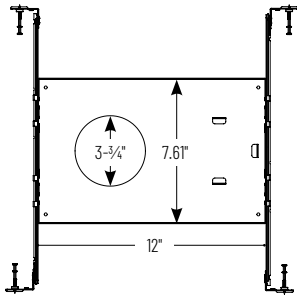
### NM2-EW-4

4' Cable

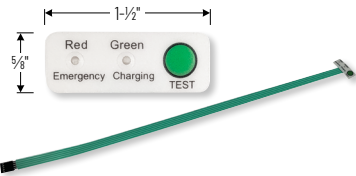
### NM2-EW-10

10' Cable

Use to extend the length between luminaire and driver enclosure. Can be connected together to create custom lengths. Maximum length between luminaire and driver is 40'. For longer remote driver remote run length, consult factory.



23W Emergency LED Driver with Remote Test Switch



Ribbon Test Switch for NEPK-23LEDUNV

### NEPK-23LEDUNV

120-277V Emergency battery operates luminaire for 90 minute emergency operation with a fully charged battery. Requires 24 hours to charge the battery.

### NEPKA-20/23LEDRTS

Ribbon test switch replaces remote test switch included with emergency driver. Double sided tape is pre-installed.

# PHOTOMETRICS

## 4" M4 Round Can-less LED Recessed Gimbal

Type \_\_\_\_\_

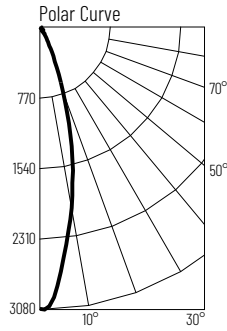
Project \_\_\_\_\_

Catalog No. \_\_\_\_\_

Notes \_\_\_\_\_

### Test Information

Test Number: NTR1857R1  
 Part Number: NM4-RG27MPW  
 Beam Spread: 28° Narrow Flood  
 Lumens: 957lm  
 Wattage: 11.76W  
 Efficacy: 81lpw  
 CCT / CRI: 2700K / 90 CRI  
 Spacing Criteria (0°-180°): 0.48  
 Spacing Criteria (90°-270°): 0.48



### Illuminance at a Distance

Distance from Luminaire	FC at Nadir	Beam Diameter
4'	191fc	2'
6'	85fc	3'
8'	47.8fc	4'
10'	30.6fc	5'-1"
12'	21.3fc	6'-1"

### Zonal Lumen Summary

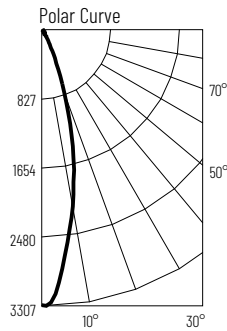
Zone	Lumens	% Luminaire
0-30	817	85.4
0-40	883	92.2
0-60	934	97.6
0-90	957	100
90-180	0	0
0-180	957	100

### Candela Table

Vertical Angles	Candela
0	3060
5	2683
15	1447
25	417
35	114
45	39

### Test Information

Test Number: NTR1878R1  
 Part Number: NM4-RG30MPW  
 Beam Spread: 27° Narrow Flood  
 Lumens: 958lm  
 Wattage: 11.67W  
 Efficacy: 82lpw  
 CCT / CRI: 3000K / 90 CRI  
 Spacing Criteria (0°-180°): 0.46  
 Spacing Criteria (90°-270°): 0.46



### Illuminance at a Distance

Distance from Luminaire	FC at Nadir	Beam Diameter
4'	206fc	1'-11"
6'	91.7fc	2'-11"
8'	51.6fc	3'-10"
10'	33fc	4'-10"
12'	22.9fc	5'-8"

### Zonal Lumen Summary

Zone	Lumens	% Luminaire
0-30	819	85.5
0-40	882	92.1
0-60	934	97.5
0-90	958	100
90-180	0	0
0-180	958	100

### Candela Table

Vertical Angles	Candela
0	3299
5	2874
15	1420
25	390
35	114
45	40

### Finish Multiplier

Finish: Black (x0.94), White (x1.0)