

NLTH-61TW

6" Theia LED Downlight with Selectable CCT

Source: 15W

Up to 1400lm

Type

Project

Catalog No.

Notes

PRODUCT DESCRIPTION

Theia LED luminaires are commercial grade downlights designed for easy installation into new construction or remodel applications. Luminaires include a selectable color temperature switch located on the junction box of each luminaire with a quick connect that allows for easy disconnect and mounting in the ceiling.

FEATURES

- Five color temperatures in each fixture (2700K / 3000K / 3500K / 4000K / 5000K)
- No housing required and includes junction box with class 2 driver
- Quick installation and cost savings
- IC Airtight rated
- cETLus Listed for Wet Locations
- 5-year limited warranty

SPECIFICATION

Construction: Aluminum luminaire with spring clips for easy installation. Gasket included for airtight and wet location listing without additional caulking. Flanged reflector with a powder-coated finish.

Air Flow Restriction: Luminaire has factory installed gasket to restrict airflow from room into ceiling plenum to <2CFM (cubic feet per minute) in accordance to ASTM E283.

Junction Box: Prewired junction box includes quick connect to LED fixtures for ease of installation. Junction box includes four 1/2" knockouts, two keyhole slots and snap on cover. Maximum of 6 No. 12 AWG or Maximum of 8 No. 14 AWG through branch circuit conductor suitable for 90°C permitted in box. [Fixture wire length: 7-1/2" and Junction box wire length: 10-1/2"]

Mounting: No housing is required, two tensions steel spring clips secure luminaires to the ceiling. Luminaires accept ceiling thicknesses from 3/8" to 1-1/4". New construction frame-in or plate are available (ordered separately), not required.

Minimum clearance: "IC" Insulated ceiling luminaires are direct contact rated; no minimum clearance is required.

ELECTRICAL

Voltage: 120VAC (blank) or 120-277VAC (LE4), must specify
Lumens / Wattage: Up to 1400lm / 15W

Color Temperature:

Selectable CCT: 2700K / 3000K / 3500K / 4000K / 5000K
(Note: Preset to 3000K)

Color Rendering Index: 90+ CRI

Beam Spread: 98° Wide Flood

Operating Temperature: 0°C to 35°C

Lifetime: 50,000 hours @ L70

Dimming: Triac/ELV (blank) or 0-10V (LE4), must specify

[Click Here](#) or check complete dimmer list at www.NoraLighting.com in the "Compatibility" page under "Resources" tab

OPTIONAL ACCESSORIES

NF-R246: Universal New Construction Frame-In

NOZ-6R-F: New Construction Frame-In with Collar

NFP-R413: New Construction Plate

NEPK-23LEDUNV: 23W Emergency with Remote Test Switch

NEPKA-20/23LEDRTS: Ribbon Test Switch for NEPK-23LEDUNV

Emergency: Luminaire is compatible with NEPK-23LEDUNV (ordered separately). Remote mounted battery operates luminaire for 90 minute emergency operation with a fully charged battery. Emergency includes remote test switch, ribbon test switch accessory (NEPKA-20/23LEDRTS) ordered separately.

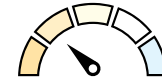
LABELS AND LISTINGS

- cETLus Listed for Wet locations
- Airtight in accordance to ASTM E283
- Certified to the high efficacy requirements of California Title 24 JA8-2025
- [5-Year Limited Warranty](#)
- FCC Compliant



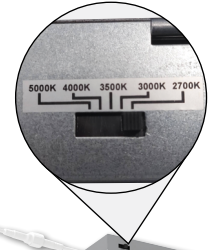
Performance Data		
Part Number	Lumens	CCT
NLTH-61TW-MPW	1285lm	2700K
NLTH-61TW-MPW	1361lm	3000K
NLTH-61TW-MPW	1421lm	3500K
NLTH-61TW-MPW	1444lm	4000K
NLTH-61TW-MPW	1445lm	5000K

PRODUCT IMAGES AND DIMENSIONS



Selectable CCT

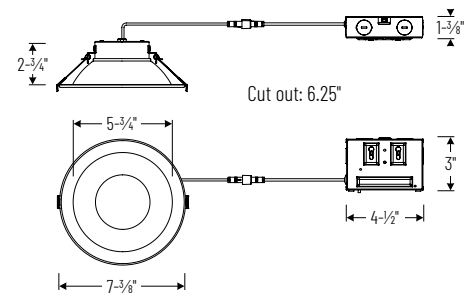
Five position sliding switch
 27K / 30K / 35K / 40K / 50K



NLTH-61TW-HZMPW
 Haze Reflector / White Flange



NLTH-61TW-MPW
 White Reflector / White Flange



6" Theia LED Downlight with Selectable CCT

Finish	Input Voltage / Dimming
NLTH-61TW-HZMPW = Haze Reflector / White Flange	(blank) = 120VAC; Triac/ELV dimming
NLTH-61TW-MPW = White Reflector / White Flange	LE4 = 120-277VAC; 0-10V dimming

Optional Accessories

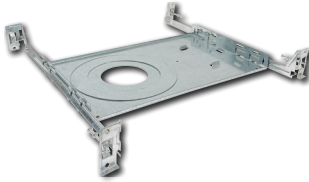
Description
NF-R246 = Universal New Construction Frame-In
NOZ-6R-F = New Construction Frame-In with Collar
NFP-R613 = New Construction Plate
NEPK-23LEDUNV = 23W Emergency LED Driver w/ Remote Test Switch
NEPKA-20/23LEDRTS = Ribbon Test Switch for NEPK-23LEDUNV

Example: NLTH-61TW-MPW = 6" Theia LED Downlight with Selectable CCT, White Reflector / White Flange, 120VAC input; Triac or ELV dimming

NLTH-61TW

6" Theia LED Downlight with Selectable CCT Accessories

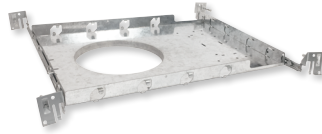
Type _____
 Project _____
 Catalog No. _____
 Notes _____



Universal New Construction Frame-In

NF-R246

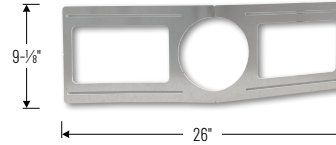
Universal new construction frame-in can be used to assist installing can-less recessed downlighting.



New Construction Frame-In with Collar

NQZ-6R-F

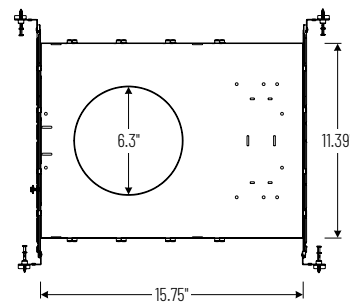
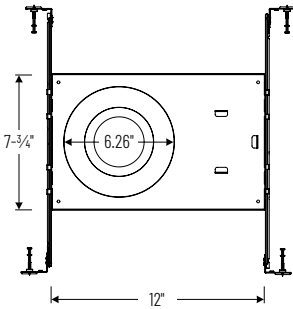
New construction frame-in with collar can be used to assist installing can-less recessed downlighting.



New Construction Plate

NFP-R613

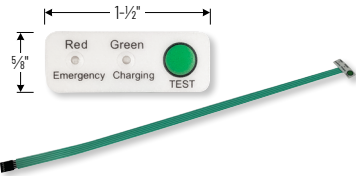
New construction plate can be used to assist installing canless recessed downlighting.



23W Emergency LED Driver with Remote Test Switch

NEPK-23LEDUNV

120-277V Emergency battery operates luminaire for 90 minute emergency operation with a fully charged battery. Requires 24 hours to charge the battery.



Ribbon Test Switch for NEPK-23LEDUNV

NEPKA-20/23LEDRTS

Ribbon test switch replaces remote test switch included with emergency driver. Double sided tape is pre-installed.

PHOTOMETRICS

6" Theia LED Tunable Downlight

Type

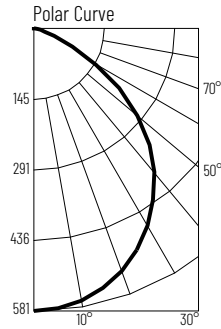
Project

Catalog No.

Notes

Test Information

Test Number: NTR1754R2
 Part Number: NLTH-61TW-MPW
 Beam Spread: 98° Wide Flood
 Lumens: 1285lm
 Wattage: 14.62W
 Efficacy: 88lpw
 CCT / CRI: 2700K / 90 CRI
 Spacing Criteria (0°-180°): 1.22
 Spacing Criteria (90°-270°): 1.22



Illuminance at a Distance

Distance from Luminaire	FC at Nadir	Beam Diameter
6'	16.1fc	13"-10"
8'	9.1fc	18"-5"
10'	5.8fc	23"-1"
12'	4fc	27"-8"
14'	3fc	32"-4"

Zonal Lumen Summary

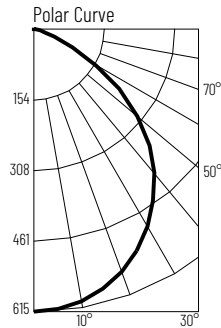
Zone	Lumens	% Luminaire
0-30	440	34.2
0-40	706	54.9
0-60	1156	89.9
0-90	1285	100
90-180	0	0
0-180	1285	100

Candela Table

Vertical Angles	Candela
0	581
5	578
15	553
25	502
35	430
45	339

Test Information

Test Number: NTR1755R2
 Part Number: NLTH-61TW-MPW
 Beam Spread: 98° Wide Flood
 Lumens: 1361lm
 Wattage: 14.38W
 Efficacy: 95lpw
 CCT / CRI: 3000K / 90 CRI
 Spacing Criteria (0°-180°): 1.22
 Spacing Criteria (90°-270°): 1.22



Illuminance at a Distance

Distance from Luminaire	FC at Nadir	Beam Diameter
6'	17.1fc	13"-10"
8'	9.6fc	18"-5"
10'	6.2fc	23"-1"
12'	4.3fc	27"-8"
14'	3.1fc	32"-4"

Zonal Lumen Summary

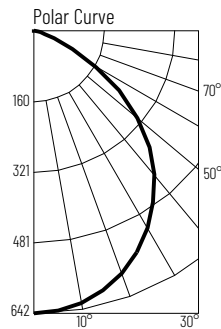
Zone	Lumens	% Luminaire
0-30	465	34.2
0-40	747	54.9
0-60	1224	89.9
0-90	1361	100
90-180	0	0
0-180	1361	100

Candela Table

Vertical Angles	Candela
0	615
5	612
15	585
25	532
35	454
45	359

Test Information

Test Number: NTR1756RR
 Part Number: NLTH-61TW-MPW
 Beam Spread: 98° Wide Flood
 Lumens: 1421lm
 Wattage: 14.04W
 Efficacy: 101lpw
 CCT / CRI: 3500K / 90 CRI
 Spacing Criteria (0°-180°): 1.22
 Spacing Criteria (90°-270°): 1.22



Illuminance at a Distance

Distance from Luminaire	FC at Nadir	Beam Diameter
6'	17.8fc	13"-10"
8'	10fc	18"-6"
10'	6.4fc	23"-1"
12'	4.5fc	27"-8"
14'	3.3fc	32"-4"

Zonal Lumen Summary

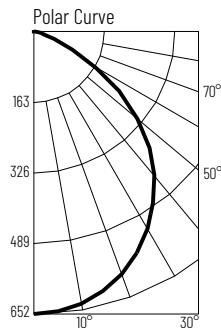
Zone	Lumens	% Luminaire
0-30	486	34.2
0-40	780	54.9
0-60	1277	89.9
0-90	1421	100
90-180	0	0
0-180	1421	100

Candela Table

Vertical Angles	Candela
0	642
5	639
15	610
25	555
35	474
45	375

Test Information

Test Number: NTR1757R2
 Part Number: NLTH-61TW-MPW
 Beam Spread: 98° Wide Flood
 Lumens: 1444lm
 Wattage: 14.19W
 Efficacy: 102lpw
 CCT / CRI: 4000K / 90 CRI
 Spacing Criteria (0°-180°): 1.2
 Spacing Criteria (90°-270°): 1.22



Illuminance at a Distance

Distance from Luminaire	FC at Nadir	Beam Diameter
6'	18.1fc	13"-10"
8'	10.2fc	18"-6"
10'	6.5fc	23"-1"
12'	4.5fc	27"-8"
14'	3.3fc	32"-4"

Zonal Lumen Summary

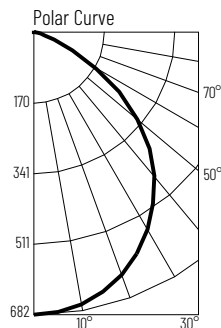
Zone	Lumens	% Luminaire
0-30	494	34.2
0-40	793	54.9
0-60	1298	89.9
0-90	1444	100
90-180	0	0
0-180	1444	100

Candela Table

Vertical Angles	Candela
0	652
5	650
15	620
25	562
35	481
45	380

Test Information

Test Number: NTR1758R2
 Part Number: NLTH-61TW-MPW
 Beam Spread: 95° Wide Flood
 Lumens: 1445lm
 Wattage: 14.63W
 Efficacy: 99lpw
 CCT / CRI: 5000K / 90 CRI
 Spacing Criteria (0°-180°): 1.2
 Spacing Criteria (90°-270°): 1.2



Illuminance at a Distance

Distance from Luminaire	FC at Nadir	Beam Diameter
6'	18.9fc	13"-4"
8'	10.7fc	17"-8"
10'	6.8fc	22"-2"
12'	4.7fc	26"-7"
14'	3.5fc	31"

Zonal Lumen Summary

Zone	Lumens	% Luminaire
0-30	515	35.7
0-40	824	57.1
0-60	1323	91.6
0-90	1445	100
90-180	0	0
0-180	1445	100

Candela Table

Vertical Angles	Candela
0	682
5	679
15	646
25	585
35	499
45	386