

NLTH-81TW

8" Theia LED Tunable Downlight

Source: 22W

Up to 2100lm

PRODUCT DESCRIPTION

Theia LED luminaires are commercial grade downlights designed for easy installation into new construction or remodel applications. Luminaires include a selectable color temperature switch located on the junction box of each luminaire with a quick connect that allows for easy disconnect and mounting in the ceiling.

FEATURES

- Five color temperatures in each fixture (2700K / 3000K / 3500K / 4000K / 5000K)
- No housing required and includes junction box with class 2 driver
- Quick installation and cost savings
- IC Air-Tight rated
- cETLus Listed for Wet Locations
- 5-year limited warranty

SPECIFICATION

Construction: Aluminum luminaire with spring clips for easy installation. Gasket included for air-tight and wet location listing without additional caulking.

Air Flow Restriction: Luminaire has factory installed gasket to restrict airflow from room into ceiling plenum to <2CFM (cubic feet per minute) in accordance with ASTM-283 Air-Tight requirements.

Junction Box: Prewired junction box includes quick connect to LED fixtures for ease of installation. Junction box includes four 1/2" knockouts, two keyhole slots and snap on cover. Maximum of 4 No. 12 AWG or Maximum of 6 No. 14 AWG through branch circuit conductor suitable for 90°C permitted in box. [Fixture wire length: 7-1/2" and Junction box wire length: 10-1/2"]

Mounting: No housing is required, two tensions steel spring clips secure luminaires to the ceiling. Luminaires accept ceiling thicknesses from 3/8" to 1-1/4". New construction frame-in or plate are available (ordered separately), not required.

Minimum clearance: "IC" Insulated ceiling luminaires are direct contact rated; no minimum clearance is required.

ELECTRICAL

Voltage: 120VAC (blank) or 120-277VAC (LE4), must specify

Lumens / Wattage: Up to 2100lm / 22W

Color Temperature: Selectable CCT: 2700K / 3000K / 3500K / 4000K / 5000K (*Note: Preset to 3000K*)

Color Rendering Index: 90+ CRI

Beam Spread: 94° Wide Flood

Operating Temperature: 0°C to 35°C ambient temperature

Lifetime: 50,000 hours @ L70

Dimming: Triac/ELV (blank) or 0-10V (LE4), must specify

[Click Here](#) or check complete dimmer list at [www.NoraLighting.com](#) in the "Compatibility" page under "Resources" tab

OPTIONAL ACCESSORIES

[NF-R725:](#) New Construction Frame-In

[NFC-R725:](#) New Construction Frame-In with Collar

[NFP-R725:](#) New Construction Plate

LABELS AND LISTINGS

- cETLus Listed for Wet location
- Certified to the high efficacy requirements of California Title 24 JA8-2022
- [5-Year Limited Warranty](#)
- FCC Compliant



Type
Project
Catalog No.
Notes

Performance Data		
Part Number	Lumens	CCT
NLTH-81TW-MPW	1920lm	2700K
NLTH-81TW-MPW	2039lm	3000K
NLTH-81TW-MPW	2112lm	3500K
NLTH-81TW-MPW	2148lm	4000K
NLTH-81TW-MPW	2082lm	5000K

PRODUCT IMAGES AND DIMENSIONS

Selectable CCT

Five position sliding switch
27K / 30K / 35K / 40K / 50K

NLTH-81TW-HZMPW
Haze Reflector / Matte Powder White Flange

NLTH-81TW-MPW
Matte Powder White Reflector / Matte Powder White Flange

8" Theia LED Downlight with Selectable CCT

Finish	Input Voltage / Dimming
NLTH-81TW-HZMPW = Haze Reflector / Matte Powder White Flange	(blank) = 120VAC; Triac/ELV dimming
NLTH-81TW-MPW = Matte Powder White Reflector / Matte Powder White Flange	LE4 = 120-277VAC; 0-10V dimming

Optional Accessories

Description
NF-R725 = New Construction Frame-In
NFC-R725 = New Construction Frame-In with Collar
NFP-R725 = New Construction Plate

Example: NLTH-81TW-MPW = 8" Theia LED Downlight with Selectable CCT, Matte Powder White Finish, 120VAC input; Triac or ELV dimming

NLTH-81TW

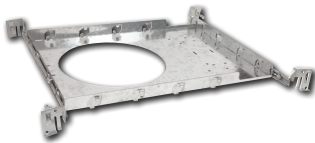
8" Theia LED Downlight with Selectable CCT Accessories

Type

Project

Catalog No.

Notes



New Construction Frame-In

NF-R725

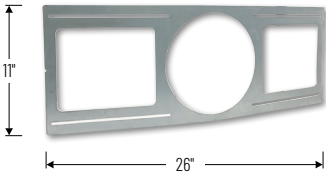
New construction frame-in can be used to assist installing can-less recessed downlighting.



New Construction Frame-In with Collar

NFC-R725

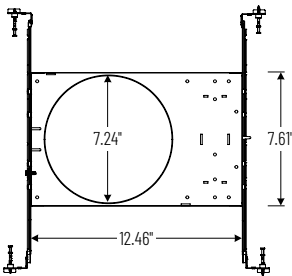
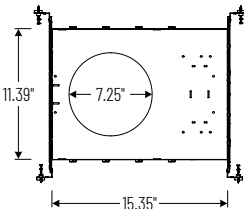
New construction frame-in with collar can be used to assist installing can-less recessed downlighting.



New Construction Plate

NFP-R725

New construction plate can be used to assist installing canless recessed downlighting.



PHOTOMETRICS

8" Theia LED Tunable Downlight

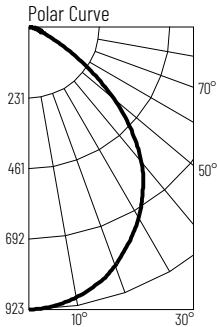
Type

Project

Catalog No.

Notes

Test Information
Test Number: NTRI770R2
Part Number: NLTH-81TW-MPW
Beam Spread: 94° Wide Flood
Lumens: 1920lm
Wattage: 21.01W
Efficacy: 91lpw
CCT / CRI: 2700K / 90 CRI
Spacing Criteria (0°-180°): 1.2
Spacing Criteria (90°-270°): 1.2



Illuminance at a Distance

Distance from Luminaire	FC at Nadir	Beam Diameter
12'	6.4fc	25'-11"
14'	4.7fc	30'-4"
16"	3.6fc	34'-7"
18"	2.9fc	38'-11"
20'	2.3fc	43'-2"

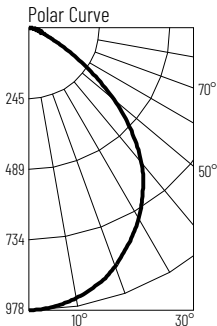
Zonal Lumen Summary

Zone	Lumens	% Luminaire
0-30	695	36.2
0-40	1113	58
0-60	1759	91.6
0-90	1920	100
90-180	0	0
0-180	1920	100

Candela Table

Vertical Angles	Candela
0	923
5	914
15	875
25	795
35	673
45	511

Test Information
Test Number: NTRI771R2
Part Number: NLTH-81TW-MPW
Beam Spread: 94° Wide Flood
Lumens: 2039lm
Wattage: 20.64W
Efficacy: 99lpw
CCT / CRI: 3000K / 90 CRI
Spacing Criteria (0°-180°): 1.2
Spacing Criteria (90°-270°): 1.2



Illuminance at a Distance

Distance from Luminaire	FC at Nadir	Beam Diameter
12'	6.8fc	26'
14'	5fc	30'-4"
16"	3.8fc	34'-7"
18"	3fc	38'-11"
20'	2.5fc	43'-4"

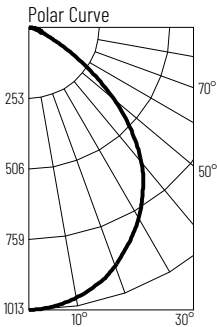
Zonal Lumen Summary

Zone	Lumens	% Luminaire
0-30	738	36.2
0-40	1183	58
0-60	1869	91.7
0-90	2039	100
90-180	0	0
0-180	2039	100

Candela Table

Vertical Angles	Candela
0	978
5	974
15	930
25	843
35	716
45	541

Test Information
Test Number: NTRI772R2
Part Number: NLTH-81TW-MPW
Beam Spread: 94° Wide Flood
Lumens: 2112lm
Wattage: 20.19W
Efficacy: 105lpw
CCT / CRI: 3500K / 90 CRI
Spacing Criteria (0°-180°): 1.2
Spacing Criteria (90°-270°): 1.2



Illuminance at a Distance

Distance from Luminaire	FC at Nadir	Beam Diameter
12'	7fc	26'
14'	5.2fc	30'-5"
16"	4fc	34'-8"
18"	3.1fc	39'
20'	2.5fc	43'-5"

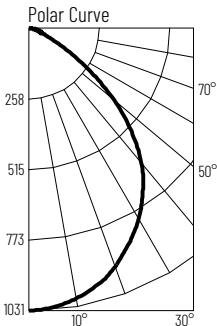
Zonal Lumen Summary

Zone	Lumens	% Luminaire
0-30	764	36.2
0-40	1224	58
0-60	1935	91.6
0-90	2112	100
90-180	0	0
0-180	2112	100

Candela Table

Vertical Angles	Candela
0	1013
5	1007
15	960
25	874
35	743
45	561

Test Information
Test Number: NTRI773R2
Part Number: NLTH-81TW-MPW
Beam Spread: 94° Wide Flood
Lumens: 2148lm
Wattage: 20.54W
Efficacy: 105lpw
CCT / CRI: 4000K / 90 CRI
Spacing Criteria (0°-180°): 1.2
Spacing Criteria (90°-270°): 1.2



Illuminance at a Distance

Distance from Luminaire	FC at Nadir	Beam Diameter
12'	7.2fc	26'
14'	5.3fc	30'-4"
16"	4fc	34'-7"
18"	3.2fc	38'-11"
20'	2.6fc	43'-4"

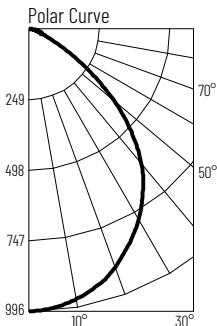
Zonal Lumen Summary

Zone	Lumens	% Luminaire
0-30	645	30
0-40	1056	49
0-60	1937	90.2
0-90	2148	100
90-180	0	0
0-180	2148	100

Candela Table

Vertical Angles	Candela
0	1031
5	1025
15	977
25	886
35	754
45	569

Test Information
Test Number: NTRI774R2
Part Number: NLTH-81TW-MPW
Beam Spread: 94° Wide Flood
Lumens: 2082lm
Wattage: 21W
Efficacy: 99lpw
CCT / CRI: 5000K / 90 CRI
Spacing Criteria (0°-180°): 1.2
Spacing Criteria (90°-270°): 1.2



Illuminance at a Distance

Distance from Luminaire	FC at Nadir	Beam Diameter
12'	6.9fc	26'
14'	5.1fc	30'-4"
16"	3.9fc	34'-7"
18"	3.1fc	39'
20'	2.5fc	43'-4"

Zonal Lumen Summary

Zone	Lumens	% Luminaire
0-30	752	36.1
0-40	1205	57.9
0-60	1906	91.5
0-90	2082	100
90-180	0	0
0-180	2082	100

Candela Table

Vertical Angles	Candela
0	996
5	991
15	946
25	863
35	730
45	552