

NIO-4RTLA

4" Iolite Round Trimless Adjustable with 10° Optic

Source: 12W
850lm

Type

Project

Catalog No.

Notes

PRODUCT DESCRIPTION

4" Trimless Iolite adjustable downlights have no exposed trim flange and do not extend beyond the ceiling plane. Iolite Trimless requires a Trimless Mud Ring and New Construction housing. Regressed cone reflector optimizes visual cut-off and adjust up to 35°.

FEATURES

- Trimless knife edge appearance
- Delivering up to 8163 center beam candlepower (CBCP)
- 2700K, 3000K, 3500K, 4000K @ 90+ CRI
- 10° TIR optic delivers luminous intensity of higher lumen downlights
- 35° adjustability
- 5-Year limited warranty

SPECIFICATION

Construction: Trims are constructed of heat dissipating, die-cast aluminum. The aluminum die-cast LED heat sink is threaded to fit the trim and transfer heat.

Mounting: Luminaire includes stainless steel friction clips to mount securely to trimless mud ring. Mud ring is required per trimless downlight.

OPTIC

Each luminaire includes 10° TIR optic (Note: cannot be changed in the field)
Luminaire is also available with field changeable optics, [Click Here](#) for more information.

ELECTRICAL

Lumens / Wattage: 850lm / 12W
Color Temperature: 2700K, 3000K, 3500K, 4000K
Color Rendering Index: 90+CRI
Operating Temperature: Specified by housing
Lifetime: 50,000 hours @ L70
Dimming: Specified by housing

COMPATIBLE HOUSINGS

luminaires are compatible with respective Iolite housings manufactured by Nora Lighting.

CATALOG NO.	DESCRIPTION
NHIOICD-48LE4	ICAT New Construction, 120-277V; Triac / ELV / 0-10V
NHIOICD-48LUPEQ	ICAT New Construction, 120/277V; Lutron EcoSystem
NHIOICDCP-48LE4	Chicago Plenum, 120-277V; Triac / ELV / 0-10V
NHIOICDCP-48LUPEQ	Chicago Plenum, 120/277V; Lutron EcoSystem

Accessories: Luminaire will accommodate (1) hex louver and (1) translucent deco collar or opaque snoot, no accessory holder is required, see page 2. A mud ring ([NIO-TLMR-4RA](#)) or flange accessory ([NIO-4RTFA](#)) is required per trimless.

LABELS AND LISTINGS

- cULus Listed for Damp Locations
- [5-Year Limited Warranty](#)
- RoHS Compliant
- Certified to the high efficacy requirements of California Title 24 JA8-2022

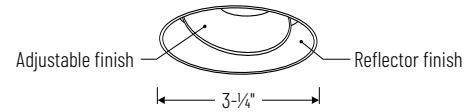


Performance Data

Part Number	Lumens	CCT	CBCP
NIO-4RTLA40QWW	884lm	4000K	8163 cd

Delivered lumens will vary depending on CCT and finish

PRODUCT IMAGES AND DIMENSIONS



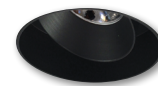
NIO-4RTLA
Round Trimless Adjustable
Adjustability: 35°



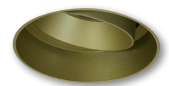
BB
Black Adjustable
Black Reflector



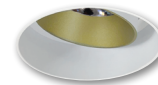
BW
Black Adjustable
White Reflector



BZ
Bronze Adjustable
Bronze Reflector



CH
Champagne Haze Adjustable
Champagne Haze Reflector



CHMPW
Champagne Haze Adjustable
Matte Powder White Reflector



HW
Haze Adjustable
White Reflector



HZ
Haze Adjustable
Haze Reflector



HZMPW
Haze Adjustable
Matte Powder White Reflector



MPW
Matte Powder White Adjustable
Matte Powder White Reflector



WW
White Adjustable
White Reflector

4" Iolite Round Trimless Adjustable with 10° Optic - New Construction Housing & Trimless Mud Ring Required

Color Temperature	Finish
NIO-4RTLA270 = 2700K	BB = Black
NIO-4RTLA300 = 3000K	BW = Black / White
NIO-4RTLA350 = 3500K	BZ = Bronze
NIO-4RTLA400 = 4000K	CH = Champagne Haze
	CHMPW = Champagne Haze / Matte Powder White
	HW = Haze / White
	HZ = Haze
	HZMPW = Haze / Matte Powder White
	MPW = Matte Powder White
	WW = White

Compatible Housings

Housing Type

NHIOICD-48LE4 = ICAT New Construction; Triac / ELV / 0-10V
NHIOICD-48LUPEQ = ICAT New Construction; Lutron EcoSystem
NHIOICDCP-48LE4 = Chicago Plenum; Triac / ELV / 0-10V
NHIOICDCP-48LUPEQ = Chicago Plenum; Lutron EcoSystem

4" Iolite Trimless Mud Ring

Description

NIO-TLMR-4RA = 4" Round Trimless Mud Ring

Example: **NIO-4RTLA40QWW / NIO-TLMR-4RA** = 4" Iolite Round Trimless Adjustable with 10° Optic, 4000K, White finish / Round Trimless Mud Ring

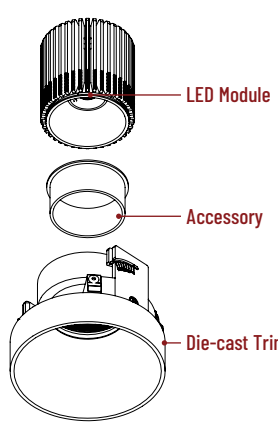
4" Iolite Accessories


4" Iolite Round Trimless Adjustable with 10° Optic

Type
Project
Catalog No.
Notes

ACCESSORIES

Iolite accessories can be added at any point in the design process. Accessories easily install between LED module and die-cast trim. Luminaire will accommodate (1) hex louver and (1) collar accessory, no accessory holder required.






Translucent Decorative Collar

NIO-AS14(color)	5/8" length
NIO-AS19(color)	3/4" length
NIO-AS26(color)	1" length

Color:
AM (amber), BLU (blue), FR (frosted), R (red)

Translucent collars color the aperture with the specified color while producing white general light. Collars are available in different lengths. Use to add interest, create a theme, match a theme or define a space.




Opaque Collar Snoot

NIO-AS14(color)	5/8" length
NIO-AS19(color)	3/4" length
NIO-AS26(color)	1" length

Color:
MPW (matte powder white), WH (white)

Opaque snoot greatly reduces aperture brightness while preserving light output.



Hex Cell Louver

NIO-HC Black

Hex cell louver subtly reduces aperture brightness by reducing light output by about 20%.

TRIMLESS MUD RING

4" Iolite trimless has no exposed trim flange and the result is a minimalist knife edge appearance. A trimless mount mud ring is installed after the drywall and a professional drywall finisher floats the ceiling to blend in the mud ring.



Mud Ring

NIO-TLMR-4RA Round Mud Ring

Mounts trimless reflector with no exposed flange and no extension beyond ceiling plane. Mud ring attaches to drywall. **Only for use with NHIOICD-48, NHIOICDCP-48 new construction housings and NIO-4RTL.**
Dimensions: 7-7/8" diameter 1/2" thick

SUCTION CUP

Assist removing trimless reflector from finished ceiling after installation. For maintenance on downlight, housing and/or driver.



Suction Cup for Removal

NIO-TLSUCTION

PHOTOMETRICS

4" Iolite Round Trimless Adjustable with 10° Optic

Type _____

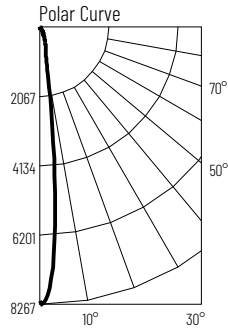
Project _____

Catalog No. _____

Notes _____

Test Information

Test Number: NTR1899R1
 Part Number: NIO-4RTLA40QWW
 Beam Spread: 12° Spot
 Lumens: 884lm
 Wattage: 12.41W
 Efficacy: 71lpw
 CCT / CRI: 4000K / 90 CRI
 Spacing Criteria (0°-180°): 0.22
 Spacing Criteria (90°-270°): 0.22



Illuminance at a Distance

Distance from Luminaire	FC at Nadir	Beam Diameter
6'	227fc	1'-2"
8'	128fc	1'-8"
10'	81.6fc	2'-1"
12'	56.7fc	2'-6"
14'	41.6fc	2'-11"

Zonal Lumen Summary

Zone	Lumens	% Luminaire
0-30	700	79.2
0-40	790	89.4
0-60	870	98.4
0-90	884	100
90-180	0	0
0-180	884	100

Candela Table

Vertical Angles	Candela
0	8163
5	5084
15	689
25	323
35	136
45	64

Lumen Output Multipliers

Color Temperature: 2700K (0.9), 3000K (0.96), 3500K (0.96), 4000K (1.00)