

NQZ2-41TWTW-MPW

4" Quartz LED Downlight with Selectable Lumens & Selectable CCT

Source: 7W to 12W LED

800lm to 1250lm

Type

Project

Catalog No.

Notes

PRODUCT DESCRIPTION

Quartz Series series is an architectural and commercial grade LED high lumen downlight. Each luminaire includes two tunable switches; Selectable Lumens allows the end user to determine the wattage input & Selectable CCT changes the color temperature appearance. Reflectors include two tension steel spring clips, which allow the luminaires to install without any frame-in or housing for an easy installation.

FEATURES

- Can-less installation (No frame-in or housing required)
- Easy installation for retrofit, remodel or new construction applications
- Selectable Lumen switch changes output from 800lm to 1250lm
- Selectable CCT switch changes color temperature from 3000K / 3500K / 4000K
- Field changeable reflector allows for easy customization
- Shatter resistant lens
- 120-277V input and 0-10V dimming
- 5-year limited warranty
- ENERGY STAR certified
- cULus Listed for Wet Locations

SPECIFICATION

Reflector: Aluminum spun reflector with deep set diffused lens for excellent visual comfort while providing high lumen output. Each reflector comes standard with matte powder white finish, optional snap-in reflectors are available and field changeable.

Tunable Switches: Each luminaire includes two switches on the top of the driver enclosure. Selectable Lumen switch changes the lumen output and wattage. Selectable CCT switch changes the color temperature.

Clearance: "IC" Insulated ceiling housings are direct contact rated. Not to be used in direct contact with spray foam insulation.

Mounting: No housing is required, two tensions steel spring clips accommodate ceiling thickness from 1/2" to 1-1/4". New construction frame-in can be ordered separately (NQZ-4R-F).

ELECTRICAL

Input Voltage: 120-277V

Lumens / Wattage: Selectable Lumens: 800lm / 7W, 950lm / 9W and 1250lm / 12W (*Note: Preset to 12W*)

Beam Spread: 83° Wide Flood

Color Temperature: Selectable CCT: 3000K / 3500K / 4000K (*Note: Preset to 3000K*)

Color Rendering Index: 90+CRI

Operating Temperature: 0°C - 40°C

Lifetime: 72,000 hours @ L70

Dimming: Dimmable down to 10% with 0-10V dimmer

[Click Here](#) or check complete dimmer list at www.NoraLighting.com in the "Compatibility" page under "Resources" tab

OPTIONAL ACCESSORIES

NQZ-4R-F: New Construction Frame-In with Collar

NQZ-41REFLC: Specular Clear Snap-in Reflector Insert

NQZ-41REFLD: Clear Diffused Snap-in Reflector Insert

NQZ-41REFLHZ: Haze Snap-in Reflector Insert

NEPK-20LEDUNV: 20W Emergency LED Driver with Remote Test Switch

Emergency: Luminaire is compatible with [NEPK-20LEDUNV](#) (ordered separately). Battery operates luminaire at 20W for 90 minute emergency operation with a fully charged battery.

LABELS AND LISTINGS

- cETLus Listed for Wet Locations
- cETLus classified for retrofit installations
- ENERGY STAR certified
- [5-Year Limited Warranty](#)
- FCC compliant
- Certified to the high efficacy requirements of California Title 24 JA8-2022



Performance Data

CCT	7W	9W	12W
3000K	758lm	939lm	1170lm
3500K	800lm	993lm	1265lm
4000K	763lm	945lm	1160lm

Delivered lumens will vary depending on finish

PRODUCT IMAGES AND DIMENSIONS



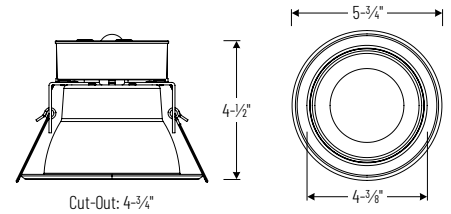
Selectable Lumens

Three position sliding switch
800lm / 950lm / 1250lm



Selectable CCT

Three position sliding switch
3000K / 3500K / 4000K



NQZ2-41TWTW-MPW / NQZ-41REFLC
4" Quartz with Specular Clear Reflector Insert



NQZ2-41TWTW-MPW / NQZ-41REFLD
4" Quartz with Clear Diffused Reflector Insert



NQZ2-41TWTW-MPW / NQZ-41REFLHZ
4" Quartz with Haze Reflector Insert

4" Quartz LED Downlight with Selectable Lumens & Selectable CCT

Reflector Type	Lumens / Wattage / Color Temperature	Reflector / Flange Finish
NQZ2-41 = 4" Quartz	TWTW = 800lm / 950lm / 1250lm 3000K / 3500K / 4000K	-MPW = Matte Powder White

Optional Accessories

Description

NQZ-4R-F = New Construction Frame-In with Collar

NQZ-41REFLC = Specular Clear Snap-in Reflector Insert

NQZ-41REFLD = Clear Diffused Snap-in Reflector Insert

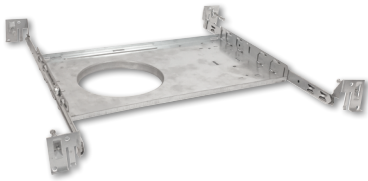
NQZ-41REFLHZ = Haze Snap-in Reflector Insert

NEPK-20LEDUNV = 20W Emergency Battery w/Remote Test Switch

Example: **NQZ2-41TWTW-MPW** = 4" Quartz LED Downlight with Selectable Lumens & Selectable CCT, Matte Powder White

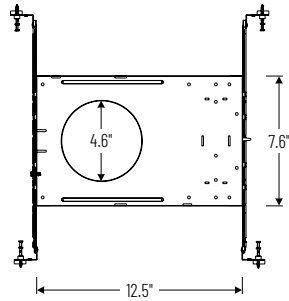
NQZ2-41WTW-MPW
4" Quartz LED Downlight Accessories

Type _____
Project _____
Catalog No. _____
Notes _____



New Construction Frame-In with Collar

NQZ-4R-F
For new construction pre-wiring and easier layout planning.



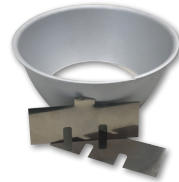
Specular Clear Reflector Insert

NQZ-41REFLC
Snap-in reflector is field changeable and fits over 4" Quartz downlight.



Diffused Clear Reflector Insert

NQZ-41REFLD
Snap-in reflector is field changeable and fits over 4" Quartz downlight.



Haze Reflector Insert

NQZ-41REFLH
Snap-in reflector is field changeable and fits over 4" Quartz downlight.



20W Emergency Battery with Remote Test Switch

NEPK-20LEDUNV
120-277V 20W emergency battery operates luminaire for 90 minute emergency operation with a fully charged battery. Requires 24 hours to for full charge.

PHOTOMETRICS

4" Quartz LED Downlight with Selectable Lumens & Selectable CCT

Type

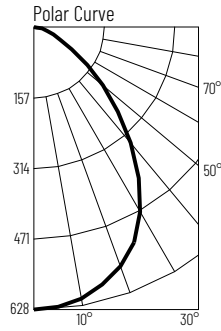
Project

Catalog No.

Notes

Test Information

Test Number: NTR1949R2
 Part Number: NQZ2-41TWTW-MPW
 Beam Spread: 83° Wide Flood
 Lumens: 1170lm
 Wattage: 12.26W
 Efficacy: 95lpw
 CCT / CRI: 3000K / 90 CRI
 Spacing Criteria (0°-180°): 1.16
 Spacing Criteria (90°-270°): 1.14



Illuminance at a Distance

Distance from Luminaire	FC at Nadir	Beam Diameter
4'	39.2fc	7'-1"
6'	17.4fc	10'-8"
8'	9.8fc	14'-2"
10'	6.3fc	17'-10"
12'	4.4fc	21'-5"

Zonal Lumen Summary

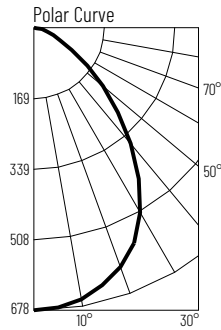
Zone	Lumens	% Luminaire
0-30	467	39.9
0-40	698	59.7
0-60	1058	90.4
0-90	1170	100
90-180	0	0
0-180	1170	100

Candela Table

Vertical Angles	Candela
0	628
5	624
15	594
25	530
35	412
45	265

Test Information

Test Number: NTR1950R2
 Part Number: NQZ2-41TWTW-MPW
 Beam Spread: 83° Wide Flood
 Lumens: 1265lm
 Wattage: 11.75W
 Efficacy: 108lpw
 CCT / CRI: 3500K / 90 CRI
 Spacing Criteria (0°-180°): 1.14
 Spacing Criteria (90°-270°): 1.14



Illuminance at a Distance

Distance from Luminaire	FC at Nadir	Beam Diameter
4'	42.4fc	7'-1"
6'	18.8fc	10'-7"
8'	10.6fc	14'-2"
10'	6.8fc	17'-8"
12'	4.7fc	21'-4"

Zonal Lumen Summary

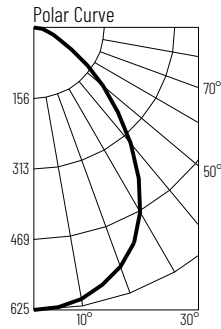
Zone	Lumens	% Luminaire
0-30	502	39.7
0-40	776	61.3
0-60	1142	90.3
0-90	1265	100
90-180	0	0
0-180	1265	100

Candela Table

Vertical Angles	Candela
0	678
5	674
15	640
25	571
35	441
45	286

Test Information

Test Number: NTR1951R2
 Part Number: NQZ2-41TWTW-MPW
 Beam Spread: 83° Wide Flood
 Lumens: 1160lm
 Wattage: 12.16W
 Efficacy: 95lpw
 CCT / CRI: 4000K / 90 CRI
 Spacing Criteria (0°-180°): 1.14
 Spacing Criteria (90°-270°): 1.14



Illuminance at a Distance

Distance from Luminaire	FC at Nadir	Beam Diameter
4'	39.1fc	7'
6'	17.fc	10'-7"
8'	9.8fc	14'-1"
10'	6.3fc	17'-7"
12'	4.3fc	21'-1"

Zonal Lumen Summary

Zone	Lumens	% Luminaire
0-30	463	39.9
0-40	653	56.3
0-60	1049	90.4
0-90	1160	100
90-180	0	0
0-180	1160	100

Candela Table

Vertical Angles	Candela
0	625
5	621
15	590
25	524
35	403
45	263

Lumen Output Multipliers

Wattage: 7W (0.65), 9W (0.8)