

# NQZ2-61TWTW-MPW

6" Quartz LED Downlight with Selectable Lumens & Selectable CCT

Source: 12W to 20W LED  
1350lm to 2200lm

Type

Project

Catalog No.

Notes

## PRODUCT DESCRIPTION

Quartz Series series is an architectural and commercial grade LED high lumen downlight. Each luminaire includes two tunable switches; Selectable Lumens allows the end user to determine the wattage input & Selectable CCT changes the color temperature appearance. Reflectors include two tension steel spring clips, which allow the luminaires to install without any frame-in or housing for an easy installation.

## FEATURES

- Can-less installation (No frame-in or housing required)
- Easy installation for retrofit, remodel or new construction applications
- Selectable Lumen switch changes output from 1350lm to 2200lm
- Selectable CCT switch changes color temperature from 3000K / 3500K / 4000K
- Field changeable reflector allows for easy customization
- Shatter resistant lens
- 120-277V input and 0-10V dimming
- 5-year limited warranty
- ENERGY STAR certified
- cULus Listed for Wet Locations

## SPECIFICATION

**Reflector:** Aluminum spun reflector with deep set diffused lens for excellent visual comfort while providing high lumen output. Each reflector comes standard with matte powder white finish, optional snap-in reflectors are available and field changeable.

**Tunable Switches:** Each luminaire includes two switches on the top of the driver enclosure. Selectable Lumen switch changes the lumen output and wattage. Selectable CCT switch changes the color temperature.

**Clearance:** "IC" Insulated ceiling housings are direct contact rated. Not to be used in direct contact with spray foam insulation.

**Mounting:** No housing is required, two tensions steel spring clips accommodate ceiling thickness from 1/2" to 1-1/2". New construction frame-in can be ordered separately ([NQZ-6R-F](#)).

## ELECTRICAL

**Input Voltage:** 120-277V

**Lumens / Wattage:** Selectable Lumens: 1350lm / 12W, 1850lm / 16W and 2200lm / 20W (*Note: Preset to 20W*)

**Beam Spread:** 94° Wide Flood

**Color Temperature:** Selectable CCT: 3000K / 3500K / 4000K (*Note: Preset to 3000K*)

**Color Rendering Index:** 90+CRI

**Operating Temperature:** 0°C - 40°C

**Lifetime:** 72,000 hours @ L70

**Dimming:** Dimmable down to 10% with 0-10V dimmer

[Click Here](#) or check complete dimmer list at [www.NoraLighting.com](http://www.NoraLighting.com) in the "Compatibility" page under "Resources" tab

## OPTIONAL ACCESSORIES

[NQZ-6R-F](#): New Construction Frame-In with Collar

[NQZ-61REFLC](#): Specular Clear Snap-in Reflector Insert

[NQZ-61REFLD](#): Clear Diffused Snap-in Reflector Insert

[NQZ-61REFLHZ](#): Haze Snap-in Reflector Insert

[NEPK-20LEDUNV](#): 20W Emergency LED Driver with Remote Test Switch

**Emergency:** Luminaire is compatible with [NEPK-20LEDUNV](#) (ordered separately). Battery operates luminaire at 20W for 90 minute emergency operation with a fully charged battery.

## LABELS AND LISTINGS

- cETLus Listed for Wet Locations
- cETLus classified for retrofit installations
- ENERGY STAR certified
- [5-Year Limited Warranty](#)
- FCC compliant
- Certified to the high efficacy requirements of California Title 24 JA8-2022



## Performance Data

CCT	12W	16W	20W
<b>3000K</b>	1354lm	1756lm	2079lm
<b>3500K</b>	1378lm	1894lm	2238lm
<b>4000K</b>	1333lm	1743lm	2045lm

*Delivered lumens will vary depending on finish*

## PRODUCT IMAGES AND DIMENSIONS



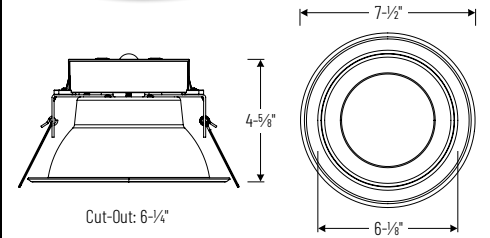
**Selectable Lumens**

Three position sliding switch  
1350lm / 1850lm / 2200lm



**Selectable CCT**

Three position sliding switch  
3000K / 3500K / 4000K



**NQZ2-61TWTW-MPW / NQZ-61REFLC**  
6" Quartz with Specuar Clear Reflector Insert



**NQZ2-61TWTW-MPW / NQZ-61REFLD**  
6" Quartz with Clear Diffused Reflector Insert



**NQZ2-61TWTW-MPW / NQZ-61REFLHZ**  
6" Quartz with Haze Reflector Insert

## 6" Quartz LED Downlight with Selectable Lumens & Selectable CCT

Aperture	Lumens / Wattage / Color Temperature	Reflector / Flange Finish
<b>NQZ2-61</b> = 6" Quartz	<b>TWTW</b> = 1350lm / 1850lm / 2200lm 3000K / 3500K / 4000K	<b>-MPW</b> = Matte Powder White

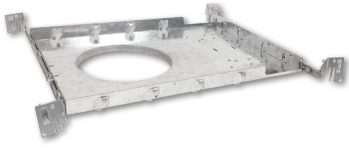
## Optional Accessories

Description
<b>NQZ-6R-F</b> = New Construction Frame-In with Collar
<b>NQZ-61REFLC</b> = Specular Clear Snap-in Reflector Insert
<b>NQZ-61REFLD</b> = Clear Diffused Snap-in Reflector Insert
<b>NQZ-61REFLHZ</b> = Haze Snap-in Reflector Insert
<b>NEPK-20LEDUNV</b> = 20W Emergency Battery w/Remote Test Switch

Example: **NQZ2-61TWTW-MPW** = 6" Quartz LED Downlight with Selectable Lumens & Selectable CCT, Matte Powder White

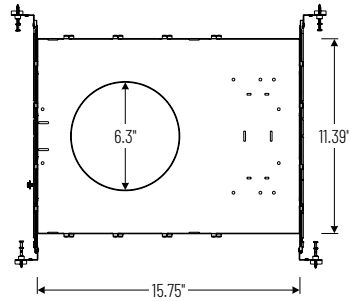
**NQZ2-61WTW-MPW**  
 6" Quartz LED Downlight Accessories

Type \_\_\_\_\_  
 Project \_\_\_\_\_  
 Catalog No. \_\_\_\_\_  
 Notes \_\_\_\_\_



New Construction Frame-In with Collar

**NQZ-6R-F**  
 For new construction pre-wiring and easier layout planning.



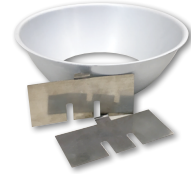
Specular Clear Reflector Insert

**NQZ-61REFLC**  
 Snap-in reflector is field changeable and fits over 6" Quartz downlight.



Diffused Clear Reflector Insert

**NQZ-61REFLD**  
 Snap-in reflector is field changeable and fits over 6" Quartz downlight.



Haze Reflector Insert

**NQZ-61REFLHZ**  
 Snap-in reflector is field changeable and fits over 6" Quartz downlight.



20W Emergency Battery with Remote Test Switch

**NEPK-20LEDUNV**  
 120-277V 20W emergency battery operates luminaire for 90 minute emergency operation with a fully charged battery. Requires 24 hours to for full charge.

# PHOTOMETRICS

## 6" Quartz LED Downlight with Selectable Lumens & Selectable CCT

Type

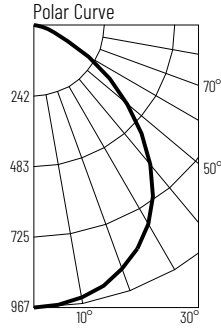
Project

Catalog No.

Notes

### Test Information

Test Number: NTR1958R2  
 Part Number: NQZ2-61TWTW-MPW  
 Beam Spread: 94° Wide Flood  
 Lumens: 2079lm  
 Wattage: 20.07W  
 Efficacy: 104lpw  
 CCT / CRI: 3000K / 90 CRI  
 Spacing Criteria (0°-180°): 1.22  
 Spacing Criteria (90°-270°): 1.2



### Illuminance at a Distance

Distance from Luminaire	FC at Nadir	Beam Diameter
6'	26.9fc	12'-11"
8'	15.1fc	17'-4"
10'	9.7fc	21'-7"
12'	6.7fc	25'-11"
14'	4.9fc	30'-2"

### Zonal Lumen Summary

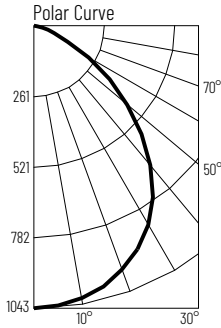
Zone	Lumens	% Luminaire
0-30	737	35.4
0-40	1180	56.8
0-60	1870	90
0-90	2079	100
90-180	0	0
0-180	2079	100

### Candela Table

Vertical Angles	Candela
0	967
5	962
15	924
25	845
35	716
45	528

### Test Information

Test Number: NTR1959R2  
 Part Number: NQZ2-61TWTW-MPW  
 Beam Spread: 94° Wide Flood  
 Lumens: 2238lm  
 Wattage: 19.13W  
 Efficacy: 117lpw  
 CCT / CRI: 3500K / 90 CRI  
 Spacing Criteria (0°-180°): 1.22  
 Spacing Criteria (90°-270°): 1.2



### Illuminance at a Distance

Distance from Luminaire	FC at Nadir	Beam Diameter
6'	29fc	12'-11"
8'	16.3fc	17'-2"
10'	10.4fc	21'-6"
12'	7.2fc	25'-10"
14'	5.3fc	30'-1"

### Zonal Lumen Summary

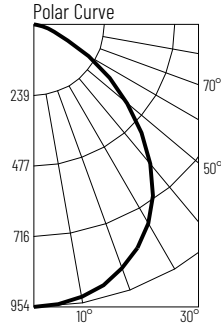
Zone	Lumens	% Luminaire
0-30	794	35.5
0-40	1272	56.8
0-60	2013	90
0-90	2238	100
90-180	0	0
0-180	2238	100

### Candela Table

Vertical Angles	Candela
0	1043
5	1038
15	995
25	911
35	772
45	567

### Test Information

Test Number: NTR1960R2  
 Part Number: NQZ2-61TWTW-MPW  
 Beam Spread: 94° Wide Flood  
 Lumens: 2045lm  
 Wattage: 19.89W  
 Efficacy: 103lpw  
 CCT / CRI: 4000K / 90 CRI  
 Spacing Criteria (0°-180°): 1.22  
 Spacing Criteria (90°-270°): 1.2



### Illuminance at a Distance

Distance from Luminaire	FC at Nadir	Beam Diameter
6'	26.5fc	12'-10"
8'	14.9fc	17'-1"
10'	9.5fc	21'-5"
12'	6.6fc	25'-8"
14'	4.9fc	29'-11"

### Zonal Lumen Summary

Zone	Lumens	% Luminaire
0-30	726	35.5
0-40	1162	56.8
0-60	1838	89.9
0-90	2045	100
90-180	0	0
0-180	2045	100

### Candela Table

Vertical Angles	Candela
0	954
5	949
15	911
25	833
35	705
45	516

### Lumen Output Multipliers

Wattage: 12W (0.64), 16W (0.85)