

# NIOC-2RNB

2" Iolite Can-less Round Bullnose

Source: 12W LED  
1275lm

Type

Project

Catalog No.

Notes

## PRODUCT DESCRIPTION

2" Iolite can-less downlights can be installed in new construction or remodel applications. Deep regressed cone reflectors optimize visual cut-off.

## FEATURES

- No housing required - IC Air-Tight rated
- Easy installation for remodel or new construction applications
- Variety of trim accessories to configure desired appearance
- Quick disconnect allows for extended lengths
- Dedicated CCT or Comfort Dim (warm dim)
- Flood optic, narrow flood and spot optics (included)
- 5-Year limited warranty
- cULus Listed for Wet Locations

## SPECIFICATION

**Construction:** Trims are constructed of heat dissipating, die-cast aluminum. Aluminum die-cast LED module is threaded to fit the trim and transfer heat.

**Air Flow Restriction:** Luminaire has factory installed gasket to restrict airflow from room into ceiling plenum to <2CFM (cubic feet per minute) in accordance with ASTM-283 Air-Tight requirements.

**Clearance:** IC rated luminaires are rated for direct contact with insulation (not spray foam insulation), no minimum clearance is required.

**Driver Box:** Prewired junction box includes 7" quick connect wire to LED module for ease of installation. Junction box includes two ½" trade size knockouts and snap on cover.

*Maximum length between luminaire and driver is 40'. For longer remote driver remote run length, consult factory.*

**Mounting:** No housing is required, two tensions steel spring clips secure luminaire to ceiling. Accommodates ceiling thickness up to ¾". New construction frame-in kit is available, see accessories.

## OPTICS

Each module includes field changeable optics (spot, narrow flood and flood - preinstalled).

## ELECTRICAL

**Input Voltage:** 120VAC

**Lumens / Wattage:** 1275lm / 12W

**Color Temperature:** 2700K, 3000K, 3500K or 4000K

**Color Rendering Index:** 90+CRI

**Operating Temperature:** 0°-30°C

**Lifetime:** 50,000 hours @ L70

**Comfort Dim:** Comfort Dim color tunes the temperature from a bright 3100K, to a romantic and comfortable 2000K on a gradual, even curve. Available in 950lm only.

**Dimming:** Triac or ELV

**Accessories:** Luminaire will accommodate (1) hex louver and (1) translucent deco collar or opaque snoot, no accessory holder is required, see accessories page.

## LABELS AND LISTINGS

- cULus Listed for Wet Locations
- [5-Year Limited Warranty](#)
- RoHS Compliant
- Certified to the high efficacy requirements of California Title 24 JA8-2022

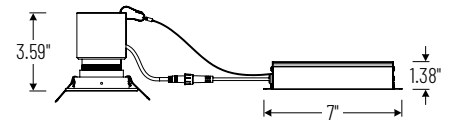


## Performance Data

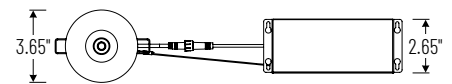
Part Numbers	Lumens	CCT	Optic
<b>NIOC-2RNBMPW</b> <b>NIOC-24LED940X</b> <b>NJCB-12</b>	1283lm	4000K	Spot
	1287lm	4000K	Narrow
	1275lm	4000K	Flood

*Delivered lumens will vary depending on CCT, optic and finish*

## PRODUCT IMAGES & DIMENSIONS



Cut out: 3-1/8"



## 2" Iolite Can-less Round Bullnose Trim



**MPW**  
Matte Powder White



**WW**  
White Reflector

Item Number

**NIOC-2RNBMPW** = Matte Powder White Trim  
**NIOC-2RNBWW** = White Trim

## 2" & 4" Iolite Can-less LED Module



Color Temperature

**NIOC-24LED927X** = 2700K  
**NIOC-24LED930X** = 3000K  
**NIOC-24LED935X** = 3500K  
**NIOC-24LED940X** = 4000K  
**NIOC-24LED9CDX** = Comfort Dim (3100K-2000K)

## Driver Box



Wattage

**NJCB-12** = 12W / 120VAC input / Triac or ELV dimming

Example: **NIOC-2RNBMPW / NIOC-24LED930X / NJCB-12** = 2" Iolite Can-less Bullnose Trim, Matte Powder White finish, 3000K LED Module, 12W Driver Box with 120VAC input; Triac or ELV dimming

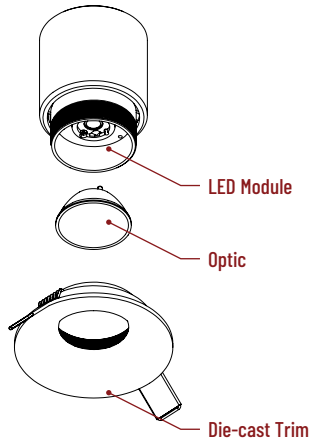
# Iolite Can-less Accessories

## 2" Iolite Can-less Round Bullnose

Type	
Project	
Catalog No.	
Notes	

### FIELD CHANGEABLE OPTICS

Iolite luminaires include spot, narrow flood and flood optics. Optics can be changed in the field by removing LED module from die-cast trim. Optional frosted and TIR optics are also available.



Frosted Optics

**NIO-REFL38FR**  
**NIO-REFL60FR**

60° Optic  
73° Optic



Premium TIR Optics

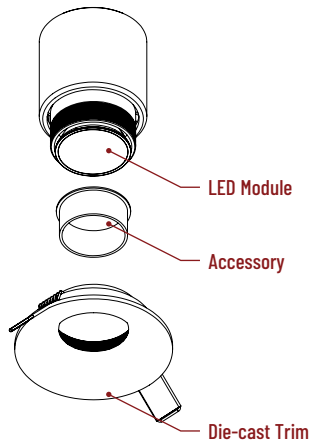
**NIO-REFLTIR15**  
**NIO-REFLTIR25**

22° Optic  
26° Optic

TIR optics are not compatible with hex cell louver accessory.

### TRIM ACCESSORIES

Iolite accessories can be added at any point in the design process. Accessories easily install between LED module and die-cast trim. Luminaire will accommodate (1) hex louver and (1) collar accessory, no accessory holder required.



Translucent Decorative Collar

**NIO-AS14(color)** 5/8" length  
**NIO-AS19(color)** 3/4" length  
**NIO-AS26(color)** 1" length  
**Color:**  
AM (amber), BLU (blue), FR (frosted), R (red)

Translucent collars color the aperture with the specified color while producing white general light. Collars are available in different lengths. Use to add interest, create a theme, match a theme or define a space.



Opaque Collar Snoot

**NIO-AS14(color)** 5/8" length  
**NIO-AS19(color)** 3/4" length  
**NIO-AS26(color)** 1" length  
**Color:**  
MPW (matte powder white), WH (white)

Opaque snoot greatly reduces aperture brightness while preserving light output.



Hex Cell Louver

**NIO-HC** Black  
Hex cell louver subtly reduces aperture brightness by reducing light output by about 20%.

Hex cell louver is not compatible with TIR optics.

### MOUNTING ACCESSORIES

Iolite canless luminaires are ready to be installed out of the box. Additional mounting accessories can be used to assist during installation or extend length between driver box and luminaire.

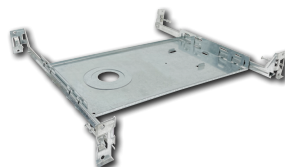


Quick Connect Extension Cables

**NCA-EW-4**  
**NCA-EW-10**

4' Cable  
10' Cable

Use to extend the length between luminaire and driver box. Can be connected together to create custom lengths. Maximum length between luminaire and driver is 40'. For longer remote driver remote run length, consult factory.



New Construction Frame-In

**NF-R124**

Universal new construction frame-in can be used to assist installing can-less recessed downlighting.



New Construction Frame-In with Collar

**NFC-R313**

New construction frame-in can be used to assist installing can-less recessed downlighting.

# PHOTOMETRICS

## 2" Iolite Can-less Round Bullnose

Type

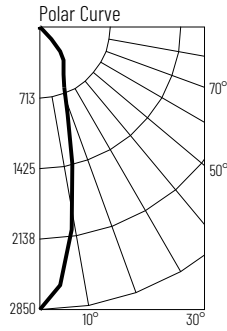
Project

Catalog No.

Notes

### Test Information

Test Number: NTR2039R1  
 Part Number: NIOC-2RNB40XMPW  
 Beam Spread: 27° Spot  
 Lumens: 1283lm  
 Wattage: 11.77W  
 Efficacy: 109lpw  
 CCT / CRI: 4000K / 90 CRI  
 Spacing Criteria (0°-180°): 0.46  
 Spacing Criteria (90°-270°): 0.46



### Illuminance at a Distance

Distance from Luminaire	FC at Nadir	Beam Diameter
4'	178fc	1'-11"
6'	79.2fc	2'-11"
8'	44.5fc	3'-11"
10'	28.5fc	4'-10"
12'	19.8fc	5'-10"

### Zonal Lumen Summary

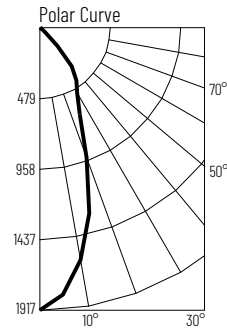
Zone	Lumens	% Luminaire
0-30	769	60.0
0-40	1010	78.7
0-60	1270	99.0
0-90	1283	100
90-180	0	0
0-180	1283	100

### Candela Table

Vertical Angles	Candela
0	2850
5	2554
15	1255
25	587
35	427
45	167

### Test Information

Test Number: NTR2040R1  
 Part Number: NIOC-2RNB40XMPW  
 Beam Spread: 40° Narrow Flood  
 Lumens: 1287lm  
 Wattage: 11.76W  
 Efficacy: 109lpw  
 CCT / CRI: 4000K / 90 CRI  
 Spacing Criteria (0°-180°): 0.64  
 Spacing Criteria (90°-270°): 0.64



### Illuminance at a Distance

Distance from Luminaire	FC at Nadir	Beam Diameter
4'	120fc	2'-11"
6'	53.2fc	4'-4"
8'	29.9fc	5'-8"
10'	19.2fc	7'-2"
12'	13.3fc	8'-7"

### Zonal Lumen Summary

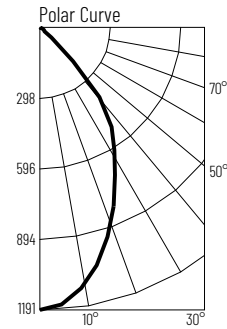
Zone	Lumens	% Luminaire
0-30	837	65.0
0-40	1104	85.8
0-60	1271	98.8
0-90	1287	100
90-180	0	0
0-180	1287	100

### Candela Table

Vertical Angles	Candela
0	1917
5	1818
15	1303
25	648
35	435
45	174

### Test Information

Test Number: NTR2041R1  
 Part Number: NIOC-2RNB40XMPW  
 Beam Spread: 64° Flood  
 Lumens: 1275lm  
 Wattage: 11.75W  
 Efficacy: 108lpw  
 CCT / CRI: 4000K / 90 CRI  
 Spacing Criteria (0°-180°): 0.90  
 Spacing Criteria (90°-270°): 0.90



### Illuminance at a Distance

Distance from Luminaire	FC at Nadir	Beam Diameter
4'	74.5fc	5'-0"
6'	33.1fc	7'-6"
8'	18.6fc	10'-0"
10'	11.9fc	12'-6"
12'	8.27fc	15'-0"

### Zonal Lumen Summary

Zone	Lumens	% Luminaire
0-30	627	49.2
0-40	937	73.5
0-60	1251	98.2
0-90	1275	100
90-180	0	0
0-180	1275	100

### Candela Table

Vertical Angles	Candela
0	1191
5	1164
15	997
25	752
35	538
45	201

### Lumen Output Multipliers

Color Temperature: 2700K (0.83), 3000K (0.92), 3500K (0.93), 4000K (1.00)