

FLIN ADJUSTABLE

Adjustable Can-less Downlights 25° Tilt & 180° Rotation (No Housing Required!)

FLIN adjustable can-less LED downlights feature two-axis rotation with **25° tilt and 180° rotation**. 4" and 6" Can-less downlights are easy to install in new construction or remodel applications. Junction box includes a **five CCT switch** to change the color temperature from 2700K to 5000K.

FEATURES

- Two sizes and outputs (900lm or 1100lm)
- 25° Tilt & 180° Rotation
- No housing required and includes pre-wired junction box
- Quick disconnect allows for easy installation
- Junction box includes selectable color temperature switch
- IC Airtight rated
- Five color temperatures in each fixture (2700K, 3000K, 3500K, 4000K or 5000K)
- 120V input with Triac or ELV dimming
- cETLus Listed for Wet locations
- Certified to the high efficacy requirements of California Title 24 JA8-2025



FLIN ADJUSTABLE CAN-LESS LED DOWNLIGHTS

DESCRIPTION

NFLINA-R4TWMPW	4" FLIN Adjustable, 800lm / 10W, Selectable CCT
NFLINA-R6TWMPW	6" FLIN Adjustable, 1100lm / 13.5W, Selectable CCT

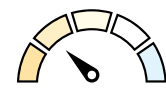
OPTIONAL ACCESSORIES

DESCRIPTION

NFC-R430	New Construction Frame-In for NFLINA-R4TWMPW
NF-R246	New Construction Frame-In for NFLINA-R6TWMPW

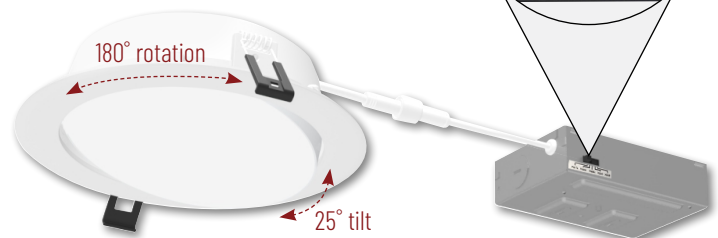
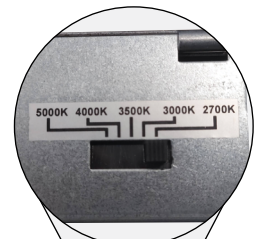


NFLINA-R4TWMPW
4" FLIN Adjustable
900lm



Selectable CCT

Five position switch
27K / 30K / 35K / 40K / 50K



NFLINA-R6TWMPW
6" FLIN Adjustable
1100lm

