

MULTIPLE LIGHTING SYSTEM

One to Three Heads

Delivering 3500 lumens per head

Endless possibilities with lolite multiple's functionality and architectural aesthetics. lolite multiple recessed family consist of one to three independently adjustable heads, flanged or trimless, variety of beam distributions and multiple reflector options. lolite multiple series is a perfect solution for most retail, hospitality and commercial applications.

FEATURES

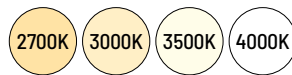
- One to Three Head Configurations
- 120V phase dimming or 120-277V 0-10V dimming
- 950lm to 3500lm LED packages
- 2700K, 3000K, 3500K or 4000K @ 90+ CRI
- Field changeable optics included (Spot, Narrow Flood and Flood - installed)
- IC and Non-IC rated housings
- Individual drivers for each LED module
- Gimbal heads tilt 40° and rotate 350°
- Regressed or Flat Trim with Flange
- 5-year limited warranty
- ENERGY STAR certified



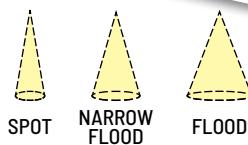
Universal Brackets
Accept C-Channel
or Bar Hangers

Non-IC & IC Options
IC (900lm & 1500lm)
Non-IC (2500lm to 3500lm)

Addressable
Dedicated driver
per head



Die-Cast Aluminum Heat Sink
with Signify® COB technology



Specified Beam Spreads
Each module includes spot,
narrow flood and flood optics

Regressed or Flat Trim
Available in one to three heads
Black, Silver or White Finish

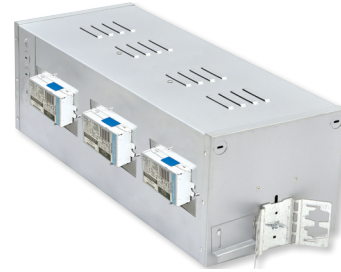
MULTIPLE LIGHTING SYSTEM ORDERING MATRICES



NMRG3-1
Non-IC / One-Head

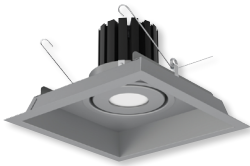


NMRGIC3-2
IC / Two-Head

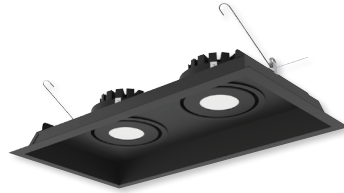


NMRGIC3-3
IC / Three-Head

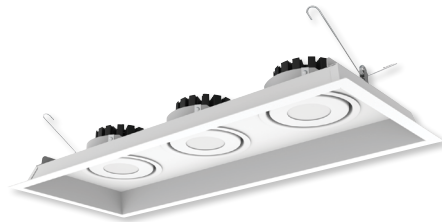
MULTIPLE LIGHTING HOUSING		
INSTALLATION TYPE / NUMBER OF HEADS	LUMENS / WATTS PER HEAD	INPUT VOLTAGE / DIMMING
NMRGIC3-1 = IC / One Head NMRGIC3-2 = IC / Two Heads NMRGIC3-3 = IC / Three Heads	L1 = 900lm / 11W L2 = 1500lm / 16W	P01 = 120V; Phase Dimming (Triac / ELV) C12 = 120-277V; 0-10V Dimming
NMRG3-1 = Non-IC / One Head NMRG3-2 = Non-IC / Two Heads NMRG3-3 = Non-IC / Three Heads	L3 = 2500lm / 26W L4 = 3000lm / 32W L5 = 3500lm / 38W	P01 = 120V; Phase Dimming (Triac / ELV) C12 = 120-277V; 0-10V Dimming
Example: NMRG3-3L5C12 = Three Head Non-IC Housing, 3500lm / 38W per head, 120-277V input		



NMRT3-1R
One Head / Regressed Face
Silver Face / Silver Flange



NMRT3-2R
Two Head / Regressed Face
Black Face / Black Flange



NMRT3-3R
Three Head / Regressed Face
White Face / White Flange

FLANGED HIGH LUMEN LED GIMBAL MULTIPLE LIGHTING TRIM					
NUMBER OF HEADS	TRIM TYPE	LUMENS / WATTS PER HEAD	CCT	BEAM SPREAD	FACE / FLANGE FINISH
NMRT3-1 = One Head NMRT3-2 = Two Heads NMRT3-3 = Three Heads	F = Flat Face ¹ R = Regressed Face ¹ Available in WW only	L1 = 900lm / 11W L2 = 1500lm / 16W L3 = 2500lm / 26W L4 = 3000lm / 32W L5 = 3500lm / 38W	27 = 2700K 30 = 3000K 35 = 3500K 40 = 4000K	S = Spot N = Narrow F = Flood	BB = Black / Black ² BW = Black / White SS = Silver / Silver WW = White / White ² Two or three head only
Example: NMRT3-3RL535SBW = Three Head Regressed Face Multiple Trim, 3500lm / 38W per head, 3500K, Black / White					