

MARQUISE III

Commercial & Residential Specification Grade Downlights 4", 5" & 6" apertures / Up to 2500lm

Marquise III high lumen LED downlights are available in 4", 5" and 6" trim options. The Marquise III utilizes Signify® COB LED technology for better optic control with three specified beam spreads. Beam spreads focus the light down to the work plane from high ceiling applications. Marquise III luminaires are available in new construction, remodel, sloped and retrofit configurations.

FEATURES

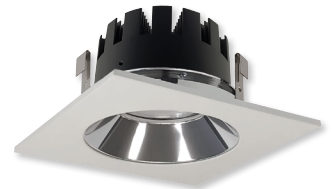
- 900lm to 2500lm LED packages
- 4", 5" or 6" trim types
- 2700K, 3000K, 3500K or 4000K @ 90+ CRI
- 120V, 277V or 120-277V input
- Triac, ELV or 0-10V dimming
- Signify® COB with spot, narrow flood or flood beam spreads
- New Construction or Remodel Housings
- Sloped and Retrofit also available
- 5-year limited warranty
- cULus Listed for Wet Locations



NRM3-62
6" Baffle



NRM3-57
5" Adjustable Regressed Baffle



NRM3-43
4" Square Reflector



NMRC3-61
6" Retrofit Reflector



MARQUISE III ORDERING MATRICES



NHMIC3-6

6" ICAT New Construction



NHRMIC3-4

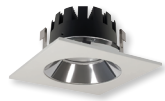
4" ICAT Remodel

4", 5" & 6" MARQUISE III HOUSINGS

HOUSING TYPE	APERTURE	LUMENS / WATTAGE	INPUT / DIMMING	OPTIONAL EMERGENCY
NHMICD3 IC Double Wall New Construction ¹	-4 4"	L1 900lm / 11W	P01 120V input; Triac/ELV C12 120-277V input; 0-10V	/EM Emergency w/ Remote Test Switch ²
NHMIC3 IC New Construction	-5 5"	L2 1500lm / 16W		
NHM3 Non-IC New Construction	-6 6"	L3 2000lm / 22W		
NHRMIC3 IC Remodel		L4 2500lm / 26W		
NHRM3 Non-IC Remodel				

¹ Available up to 4" & 6" only • ² Available with new construction only

Example: **NHM3-6L4C12** = 4" Marquise III Non-IC Air-Tight New Construction Housing, 2500lm / 26W, 120-277V input; 0-10V dimming



NRM3-43

4" Square Reflector



NRM3-54

5" Surface Adjustable



NRM3-57

5" Adjustable Regressed Baffle



NRM3-41

4" Reflector

4", 5" & 6" MARQUISE III TRIMS

APERTURE	TRIM TYPE	LUMENS / WATTAGE	CCT	BEAM SPREAD	FINISH ⁴
NRM3-4 4"	1 Reflector	L1 900lm / 11W	27 2700K	S Spot	BB Black / Black
NRM3-5 5"	2 Baffle	L2 1500lm / 16W	30 3000K	N Narrow Flood	BW Black / White
NRM3-6 6"	3 Square Reflector ¹	L3 2000lm / 22W	35 3500K	F Flood	BZ Bronze / Bronze
	4 Surface Adjustable ²	L4 2500lm / 26W	40 4000K		CO Copper / Copper
	7 Adjustable Regressed Baffle ²				DB Diffused / Black
	8 Deco Glass ^{2,3}				DD Diffused / Diffused
	9 Adjustable Regressed Reflector ²				HZ Haze / Haze
					HZW Haze / White
					MPW Matte Powder White
					NN Natural Metal
					WW White / White

¹ Available in 4" only • ² Available in 5" & 6" only • ³ Specify glass separately for deco. glass, see below • ⁴ Not all finishes available on all trims

Example: **NRM3-6L435MPW** = 6" Marquise III Reflector, 2500lm / 26W, 3500K, Spot Beam Spread, Matte Powder White Reflector & Flange

4", 5" & 6" MARQUISE III RETROFIT

TRIM TYPE	LUMENS / WATTAGE	CCT	BEAM SPREAD	FINISH
NRM3-41 4" Reflector	L1 1300lm / 12W	27 2700K	S Spot	BB Black / Black
NRM3-42 4" Baffle		30 3000K	N Narrow Flood	BW Black / White
NRM3-51 5" Reflector		35 3500K	F Flood	BZ Bronze / Bronze
NRM3-52 5" Baffle		40 4000K		CO Copper / Copper
NRM3-61 6" Reflector				DB Diffused / Black
NRM3-62 6" Baffle				DD Diffused / Diffused
				HZ Haze / Haze
				HZW Haze / White
				MPW Matte Powder White
				NN Natural Metal
				WW White / White

Example: **NRM3-62L135SBZ** = 5" Marquise III Retrofit Baffle, 1300lm / 12W, 3500K, Spot Beam Spread, Bronze Baffle & Bronze Flange

6" MARQUISE III SLOPED HOUSINGS & TRIMS

HOUSING TYPE	LUMENS / WATTAGE	INPUT / DIMMING	OPTIONAL EMERGENCY
NHMIC3-926 IC New Construction	L1 900lm / 11W	P01 120V input; Triac/ELV C12 120-277V input; 0-10V	/EM Emergency with Remote Test Switch ¹
NHRMIC3-926 IC Remodel	L2 1200lm / 16W		

6" MARQUISE III SLOPED TRIMS

TRIM TYPE	LUMENS / WATTAGE	CCT	BEAM SPREAD	FINISH
NRM3-6S1 Sloped Reflector	L1 900lm / 11W L2 1200lm / 16W	27 2700K	S Spot	B Black / White
NRM3-6S2 Sloped Baffle		30 3000K	N Narrow Flood	W White / White
		35 3500K	F Flood	
		40 4000K		



NHMIC3-926

6" Sloped Housing



NRM3-6S1

6" Sloped Reflector