

Installation Instructions

NC3-8

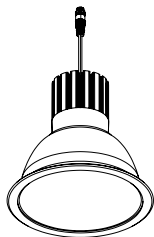
8" Sapphire III High Lumen Reflectors

READ PRIOR TO ATTEMPTING INSTALLATION
ALWAYS TURN OFF MAIN POWER BEFORE INSTALLATION
INSTALLATION SHOULD BE CARRIED OUT BY YOUR LOCAL ELECTRICIAN

- ⚠ WARNING** - Risk of fire or electric shock. LED installation kit requires knowledge of luminaires electrical systems. If not qualified, do not attempt installation. Contact a qualified electrician.
- ⚠ WARNING** - Risk of fire or electric shock. Install this kit only in luminaires that have the construction features and dimensions shown in the photographs and / or drawings and where the input rating does not exceed the input rating of the luminaire.
- ⚠ WARNING** - To prevent wiring damage or abrasion, do not expose wiring to edges of sheet metal or other sharp objects.
- ⚠ WARNING** - This equipment is intended to be installed only by qualified personnel. The installation must be made in accordance with the current edition to the National Electric Code and all applicable state and local building codes. The final installation must be approved by the appropriate qualified electrical/building inspector(s). Improper installation may result in a fire or electrical hazard. Be sure the electrical power to the circuit has been disconnected before installing this electrical system.

- ⚠ AVERTISSEMENT** - Cet équipement est destiné à être installé uniquement par du personnel qualifié. L'installation doit être faite en conformité avec l'édition actuelle du Code national de l'électricité et toutes étatiques et locales codes du bâtiment applicables. L'installation finale doit être approuvée par l'inspecteur en électricité / bâtiment qualifié approprié(s). Une mauvaise installation peut entraîner un incendie ou un risque électrique. Soyez sûr de la puissance électrique vers le circuit a été coupée avant l'installation de ce système électrique.

PACKAGING CONTENTS



Sapphire III Reflector

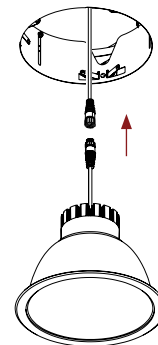


(3) Reflector Clips

INSTALLATION INSTRUCTIONS

1. Connect female CL2 connector to male CL2 connector of the fixture to frame-in.
2. Secure aircraft cable on the heatsink to the housing.
3. Push the reflector into the plaster frame opening until the reflector is flush with the ceiling.

⚠ IMPORTANT: Connector is not intended to support weight of the fixture. Please support fixture at all times.

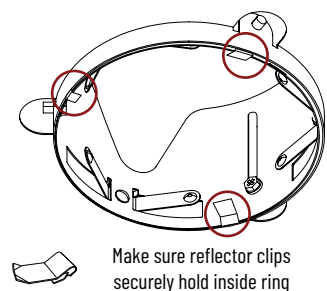
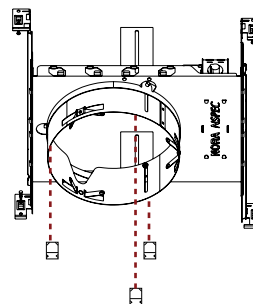


INSTALL REFLECTOR CLIPS

1. Install the reflector clips (see chart) onto the edge of the ceiling collar with the clips pointing toward the center of the opening.
2. The clips should be spaced 120° apart.

Finish	Clips
NC3-8BB	3
NC3-8BMPW	
NC3-8MPW	

Finish	Clips
NC3-8CC	2
NC3-8DD	
NC3-8DMPW	
NC3-8HZ	
NC3-8HZMPW	



Make sure reflector clips securely hold inside ring