

NCHR3-6

6" Sapphire III Remodel Frame-In

Source: 13W to 60W

900lm to 5500lm

Type

Project

Catalog No.

Notes

PRODUCT DESCRIPTION

Architectural quality 0.050" galvanized steel ring riveted to 0.064" steel junction box and driver tray. Remodel frame opening includes (3) "butterfly" spring clips to hold reflector assembly in place.

Mounting: Designed for installation in existing ceilings. Three high tension tempered steel springs secure remodel housings evenly to the ceiling; hole cutout template provided for convenience. Remodel frame-in accommodates ceiling thickness from 1/2" to 1-1/4".

Minimum Clearances: Frames require a minimum of 3" from thermal insulation and 1/2" from adjacent building component.

Junction Box: Plaster frame integrated 29 cubic inch 0.064" thick galvanized steel, with seven 1/2" knockouts, four pryouts, and snap on cover. Electrical connections are made through a single junction box door. Green wire provided for installations with ground wire fed through PVC pipe conduit. Junction box connects to reflector assembly with lockable quick connect.

Thermal Protector: Phase dimming drivers require an external thermal device, which is located on the junction box; Other drivers are thermally protected.

Driver: Isolated driver separates the primary side from the secondary side.

ELECTRICAL	L1	L2	L3	L4	L5	L6
Input Voltage	120VAC or 120-277VAC		120VAC or 277VAC			
Input Power	13W max.	18W max.	26W max.	38W max.	46W max.	60W max.
Power Factor	≥0.90					
Dimming	Triac/ELV or 0-10V					
Operating Temperature	0°C to 40°C	0°C to 40°C	0°C to 35°C	0°C to 35°C	0°C to 25°C	0°C to 25°C
Compatible Reflectors	NC3-61L1 NC3-66L1 NC3-68L1	NC3-61L2 NC3-66L2 NC3-68L2	NC3-61L3 NC3-66L3 NC3-68L3	NC3-61L4 NC3-66L4 NC3-68L4	NC3-61L5 NC3-66L5 NC3-68L5	NC3-61L6

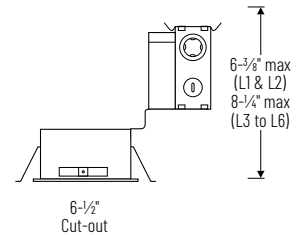
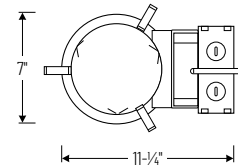
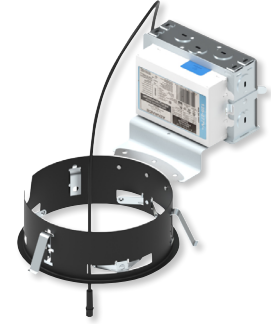
Emergency: Remodel frame-in can be wired with remote emergency driver and test switch ([NEPK-20LEDUNV](#)), requires ceiling access.

LABELS AND LISTINGS

- cULus Listed for Damp Locations (Wet Locations when used with compatible reflector)
- [5-Year Limited Warranty](#)
- RoHS Compliant
- FCC Compliant
- Emergency LED Driver meets Title 20 CEC efficiency standards



PRODUCT IMAGES AND DIMENSIONS



6" Sapphire III Remodel Frame-In - Compatible with Sapphire III Reflectors

Lumens / Wattage	Input Voltage / Dimming
NCHR3-6L1 = 900lm / 13W	P01 = 120V; Phase Dimming (Triac/ELV)
NCHR3-6L2 = 1500lm / 18W	C12 = 120-277V; 0-10V Dimming
NCHR3-6L3 = 2500lm / 26W	P01 = 120V; Phase Dimming (Triac/ELV)
NCHR3-6L4 = 3500lm / 38W	C01 = 120V; 0-10V Dimming
NCHR3-6L5 = 4500lm / 46W	C02 = 277V; 0-10V Dimming
NCHR3-6L6 = 5500lm / 60W	

Example: **NCHR3-6L6C02** = 6" Sapphire III Remodel Frame-In, 5500lm / 60W, 277V input; 0-10V dimming

Optional Accessories

Description

NEPK-20LEDUNV = Remote Emergency Battery w/Test Switch