

# NCHR3-8

8" Sapphire III Remodel Frame-In

Source: 13W to 60W

900lm to 5500lm

Type

Project

Catalog No.

Notes

## PRODUCT DESCRIPTION

Architectural quality 0.050" galvanized steel ring riveted to 0.064" steel junction box and driver tray. Remodel frame opening includes (3) "butterfly" spring clips to hold reflector assembly in place.

**Mounting:** Designed for installation in existing ceilings. Three high tension tempered steel springs secure remodel housings evenly to the ceiling; hole cutout template provided for convenience. Remodel frame-in accommodates ceiling thickness from 1/2" to 1-1/4".

**Minimum Clearances:** Frames require a minimum of 3" from thermal insulation and 1/2" from adjacent building component.

**Junction Box:** Plaster frame integrated 29 cubic inch 0.064" thick galvanized steel, with seven 1/2" knockouts, four pryouts, and snap on cover. Electrical connections are made through a single junction box door. Green wire provided for installations with ground wire fed through PVC pipe conduit. Junction box connects to reflector assembly with lockable quick connect.

**Thermal Protector:** Phase dimming drivers require an external thermal device, which is located on the junction box; Other drivers are thermally protected.

**Driver:** Isolated driver separates the primary side from the secondary side.

ELECTRICAL	L1	L2	L3	L4	L5	L6
<b>Input Voltage</b>	120VAC or 120/277VAC		120VAC or 277VAC			
<b>Input Power</b>	13W max.	18W max.	26W max.	38W max.	46W max.	60W max.
<b>Power Factor</b>	≥0.90					
<b>Dimming</b>	Triac/ELV or 0-10V					
<b>Operating Temperature</b>	0°C to 40°C	0°C to 40°C	0°C to 35°C	0°C to 35°C	0°C to 25°C	0°C to 25°C
<b>Compatible Reflectors</b>	NC3-81L1 NC3-86L1 NC3-88L1	NC3-81L2 NC3-86L2 NC3-88L2	NC3-81L3 NC3-86L3 NC3-88L3	NC3-81L4 NC3-86L4 NC3-88L4	NC3-81L5 NC3-86L5 NC3-88L5	NC3-81L6 NC3-86L6 NC3-88L6

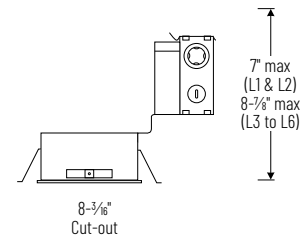
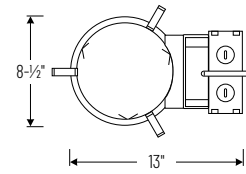
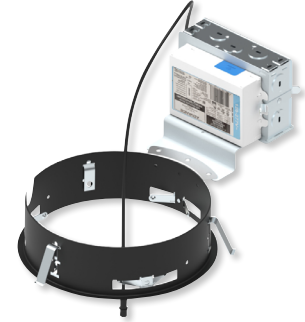
**Emergency:** Remodel frame-in can be wired with remote emergency driver and test switch ([NEPK-20LEDUNV](#)), requires ceiling access.

## LABELS AND LISTINGS

- cULus Listed for Damp Locations (Wet Locations when used with compatible reflector)
- [5-Year Limited Warranty](#)
- RoHS Compliant
- FCC Compliant
- Emergency LED Driver meets Title 20 CEC efficiency standards



## PRODUCT IMAGES AND DIMENSIONS



## 8" Sapphire III Remodel Frame-In - Compatible with Sapphire III Reflectors

Lumens / Wattage	Input Voltage / Dimming
<b>NCHR3-8L1</b> = 900lm / 13W	<b>P01</b> = 120V; Phase Dimming (Triac/ELV)
<b>NCHR3-8L2</b> = 1500lm / 18W	<b>C12</b> = 120/277V; 0-10V Dimming
<b>NCHR3-8L3</b> = 2500lm / 26W	<b>P01</b> = 120V; Phase Dimming (Triac/ELV)
<b>NCHR3-8L4</b> = 3500lm / 38W	<b>C01</b> = 120V; 0-10V Dimming
<b>NCHR3-8L5</b> = 4500lm / 46W	<b>C02</b> = 277V; 0-10V Dimming
<b>NCHR3-8L6</b> = 5500lm / 60W	

Example: **NCHR3-8L6C02** = 8" Sapphire III Remodel Frame-In, 5500lm / 60W, 277V input; 0-10V dimming

## Optional Accessories

Description
<b>NEPK-20LEDUNV</b> = Remote Emergency Battery w/Test Switch