

NFC-R725

New Construction Frame-In with Collar

Type

Project

Catalog No.

Notes

PRODUCT DESCRIPTION

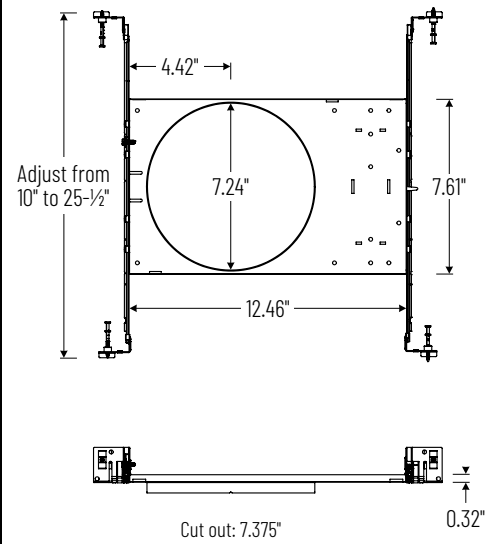
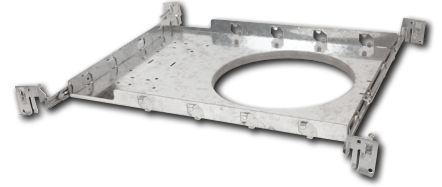
New construction frame-in with collar can be used to assist installing can-less downlights.

Mounting: Bar hangers are adjustable from 10" to 25-1/2" with integral nails. Bar hangers are slotted for T-bar ceiling grids.

COMPATIBLE LUMINAIRE

NLTH-81TW: 8" Theia LED Can-less Downlight with Selectable CCT

PRODUCT IMAGES AND DIMENSIONS



New Construction Frame-In with Collar

Description

NFC-R725 = New Construction Frame-In with Collar

Compatible Luminaire

Description

NLTH-81TW = 8" Theia LED Can-less Downlight with Selectable CCT

Example: **NFC-R430** = New Construction Frame-In with Collar