

# NSLIM-4REGLITWMPW

## 4" Regressed Slim LED Surface Mount with Selectable CCT

Source: 13W LED  
950lm

Type

Project

Catalog No.

Notes

### PRODUCT DESCRIPTION

Ultra slim regressed LED surface mount boasts a low-profile form factor, lending it a sleek design. Regressed light source gives the appearance of a recessed luminaire. The Slim is ideal for residential or commercial spaces and creates a polished aesthetic.

### FEATURES:

- Five color temperatures in each fixture (2700K / 3000K / 3500K / 4000K / 5000K)
- 5-year limited warranty
- cULus listed and classified for indoor wet locations

### SPECIFICATION

**Construction:** Aluminum surface mounted luminaire dissipates heat away from electrical components. An integral CCT switch changes the color temperature from 2700K to 5000K. Luminaire comes standard with a matte powder white round trim.

**Mounting:** Metal bracket used to surface mount over 4" metallic or non-metallic octagonal junction box and 4" round without lip.

### ELECTRICAL

**Input Voltage:** 120VAC

**Lumens / Wattage:** 950lm / 13W

**Color Temperature:** Selectable CCT: 27K / 30K / 35K / 40K / 50K (Note: Preset to 3000K)

**Color Rendering Index:** 90+CRI

**Operating Temperature:** -20°C to 40°C

**Dimming:** Triac (leading edge) or ELV (trailing edge)

[Click Here](#) or check complete dimmer list at [www.NoraLighting.com](http://www.NoraLighting.com) in the "Compatibility" page under "Resources" tab

### COMPATIBLE HOUSING

 ICAT Junction Box

### LABELS AND LISTINGS

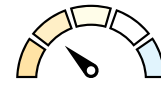
- cETLus listed and classified for indoor wet locations
- [5-Year Limited Warranty](#)
- Meets ASTM-E283 Air-Tight requirements
- FCC compliant
- Certified to the high efficacy requirements of California Title 24 JA8-2022
- Suitable for use in closets when installed in accordance to NEC Section 410.16 (A)(1) and 410.16 (C)(1)



### Performance Data

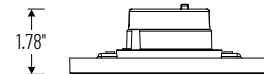
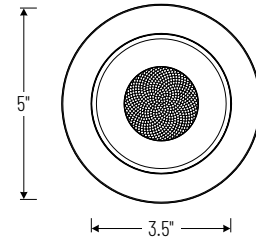
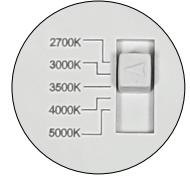
Part Number	Lumens	CCT
NSLIM-4REGLITWMPW	839lm	2700K
NSLIM-4REGLITWMPW	893lm	3000K
NSLIM-4REGLITWMPW	947lm	3500K
NSLIM-4REGLITWMPW	952lm	4000K
NSLIM-4REGLITWMPW	881lm	5000K

### PRODUCT IMAGES AND DIMENSIONS



#### Selectable CCT

Five position sliding switch  
27K / 30K / 35K / 40K / 50K



## 4" Regressed Slim LED Surface Mount with Selectable CCT

Face Plate Finish

NSLIM-4REGLITWMPW = Matte Powder White finish

Example: NSLIM-4REGLITWMPW = 4" Regressed Slim LED Surface Mount with Selectable CCT, Matte Powder White Finish

# PHOTOMETRICS

## 4" Regressed Slim LED Surface Mount with Selectable CCT

Type

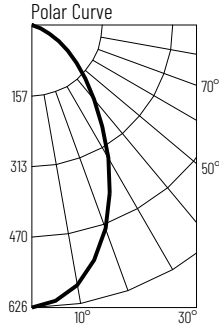
Project

Catalog No.

Notes

### Test Information

Test Number: NTS235R1  
 Part Number: NSLIM-4REGLITWMPW  
 Beam Spread: 64° Narrow Flood  
 Lumens: 839lm  
 Wattage: 12.73W  
 Efficacy: 66lpw  
 CCT / CRI: 2700K / 90 CRI  
 Spacing Criteria (0°-180°): 0.92  
 Spacing Criteria (90°-270°): 0.92



### Illuminance at a Distance

Distance from Luminaire	FC at Nadir	Beam Diameter
4'	39.1fc	5'
6'	17.4fc	7-6"
8'	9.8fc	10'
10'	6.3fc	12-6"
12'	4.4fc	15'

### Zonal Lumen Summary

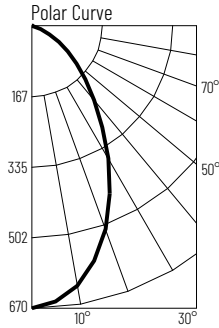
Zone	Lumens	% Luminaire
0-30	397	47.3
0-40	567	67.6
0-60	783	93.3
0-90	839	100
90-180	0	0
0-180	839	100

### Candela Table

Vertical Angles	Candela
0	626
5	611
15	537
25	410
35	274
45	169

### Test Information

Test Number: NTS236R1  
 Part Number: NSLIM-4REGLITWMPW  
 Beam Spread: 63° Narrow Flood  
 Lumens: 893lm  
 Wattage: 12.7W  
 Efficacy: 70lpw  
 CCT / CRI: 3000K / 90 CRI  
 Spacing Criteria (0°-180°): 0.92  
 Spacing Criteria (90°-270°): 0.92



### Illuminance at a Distance

Distance from Luminaire	FC at Nadir	Beam Diameter
4'	41.9fc	5'
6'	18.6fc	7-6"
8'	10.5fc	10'
10'	6.7fc	12-6"
12'	4.7fc	15'

### Zonal Lumen Summary

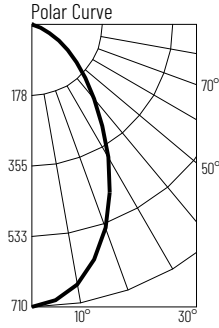
Zone	Lumens	% Luminaire
0-30	363	40.7
0-40	537	60.2
0-60	823	92.2
0-90	893	100
90-180	0	0
0-180	893	100

### Candela Table

Vertical Angles	Candela
0	670
5	654
15	574
25	438
35	292
45	179

### Test Information

Test Number: NTS237R1  
 Part Number: NSLIM-4REGLITWMPW  
 Beam Spread: 64° Narrow Flood  
 Lumens: 947lm  
 Wattage: 12.65W  
 Efficacy: 75lpw  
 CCT / CRI: 3500K / 90 CRI  
 Spacing Criteria (0°-180°): 0.92  
 Spacing Criteria (90°-270°): 0.92



### Illuminance at a Distance

Distance from Luminaire	FC at Nadir	Beam Diameter
4'	44.4fc	5'
6'	19.7fc	7-6"
8'	11.1fc	10'
10'	7.1fc	12-6"
12'	4.9fc	15'

### Zonal Lumen Summary

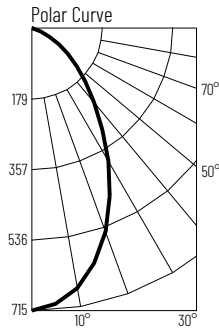
Zone	Lumens	% Luminaire
0-30	448	47.3
0-40	641	67.7
0-60	885	93.4
0-90	947	100
90-180	0	0
0-180	947	100

### Candela Table

Vertical Angles	Candela
0	710
5	696
15	611
25	465
35	311
45	191

### Test Information

Test Number: NTS238R1  
 Part Number: NSLIM-4REGLITWMPW  
 Beam Spread: 64° Narrow Flood  
 Lumens: 952lm  
 Wattage: 12.63W  
 Efficacy: 75lpw  
 CCT / CRI: 4000K / 90 CRI  
 Spacing Criteria (0°-180°): 0.92  
 Spacing Criteria (90°-270°): 0.92



### Illuminance at a Distance

Distance from Luminaire	FC at Nadir	Beam Diameter
4'	44.7fc	5'
6'	19.9fc	7-6"
8'	11.2fc	10'
10'	7.2fc	12-6"
12'	5fc	15'

### Zonal Lumen Summary

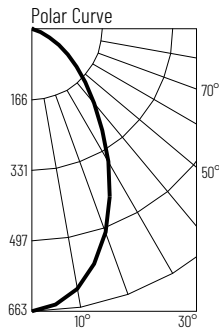
Zone	Lumens	% Luminaire
0-30	387	40.6
0-40	572	60.1
0-60	877	92.2
0-90	952	100
90-180	0	0
0-180	952	100

### Candela Table

Vertical Angles	Candela
0	715
5	702
15	615
25	468
35	313
45	191

### Test Information

Test Number: NTS239R1  
 Part Number: NSLIM-4REGLITWMPW  
 Beam Spread: 63° Narrow Flood  
 Lumens: 881lm  
 Wattage: 12.77W  
 Efficacy: 69lpw  
 CCT / CRI: 5000K / 90 CRI  
 Spacing Criteria (0°-180°): 0.92  
 Spacing Criteria (90°-270°): 0.92



### Illuminance at a Distance

Distance from Luminaire	FC at Nadir	Beam Diameter
4'	41.4fc	5'
6'	18.4fc	7-6"
8'	10.4fc	10'
10'	6.6fc	12-6"
12'	4.6fc	15'

### Zonal Lumen Summary

Zone	Lumens	% Luminaire
0-30	357	40.5
0-40	528	59.9
0-60	811	92.1
0-90	881	100
90-180	0	0
0-180	881	100

### Candela Table

Vertical Angles	Candela
0	663
5	655
15	571
25	433
35	289
45	177