

## NHAPIC-3S

### 3" Apollo Square IC Air-Tight New Construction Housing

Source: 10W to 20W LED  
1000lm to 2000lm

#### SPECIFICATION

**Precise Aiming:** Hot-aiming adjustment allows for 361° horizontal rotation and 45° vertical aiming. Optimized TIR optics directs the light through the center of the aperture for maximum efficiency and low aperture brightness.

**Housing:** Aluminum housing can be installed in ceiling thicknesses up to 2". Housing collar's include an aligning screw for perfect alignment. Collars are available for various ceiling thicknesses. Driver and LED are serviceable from below the ceiling.

**Air Flow Restriction:** Meets requirements of Air-Tight (AT) <2CFM (cubic feet per minute) in accordance with ASTM-283 Air-Tight requirements.

**Clearance:** "IC" Insulated ceiling housings are direct contact rated. Not to be used in direct contact with spray foam insulation.

**Bar Hangers:** Two 13-3/4" to 24-1/2" adjustable bar hangers with captive nails are included on housing. "L"-shaped bar hanger foot to align to bottom of construction joist. A T-bar notch allows for easy installation in a suspended ceiling.

**Junction Box:** Pre-wired 25 cubic inch 0.064" thick galvanized steel, with seven 1/2" knockouts and snap on covers. All leads are #18AWG wire, the ground wire is connected to the bottom, and quick connectors are supplied on all leads. Maximum of 8 no. 12 AWG through branch circuit conductors suitable for at least 90°C permitted in junction box. Junction box is accessible from the room side through housing opening.

**Romex Strain Relief:** Junction box includes two Romex tabs with two slots at each tab for NM-cables of 12/2 to 14/2. The strain relief allows for easy installation and less materials.

#### ELECTRICAL

**Input Voltage:** 120V, 120-277V or 120/277V

**Lumens / Wattage:**

1000lm / 10W (L1), 1500lm / 15W (L2), or 2000lm / 20W (L3)

**Color Temperature:** 2700K, 3000K, 3500K, 4000K

**Color Rendering Index:** 90+ CRI

**Dimming:** Phase, 0-10V, Casambi, DALI or Lutron

[Click Here](#) or check complete dimmer list at

www.NoraLighting.com in the "Compatibility" page under "Resources" tab

#### COMPATIBLE TRIMS

CATALOG NO. DESCRIPTION

[NAPF-3SDN](#) 3" Flanged Square Downlight

[NAPF-3SPH](#) 3" Flanged Square Pinhole

[NAPF-3SWW](#) 3" Flanged Square Wall Wash

[NAPT-3SDN](#) 3" Trimless / Wood Ceiling Square Downlight

[NAPT-3SPH](#) 3" Trimless / Wood Ceiling Square Pinhole

[NAPT-3SWW](#) 3" Trimless / Wood Ceiling Square Wall Wash

#### OPTIONAL ACCESSORIES

[NAPC-3S:](#) Extension Collar for Housings

[NAPC-3SQSLEEVE:](#) Sleeve Shade for Housings

[NAP0-3D:](#) Field Changeable TIR Optics

[NAP-TLMR-3S:](#) Trimless Mud Plate

#### LABELS AND LISTINGS

- cULus Listed for Damp Locations (Wet Locations when used with Clear Lens)
- [5-Year Limited Warranty](#)
- ENERGY STAR certified
- RoHS compliant
- FCC compliant
- Meets or exceeds ASTM-283 Air-Tight requirements



ELECTRICAL	P	C	C01	CAS	DAL	AWNR	L01
Input Voltage	120V	120-277V	120-277V	120/277V	120-277V	120-277V	120/277V
Compatible Wattages	10W to 20W	10W to 20W	10W to 20W	15W to 20W	15W to 20W	10W to 20W	10W to 20W
Dimming	Triac / ELV	0-10V	0-10V	Casambi	DALI 2	Athena	EcoSystem
Operating Temp.	0°-35°C	0°-35°C	0°-25°C	0°-35°C		0°-30°C	0°-25°C
Power Factor	≥0.90						

Type

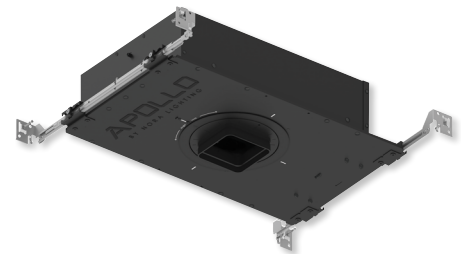
Project

Catalog No.

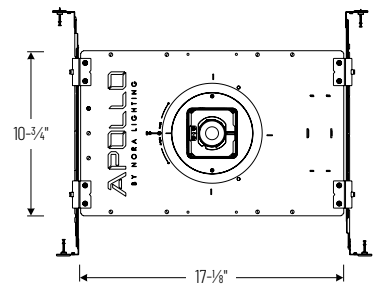
Notes

## APOLLO

#### PRODUCT IMAGES AND DIMENSIONS



Ceiling Cut-Out:  
3-3/4" x 3-3/4"



### 3" Apollo Square IC Air-Tight New Construction Housing

Ceiling Thickness	Lumens / Wattage	CCT	Beam Spread	Input Voltage / Dimming			
<b>NHAPIC-3S05</b> = 0.5" to 0.875"	<b>L1</b> = 1000lm / 10W	<b>27</b> = 2700K	<b>25D</b> = 26° Spot	<b>P</b> = 120V; Phase (1%)			
<b>NHAPIC-3S10</b> = 0.875" to 1.25"	<b>L2</b> = 1500lm / 15W	<b>30</b> = 3000K	<b>40D</b> = 38° Narrow Flood	<b>C</b> = 120-277V; 0-10V (1%)			
<b>NHAPIC-3S15</b> = 1.25" to 1.625"	<b>L3</b> = 2000lm / 20W	<b>35</b> = 3500K	<b>55D</b> = 55° Flood	<b>C01</b> = 120-277V; 0-10V (0.1%)			
<b>NHAPIC-3S20</b> = 1.625" to 2"		<b>40</b> = 4000K		<b>CAS</b> = 120/277V; Casambi (1%) <sup>1</sup>			
				<b>DAL</b> = 120-277V; DALI-2 (1%) <sup>1</sup>			
				<b>AWNR</b> = 120-277V; Lutron Athena (1%)			
				<b>L01</b> = Lutron EcoSystem 120/277V (0.1%)			

#### Notes:

<sup>1</sup> CAS & DAL not available with 1000lm (L1)

### Accessories

Description
<b>NAPC-3S05</b> = Ceiling Extension Collar (0.5" to 0.875")
<b>NAPC-3S10</b> = Ceiling Extension Collar (0.875" to 1.25")
<b>NAPC-3S15</b> = Ceiling Extension Collar (1.25" to 1.625")
<b>NAPC-3S20</b> = Ceiling Extension Collar (1.625" to 2")
<b>NAP0-3D25</b> = Replacement 26° TIR Optic
<b>NAP0-3D40</b> = Replacement 38° TIR Optic
<b>NAP0-3D55</b> = Replacement 55° TIR Optic
<b>NAP-TLMR-3S</b> = Round Trimless Mud Plate
<b>NAP-3SQSLEEVE</b> = Round Sleeve Shade for Housing Components

### 3" Apollo Square Trims

Ceiling Type	Trim Type	Finish	Optional Lens
<b>NAPF-3S</b> = Flanged	<b>DN</b> = Downlight	<b>B</b> = Black	<b>(blank)</b> = No Lens
<b>NAPT-3S</b> = Trimless & Wood Ceiling	<b>PH</b> = Pinhole	<b>BZ</b> = Bronze	<b>/CL</b> = Clear Lens (Wet Location)
	<b>WW</b> = Wall Wash	<b>HZ</b> = Haze <sup>2</sup>	
		<b>HZMPW</b> = Haze / Matte Powder White <sup>2</sup>	
		<b>MPW</b> = Matte Powder White	
		<b>WD</b> = Wheat Diffused	

#### Notes:

<sup>2</sup> HZ & HZMPW available with downlight (DN) only

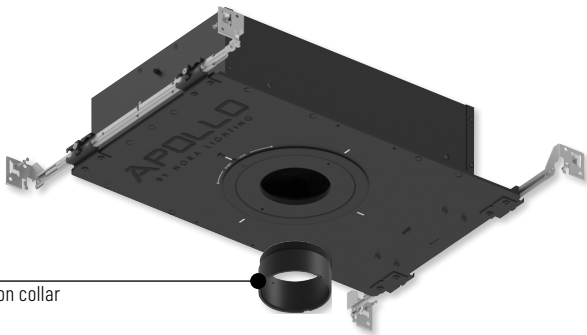
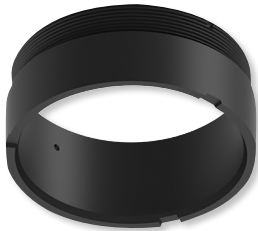
Example: **NHAPIC-3S05L33025DP** / **NAPF-3SDNMPW** = 3" Apollo Square IC Air-Tight New Construction Housing, 2000lm / 20W, 3000K, Spot Optic, 120V input; Phase dimming / 3" Flanged Downlight, Matte Powder White Finish

NHAPIC-3S Accessories

3" Apollo Square IC Air-Tight New Construction Housing

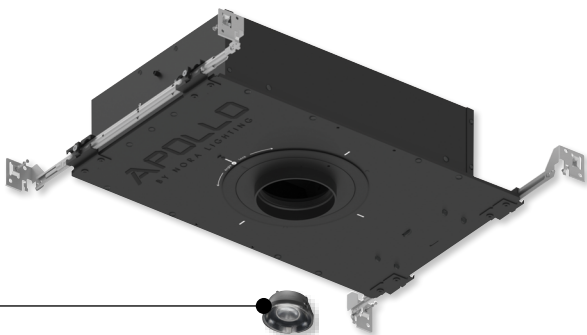
Type
Project
Catalog No.
Notes

- NAPC-3S05 0.5" to 0.875" Ceiling Extension Collar
- NAPC-3S10 0.875" to 1.25" Ceiling Extension Collar
- NAPC-3S15 1.25" to 1.625" Ceiling Extension Collar
- NAPC-3S20 1.625" to 2" Ceiling Extension Collar



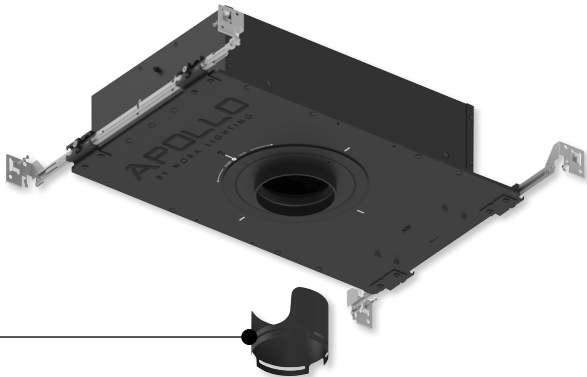
Field changeable extension collar

- NAP0-3D25 Replacement 26° TIR Optic
- NAP0-3D40 Replacement 38° TIR Optic
- NAP0-3D55 Replacement 55° TIR Optic



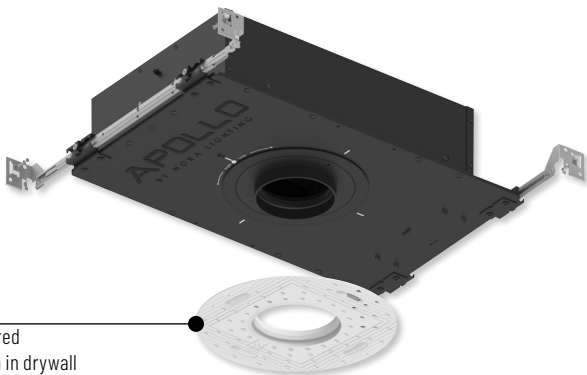
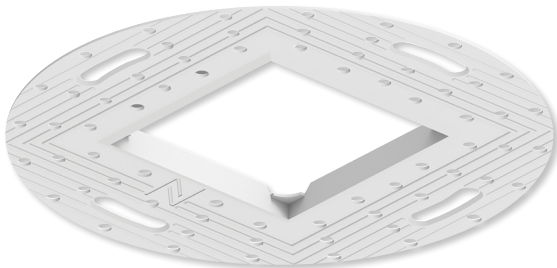
Field changeable optics

- NAP-3SQSLEEVE Round sleeve shade to shield housing components



Sleeve shade covers housing components

- NAP-TLMR-3S Round trimless mud plate for installation in gypsum with plaster.



Trimless mud plate required for flangeless installation in drywall