

# NUDA

## 120V Adjustable LEDUR Under Cabinet with Selectable CCT

Source: 7W to 20W

600lm per foot

Type

Project

Catalog No.

Notes

### PRODUCT DESCRIPTION

120V Adjustable LED under cabinet luminaires include two switches to change the color temperature and On/Off switch. Each fixture includes five color temperature options and are linkable up to 150W. Luminaires produces an average of 550 lumens per foot. LEDUR uniform reflectance is excellent when used under cabinet over granite, polished stone or any reflective surface, additionally it is excellent in retail display lighting where diode image might distract from display merchandise.

### FEATURES

- Adjustable lens rotates up to 35°
- Five color temperatures in each fixture (2700K / 3000K / 3500K / 4000K / 5000K)
- Produces over 600 lumens per foot
- Edge lit design eliminates LED diode image
- Available in five different lengths
- Black or Matte Powder White Finish
- Built-in on/off rocker switch
- USB-C & USB-A ports (NUDA-10 does not have USB ports)
- Linkable up to 150 Watts
- 3 wire grounded electrical port on both ends for power or linking
- Quick connect stab-in connectors included
- Captive Screws for easy mounting
- Integral dimmable driver

### ELECTRICAL

**Input Voltage:** 120VAC

**Lumens:** 600lm per foot

**Wattage:**

**10" = 7W; 16" = 11W; 24" = 15W; 32" = 16.5W; 42" = 20W**

**USB charging:** 5V, 2.1A

(Note: USB charging performs best with a direct line/neutral connection. While it can also be used with a dimmer, charging performance is optimized when the dimmer is set to full output.)

**Color Temperature:** Selectable CCT: 2700K / 3000K / 3500K / 4000K / 5000K (Note: Preset to 3000K)

**Color Rendering Index:** 90+ CRI

**Operating Temperature:** -20°C to 40°C ambient temperature

**Maximum Run Length:** 150W

**Dimming:** Dimmable down to 10% with Triac or ELV

[Click Here](#) or check complete dimmer list at [www.NoraLighting.com](http://www.NoraLighting.com) in the "Compatibility" page under "Resources" tab.

### CONSTRUCTION

**Housing:** Rear wireway access cover with stab-in electrical connectors facilitate wiring without opening the fixture. Additional knock-outs for top and back wiring.

**Installation:** Mounting hardware is included with each unit. Captive screws allow for quick installation, simply wire using rear door and quick connects, and hold in place and drive captive screws into material. Captives screws are covered with an included cap for a beautiful finished look.

**Included with every fixture:** Mounting Hardware and 1/2" die-cast metallic cable clamp and end to end connector.

### LABELS AND LISTINGS

- cETLus Listed for Damp Locations
- [5-Year Limited Warranty](#)
- Certified to the high efficacy requirements of California Title 24 JA8-2022
- FCC Compliant

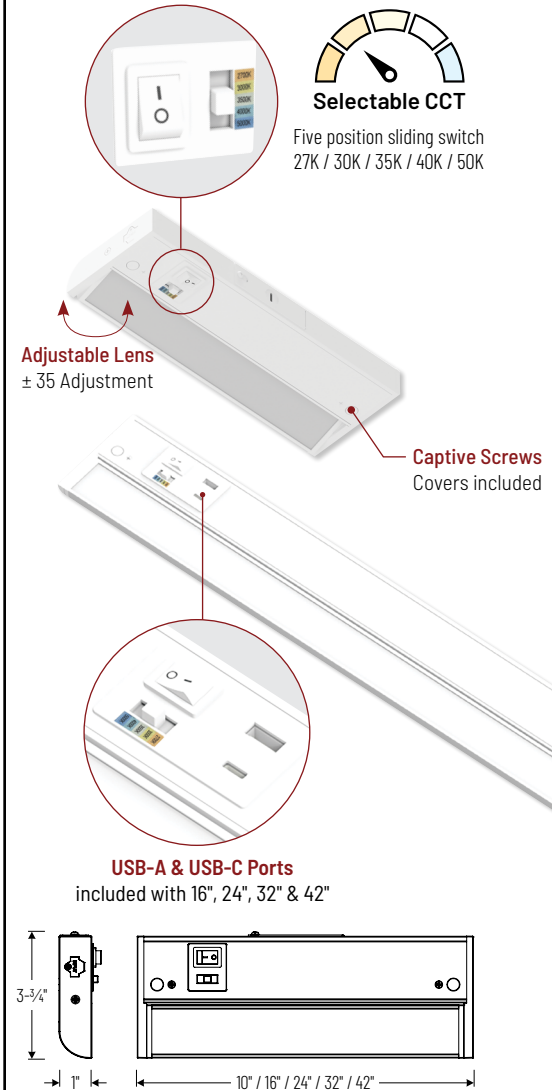


### Performance Data

Part Number	2700K	3000K	3500K	4000K	5000K
<b>NUDA-10TW</b>	510lm	530lm	555lm	568lm	555lm
<b>NUDA-16TW</b>	827lm	852lm	888lm	903lm	895lm
<b>NUDA-24TW</b>	1270lm	1295lm	1357lm	1375lm	1359lm
<b>NUDA-32TW</b>	1323lm	1379lm	1425lm	1445lm	1440lm
<b>NUDA-42TW</b>	1507lm	1559lm	1620lm	1652lm	1655lm

Delivered lumens shown with MPW finish. Black finish = x0.86

### PRODUCT IMAGES AND DIMENSIONS



## 120V Adjustable LEDUR Under Cabinet with Selectable CCT

Length	Finish	USB Port
<b>NUDA-10TW = 10"</b>	<b>B</b> = Black <b>MPW</b> = Matte Powder White	<b>(blank)</b> = Not Included
<b>NUDA-16TW = 16"</b> <b>NUDA-24TW = 24"</b> <b>NUDA-32TW = 32"</b> <b>NUDA-42TW = 42"</b>	<b>B</b> = Black <b>MPW</b> = Matte Powder White	<b>/USB</b> = USB ports included

## Accessories

Description	Finish
<b>NUA-902</b> = Junction Box	<b>B</b> = Black
<b>NUDA-HW72</b> = 72" Hardware Power Cord	<b>MPW</b> = Matte Powder White
<b>NUDA-CP72</b> = 72" Cord & Plug	
<b>NUDA-END</b> = End-to-End Connector	
<b>NUDA-JC06</b> = 6" Jumper Cable	
<b>NUDA-JC12</b> = 12" Jumper Cable	
<b>NUDA-JC24</b> = 24" Jumper Cable	
<b>NUDA-JC72</b> = 72" Jumper Cable	

Example: **NUDA-24TWMPW/USB** = 24" 120V Adjustable LEDUR Under Cabinet with Selectable CCT & USB ports, Matte Powder White Finish

NUDA

120V Adjustable LEDUR Under Cabinet Accessories  
Source: 7W to 20W  
600lm per foot

Type

Project

Catalog No.

Notes



Junction Box

**NUA-902B** Black  
**NUA-902W** Matte Powder White  
Used to power (2) NUDA fixtures using hardwire cords (NUDA-HW).



72" 3-Wire Hardwire Power Cord

**NUDA-HW72B** Black  
**NUDA-HW72W** Matte Powder White  
Used to hardwire NUDA fixtures to NUA-902 or junction box (by others).



72" Cord & Plug

**NUDA-CP72B** Black  
**NUDA-CP72W** Matte Powder White  
Used to connect NUDA fixtures to three-prong outlet.



End to End Connector

**NUDA-END**  
Used to join two NUDA fixtures seamlessly together. 3-wire grounded connector.



Jumper Cables

**NUDA-JC06B** 6" Black  
**NUDA-JC06W** 6" Matte Powder White  
**NUDA-JC12B** 12" Black  
**NUDA-JC12W** 12" Matte Powder White  
**NUDA-JC24B** 24" Black  
**NUDA-JC24W** 24" Matte Powder White  
**NUDA-JC72B** 72" Black  
**NUDA-JC72W** 72" Matte Powder White  
Used to join (2) NUDA fixtures together.