

NHAP-3R

3" Apollo Round Non-IC Air-Tight New Construction Housing

Source: 26W or 30W LED
2500lm or 3000lm

SPECIFICATION

Precise Aiming: Hot-aiming adjustment allows for 361° horizontal rotation and 45° vertical aiming. Optimized TIR optics directs the light through the center of the aperture for maximum efficiency and low aperture brightness.

Housing: Aluminum housing can be installed in ceiling thicknesses up to 2". Housing collar accessories are also available. Driver and LED are serviceable from below the ceiling.

Air Flow Restriction: Meets requirements of Air-Tight (AT) <2CFM (cubic feet per minute) in accordance with ASTM-283 Air-Tight requirements.

Clearance: Non-insulated housings require a minimum clearance of 3" from thermal insulation and 1/2" from adjacent building components.

Bar Hangers: Two 13-3/4" to 24-1/2" adjustable bar hangers with captive nails are included on housing. "L"-shaped bar hanger foot to align to bottom of construction joist. A T-bar notch allows for easy installation in a suspended ceiling.

Junction Box: Pre-wired 25 cubic inch 0.064" thick galvanized steel, with seven 1/2" knockouts and snap on covers. All leads are #18AWG wire, the ground wire is connected to the bottom, and quick connectors are supplied on all leads. Maximum of 8 no. 12 AWG through branch circuit conductors suitable for at least 90°C permitted in junction box. Junction box is accessible from the room side through housing opening.

Romex Strain Relief: Junction box includes two Romex tabs with two slots at each tab for NM-cables of 12/2 to 14/2. The strain relief allows for easy installation and less materials.

ELECTRICAL

Input Voltage: 120-277V or 120/277V

Lumens / Wattage:

2500lm / 26W (L4) or 3000lm / 30W (L5)

Color Temperature: 2700K, 3000K, 3500K, 4000K

Color Rendering Index: 90+ CRI

Dimming: Phase, 0-10V, Casambi, DALI or Lutron

[Click Here](#) or check complete dimmer list at

www.NoraLighting.com in the "Compatibility" page under "Resources" tab

COMPATIBLE TRIMS

CATALOG NO.	DESCRIPTION
-------------	-------------

NAPF-3RDN	3" Flanged Round Downlight
---------------------------	----------------------------

NAPF-3RPH	3" Flanged Round Pinhole
---------------------------	--------------------------

NAPF-3RWW	3" Flanged Round Wall Wash
---------------------------	----------------------------

NAPT-3RDN	3" Trimless / Wood Ceiling Round Downlight
---------------------------	--

NAPT-3RPH	3" Trimless / Wood Ceiling Round Pinhole
---------------------------	--

NAPT-3RWW	3" Trimless / Wood Ceiling Round Wall Wash
---------------------------	--

OPTIONAL ACCESSORIES

[NAPC-3R:](#) Extension Collar for Housings

[NAPC-3RDSLEEVE:](#) Sleeve Shade for Housings

[NAPO-3D:](#) Field Changeable TIR Optics

[NAP-TLMR-3R:](#) Trimless Mud Plate

LABELS AND LISTINGS

- cULus Listed for Damp Locations (Wet Locations when used with Clear Lens)
- [5-Year Limited Warranty](#)
- RoHS compliant
- FCC compliant
- Meets or exceeds ASTM-283 Air-Tight requirements



Type

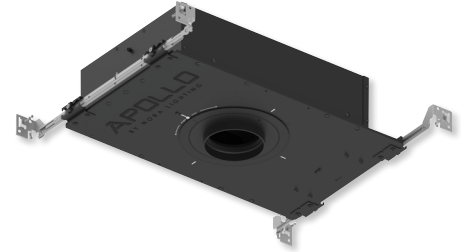
Project

Catalog No.

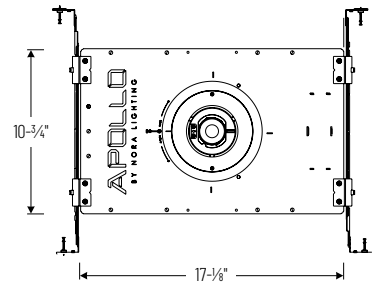
Notes

APOLLO

PRODUCT IMAGES AND DIMENSIONS



Ceiling Cut-Out:
3-3/8"



ELECTRICAL	T		CAS	DAL	AWNRR
Input Voltage	120/277V		120/277V	120-277V	120-277V
Compatible Wattage	26W	30W	26W	26W	26W
Dimming	Triac / ELV / 0-10V		Casambi	DALI 2	Athena
Operating Temp.	0°-40°C	0°-35°C	0°-40°C		0°-30°C
Power Factor	≥0.90				

3" Apollo Round Non-IC Air-Tight New Construction Housing

Ceiling Thickness	Lumens / Wattage	CCT	Beam Spread	Input Voltage / Dimming
NHAP-3R05 = 0.5" to 0.875"	L4 = 2500lm / 26W	27 = 2700K	25D = 26° Spot	T = 120/277V; Phase or 0-10V (1%)
NHAP-3R10 = 0.875" to 1.25"	L5 = 3000lm / 30W	30 = 3000K	40D = 38° Narrow Flood	CAS = 120/277V; Casambi (1%) ¹
NHAP-3R15 = 1.25" to 1.625"		35 = 3500K	55D = 55° Flood	DAL = 120-277V; DALI-2 (1%) ¹
NHAP-3R20 = 1.625" to 2"		40 = 4000K		AWNRR = 120-277V; Lutron Athena (1%) ¹

Notes:

¹ CAS, DAL & AWNR not available with 3000lm / 30W (L5)

3" Apollo Round Trims

Ceiling Type	Trim Type	Finish	Optional Lens
NAPF-3R = Flanged	DN = Downlight	B = Black	(blank) = No Lens
NAPT-3R = Trimless & Wood Ceiling	PH = Pinhole	BZ = Bronze	/CL = Clear Lens (Wet Location)
	WW = Wall Wash	HZ = Haze ²	
		HZMPW = Haze / Matte Powder White ²	
		MPW = Matte Powder White	
		WD = Wheat Diffused	

Notes:

² HZ & HZMPW available with downlight (DN) only

Accessories

Description
NAPC-3R05 = Ceiling Extension Collar (0.5" to 0.875")
NAPC-3R10 = Ceiling Extension Collar (0.875" to 1.25")
NAPC-3R15 = Ceiling Extension Collar (1.25" to 1.625")
NAPC-3R20 = Ceiling Extension Collar (1.625" to 2")
NAPO-3D25 = Replacement 26° TIR Optic
NAPO-3D40 = Replacement 38° TIR Optic
NAPO-3D55 = Replacement 55° TIR Optic
NAP-TLMR-3R = Round Trimless Mud Plate
NAP-3RDSLEEVE = Round Sleeve Shade for Housing Components

Example: NHAP-3R05L53025DT / NAPF-3RDNMPW = 3" Apollo Round Non-IC Air-Tight New Construction Housing, 3000lm / 30W, 3000K, Spot Optic, 120/277V input; Phase or 0-10V dimming / 3" Flanged Downlight, MPW finish

NHAP-3R Accessories

3" Apollo Round Non-IC Air-Tight New Construction Housing

Type

Project

Catalog No.

Notes

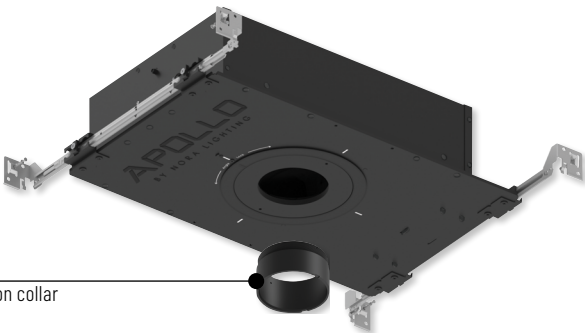
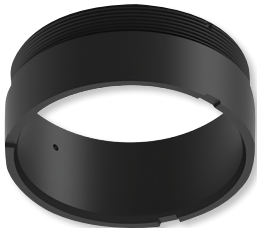
- NAPC-3R05

0.5" to 0.875" Ceiling Extension Collar
- NAPC-3R10

0.875" to 1.25" Ceiling Extension Collar
- NAPC-3R15

1.25" to 1.625" Ceiling Extension Collar
- NAPC-3R20

1.625" to 2" Ceiling Extension Collar



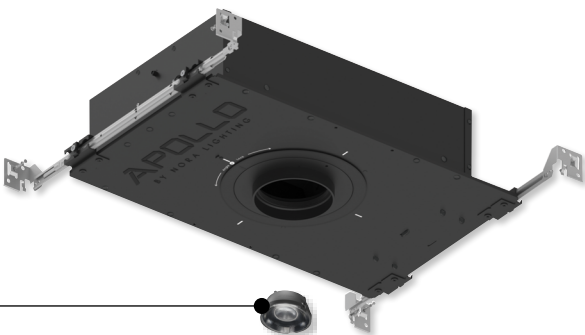
Field changeable extension collar

- NAP0-3D25

Replacement 26° TIR Optic
- NAP0-3D40

Replacement 38° TIR Optic
- NAP0-3D55

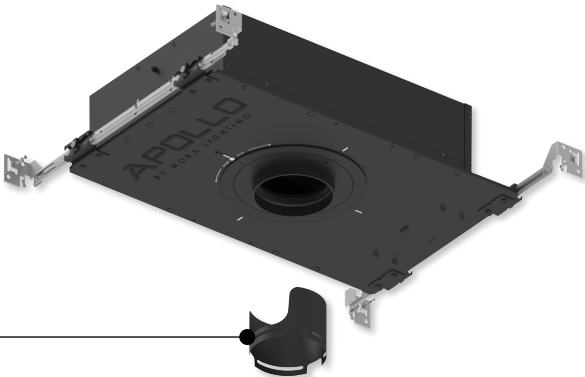
Replacement 55° TIR Optic



Field changeable optics

- NAP-3RDSLEEVE

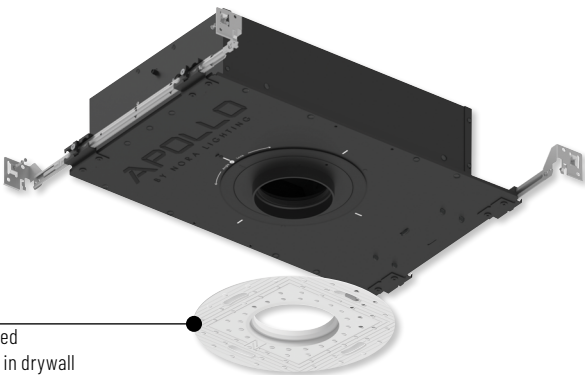
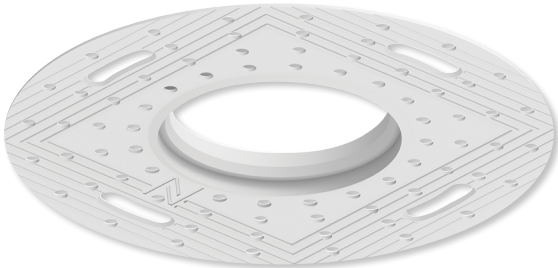
Round sleeve shade to shield housing components



Sleeve shade covers housing components

- NAP-TLMR-3R

Round trimless mud plate for installation in gypsum with plaster.



Trimless mud plate required for flangeless installation in drywall