

NHAPNIC-3R

3" Apollo Round IC Air-Tight New Construction Housing with Fixed Spot Optic

Source: 20W or 24W LED
1000lm or 1500lm

SPECIFICATION

Precise Aiming: Hot-aiming adjustment allows for 361° horizontal rotation and 45° vertical aiming. Optimized TIR optics directs the light through the center of the aperture for maximum efficiency and low aperture brightness.

Housing: Aluminum housing can be installed in ceiling thicknesses up to 2". Housing collar accessories are also available. Driver and LED are serviceable from below the ceiling.

Air Flow Restriction: Meets requirements of Air-Tight (AT) <2CFM (cubic feet per minute) in accordance with ASTM-283 Air-Tight requirements.

Clearance: "IC" Insulated ceiling housings are direct contact rated. Not to be used in direct contact with spray foam insulation.

Bar Hangers: Two 13-3/4" to 24-1/2" adjustable bar hangers with captive nails are included on housing. "L"-shaped bar hanger foot to align to bottom of construction joist. A T-bar notch allows for easy installation in a suspended ceiling.

Junction Box: Pre-wired 25 cubic inch 0.064" thick galvanized steel, with seven 1/2" knockouts and snap on covers. All leads are #18AWG wire, the ground wire is connected to the bottom, and quick connectors are supplied on all leads. Maximum of 8 no. 12 AWG through branch circuit conductors suitable for at least 90°C permitted in junction box. Junction box is accessible from the room side through housing opening.

Romex Strain Relief: Junction box includes two Romex tabs with two slots at each tab for NM-cables of 12/2 to 14/2. The strain relief allows for easy installation and less materials.

ELECTRICAL

Input Voltage: See chart below

Lumens / Wattage: 1000lm / 20W or 1500lm / 24W

LED Binning: 3-Step (SDCM)

Color Temperature: 2700K, 3000K, 3500K, 4000K

Color Rendering Index: 90+ CRI

Power Factor: ≥0.90

Dimming: Phase, 0-10V, Casambi, DALI or Lutron

[Click Here](#) or check complete dimmer list at www.NoraLighting.com in the "Compatibility" page under "Resources" tab

COMPATIBLE TRIMS

CATALOG NO. DESCRIPTION

NAPF-3RDN	3" Flanged Round Downlight
NAPF-3RPH	3" Flanged Round Pinhole
NAPF-3RWW	3" Flanged Round Wall Wash
NAPT-3RDN	3" Trimless / Wood Ceiling Round Downlight
NAPT-3RPH	3" Trimless / Wood Ceiling Round Pinhole
NAPT-3RWW	3" Trimless / Wood Ceiling Round Wall Wash

OPTIONAL ACCESSORIES

[NAPC-3R:](#) Extension Collar for Housings

[NAP-3RDSLEEVE:](#) Sleeve Shade for Housings

[NAP-TLMR-3R:](#) Trimless Mud Plate

LABELS AND LISTINGS

- cULus Listed for Damp Locations (Wet Locations when used with Clear Lens)
- [5-Year Limited Warranty](#)
- RoHS & FCC compliant
- Certified to the requirements of CA Title 24 JA8-2022 (Pinhole trims are not compliant)
- Meets or exceeds ASTM-283 Air-Tight requirements



ELECTRICAL	P	C	C01	CAS	DAL	AWNR	L01
Input Voltage	120V	120-277V		120/277V	120-277V		120/277V
Compatible Wattages				20W or 24W			
Dimming	Triac / ELV	0-10V		Casambi	DALI 2	Athena	EcoSystem
Operating Temp.	0°-30°C	0°-25°C		0°-30°C		0°-25°C	
Power Factor				≥0.90			

3" Apollo IC Air-Tight New Construction Housing with Fixed Spot Optics

Ceiling Thickness	Lumens / Wattage	CCT	Beam Spread	Input Voltage / Dimming
NHAPNIC-3R05 = 0.5" to 0.875"	L2 = 1000lm / 20W ¹	27 = 2700K	12D = 12° Narrow Spot ¹	P = 120V; Phase (1%)
NHAPNIC-3R10 = 0.875" to 1.25"	L3 = 1500lm / 24W ²	30 = 3000K	15D = 15° Narrow Spot ²	C = 120-277V; 0-10V (1%)
NHAPNIC-3R15 = 1.25" to 1.625"		35 = 3500K		C01 = 120-277V; 0-10V (0.1%)
NHAPNIC-3R20 = 1.625" to 2"		40 = 4000K		CAS = 120/277V; Casambi (1%)
				DAL = 120-277V; DALI-2 (1%)
				AWNR = 120-277V; Lutron Athena (1%)
				L01 = 120/277V; Lutron EcoSystem (0.1%)

Notes:

¹ Fixed 12° optic only available with 1000lm (L2)

² Fixed 15° optic only available with 1500lm (L3)

3" Apollo Round Trims

Ceiling Type	Trim Type	Finish	Optional Lens
NAPF-3R = Flanged	DN = Downlight	B = Black	(blank) = No Lens
NAPT-3R = Trimless & Wood Ceiling	PH = Pinhole	BZ = Bronze	/CL = Clear Lens (Wet Location)
	WW = Wall Wash	HZ = Haze ³	
		HZMPW = Haze / Matte Powder White ³	
		MPW = Matte Powder White	
		WD = Wheat Diffused	

Notes:

³ HZ & HZMPW available with downlight (DN) only

Type

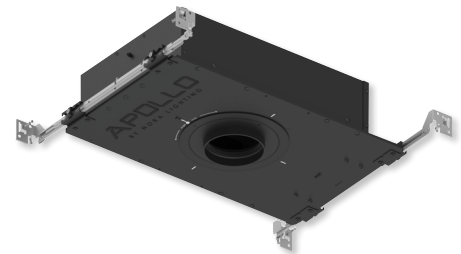
Project

Catalog No.

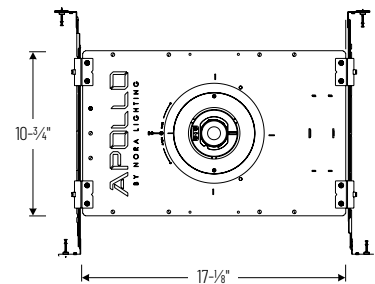
Notes

APOLLO

PRODUCT IMAGES AND DIMENSIONS



Ceiling Cut-Out:
3-3/8"



Accessories

Description
NAPC-3R05 = Ceiling Extension Collar (0.5" to 0.875")
NAPC-3R10 = Ceiling Extension Collar (0.875" to 1.25")
NAPC-3R15 = Ceiling Extension Collar (1.25" to 1.625")
NAPC-3R20 = Ceiling Extension Collar (1.625" to 2")
NAP-TLMR-3R = Round Trimless Mud Plate
NAP-3RDSLEEVE = Round Sleeve Shade for Housing Components

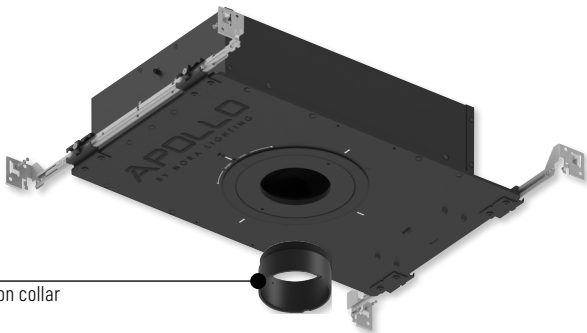
Example: **NHAPNIC-3R05L33015DP / NAPF-3RDNMPW** = 3" Apollo IC Air-Tight New Construction Housing, 1500lm / 24W, 3000K, 15° Spot Optic, 120V input; Phase dimming / 3" Flanged Round Downlight, Matte Powder White

NHAPNIC-3R Accessories

3" Apollo Round IC Air-Tight New Construction Housing with Fixed Spot Optic

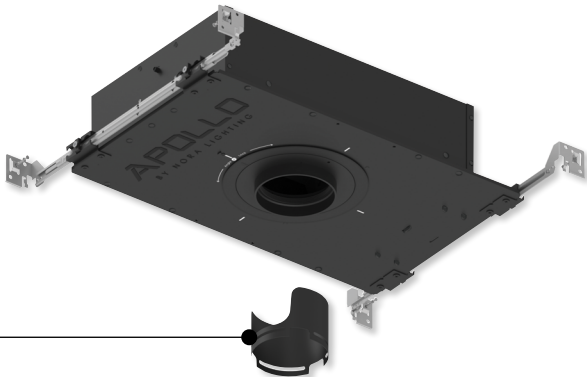
Type	
Project	
Catalog No.	
Notes	

- NAPC-3R05 0.5" to 0.875" Ceiling Extension Collar
- NAPC-3R10 0.875" to 1.25" Ceiling Extension Collar
- NAPC-3R15 1.25" to 1.625" Ceiling Extension Collar
- NAPC-3R20 1.625" to 2" Ceiling Extension Collar



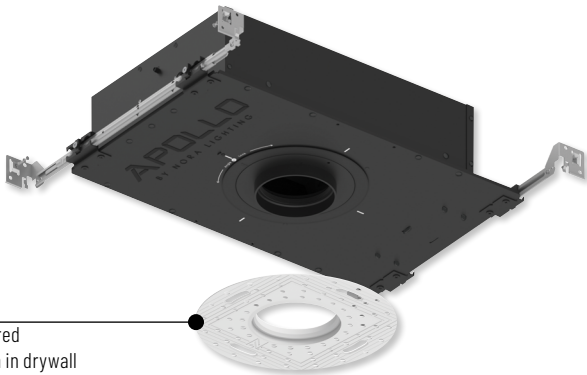
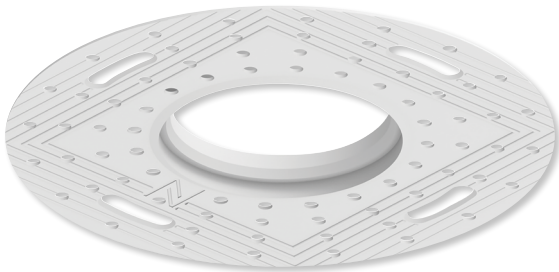
Field changeable extension collar

- NAP-3RDSLEEVE Round sleeve shade to shield housing components



Sleeve shade covers housing components

- NAP-TLMR-3R Round trimless mud plate for installation in gypsum with plaster.



Trimless mud plate required for flangeless installation in drywall