

NHAPNIC-3S

3" Apollo Square IC Air-Tight New Construction Housing with Fixed Spot Optic

Source: 20W or 24W LED
1000lm or 1500lm

SPECIFICATION

Precise Aiming: Hot-aiming adjustment allows for 361° horizontal rotation and 45° vertical aiming. Optimized TIR optics directs the light through the center of the aperture for maximum efficiency and low aperture brightness.

Housing: Aluminum housing can be installed in ceiling thicknesses up to 2". Housing collar's include an aligning screw for perfect alignment. Collars are available for various ceiling thicknesses. Driver and LED are serviceable from below the ceiling.

Air Flow Restriction: Meets requirements of Air-Tight (AT) <2CFM (cubic feet per minute) in accordance with ASTM-283 Air-Tight requirements.

Clearance: "IC" Insulated ceiling housings are direct contact rated. Not to be used in direct contact with spray foam insulation.

Bar Hangers: Two 13-3/4" to 24-1/2" adjustable bar hangers with captive nails are included on housing. "L"-shaped bar hanger foot to align to bottom of construction joist. A T-bar notch allows for easy installation in a suspended ceiling.

Junction Box: Pre-wired 25 cubic inch 0.064" thick galvanized steel, with seven 1/2" knockouts and snap on covers. All leads are #18AWG wire, the ground wire is connected to the bottom, and quick connectors are supplied on all leads. Maximum of 8 no. 12 AWG through branch circuit conductors suitable for at least 90°C permitted in junction box. Junction box is accessible from the room side through housing opening.

Romex Strain Relief: Junction box includes two Romex tabs with two slots at each tab for NM-cables of 12/2 to 14/2. The strain relief allows for easy installation and less materials.

ELECTRICAL

Input Voltage: See chart below

Lumens / Wattage: 1000lm / 20W or 1500lm / 24W

LED Binning: 3-Step (SDCM)

Color Temperature: 2700K, 3000K, 3500K, 4000K

Color Rendering Index: 90+ CRI

Power Factor: ≥0.90

Dimming: Phase, 0-10V, Casambi, DALI or Lutron

[Click Here](#) or check complete dimmer list at www.NoraLighting.com in the "Compatibility" page under "Resources" tab

COMPATIBLE TRIMS

CATALOG NO. DESCRIPTION

[NAPF-3SDN](#) 3" Flanged Square Downlight

[NAPF-3SPH](#) 3" Flanged Square Pinhole

[NAPF-3SWW](#) 3" Flanged Square Wall Wash

[NAPT-3SDN](#) 3" Trimless / Wood Ceiling Square Downlight

[NAPT-3SPH](#) 3" Trimless / Wood Ceiling Square Pinhole

[NAPT-3SWW](#) 3" Trimless / Wood Ceiling Square Wall Wash

OPTIONAL ACCESSORIES

[NAPC-3S:](#) Extension Collar for Housings

[NAP-3S0SLEEVE:](#) Sleeve Shade for Housings

[NAP-TLMR-3S:](#) Trimless Mud Plate

LABELS AND LISTINGS

- cULus Listed for Damp Locations (Wet Locations when used with Clear Lens)
- [5-Year Limited Warranty](#)
- RoHS & FCC compliant
- Certified to the requirements of CA Title 24 JA8-2022
- Meets or exceeds ASTM-283 Air-Tight requirements



ELECTRICAL	P	C	C01	CAS	DAL	AWNR	L01
Input Voltage	120V	120-277V		120/277V	120-277V		120/277V
Compatible Wattages	20W or 24W						
Dimming	Triac / ELV	0-10V		Casambi	DALI 2	Athena	EcoSystem
Operating Temp.	0°-30°C	0°-25°C		0°-30°C		0°-25°C	
Power Factor	≥0.90						

3" Apollo IC Air-Tight New Construction Housing with Fixed Spot Optics

Ceiling Thickness	Lumens / Wattage	CCT	Beam Spread	Input Voltage / Dimming
NHAPNIC-3S05 = 0.5" to 0.875"	L2 = 1000lm / 20W ¹	27 = 2700K	120 = 12° Narrow Spot ¹	P = 120V; Phase (1%)
NHAPNIC-3S10 = 0.875" to 1.25"	L3 = 1500lm / 24W ²	30 = 3000K	150 = 15° Narrow Spot ²	C = 120-277V; 0-10V (1%)
NHAPNIC-3S15 = 1.25" to 1.625"		35 = 3500K		C01 = 120-277V; 0-10V (0.1%)
NHAPNIC-3S20 = 1.625" to 2"		40 = 4000K		CAS = 120/277V; Casambi (1%)
				DAL = 120-277V; DALI-2 (1%)
				AWNR = 120-277V; Lutron Athena (1%)
				L01 = 120/277V; Lutron EcoSystem (0.1%)

Notes:
¹ Fixed 12° optic only available with 1000lm (L2)
² Fixed 15° optic only available with 1500lm (L3)

3" Apollo Square Trims

Ceiling Type	Trim Type	Finish	Optional Lens
NAPF-3S = Flanged	DN = Downlight	B = Black	(blank) = No Lens
NAPT-3S = Trimless & Wood Ceiling	PH = Pinhole	BZ = Bronze	/CL = Clear Lens (Wet Location)
	WW = Wall Wash	HZ = Haze ²	
		HZMPW = Haze / Matte Powder White ²	
		MPW = Matte Powder White	
		WD = Wheat Diffused	

Notes:
² HZ & HZMPW available with downlight (DN) only

Type

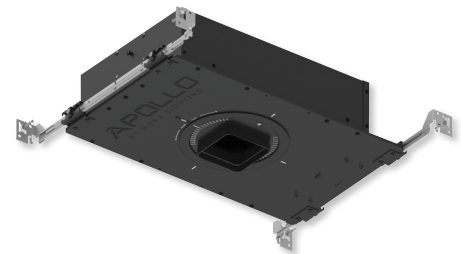
Project

Catalog No.

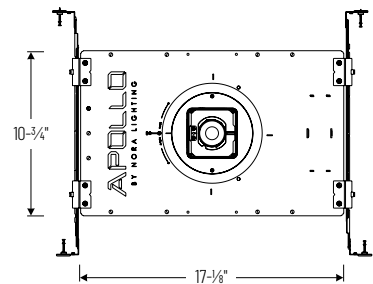
Notes

APOLLO

PRODUCT IMAGES AND DIMENSIONS



Ceiling Cut-Out:
3-3/4" x 3-3/4"



Accessories

Description
NAPC-3S05 = Ceiling Extension Collar (0.5" to 0.875")
NAPC-3S10 = Ceiling Extension Collar (0.875" to 1.25")
NAPC-3S15 = Ceiling Extension Collar (1.25" to 1.625")
NAPC-3S20 = Ceiling Extension Collar (1.625" to 2")
NAP-TLMR-3S = Square Trimless Mud Plate
NAP-3S0SLEEVE = Square Sleeve Shade for Housing Components

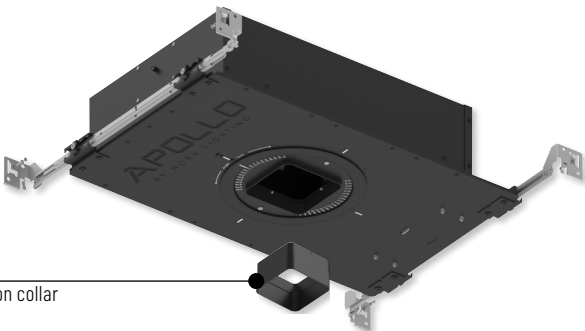
Example: NHAPIC-3S05L33015DP / NAPF-3SDNMPW = 3" Apollo Square IC Air-Tight New Construction Housing, 1500lm / 24W, 3000K, 15° Spot Optic, 120V input; Phase dimming / 3" Flanged Downlight, Matte Powder White

NHAPNIC-3S Accessories

3" Apollo Square IC Air-Tight New Construction Housing with Fixed Spot Optic

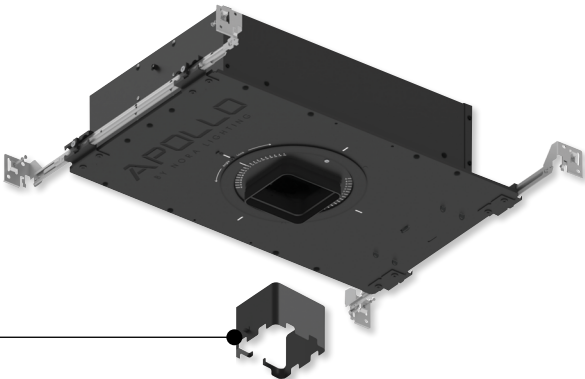
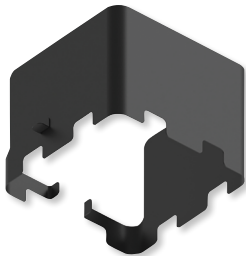
Type	
Project	
Catalog No.	
Notes	

- NAPC-3S05 0.5" to 0.875" Ceiling Extension Collar
- NAPC-3S10 0.875" to 1.25" Ceiling Extension Collar
- NAPC-3S15 1.25" to 1.625" Ceiling Extension Collar
- NAPC-3S20 1.625" to 2" Ceiling Extension Collar



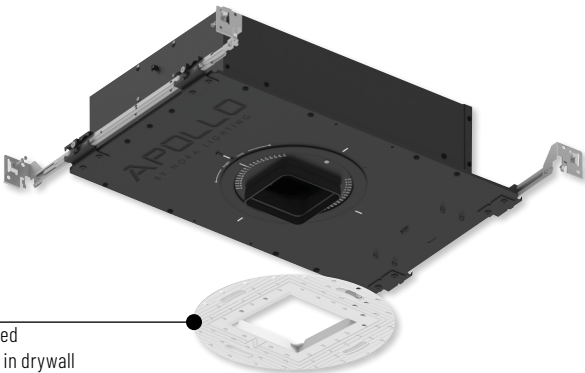
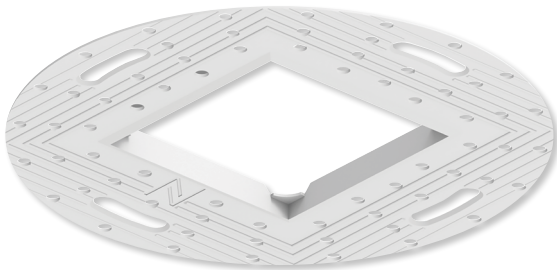
Field changeable extension collar

NAP-3SQSLEEVE Square sleeve shade to shield housing components



Sleeve shade covers housing components

NAP-TLMR-3S Square trimless mud plate for installation in gypsum with plaster.



Trimless mud plate required for flangeless installation in drywall