



# PRODUCT PREVIEW

2<sup>ND</sup> Quarter 2025



Scan for more info.



Visit our  
**Contractor Series  
Webpage**

[www.noralighting.com/contractor](http://www.noralighting.com/contractor)

## Can-less LED Downlights

<b>BULK PACK</b>	12 per box	
<b>SIZE</b>	4"	6"
<b>LUMENS / WATTAGE</b>	850lm / 10W	1050lm / 12W



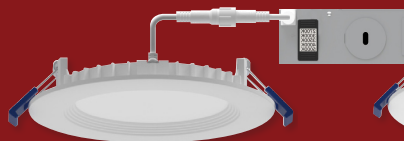
**NCSC-R4D1TWMPW**



**NCSC-R6D1TWMPW**

## Can-less LED Wafer Downlights

<b>BULK PACK</b>	12 per box	
<b>SIZE</b>	4"	6"
<b>LUMENS / WATTAGE</b>	750lm / 10W	1050lm / 13.5W



**NCSC-R4W2TWMPW**



**NCSC-R6W2TWMPW**

## LED Retrofit

<b>BULK PACK</b>	12 per box	
<b>SIZE</b>	4"	6"
<b>LUMENS / WATTAGE</b>	700lm / 10W	950lm / 12W



**NCSR-R41TWMPW**



**NCSR-R61TWMPW**

## Surface Mount

<b>BULK PACK</b>	12 per box	
<b>SIZE</b>	6"	
<b>LUMENS / WATTAGE</b>	1200lm / 16W	



**NCSD-R6TWMPW**  
(Selectable CCT)



**NCSD-R630MPW**  
(Dedicated 3000K)

## LED Backlit Panels

<b>BULK PACK</b>	4 per box	
<b>SIZE</b>	2' x 2'	2' x 4'
<b>LUMENS / WATTAGE</b>	3700lm / 30W	5700lm / 45W



**NCSP-22/334W**



**NCSP-24/334W**





# Large enough to do it right, Small enough to care.

## FAMILY OWNED BUSINESS SINCE 1989

Since our founding in 1989, Nora Lighting has grown from a small importer of lighting fixtures to a designer and manufacturer of quality LED and non-LED residential and commercial lighting. Our long-time customers and reps are familiar with our humble beginnings as a company and for those of you who are newer to Nora, this story is at the core of how we make choices and how we operate and thrive as a business.

Jilla and I fled Iran in 1987 as refugees and started Nora Lighting two years later in a 1,000 ft<sup>2</sup> office with only 4 SKU's. With no lighting background or business network in the US, we earned our customers' trust through honest business practices, exceptional service, and quality products. Our same core values of "Service, Quality, and Value" are still very much true today. Through tireless hard work with our amazing Nora team, we were able to expand our product offering, engineering capabilities, warehousing, and sales network to what it is today. We proudly boast a portfolio of over 40,000 SKUs and have our products stocked in over 300,000 ft<sup>2</sup> of warehouse space across the country.

In 2013, our daughter Neda joined our business to lead it into the second generation. We have supported this next generation of our business with large investments in company infrastructure, inventory, warehousing, and personnel. Our 100% cloud-based ERP system allows us and you to access real-time information from anywhere at any time and has increased our inventory accuracy to over 98% month-over-month. Our newly renovated R&D center is equipped with the latest technology and a UL certified lab. Our product offering, with its quality and pricing is unparalleled in our industry. Our warehouses are filled wall-to-wall with inventory and in 2022 alone, we added two new distribution centers and added two new sales territories to allow us to better serve our customers and reps.

We look forward to welcoming you to our new state-of-the-art showroom and training facility in Los Angeles. To know us is to understand our slogan of "large enough to do it right, small enough to care." We are a proud family-owned and operated business. Doing business with Nora means you come first because family always comes first.

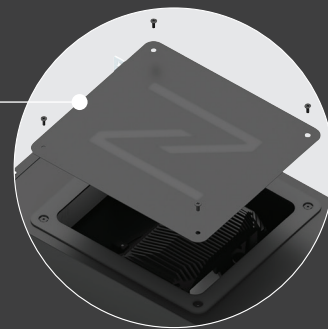
Thank you for trusting us and supporting us over 36 years. We are confident that we have positioned ourselves for many more successful years.

A handwritten signature in black ink, appearing to read "Fred Farzan".

Fred Farzan  
President

## Detachable Roof

Easy maintenance with above ceiling access



10°

12°

15°

26°

38°

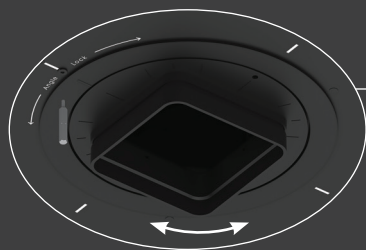
55°

## Field Changeable TIR Optics

26° Spot to 55° Narrow Flood (10° to 15° optics are fixed)

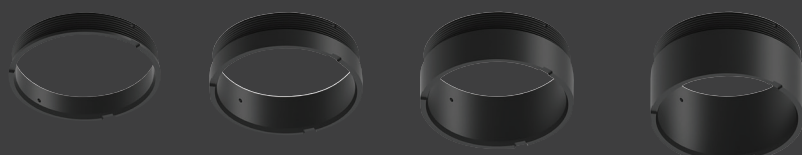


**Precise Aiming & Locking**  
361° Rotation • 45° Tilt



## Perfect Alignment

Fine-tuning screw for aligning square collars. Lock housing in place and install ceiling for symmetric appearance.



0.5" to 0.875"

0.875" to 1.25"

1.25" to 1.625"

1.625" to 2"

## Field Changeable Collars

Accommodates ceiling thickness from 0.5" to 2"



Round Downlight

Square Downlight

Round Pinhole

Square Pinhole

Round Wall Wash

Square Wall Wash

## Die-Cast Aluminum Trims

Architectural Grade Finishes with protective e-coating  
Flanged or Flangeless (Trimless and Wood Ceiling)

### Available Finishes:



Black



Bronze



Haze



Matte  
Powder  
White



Wheat  
Diffused

**Dimmable down to 0.1%**  
Phase, 0-10V, Lutron, DALI, Casambi  
(Serviceable from below the ceiling)

**Extruded Aluminum Heat Sink**  
with COB LED technology  
(Serviceable from below the ceiling)

**Romex Strain Relief**  
Accepts two NM cables



**Reinforced Bar Hangers**  
with two locking positions

**Mud Ring**  
Die-Cast Aluminum with  
Knife Edge Appearance



**APOLLO**

LUMENS: 1000lm to 3000lm  
COLOR TEMPERATURE: Dedicated



Scan for info.



**LUMENS:** 900lm to 5500lm

**COLOR TEMPERATURE:** Dedicated

27K

30K

35K

40K

## SAPPHIRE III

Architectural and Commercial  
COB LED Downlights  
New Construction, Can-less, Remodel

Sapphire III luminaires are a high efficiency, commercial series available in 900 to 5500 lumen packages in 2700K, 3000K, 3500K and 4000K at 90+ CRI. Luminaires utilize the latest COB technology by Signify®, allowing for better optic control offering three beam spreads. Beam spreads focus the light down to the work plane from high ceiling applications. Downlights are available in new construction, remodel and retrofit configurations. Each configuration is cULus listed for wet locations, ENERGY STAR certified and a 5-year limited warranty.



### New Generation

Now delivering up to  
5500 lumens!



NC3-41  
4" Open Reflector



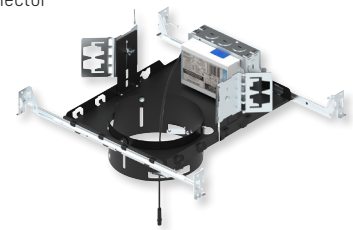
NC3-68  
6" Decorative Glass



NCR3-61  
6" Retrofit Open Reflector



NC3-81  
8" Open Reflector



**Universal Housing**  
has an Adjustable Collar  
for Deep Ceilings

Scan for info.



**LUMENS:** 900lm to 4500lm

**COLOR TEMPERATURE:** Dedicated

27K

30K

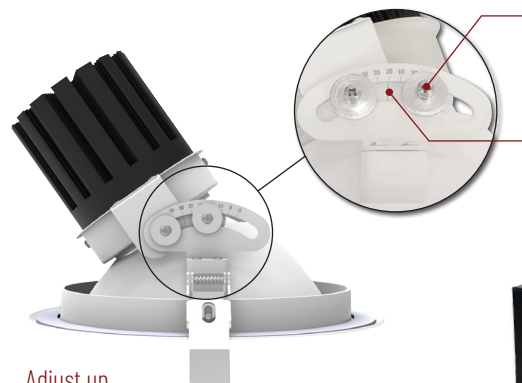
35K

40K

## ADJUSTABLE SAPPHIRE III

4", 6" and 8" LED Downlights  
35° adjustment  
IC and Non-IC New Construction Housing

Adjustable Sapphire commercial reflectors include a bias cut for precise adjustment up to 35°. Utilizing Signify® COB technology, downlights deliver from 900 to 4500 lumens in 2700K, 3000K, 3500K and 4000K at 90+ CRI. Adjustable luminaires are specified in three beam spreads to focus the light to the desired space. The fixtures have dedicated IC and Non-IC housings with 0-10V and Triac dimming, cULus listed, ENERGY STAR certified and a 5-year limited warranty.



### Locking Angle

Tighten screw to lock vertical angle

### Adjustable Mechanism

Precise adjustment keeps light source along axis. Graduation marks for consistency.

Adjust up to 35°

### New Generation

Now delivering up to  
4500 lumens!



NC3-49  
4" Adjustable



NC3-69  
6" Adjustable



NCHA3 / NCHAIC3  
Adjustable Sapphire III  
New Construction Housing



NC3-89  
8" Adjustable







**NRM3-43**  
4" Square



**NRM3-59**  
5" Adjustable  
Regressed Reflector

**New Generation**  
Now delivering up to  
2500 lumens!



**NRM3-62**  
6" Baffle



**NRM3-61**  
6" Retrofit Reflector



**NRM3-6S2**  
6" Sloped Baffle



**NHMIC3**  
New Construction Housing



**NHRM3**  
Remodel Housing



**NHMIC3-926**  
6" Sloped Housing



Scan for info.

**LUMENS:** 900lm to 2500lm  
**COLOR TEMPERATURE:** Dedicated



## MARQUISE III

Light Commercial / High-End Residential  
COB LED Downlights  
New Construction, Remodel, Retrofit

Utilizing the same Signify COB LED and driver packages as the Sapphire III, the Marquise III series features LED packages for light commercial and high-end residential IC and non-IC applications from 900 to 2500 lumens in 2700K, 3000K, 3500K and 4000K. Marquise III is available in 4", 5" and 6" reflector, adjustable, slope ceiling and Retrofit. The Marquise III uses the latest COB technology by Signify®, allowing for better optic control offering three beam spreads. Beam spreads focus the light down to the work plane from high ceiling applications. The Marquise III series is available in new construction, remodel and retrofit configurations.



**Selectable Lumens**  
Three position sliding switch



**Selectable CCT**  
Three position sliding switch  
3000K / 3500K / 4000K



Scan for info.

**LUMENS:** 800lm to 3300lm  
**COLOR TEMPERATURE:** Selectable



## QUARTZ

Architectural and Commercial  
Can-less LED Downlights  
Retrofit old existing CFL & HID frame-ins

Quartz Series features two tunable switches located on the top of the driver unit on each luminaire; Selectable Lumens allows the end user to determine the wattage and Selectable CCT allows for selectable color temperature. Quartz series features LED packages from 800 to 3300 lumens in 3000K, 3500K or 4000K at 90+ CRI. Each downlight comes standard with matte powder white finish, optional snap-in reflectors in haze, specular clear and diffused clear finishes and oversized rings are available. The luminaires require no frame-in or housing, ideal for retrofit, new construction or remodel applications (new construction frame-ins are available). Fixtures are offered with universal input 120V-277V, 0-10V dimming, cETLus listed for wet locations, ENERGY STAR certified, and have a 5-year limited warranty.



**NQZ2-41 (4")**  
**NQZ2-61 (6")**  
**NQZ2-81 (8")**  
Round Downlight

**New Square**  
Now delivering up to  
3300 lumens!



**NQZ2-66 (6")**  
**NQZ2-86 (8")**  
Square Downlight



**NQZ**  
New Construction  
Frame-Ins



**Specular Clear**  
inserts & emergency  
options now available

Scan for info.



**LUMENS:** 400lm or 600lm per head

**COLOR TEMPERATURE:** Dedicated

27K

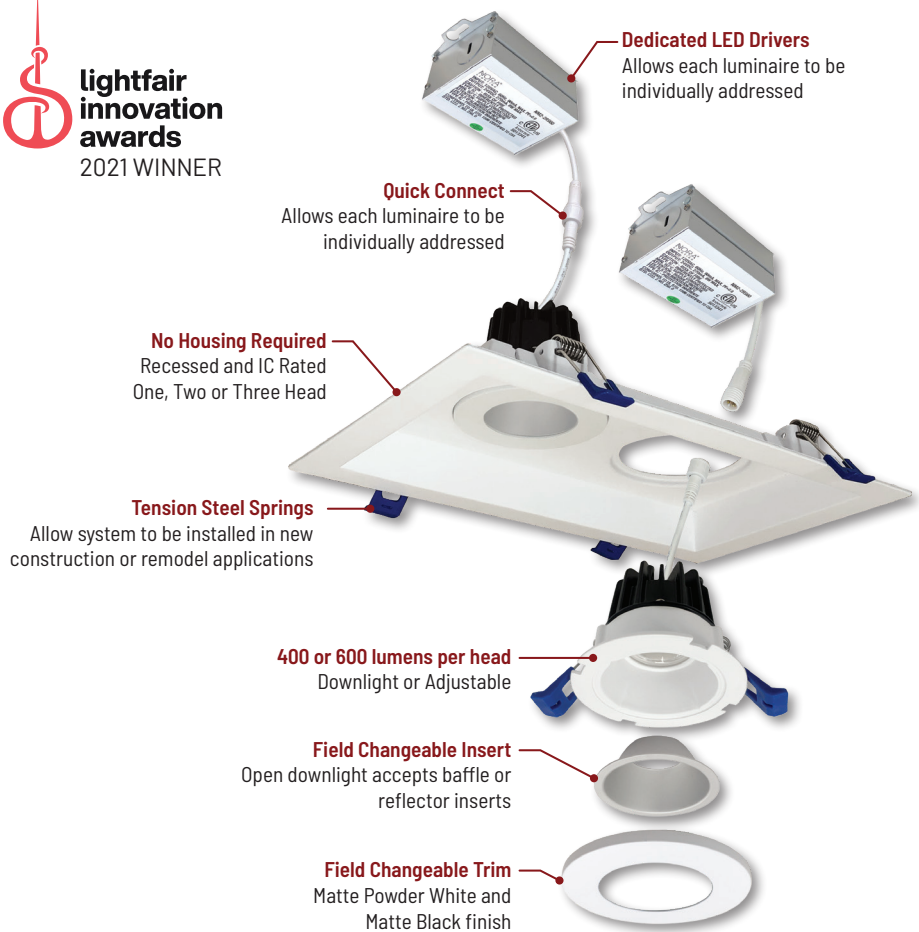
30K

40K

## M2 MULTIPLES

**Modular Multiple Lighting System**  
Customizable with Four Trim Types  
Each luminaire can deliver up to 600 lumens

Our M2 LED luminaires are now available in a Multiple Lighting System (MLS). The modular system requires components be ordered a la carte to create a recessed multiple. Available in **one, two, and three light** linear configurations, the units are completely serviceable from below and require **no housing**. M2 LED luminaires are available in **four round options** in 2700K, 3000K or 4000K and delivering **up to 600 lumens**. Each luminaire can be customized with accessories that include **pinhole trim, wall wash trim or reflector inserts**.



Scan for info.



**LUMENS:** 950lm to 3500lm per head

**COLOR TEMPERATURE:** Dedicated

27K

30K

35K

40K

## FLANGED + TRIMLESS LED MULTIPLES

**LED Dedicated or Medium Base PAR30 Multiple Lighting System**  
One to Three Head Configurations

LED dedicated MLS luminaires allow for adjustable lighting modules and pull-down adjustables in flanged and trimless styles. Offered in **one, two, and three light** linear configurations, the units are completely serviceable from below and can be specified in either **120V or 277V**. MLS can be wired as a single complete unit or as two to three individually controlled or dimmed modules.



### New Generation

Now delivering up to 3500 lumens per head!



**NMRG3-1 & NMRT3-1**  
Flanged MLS

The Flanged MLS LED fixtures produce **900 to 3500 lumen output** in 2700K, 3000K, 3500K or 4000K with specifiable beam spreads. The MLS face plate is regressed to maintain a clean ceiling appearance. Trim finishes are **white/white (shown), white/black, and silver/silver**.



**NMRTL-12 & (2) NMRT-652TL**  
Trimless MLS

Trimless LED adjustable MLS produces **2100lm per gimbal** in 2700K, 3000K, 3500K or 4000K with specifiable beam spreads. The mud plates frame the housing with a clean sharp edge leaving a smooth flangeless appearance that blends in with the ceiling line. Flange kits and medium base version are also available.



**NMRTL-GPD-13**  
Pull Down MLS  
Shown with flange kit.

The Pull-Down units offer the ultimate in flexibility. Each LED module can be left in the housing and adjusted or can be pulled down partially or completely to gain full adjustability in aiming the fixture. Each module produces **2100 lumens at 90+CRI** in 2700K, 3000K, 3500K, or 4000K CCTs options. Available in **white or black finishes, flanged and trimless styles**, the MLS LED Pull-Down can be specified with spot or flood beam spreads.



Scan for info.

**LUMENS:** 1000lm per head  
**COLOR TEMPERATURE:** Dedicated

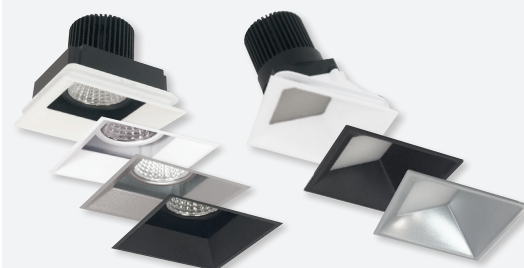


## IOLITE MULTIPLES

1000lm per head  
One to Three Head Configurations  
Customizable with Four Trim Styles

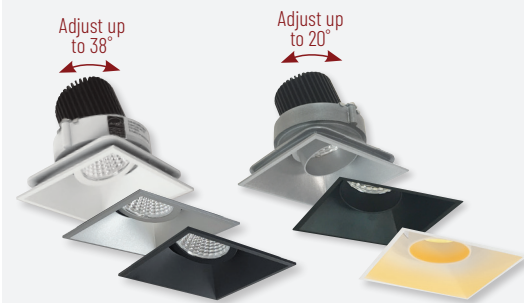
The popular Iolite Downlight Series is available in multiple lighting system configurations. Iolite MLS is customizable in **one, two, and three light** linear configurations with **four different trim types**—downlight, adjustable snoot, adjustable gimbal or wall wash. Trims can be installed with painted flange or trimless clean appearance. The IC rated housing is completely serviceable from below and includes individual **120V-277V Triac/ELV/0-10V drivers for each module**.

Iolite MLS Series LED dedicated units feature COB LED technology. Each individual luminaire produces **over 1000 lumens** in 2700K, 3000K, 3500K, 4000K, 5000K or 800lm with Comfort Dim technology. Trim finishes include **matte powder white, black or haze** and trim options are customizable. Each trim includes three field-adjustable optics, optional premium TIR optics are available. Trims can be re-arranged in the field to desired configuration and adjustment.



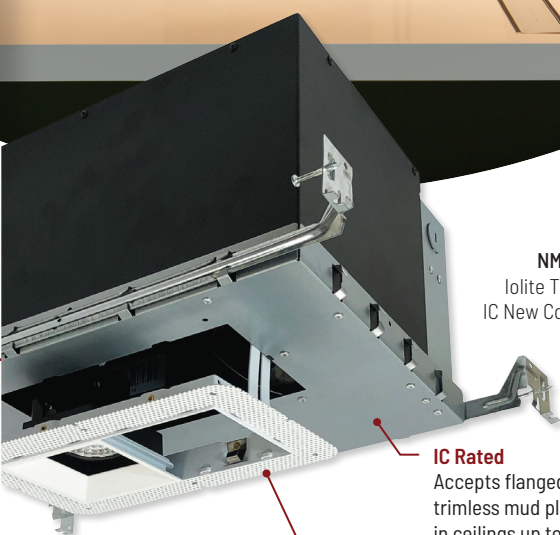
Fixed Downlight

Wall Wash



Adjustable Gimbal

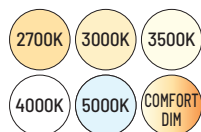
Adjustable Snoot



**NMH10IC-12LE4**  
Iolite Two Head Multiple  
IC New Construction Housing

**IC Rated**  
Accepts flanged and trimless mud plate in ceilings up to 1-1/2"

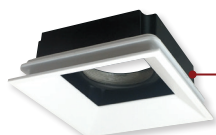
**Flanged or Trimless**  
Painted flange or trimless mud plate in one, two or three heads



**Die-Cast Aluminum Heat Sink**  
with COB LED technology



**Field Changeable Optics**  
Each module includes spot, narrow flood and flood optics



**Four Trim Styles**  
available in Fixed Downlight, Adjustable Snoot, Adjustable Gimbal & Wall Wash in variety of finishes



**NMIOTL-11**  
Trimless One Head



**NMIOT-11**  
Flanged One Head



**NMIOTL-12**  
Trimless Two Head



**NMIOT-12**  
Flanged Two Head



**NMIOTL-13**  
Trimless Three Head



**NMIOT-13**  
Flanged Three Head



Scan for info.



**LUMENS:** 600lm to 2500lm

**COLOR TEMPERATURE:** Dedicated



## IOLITE DEDICATED

1", 2" and 4" LED Downlights  
Dedicated and Retrofit  
800 to 2500 Delivered Lumens

Iolite family is a series of 1", 2", and 4" dedicated and 4" retrofit LED adjustable downlights in square and round apertures. This modular die-cast aluminum system features the patented, easy, no-tool-required replacement of the driver, COB LED technology and one of the largest trim selections in the industry. The reflectors have sharp, clean edges and can be aimed down for general lighting or adjusted to highlight or wall wash a focal point. Each luminaire includes three field adjustable optics and accept optional accessories to customize each application.

Iolite LED modules delivers 600lm (1") or 800-2500lm (2" and 4") in various kelvin temperatures (2700K to 5000K) or Comfort Dim (3100K-2000K). Housings include an IC Air-Tight New Construction, Chicago Plenum, Remodel or 4" Retrofit. Dimming drivers include Lutron EcoSystem®, 0-10V, Triac or ELV and emergency options.



NIOB-1RPH  
1" Fixed Pinhole

NIOB-2SC  
2" Square Adjustable Cone



NIO-4RW  
4" Wall Wash



**New 4" Adjustable Trim**  
NIO-4RSLA  
4" Adjustable Slot

NIO-BLED109  
10° LED Module  
for 2" and 4"



NIO-4RNB  
4" Round Bullnose

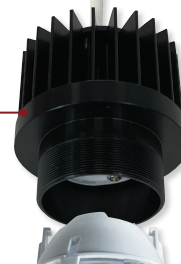


**Dedicated Housing**  
IC Air-Tight Rated

NHIOICD Series  
2" and 4" High Lumen  
New Construction Housings

**ComfortDim**  
Recreate the Sunset with LED  
**New High Lumen Comfort Dim**  
3000K down to 2000K  
Up to 2450 lumens!

**Die-Cast Heat Sink**  
COB LED technology



**Patented Driver Assembly**  
Slide tray allows for tool-less removal of driver.  
**DALI dimming now available!**



**Field Changeable Optics**  
Each module includes spot, narrow flood and flood optics

**Optional Accessories**  
Can be added anytime  
between trim & module



NIO-4SNDC  
4" Round Downlight

10° Optic  
Available





Scan for info.



**LUMENS:** 900lm to 2500lm

**COLOR TEMPERATURE:** Dedicated

27K

30K

35K

40K

50K



## IOLITE TRIMLESS

2" and 4" Round and Square Reflectors  
New 4" Flange accessory for trimless

Iolite Trimless has no exposed trim flange and does not extend below the ceiling plane. This clean and sophisticated look is accomplished by mudding the trimless mud ring to the ceiling, then snapping the trimless reflector into the ring. **Iolite Trimless** is available in 2" and 4" round or square apertures. 4" PLUS series features round and square adjustable and fixed **downlight**. Trimless requires three parts: Iolite Housing, Mud Ring and Reflector. Each trimless delivers from **800 to 2500 lumens** in various kelvin temperatures (2700K to 5000K) or **Comfort Dim** (Warm Dim).

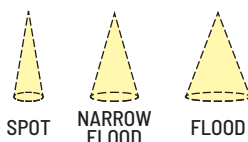


**Dedicated Housing**  
Patented driver assembly allows for tool-less removal

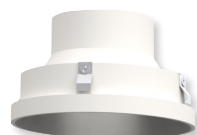
**Mud Ring**  
Round or Square  
Die-Cast Aluminum



**New High Lumen Comfort Dim**  
Die-Cast Heat Sink  
COB LED technology



**Field Changeable Optics**  
Each module includes spot, narrow flood and flood optics



**NIO-2RTL**  
2" Adjustable



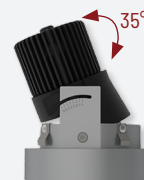
**NIO-4STLND**  
4" Downlight



**NIO-4RTLND / NIO-4RTFA**  
4" Round Downlight with  
Flange Accessory



**NIO-4RTFA**  
4" Trimless Flange  
Accessory



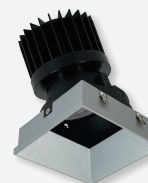
**NIO-4RTSLA**  
4" Round Adjustable Slot



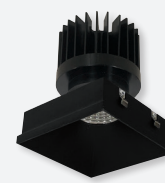
**NIO-4PRTL**  
4" PLUS Adjustable



**NIO-4PRTLND**  
4" PLUS Downlight



**NIO-4PSTLA**  
4" PLUS Adjustable



**NIO-4PSTLND**  
4" PLUS Downlight

Scan for info.



**LUMENS:** 900lm to 1250lm

**COLOR TEMPERATURE:** Dedicated



## IOLITE CAN-LESS

1", 2" & 4" LED Downlights  
No Housing Required!  
Three Field Changeable Optics included

Award winning Iolite small aperture LED downlights are now available without any recessed housings. Simply cut the ceiling, wire the junction box and insert the luminaire in the ceiling cavity. IC Air-Tight rated luminaires are available in round or square apertures in a variety of styles and finishes. Available in three aperture sizes and up to 1250 lumens in dedicated color temperatures. Each LED module includes three field changeable optics to customize each application. Dedicated color temperatures include 2700K, 3000K, 3500K, 4000K or Comfort Dim (warm dimming).



**120V Input**  
Triac or ELV dimming

**Quick Connects**  
Easy installation in  
IC Air-Tight installations



**Dedicated CCT**  
COB LED technology



**Field Changeable Optics**  
Each module includes spot,  
narrow flood and flood optics

**Six Trim Styles**  
Downlight, Adjustable, Bullnose,  
Pinhole, Square & Sloped  
in variety of finishes



**New Sloped Ceiling Trim!**

**NIOC-4RSP**  
4" Sloped Downlight





**New Adjustable Trim!**  
NPR-4RSLA  
4" Adjustable Slot



NPR-4SNDQ  
4" Square Reflector w/  
Square Aperture

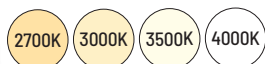


NPR-56RNDQ  
5"/6" Round Reflector



**Medium Base Socket**  
included with each luminaire  
for easy retrofitting

**Integral Driver**  
120V input  
Triac / ELV dimming



**Dedicated CCT**  
COB LED technology



**Field Changeable Optics**  
Each module includes spot,  
narrow flood & flood optics

30°  
Adjustment

**New Adjustable Trims!**  
NPR-4RSLA (4")  
NPR-56RSLA (5"/6")  
Adjustable Slot



Scan for info.

**LUMENS:** 1000lm to 1200lm  
**COLOR TEMPERATURE:** Dedicated



## PEARL RETROFIT

4", 5" & 6" Round and Square Reflectors  
Up to 1200 lumens & fits shallow housings

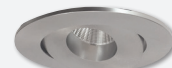
Pearl LED Retrofit luminaires are the high-end, quality solution for easy LED retrofitting in residential and light commercial applications. With a maximum **height of just 4-1/2"**, luminaires can be retrofitted in most 4" IC and non-IC housings—including **shallow!** Available in a beautiful array of fixed and adjustable styles in ten finishes, each Pearl includes three **field changeable optics** for maximum design control. Optional accessories can further customize the fixtures.



NPR-4RC  
4" Adjustable Cone



NPR-4SC  
4" Square Adjustable  
Cone



NPR-4RG  
4" Adjustable Gimbal



NPR-4SG  
4" Square Adjustable  
Gimbal



**WET** NPR-4RNB  
4" Bullnose



**WET** NPR-4SNB  
4" Square Bullnose



**WET** NPR-4RNDQ  
4" Reflector



NPR-4RPH  
NPR-4RPHA  
4" Pinhole



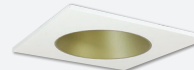
NPR-4RSLA  
4" Adjustable Slot



NPR-4RSL  
4" Adjustable  
Slot Aperture



**WET** NPR-4SNDQ  
4" Square Reflector



**WET** NPR-4SNDQ  
4" Square Reflector w/  
Round Aperture



**WET** NPR-56RNDQ  
5"/6" Reflector



NPR-56RSLA  
5"/6" Adjustable Slot

Scan for info.



**LUMENS:** 1000lm to 1200lm

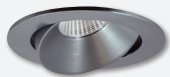
**COLOR TEMPERATURE:** Dedicated



## PEARL LOW VOLTAGE

4", 5" & 6" 12V Round and Square Trims  
Up to 1200 lumens & fits shallow housings

Pearl low voltage LED retrofit luminaires are a high grade solution to replacing old MR16 lamps. A built-in driver converts the 12V voltage into a specification grade downlight with **three field changeable optics** for maximum design control. With a maximum **height of just 4-1/2"**, luminaires can be retrofitted in most 4" IC and non-IC housings—including **shallow**! Available in a beautiful array of fixed and adjustable styles in ten finishes. Optional accessories can further customize the fixtures.



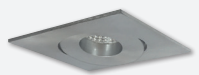
**NPRLV-4RC**  
4" Adjustable Cone



**NPRLV-4SC**  
4" Square Adjustable Cone



**NPRLV-4RG**  
4" Adjustable Gimbal



**NPRLV-4SG**  
4" Square Adjustable Gimbal



**WET** **NPRLV-4RNB**  
4" Bullnose



**WET** **NPRLV-4SNB**  
4" Square Bullnose



**WET** **NPRLV-4RND**  
4" Reflector



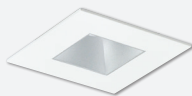
**NPRLV-4RPH**  
**NPRLV-4RPHA**  
4" Pinhole



**NPRLV-4RSLA**  
4" Adjustable Slot



**NPRLV-4RSL**  
4" Adjustable Slot Aperture



**WET** **NPRLV-4SND**  
4" Square Reflector



**WET** **NPRLV-4SND**  
4" Square Reflector w/ Round Aperture



**WET** **NPRLV-56RND**  
5 5/6" Reflector



**NPRLV-56RSLA**  
5 5/6" Adjustable Slot



**NPRLV-4SG**  
4" Square Adjustable Gimbal



**NPRLV-56RND**  
5 5/6" Round Reflector



**GU5.3 Socket Adapter**  
hardwired to each luminaire for easy retrofitting in low voltage housings

**Integral Driver**  
Triac / ELV dimming

**Die-Cast Aluminum Heat Sink**  
with COB LED technology



**Field Changeable Optics**  
Each module includes spot, narrow flood and flood optics



**Optional Accessories**  
can be added anytime between trim and LED module

30° Adjustment



**New Adjustable Trims!**

**NPRLV-4RSLA (4")**  
**NPRLV-56RSLA (5 5/6")**  
Adjustable Slot





Scan for info.



**LUMENS:** 800lm

**COLOR TEMPERATURE:** Selectable

27K

30K

35K

40K

50K

## ONYX LOW VOLTAGE

### 4" 12V Low Voltage Retrofit Selectable CCT (27K/30K/35K/40K/50K) Reflector & Baffle Trims

Onyx Low Voltage Retrofit Series is an economical and quality luminaire compatible with existing, new construction or remodel low voltage housings. 4" downlights produce over 800 lumens and include a Selectable CCT switch to **select the color temperature from 2700K / 3000K / 3500K / 4000K / 5000K**. An integrated driver converts the voltage from 12V and dimmable with compatible Triac or ELV dimmers



#### Selectable CCT

Five position sliding switch  
27K / 30K / 35K / 40K / 50K

#### GU5.3 Socket Adapter

Easy retrofit in  
low voltage housings

#### Integral Driver

Triac / ELV dimming

#### Trim Types

Reflector or Baffle  
White finish



NOXLV-4R1  
4" Reflector



NOXLV-4R2  
4" Baffle

Scan for info.



**LUMENS:** 650lm to 1300lm

**COLOR TEMPERATURE:** Selectable

27K

30K

35K

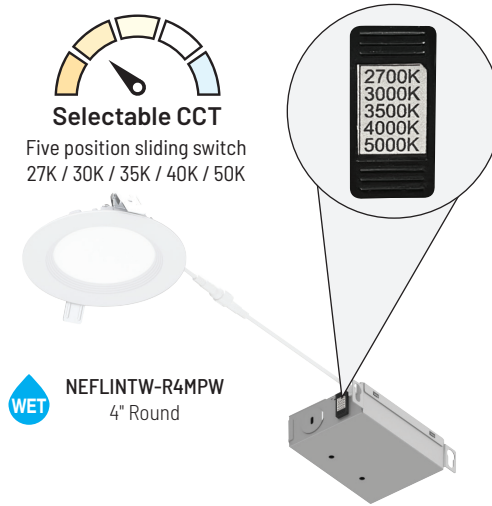
40K

50K

## FLIN

### 4" and 6" Can-less Wafer Downlights Round or Square Aperture Selectable CCT (27K/30K/35K/40K/50K)

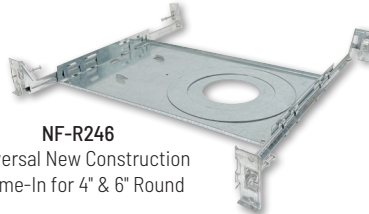
FLIN thin regressed downlights offer **quick, economical recessed IC Air-Tight LED lighting** for remodel or new construction applications. Simply cut the hole, wire the junction box, and insert FLIN using the spring coiled pressure clips which secure it tightly to the ceiling. **No housing is required!** FLIN is now available in **120-277V input** and produces up to **1300 lumens** with a **Selectable CCT switch (27K/30K/35K/40K/50K)**. The regressed lens with sharp baffle cuts reduces aperture brightness. FLIN series requires **less than 2"** ceiling clearance. A new construction frame-in plate and oversize ring available.



**NEFLINTW-R4MPW**  
4" Round



**NFP-S245 / NFP-S625**  
Universal New Construction Plates



**NF-R246**  
Universal New Construction  
Frame-In for 4" & 6" Round



**NEFLINTW-S6MPW**  
6" Square



Scan for info.



**LUMENS:** 800lm or 1100lm

**COLOR TEMPERATURE:** Selectable

27K

30K

35K

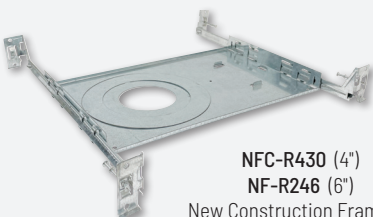
40K

50K

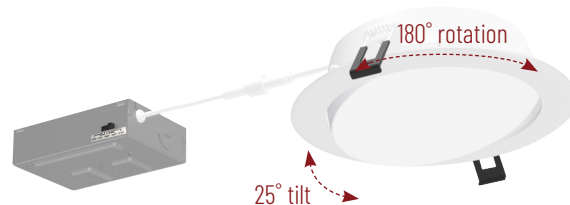
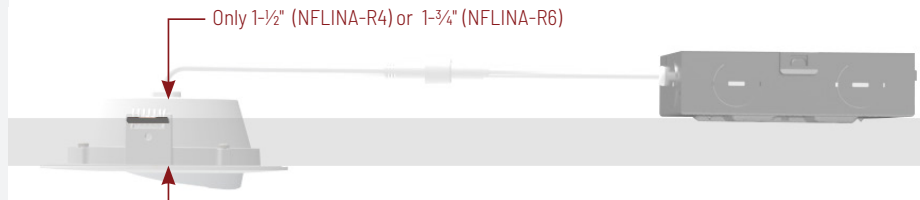
## FLIN ADJUSTABLE

### 4" and 6" Can-less Wafer Downlights 25° Adjustment & 180° Rotation Selectable CCT (27K/30K/35K/40K/50K)

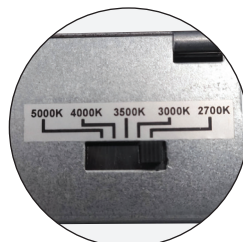
FLIN Adjustable can-less downlights **adjust up to 25°** with the same appearance as FLAT downlights. IC Air-Tight rated luminaires require **no housing** and **rated for wet locations**. Delivering up to **1100 lumens** with a **Selectable CCT switch (2700K / 3000K / 3500K / 4000K / 5000K)** switch built-in to the remote junction box.



**NF-R430 (4")**  
**NF-R246 (6")**  
New Construction Frame-In



**NFLINA-R6TWMPW**  
6" FLIN Adjustable



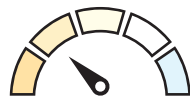
**Selectable CCT**  
Five position sliding switch  
27K / 30K / 35K / 40K / 50K



**NFLINA-R4TWMPW**  
4" FLIN Adjustable





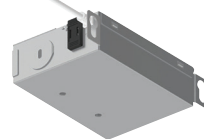


### Selectable CCT

Five position sliding switch  
27K / 30K / 35K / 40K / 50K



1/2" depth



Scan for info.



**LUMENS:** 700lm or 1050lm

**COLOR TEMPERATURE:** Selectable



## FLAT

4" and 6" Can-less Wafer Downlights  
Dead Front Trim (Non-Metallic)  
Selectable CCT (27K/30K/35K/40K/50K)

FLAT wafer can-less downlights feature a **non-metallic trim** for corrosive environments. IC Air-Tight rated luminaires are similar to our existing FLIN series, where **no housing is required** and **only 1/2" height**. Delivering up to **1050 lumens** with a **Selectable CCT** switch (2700K / 3000K / 3500K / 4000K / 5000K) switch built-in to the remote junction box.



NF-R246

Universal New Construction  
Frame-In

### New 0-10V Option

120-277V input  
0-10V dimming



NLTH-41TW-MPWLE4  
4" Theia



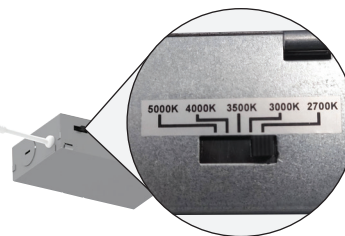
### Selectable CCT

Five position sliding switch  
27K / 30K / 35K / 40K / 50K



### New Haze Finish!

NLTH-61TW-HZMPW  
6" Theia



NLTH-81TW-MPW  
8" Theia

Scan for info.



**LUMENS:** 950lm to 2100lm

**COLOR TEMPERATURE:** Selectable



## THEIA

4", 6" & 8" Can-less Downlights  
with Deep Reflector  
Selectable CCT (27K/30K/35K/40K/50K)

Commercial grade downlights without any frame-in or housing required. Each luminaire includes a dedicated junction box with **integral CCT switch**. 4" (950lm), 6" (1400lm) and 8" (2100lm) downlights are IC air-tight rated, include **five color temperatures** (27K / 30K / 35K / 40K / 50K) and dimmable with compatible phase or 0-10V dimmers. Wet location rated luminaires are ideal for variety of applications indoor or outdoor.



NEPK-20LEDUNV  
20W Emergency LED Driver



Scan for info.



**LUMENS:** 750lm or 1250lm

**COLOR TEMPERATURE:** Dedicated

27K

30K

## M-WAVE

Adjustable Can-less Downlights

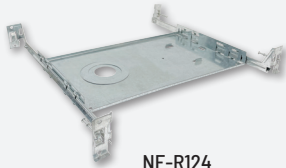
90° Tilt & 350° Rotation

Dedicated CCT (2700K or 3000K)

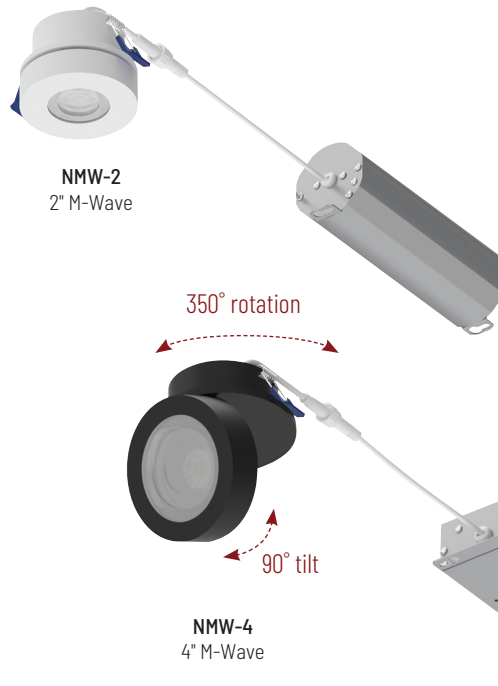
M-Wave can-less luminaires offer the most versatility for aiming without any housing needed! IC Air-Tight rated luminaires extend up to **90° from surface and rotate 350°**, illuminating any direction needed. M-Wave downlights appear as puck lights, up to 1-3/8" off the surface when flush and delivering over 1250 lumens in dedicated CCT (2700K or 3000K).



**NMWA-OPT**  
Field Changeable  
Optics

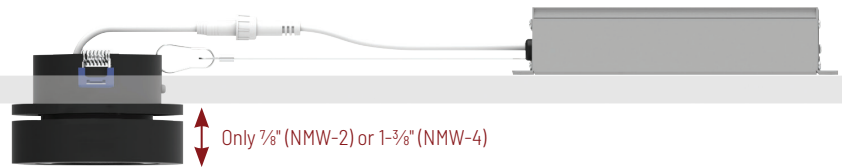


**NF-R124**  
Universal New Construction  
Frame-In for 4"



**NMW-2**  
2" M-Wave

**NMW-4**  
4" M-Wave



Only 7/8" (NMW-2) or 1-3/8" (NMW-4)

Scan for info.



**LUMENS:** 900lm or 1300lm

**COLOR TEMPERATURE:** Selectable

27K

30K

35K

40K

50K

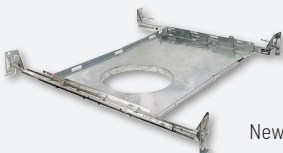
## M-CURVE

Adjustable Can-less Downlights

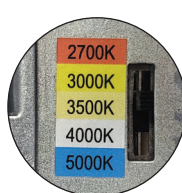
Extends up to 80° & 360° Rotation

Selectable CCT (27K/30K/35K/40K/50K)

M-Curve can-less adjustable downlights are a unique and functional. Extending 80° while never exposing the ceiling aperture. IC Air-Tight rated luminaires extend up to **80° and rotate 360°**, illuminating any direction needed. Delivering up to 1300 lumens with a Selectable CCT (2700K / 3000K / 3500K / 4000K / 5000K) switch built-in to the remote junction box.



**NF-R375 (4")**  
**NFC-R5 (6")**  
New Construction Frame-In



**Selectable CCT**

Five position sliding switch  
27K / 30K / 35K / 40K / 50K



**NMC-6RTWMPW**  
6" M-Curve

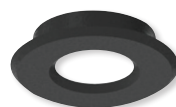
**NMC-4RTWMPW**  
4" M-Curve







**M1-170**  
M1 Module and 4 Plastic Trims



**NM1-RSS**  
Round Stainless Steel



**NM1-SSS**  
Square Stainless Steel



**NM1-RAEYELID**  
Round Scoop



**NM1-RL0UV**  
Round Louver



**NM1-RAIHEC**  
Round Hex Louver



**NM1-RSSD**  
Round Stainless Steel Indicator



**LUMENS:** 100lm  
**COLOR TEMPERATURE:** Dedicated



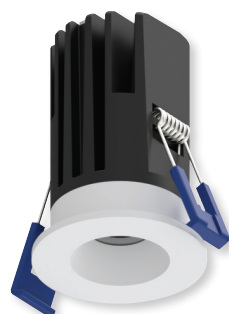
## M1

**1" 12V Can-less Downlights**  
**No housing required • IC rated**  
**Field Changeable Trims & Optics**

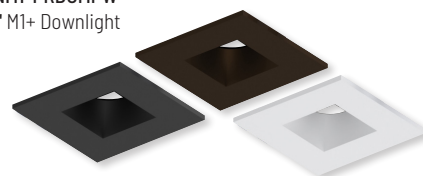
M1 miniature 1" recessed downlights features quality and convenience with easy installation for indoor and outdoor applications. LED luminaires **include four plastic downlight trims**, four optics and 6" quick connect for **12V driver**. **No housing is required** and can be installed in insulated ceilings. Field changeable optics and trims allow for each installation to be customized per application. LED luminaires delivers **100 lumens** and available in **2700K or 3000K** at 90+ CRI and requires a 12V dimmable driver. New construction rough-in plate available.



**NM1-PRDC & NM1-PSDT**  
1" M1+ w/ Square Trim



**NM1-PRDCMPW**  
1" M1+ Downlight



**NM1-PSDT**  
Square Trim



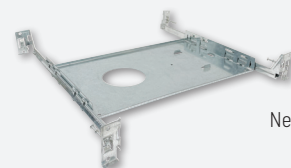
**LUMENS:** 600lm  
**COLOR TEMPERATURE:** Dedicated



## M1+

**1" 120V Can-less Downlights**  
**No housing required • IC Air-Tight**  
**600lm / 9W • Square Trim Accessory**

M1+ is an upgrade to our first generation M1 1" downlights. From 12V input to 120V input with Triac or ELV dimming. From 100 lumens to 600 delivered lumens. Die-cast trims come standard in round matte black or matte powder white finishes. Luminaires include a pre-wired junction box, no housing is required. IC Air-Tight rated luminaires are simple to install.



**NF-R2**  
New Construction Frame-In



Scan for info.



**LUMENS:** 400lm to 900lm  
**COLOR TEMPERATURE:** Dedicated



## M2

### 2" 120V Can-less Downlights No housing required • IC Air-Tight Trimless and Flanged Options

M2 recessed downlights do not require a housing, which makes installation easy. Simply cut the ceiling, wire the junction box and insert the luminaire in the ceiling cavity. IC rated luminaires are available in **round or square** trims in a variety of styles including downlight, shower, adjustable gimbal, elbow, pinhole, wall wash and baffle and are customizable with accessories. Delivering over **900 lumens** in **2700K, 3000K or 4000K** at **90+ CRI**. New construction frame-in and extension cables are available.



**NM2-2RDC**  
Round Downlight



**NM2-2RDCS**  
Lensed Downlight



**NM2-2RDC**  
Round Downlight



**NM2-2RG**  
Round Gimbal



**NM2-2SDC**  
Square Downlight



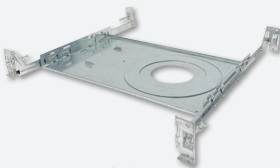
**NM2-2SB**  
Square Baffle



**MLS Multiple Plate**  
Accessories



**Square Trim**  
Accessories



**NF-R246**  
Universal New Construction  
Frame-In



**Baffle & Reflector**  
Inserts



**Mud Plate**  
Installs against drywall  
without any housing

**120V Input**  
Triac or ELV dimming

**Quick Connects**  
Easy installation in  
IC Air-Tight installations

**Patent Pending**  
Steel plates hold trimless against  
magnet inside mud plate

**Dedicated CCT**  
2700K, 3000K or 4000K\*  
\* Select trims



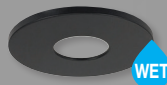
**NM2-2RTLDC**  
Trimless Downlight



**Trimmed appearance**  
available in matte black and  
matte powder white



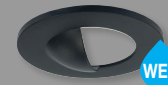
**Knife edge trimless appearance**  
with no exposed flange



**NM2-RPH**  
Pinhole Trim



**NM2-2RDCS**  
Lensed Downlight



**NM2-RW**  
Wall Wash Trim



**WET** NM4-RG  
4" Adjustable Gimbal



**WET** NM4-RDC  
4" Downlight



**WET** NM4-RDC & NM4-SDT  
Downlight w/ Square Trim



NM4-R470  
4" Adjustable Elbow



NM4-R470 & NM4-SET  
Elbow w/ Square Trim



Scan for info.

**LUMENS:** 950lm to 1150lm  
**COLOR TEMPERATURE:** Dedicated

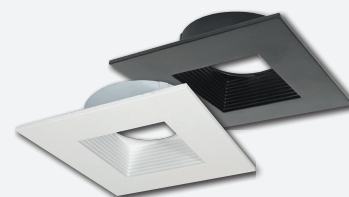
27K

30K

## M4

4" 120V Can-less Downlights  
No housing required • IC Air-Tight  
Adjustable, Elbow and Downlight Options

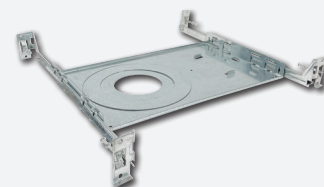
M4 4" recessed downlights resemble other can-less downlights (M1 and M2). Luminaires include a pre-wired junction box, no housing is required. IC Air-Tight rated luminaires are simple to install with round or square trims in a variety of styles including downlight, adjustable gimbal or elbow. Delivering up to 1150 lumens in 2700K or 3000K at 90+ CRI. New construction frame-ins and extension cables are available.



NM4-SET  
Square Baffle Trim for NM4-RDC



NM4-SET  
Square Trim for NM4-R470



NF-R246 (NM4-RG & NM4-R470)  
NFC-R375 (NM4-RDC)  
New Construction Frame-In





Scan for info.



**LUMENS:** 1200lm to 1700lm

**COLOR TEMPERATURE:** Selectable

27K

30K

35K

40K

50K

## FIRE RATED CAN-LESS

2-Hour Fire Listing to UL 263 & ASTM E119  
4" and 6" Flat and Baffle Downlights  
Selectable CCT (27K/30K/35K/40K/50K)

Fire rated can-less downlights are tested and listed to UL 263, ASTM E119 & CAN/ULC S101 two-hour fire rating. Wafer design allows luminaires to be installed in shallow plenums and include a selectable five color temperature switch. Multi-piece construction provides an extra layer of protection to prevent the spread of fire above the ceiling within a two-hour rating.



 **NFRC-R4WITWMPW**  
4" Flat Downlight

 **NFRC-R6WITWMPW**  
6" Flat Downlight





 **NFRC-R6W2TWMPW**  
6" Baffle Downlight

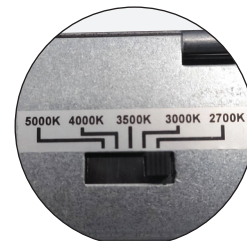


 **NFRC-R4W2TWMPW**  
4" Baffle Downlight



**Selectable CCT**

Five position sliding switch  
27K / 30K / 35K / 40K / 50K



Scan for info.



Patent Pending

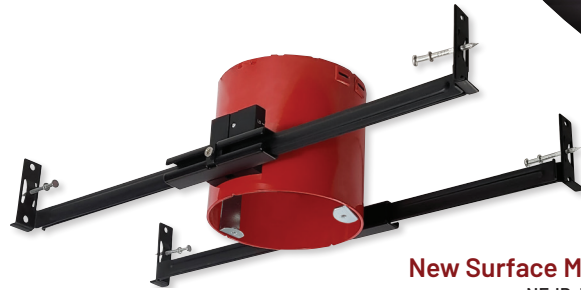
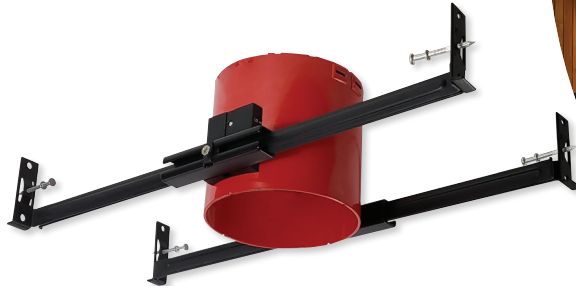
## 4" JUNCTION BOX

IC Air-Tight Recessed Housing  
(Compatible with 4" AC Onyx, Pearl, Slim  
and Cobalt Click w/ Selectable CCT)

Dedicated new construction housing for use in insulated ceilings can be in direct contact with insulation. Powder coated steel housing meets 2 hour fire rating per international building code section 714 for 1-hour and 2-hour fire rated assemblies. Air-tight construction provides energy savings by reducing the flow of air through the ceiling. The housing is labeled for use with LED downlights or as an outlet box.

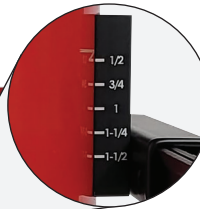


NFJB-R4  
4" Junction Box for fire rated assembly



New Surface Mount Version  
NFJB-R4S  
with pre-installed brackets

Ceiling Thickness  
Accommodates 1/2" to 1-1/2" ceilings



Only 4" Height  
for shallow ceiling  
plenums, under 3-1/2"  
when used in 1/2" ceiling

Adjustable Bar Hangers  
extend up to 25-5/8" with  
captive nails and alignment foot

Alignment Notch  
for use with laser level

## COMPATIBLE LUMINAIRES

### Cobalt Click

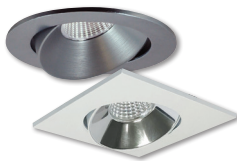


NLCBC2-451TW  
Cobalt Click Reflector  
w/ Selectable CCT



NLCBC2-452TW  
Cobalt Click Reflector  
w/ Selectable CCT

### Pearl Retrofit



NPR-4RC / NPR-4SC  
Pearl Adjustable Cone



NPR-4RG / NPR-4SG  
Pearl Adjustable Gimbal



NPR-4RNB / NPR-4SNB  
Pearl Bullnose

### AC Onyx



NOXAC-431TWWW  
AC Onyx Reflector



NOXAC-432TWWW  
AC Onyx Baffle



NOXAC-4RGTWWW  
AC Onyx Adjustable



NOXAC-4RWTWWW  
AC Onyx Round Wall Wash



NOXAC-4SWTWWW  
AC Onyx Square Wall Wash

### Slim Downlights



NSLIM-4RL1TWMPW  
Slim Surface Mount



NSLIM-4REGL1TWMPW  
Regressed Slim  
Surface Mount





**Surface Mount**  
over 4" octagonal junction box



**WET** NSLIM-4RL1TWMPW  
4" Slim Surface Mount

**Retrofit Kit included**  
for 4" recessed housings



**Selectable CCT**  
Five position switch  
27K / 30K / 35K / 40K / 50K

Scan for info.



**LUMENS: 800lm**

**COLOR TEMPERATURE: Selectable**



## SLIM

LED Surface Mount / Retrofit  
Optional Decorative Trim Rings  
Selectable CCT (27K/30K/35K/40K/50K)

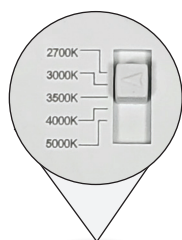
Slim LED surface mount luminaires easily install over 4" octagonal junction boxes. Alternatively an optional retrofit kit is also included to install over 4" recessed housings. Luminaires produce over 800 lumens and include a selectable CCT switch to change the color temperature from 2700K / 3000K / 3500K / 4000K / 5000K.



NSLIM-4RDTB  
Black Ring



NSLIM-4RDTS  
Silver Ring



**Selectable CCT**  
Five position switch  
27K / 30K / 35K / 40K / 50K



**WET** **New Regressed Slim**  
NSLIM-4RLEG1TWMPW  
4" Surface Mount

Scan for info.



**LUMENS: 950lm**

**COLOR TEMPERATURE: Selectable**



## REGRESSED SLIM

LED Surface Mount  
Selectable CCT (27K/30K/35K/40K/50K)

Ultra slim regressed LED surface mount luminaires easily install over 4" octagonal junction boxes. Regressed light source gives the appearance of a recessed luminaire while producing 950 lumens. Selectable CCT switch to change the color temperature from 2700K / 3000K / 3500K / 4000K / 5000K.



Scan for info.



**LUMENS:** 750lm to 1150lm

**COLOR TEMPERATURE:**

Dedicated or Selectable

27K

30K

35K

40K

50K

## AC ONYX DOWNLIGHTS

### 4", 5" and 6" Retrofit Downlights Round or Square Aperture Dedicated or Selectable CCT

OnyxLED retrofit downlights feature designer trim types (baffle, reflector and square) with simple installation and quality. Options include **dedicated or selectable color temperature** and trim inserts to change finish or trim type. Die-cast aluminum construction provides clean sharp edges and is suitable for use with most 4", 5" and 6" recessed housings.



**NOXAC-431** (Dedicated CCT)  
**NOXAC-431TW** (Selectable CCT)  
4" Reflector



**NOXAC-432** (Dedicated CCT)  
**NOXAC-432TW** (Selectable CCT)  
4" Baffle



**NOXAC-5631** (Dedicated CCT)  
**NOXAC-5631TW** (Selectable CCT)  
5"/6" Reflector



**NOXAC-5632** (Dedicated CCT)  
**NOXAC-5632TW** (Selectable CCT)  
5"/6" Baffle



**NOXAC-436**  
4" Square (Dedicated CCT)



**NOXAC-636**  
6" Square (Dedicated CCT)



**NOXAC-5631TWBB**  
5"/6" Reflector



**Selectable CCT**

Five position sliding switch  
27K / 30K / 35K / 40K / 50K

**Now Available in  
Dedicated CCT  
or Selectable CCT!**



**NOXAC-431 / NOX-4EYELIDW**  
4" Reflector with White Eyelid

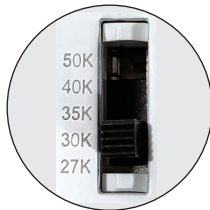


**NOXAC-432 / NOX-40R-W**  
4" Baffle with Oversize Ring



**NOXAC-436**  
4" Square





#### Selectable CCT

Five position sliding switch  
27K / 30K / 35K / 40K / 50K



**NOXAC-4RGTW**  
4" Adjustable  
800lm

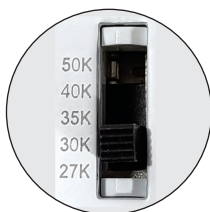


**NOXAC-56RGTW**  
5 1/8" Adjustable  
1050lm



#### Selectable CCT

Five position sliding switch  
27K / 30K / 35K / 40K / 50K



**NOXAC-4RWTW**  
4" Round Wall Wash



**NOXAC-4SWTW**  
4" Square Wall Wash



Scan for info.



**LUMENS:** 800lm or 1050lm

**COLOR TEMPERATURE:** Selectable



## AC ONYX ADJUSTABLE

4", 5" and 6" Retrofit Downlights  
Selectable CCT (27K/30K/35K/40K/50K)  
Compatible with Shallow Housings

AC Onyx adjustable LED retrofit downlights **requires no driver**, compatible with almost all recessed housings. Luminaires tilt up to **40° tilt** and **360° rotation**. An integrated **selectable CCT switch** changes the **color temperature** (27K / 30K / 35K / 40K / 50K) and dimmable with compatible Triac or ELV dimmers.



Scan for info.



**LUMENS:** 700lm or 800lm

**COLOR TEMPERATURE:** Selectable



## AC ONYX WALL WASH

4" Wall Wash Retrofit  
Round or Square Aperture  
Selectable CCT (27K/30K/35K/40K/50K)

AC Onyx wall wash LED retrofits **requires no driver**, compatible with most recessed housings, including shallow housings. **Wet location rated** luminaires include an integrated **selectable CCT switch** to change the **color temperature** (27K / 30K / 35K / 40K / 50K) and dimmable with compatible Triac or ELV dimmers.



Scan for info.



**LUMENS:** 750lm to 1000lm

**COLOR TEMPERATURE:**

Dedicated or Selectable



## COBALT CLICK RETROFIT

### 4", 5" and 6" Retrofit Downlights Specification Options(0-10V & Emergency)

4", 5" and 6" Cobalt Click LED retrofits deliver **up to 1000 lumen output** and now available in **Dedicated CCT or Selectable CCT**. Cobalt series integrates the latest from the Signify® COB family of LED arrays, giving bright spectacular light output and low power consumption. The deep set lens provides excellent visual comfort, while the UTM design allows the luminaires to be used in shallow housings. The Cobalt Click Series is available in square or round apertures, 0-10V dimming, emergency back-up and 277V input.



### New Comfort Dim

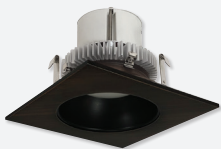
3000K down to 2000K  
900 lumens!



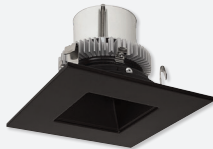
**WET** NLCBC2-451  
Round Reflector



**WET** NLCBC2-452  
Round Baffle



**WET** NLCBC2-453  
Square Reflector  
w/ Round Aperture



**WET** NLCBC2-456  
Square Reflector  
w/ Square Aperture



**WET** NLCBC2-455  
Square Pinhole  
(Available in 4" only)



NLCBC2-453  
4" Square w/  
Round Aperture



### Selectable CCT

Five position sliding switch  
27K / 30K / 35K / 40K / 50K

**Now Available in  
Dedicated CCT  
or Selectable CCT!**



NLCBC2-651  
6" Reflector



NLCBC2-552  
5" Baffle



NLCBC2-651  
6" Round



**Medium Base Socket**  
included with each  
luminaire for easy  
retrofitting

Patent Nos. D824,568S; D797977S; D871,644S





Patent Nos. D824,568S; D797977S; D871,644S



**WET** NLCB2-651  
6" Reflector



**New Comfort Dim**  
Warm Dim  
(3000K-2000K)



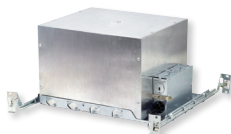
**WET** NLCB2-652  
6" Baffle



**WET** NLCB2-653  
6" Square with Round Aperture



**WET** NLCB2-656  
6" Square Reflector



**NHICCB-6**  
IC New Construction



**NHRCB-6**  
Non-IC Remodel



**NHCB-6**  
Non-IC New Construction



Scan for info.

**LUMENS:** 1500lm or 2000lm  
**COLOR TEMPERATURE:** Dedicated



## COBALT HIGH LUMEN

**6" Dedicated Downlights**  
Dedicated CCT and Comfort Dim (Warm Dim)  
IC, Emergency and 0-10V dimming options

The **6" Cobalt High Lumen** provides the same look and color consistency as the popular Cobalt Click downlights using a Signify COB, but producing an incredible **2000+ or 1500 lumens at 90+ CRI**. The series is offered in a wide variety of click-on trims, including square and round apertures in eight finishes. The Cobalt HL is a **dedicated unit, not retrofit**, that requires a Nora new construction or remodel non-IC housing. Available in 120V/277V, 0-10V dimming and emergency configuration, the Cobalt HL works seamlessly with our Cobalt, Cobalt Click, and Cobalt Shallow families providing a color-consistent and aesthetically identical package.



Scan for info.

**LUMENS:** 1000lm or 1200lm  
**COLOR TEMPERATURE:** Dedicated



## COBALT ADJUSTABLE RETROFIT

**4", 5" and 6" Retrofits**  
30° Adjustment / 358° Rotation  
Specification Options (0-10V & Emergency)

4", 5" and 6" Cobalt Adjustable Retrofit features a patented design that rotates and adjusts while never exposing an opening or breaking the ceiling plane. The glide mechanism allows for total aiming flexibility while producing up to **1200 lumens at 90+ CRI**. An excellent solution for slope ceilings, luminaires include **field-changeable optics** for spot, narrow flood and flood beam spreads and **optional TIR premium reflectors** available. Choose from six different finishes that matches the complete family of Cobalt downlights.



Patent No. D917,090S

**Integral Driver**  
Triac / ELV dimming

**Medium Base Socket**  
included with each luminaire for easy retrofitting



**Field Changeable Optics**  
Each retrofit includes spot, narrow flood & flood optics



**COB LED technology**  
2700K, 3000K, 3500K or 4000K

**Frosted Lens**  
comes pre-installed and additional semi-frosted lens included

Adjusts  
up to 30°



**NLCBC-469**  
4" Adjustable



**NLCBC-569**  
5" Adjustable



Rotates 358°  
**NLCBC-669**  
6" Adjustable

Scan for info.



**LUMENS:** 850lm to 1250lm

**COLOR TEMPERATURE:** Dedicated

27K

30K

35K

40K

## COBALT SHALLOW

4" Shallow IC Air-Tight Housing  
2-5/8" Height & Delivering 1250 lumens  
Phase or 0-10V dimming options

Cobalt Shallow Series allows for installation in over crowded plenums in multi-family or shallow ceiling constructions at **only 2-5/8" height**. The **patented design** allows for access to the driver from below the ceiling. The finished look and deep set optics performs and looks like a standard deep regressed downlight. Available in **850 and 1250 lumens at 90+ CRI** utilizing Cree COB technology, the Cobalt Shallow is the shallowest housing and LED module combination on the market. Choose from eleven different finishes that matches the complete family of Cobalt downlights.



Patent Nos. D877,390S; D824,568S; D797977S; D871,644S

Only 2-5/8" height!



NHSIC-4  
4" Shallow Housing



NLCBS-456  
4" Square Reflector



NLCBS-4W51  
4" Round Reflector

Scan for info.



**LUMENS:** 800lm

**COLOR TEMPERATURE:** Dedicated

27K

30K

35K

40K

## COBALT ELBOW RETROFIT

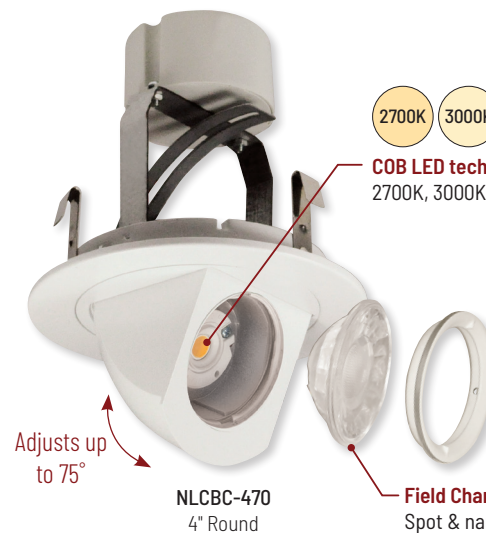
4" Round or Square Retrofit  
75° Tilt / 358° Rotation  
Field Changeable Optics

One of the most flexible lighting tools on the market, the Cobalt Adjustable Elbow retrofit **rotates 358 degrees** horizontally and **adjusts 75 degrees** vertically. Available in round or square and multiple finishes, the Elbow produces **800 lumens at 90+ CRI** in various CCTs. Each Elbow **includes two field-changeable optics** for spot and narrow flood beam spreads. Retrofit luminaires are compatible with most 4" new construction and remodel housings and can be specified with **remote emergency options**.



2700K 3000K 3500K 4000K

**COB LED technology**  
2700K, 3000K, 3500K or 4000K



NLCBC-470  
4" Round

**Field Changeable Optics**  
Spot & narrow flood optics included



NLCBC-4870  
4" Square





### Selectable CCT

Five position sliding switch  
27K / 30K / 35K / 40K / 50K



**NLRS-611**  
6" LED Reflector  
Selectable CCT



**NLRS-612**  
6" LED Baffle  
Selectable CCT



**NTM-615**  
6" Metal Baffle



**NTP-614**  
6" Plastic Baffle



**NHIC-926DWQAT**  
6" Double Wall  
Medium Base Housing



**NHIC-926QAT**  
6" Medium Base Housing



**NHIC-926QAT**  
6" Medium Base Remodel

**NHIC-926LMRAT**  
6" LED Dedicated Housing

**NHIC-926LMRAT**  
6" LED Dedicated Remodel



Scan for info.

**LUMENS:** 1200lm

**COLOR TEMPERATURE:** Selectable



## SLOPED CEILING

6" LED Retrofits, Trims and Housings  
Reflector and Baffle Trims  
Ceiling pitches from 2/12 to 6/12

Retrofit existing sloped housings with **LED retrofit downlights** that deliver up to **1200 lumens** with **two trim options** and a **selectable color temperature** switch. IC Air-tight sloped ceiling housings are also available in new construction or remodel options that can be adjusted for 2/12 (10°) to 6/12 (26.5°) ceiling pitches. Housings can be specified with a medium base socket or quick connect for LED luminaires. Sloped LED luminaires include a retrofit adapter for new and existing medium base housings.



Scan for info.

**LUMENS:** 1200lm

**COLOR TEMPERATURE:** Dedicated



## SUPER SLOPED CEILING

6" LED Retrofits, Trims and Housings  
Reflector and Baffle Trims  
Ceiling pitches from 7/12 to 12/12

Super sloped ceilings' pitches range from 7/12 (30°) to 12/12 (45°) and require a housing with greater angle. Variety of IC air-tight sloped ceiling housings are available with a medium base socket or dedicated for LED luminaires only. Super sloped LED luminaires include a retrofit adapter for new and existing medium base housings. LED luminaires also have dedicated CCT options in 2700K, 3000K or 4000K.



**NTM-616/45**  
6" Reflector



**NTM-617/45**  
6" Baffle



**NLRS-6S11**  
6" LED Reflector



**NLRS-6S12**  
6" LED Baffle



**NHIC-928QAT**  
6" Medium Base Housing

**NHIC-928LMRAT**  
6" LED Dedicated Housing



**NHRIC-928QAT**  
6" Medium Base Housing

**NHRIC-928LMRAT**  
6" LED Dedicated Housing

Scan for info.



**LUMENS:** Up to 1200lm per foot

**COLOR TEMPERATURE:**

Dedicated or Selectable

30K

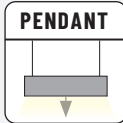
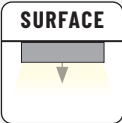
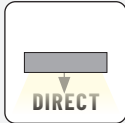
35K

40K

## NLIN / NLINSW

120-277V LED Linear System  
Surface or Pendant Mounted  
2' to 8' Linear and X, L & T Connectors

L-Line Direct LED linear luminaires offer a clean and modern appearance with a sleek extruded aluminum housing. Symmetrical light distribution will evenly illuminate surfaces with a diffused lens, making the L-Line ideal for commercial, retail, healthcare and education applications. Delivering **1050 lumens per foot** in dedicated CCT or selectable CCT options (**3000K, 3500K or 4000K**). Internal quick connects allow systems to be connected with seamless luminous L, X or T connectors.



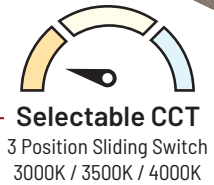
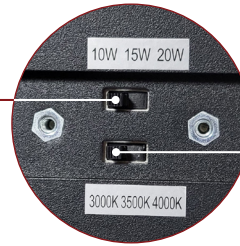
NLIN-PCC  
Pendant Mounting Kit

NLINSW-2  
2' Linear

NLIN-JBC  
Surface Mount Kit



**Now Available with  
Emergency!**



NLINSW-L10  
L-Connector



NLINSW-X10  
X-Connector



NLINSW-T10  
T-Connector

Scan for info.



**LUMENS:** 1050lm per foot

**COLOR TEMPERATURE:** Dedicated

30K

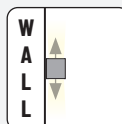
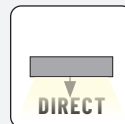
35K

40K

## NWLIN

120-277V LED Wall Mount  
Continuous runs up to 80'  
Two Wall Plates Sizes (2"x4" & 4"x4")

L-Line LED wall mount luminaires maintain the same appearance as NLIN luminaires. Symmetrical light distribution will evenly illuminate surfaces with a diffused lens. Maintaining the same internal components as NLIN, luminaires can be daisy chained up to 80'. Delivering **1050 lumens per foot** in dedicated CCT options (**3000K, 3500K or 4000K**). L-Line is ideal for commercial, retail, healthcare and education applications.



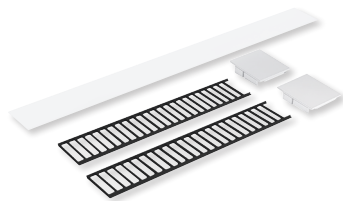
2"x4"  
Square Wall Plate

4"x4"  
Square Wall Plate

NWLIN-410A/L4P-R2  
(2) 4' L-Line Wall Mount  
(power feed on left)

**Seamless Connection**  
Hardware included to daisy chain up to 80'





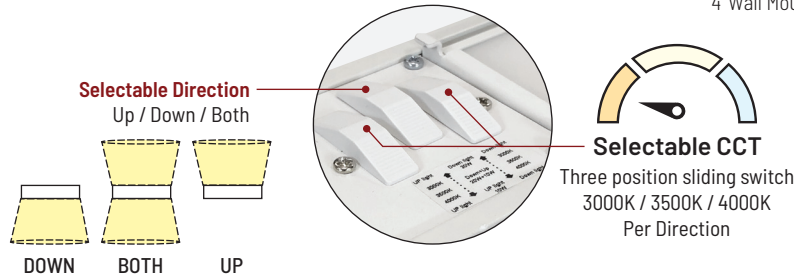
**New Options!**  
Occupance Sensor &  
Louver Accessories

NLUD-PCC  
Pendant Mounting Kit



NLUD-4334  
4' Linear Luminaire

NLUD-4WM  
4' Wall Mount Kit



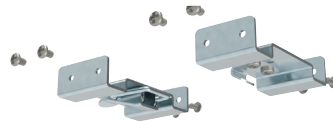
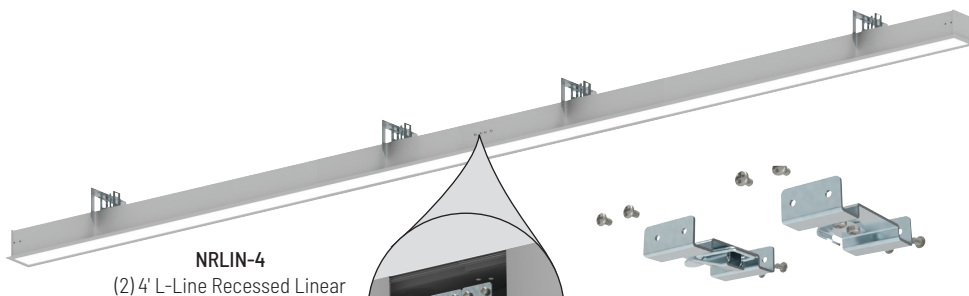
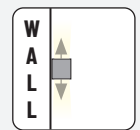
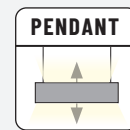
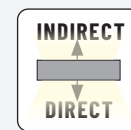
**LUMENS:** 1643lm per foot  
**COLOR TEMPERATURE:** Selectable



## NLUD

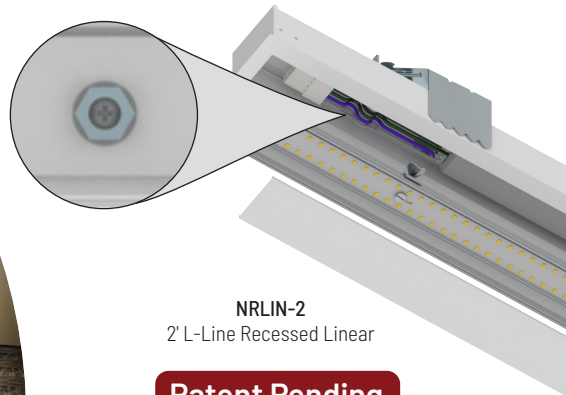
120-347V Linear LED Indirect / Direct  
Selectable Direction & Selectable CCT  
Pendant or Wall Mounted

L-Line LED indirect / direct luminaires include three integral switches for direction of light and selectable color temperature per direction. Sleek extruded housing with symmetrical light distribution will evenly illuminate surfaces with a diffused lens. These pendant or wall mounted fixtures are ideal for commercial, retail, healthcare and education applications. Internal quick connects allow systems to be connected with seamless luminous L, X or T connectors



Luminaires can be connected together  
with bracket accessory.

**Continuous Lens  
now available!**



**Patent Pending**



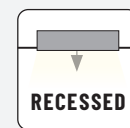
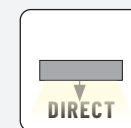
**LUMENS:** 1050lm per foot  
**COLOR TEMPERATURE:** Dedicated



## NRLIN

120-277V LED Recessed Linear  
Continuous runs up to 80'  
2' to 8' Linear Lengths

L-Line LED recessed luminaires maintain the same appearance as NLIN luminaires. Each luminaire includes a finished flange in white or aluminum finish. Maintaining the same internal components as NLIN, luminaires can be daisy chained up to 80'. Delivering 1050 lumens per foot in dedicated CCT options (3000K, 3500K or 4000K). L-Line is ideal for commercial, retail, healthcare and education applications.



Scan for info.



**LUMENS:** 2100lm

**COLOR TEMPERATURE:** Dedicated

27K

30K

40K

## 16" ELO

Surface or Pendant Mounted  
Stem or Cable Mounting Kits  
Dedicated CCT (2700K, 3000K, 4000K)

16" ELO LED Surface mount luminaires are a minimalist appearance at only 1" thick. Luminaire can be surface mounted over a junction box or suspended with accessories. Delivering up to **2100 lumens** in dedicated CCT options (**2700K, 3000K, 4000K**) and available in **black or white finish**.



**Sloped Canopy**

allows for all wires to be enclosed in stem



**Now Available in Black!**

**NELOCAC-16R**  
16" ELO



**NELOCAC-16PKW**  
Pendant Kit for 16"



**NELOCAC-16STW**  
Stem Kit for 16"

Scan for info.



**LUMENS:** 650lm to 1550lm

**COLOR TEMPERATURE:** Selectable

27K

30K

35K

40K

50K

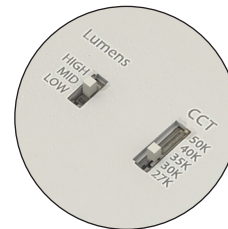
## NELOSW

Three Sizes (4", 6" & 8")  
120-277V Input; 0-10V Dimming  
Selectable CCT (27K/30K/35K/40K/50K)

ELO LED Surface mount luminaires include two tunable switches; Selectable Lumens allows the end user to determine the wattage input & Selectable CCT changes the color temperature appearance. ELOSW luminaires are commercial grade (**120-277V input; 0-10V dimming**), available in three sizes (**4", 6" & 8"**) and five color temperatures (**2700K / 3000K / 3500K / 4000K / 5000K**).



**Selectable Lumens**  
3 Position Sliding Switch  
(varies per luminaire)



**Selectable CCT**  
Five position sliding switch  
27K / 30K / 35K / 40K / 50K

**Now with Selectable Lumens & CCT  
and Wet Location rated!**



**NELOSW-4RTWMPW**  
4" ELO with  
Selectable Lumens & CCT



**NELOSW-6RTWMPW**  
6" ELO with  
Selectable Lumens & CCT



**NELOSW-8RTWMPW**  
8" ELO with  
Selectable Lumens & CCT







Scan for info.



**LUMENS:** 850lm to 1750lm

**COLOR TEMPERATURE:** Selectable



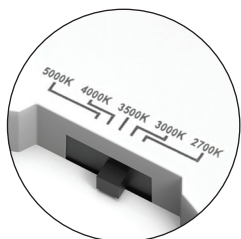
## NELO

Four Sizes (4", 6", 8" & 12")

120V Input; Triac / ELV Dimming

Selectable CCT (27K/30K/35K/40K/50K)

ELO LED Surface mount luminaires are  $\frac{3}{4}$ " thick with a built-in Selectable CCT switch. Wet location rated luminaires are designed to surface mount over a standard or fire rated junction box. Available in four sizes (4", 6", 8" & 12") and accept decorative ring accessories to change the appearance. Luminaires are a perfect solution for wet location, multi-family, residential and light commercial applications. 6" luminaires can be used with emergency enclosure for battery backup applications.



**Selectable CCT**

Five position sliding switch  
27K / 30K / 35K / 40K / 50K

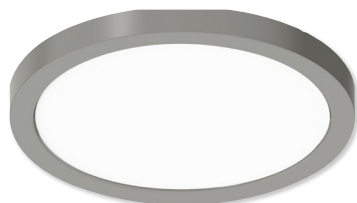
**Now with Selectable CCT  
and Wet Location rated!**



**NELO-6RB  
NELO-6RTWMPW**  
6" ELO with Selectable CCT  
Black Decorative Ring



**NELO-4RTWMPW**  
4" ELO with  
Selectable CCT



**NELO-8RBN  
NELO-8RTWMPW**  
8" ELO with Selectable CCT  
Brushed Nickel Decorative Ring



**NELO-12RB  
NELO-12RTWMPW**  
12" ELO with Selectable CCT  
Black Decorative Ring



**Decorative Ring Accessories**  
Black or Brushed Nickel



**NELO-6RTW / NSEM-6WD**  
6" ELO with  
Emergency Battery

Scan for info.



**LUMENS:** 750lm to 1150lm

**COLOR TEMPERATURE:** Selectable

27K

30K

35K

40K

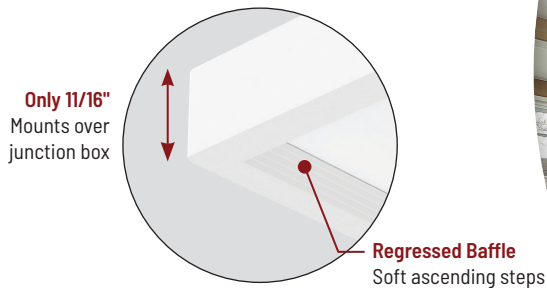
50K

## SURF

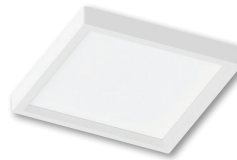
Three Sizes (4", 6" & 7")

Regressed Baffle with Light Guide  
Honeycomb Lens removes glare

SURF Edge-Lit Surface Mount is an aesthetically pleasing luminaire that produces even illumination while reducing glare. The specially designed regressed lens greatly reduces aperture brightness and extends less than  $\frac{1}{16}$ " from the ceiling. Series is available in square and round, 2700K, 3000K, 3500K, 4000K and 5000K temperatures with an architectural elegance for today's specification standards. SURF mounts easily over a standard or fire rated fixture junction boxes.

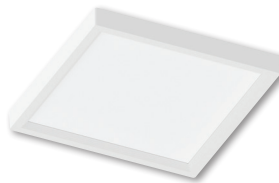


NL0S-R4TW  
4" Round  
Selectable CCT



NL0S-S4TW  
4" Square  
Selectable CCT

**Light Guide with Honeycomb Lens**  
Best Surface Mount Eliminates Glare!



NL0S-S6TW  
6" Square  
Selectable CCT



NL0S-R7TW  
7" Round  
Selectable CCT



**Selectable CCT**

Five position sliding switch  
27K / 30K / 35K / 40K / 50K

**Now with Selectable CCT**

Scan for info.



**LUMENS:** 700lm to 2150lm

**COLOR TEMPERATURE:**

Dedicated or Selectable

27K

30K

35K

40K

50K

## OPAL

Four Sizes (4", 6", 7" & 8")

Regressed, Motion Sensor or Standard  
Surface Mount or Retrofit

AC Opal Series LED fixtures are designed to surface mount over a standard junction box. The low  $\frac{7}{8}$ " profile luminaires are available in 4", 6" and 8" sizes from 700lm to 2150lm in three finishes; 4" and 6" regressed style and 7" 1050lm unit with PIR motion sensor and Selectable CCT. Opal is an excellent energy efficient lighting solution for laundry rooms, closets, pantries, hallways and showers in residential and commercial retrofit or new construction applications.



**Now with Selectable CCT**  
NLOPAC-R7MSTW  
7" Opal with Motion Sensor and  
Selectable CCT



**Selectable CCT**

Five position sliding switch  
27K / 30K / 35K / 40K / 50K



NLOPAC-R4509T24  
4" Opal  
Dedicated CCT



NLOPAC-6REGT24  
6" Regressed Opal  
Dedicated CCT



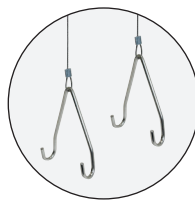
NLOPAC2-R6509T24  
6" Opal 2  
Dedicated CCT



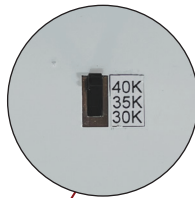
NLOPAC-R8T24  
8" Opal  
Dedicated CCT







**Pendant Kit**  
Includes 8' Aircraft Cable

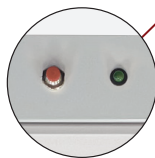


**Selectable CCT**  
Three position switch  
3000K / 3500K / 4000K

**Now Available with  
Integral Motion Sensor!**



**Optional Emergency**  
Integral Test Switch and Indicator Light



**NLSTR**  
4' or 8' Strip Light



Scan for info.

**LUMENS:** 3300lm or 8000lm  
**COLOR TEMPERATURE:** Selectable



## STRIP LIGHT

Two Sizes (3300lm / 4' or 8000lm / 8')  
120-277V input; 0-10V dimming  
Emergency & Motion Sensor options

Industrial LED Tunable Strip Light includes an integral CCT switch to change the color temperature at any time! Ideal for commercial, residential, industrial and retail applications. Luminaire's lens is designed to evenly spread the light in a complete 120° beam pattern. The smooth lens makes for easy maintenance and no diode image. NLSTR can be used in storage or utility buildings, coves, display cases, workshops and garages for task and general lighting.



**Selectable CCT**  
Three position sliding switch  
3000K / 3500K / 4000K

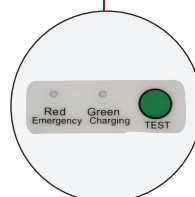


**Selectable Lumens**  
Three position sliding switch  
7000lm / 7500lm / 8000lm

**Pendant Kit  
also available!**



**NLWPSW-4334W**  
4' Wraparound



**Optional Emergency**  
Integral Test Switch  
and Indicator Light



Scan for info.

**LUMENS:** Selectable (7000lm to 8000lm)  
**COLOR TEMPERATURE:** Selectable



## WRAPAROUND

Selectable Lumens & Selectable CCT  
120-277V input; 0-10V dimming  
Emergency & Motion Sensor options

Industrial LED Wraparound L-Line LED Direct luminaires include two integral switches for lumen output and selectable color temperature. Ideal for commercial, residential, industrial, and retail applications, such as; stairwells, hallways, garages, schools, offices, and more. Easy to install and great for replacing outdated fluorescents with an energy efficient, cost saving alternative. The luminaire's lens is designed to uniformly spread and soften the appearance of the light while maximizing its distribution and output.



Scan for info.



**LUMENS:** 3000lm (1500lm per direction)

**COLOR TEMPERATURE:** Selectable

30K

40K

50K

## WALL MOUNT CYLINDER

### 3" Outdoor Rated Cylinder

Selectable Direction (Up / Down / Both)

Selectable CCT (3000K / 4000K / 5000K)

Architectural grade ADA compliant up-and-down wall mount cylinder with two dedicated COB LEDs mounted in the up and down position. Each cylinder includes two integral switches to change the direction of light and color temperature after installation. IP65 and wet location rated for most indoor and outdoor applications. Powder coated in three architectural finishes (bronze, black or matte powder white).



**NYUD-3L1345B**  
Black Finish



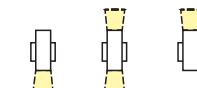
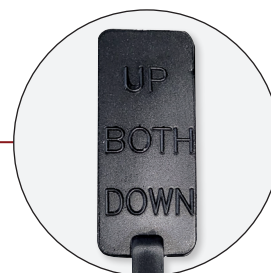
**NYUD-3L1345BZ**  
Bronze Finish



**NYUD-3L1345MPW**  
Matte Powder White Finish



**Selectable CCT**  
Three position switch  
3000K / 4000K / 5000K



**Direction of Light**  
Down / Both / Up





**2" iLENE accepts  
Cone Accessory!**



**NYLM-2CONE**  
2" Cone Accessory



**NYLM-2C**  
2" Cable



**NYLM-3ST**  
3" Stem



**NYLM-5ST**  
5" Stem



**NYLM-2SC**  
2" Surface



**NYLM-3SC**  
3" Surface



**NYLM-5SC**  
5" Surface



Scan for info.

**LUMENS:** 1000lm to 2000lm  
**COLOR TEMPERATURE:** Dedicated



## iLENE™ MINI CYLINDERS

Three Sizes (2", 3" & 5")  
Surface, Stem or Cable Mounted  
Architectural Die-Cast Finishes

iLENE LED Mini Cylinders consists of three sizes, multiple finishes and is offered in a surface, stem or cable mounted. Using Cree COB or Comfort Dim technology the cylinders produce 1000lm (2"), 1500lm (3") or 2000lm (5"). Each iLENE cylinder includes three field changeable optics for maximum design control. Optional accessories can further customize the fixtures.



**NYLD2-6S**  
Surface Mounted



**NYLS3-6P**  
Stem Mounted



**NYLS3-6C**  
Cable Mounted



**NYLI-6W**  
Wall Mounted



Scan for info.

**LUMENS:** 750lm to 5500lm  
**COLOR TEMPERATURE:** Dedicated



## 6" CYLINDERS

Surface, Stem, Cable or Wall Mounted  
Ten Architectural Finishes  
Specifiable Beam Spreads

6" Cylinders are available in three different series: Sapphire III (up to **5500lm w/ specifiable beam spreads**), Cobalt (up to **1000lm**) and **Medium Base** Incandescent/LED. Each cylinder has four different mounting types for any application; Cable mounted includes 8' cable, Wall mount is Wet Location rated, Surface mounted or Stem mounted with new sloped canopy.



**Sloped Canopy**  
allows for all wires to  
be enclosed in stem

Scan for info.



**LUMENS:** 1200lm to 3800lm  
**COLOR TEMPERATURE:** Dedicated

30K 35K 40K

## RLM SHADES

Three Sizes (8", 10" & 16")  
120/277V input; Phase or 0-10V dimming  
Three Finishes (White, Gun Metal, Black)

Aluminum spun shades with built-in dimmable driver and LED COB technology provide excellent general illumination. The optics are set deep inside the shades for visual comfort while producing **up to 2200 lumen (8"), 3000 lumen (10") or 3800 lumens (16") at 90+ CRI.** Shades' exterior finishes include: white, black and gun metal with reflective white interior bowls. Dedicated color temperature include **3000K, 3500K and 4000K**, the shades are a perfect solution for retail, commercial, and hospitality applications.



**NRLM-10ST**  
10" Shade  
Stem Mounted



**NRLM-8C**  
8" Shade  
Cable Mounted



**NRLM-16C**  
16" Shade  
Cable Mounted



Scan for info.



**LUMENS:** 2600lm to 5700lm  
**COLOR TEMPERATURE:**  
Dedicated 5000K or Selectable

30K 35K 40K 50K

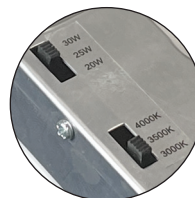
## BACKLIT PANELS

Three Sizes (1'x4', 2'x2' & 2'x4')  
Selectable Lumens and Selectable CCT  
Lay-In, Surface, Recessed or Cable Mounted

LED Panels produce uniform, glare-free illumination in offices, conference rooms, libraries and other task areas where general illumination is desired. Backlit panels include a **field selectable CCT switch** which allows the luminaire to be switched (3000K / 3500K / 4000K) or **dedicated 5000K.** LED Panels are available in three sizes: **2' x 2', 1' x 4' and 2' x 4',** which can be installed in most grid ceilings. Optional mounting accessories are available for surface mounting, recessed mounting into hard ceilings or pendant mounting. Emergency options are also available, along with **new integral motion sensor.**



**Selectable Lumens**  
Three position sliding switch



**Selectable CCT**  
Three position sliding switch  
3000K / 3500K / 4000K

**Now Available with  
Integral Motion Sensor!**



**NPDBLSW-E22 (3500lm)**  
NPDBLSW-E22 (Selectable Lumens)  
2' x 2' Panel



**NPDBLSW-E14 (3500lm)**  
NPDBLSW-E14 (Selectable Lumens)  
1' x 4' Panel



**NPDBLSW-E24 (5700lm)**  
NPDBLSW-E24 (Selectable Lumens)  
2' x 4' Panel





Scan for info.

**LUMENS:** Selectable (4000lm to 6950lm)

**COLOR TEMPERATURE:** Selectable



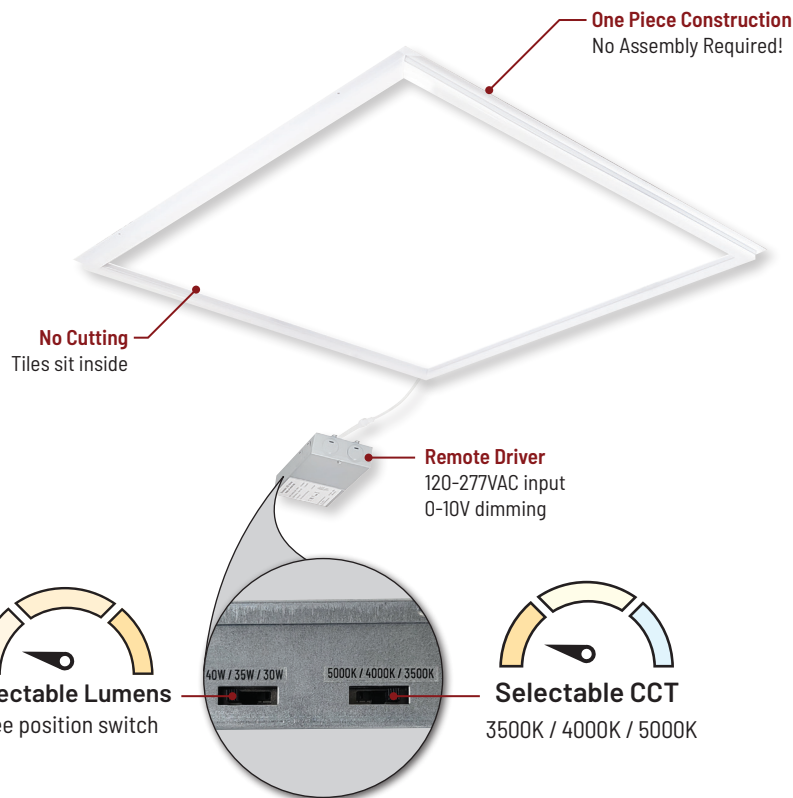
## FRAME LIGHT

Two Sizes (2'x2' & 2'x4")

Selectable Lumens & Selectable CCT

One Piece Construction - No Assembly!

LED Frame lights are a perimeter fixture for standard ceiling grids. Existing ceiling grid will sit inside the frame light, **no cutting required**. Perfect solution for commercial applications such as conference rooms, libraries and offices. **One piece construction and ready to be installed out of the box**, compared to competitors which require each fixture to be assembled. Luminaires include two **field selectable CCT switches** for color temperature and brightness. Universal input (120-277VAC) and dimmable with compatible 0-10V dimmers.



**NPTPSW-E22**  
2' x 2' LED Frame Light  
(4000lm to 5000lm)



**New Size!**  
**NPTPSW-E24**  
2' x 4' LED Frame Light  
(5850lm to 6950lm)



Scan for info.



**LUMENS:** 1600lm or 3200lm  
**COLOR TEMPERATURE:** Selectable

30K 35K 40K

## T-LINE TRACK

Linear Track Head with Selectable CCT  
Two Sizes (23" / 1600lm or 45" / 3200lm)  
Field Changeable Lenses & Accessories

T-Line is a unique LED linear track head with field changeable lenses to change the light distribution. Track heads are available in two lengths and lumen outputs; 1600lm (2') or 3200lm (4') for general illumination and combine it with directional track heads for a perfect solution to retailing or retrofitting existing track with energy efficient LED light. T-Line features a selectable CCT switch using dip switches in the end of each track head, which can be set at 3000K, 3500K or 4000K. T-Line comes standard with a frosted symmetrical lens, asymmetric lenses and visor are available for aisle lighting or directional lighting.



**Visor Accessory**  
Use with asymmetric lens for wall washing



NTE-LIN2TW (23")  
NTE-LIN4TW (45")  
T-Line



**Selectable CCT**

Three position sliding switch  
3000K / 3500K / 4000K



Scan for info.



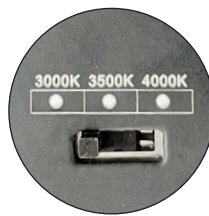
**LUMENS:** 1450lm  
**COLOR TEMPERATURE:** Selectable

30K 35K 40K

## JASON PS TRACK

Selectable CCT (3000K / 3500K / 4000K)  
Specifiable Beam Spread  
Optional Accessories

Jason PS LED track heads feature an integral color temperature switch, allowing the end user to change the color temperature. Luminaire delivers **1450 lumens** in three color temperatures (**3000K / 3500K / 4000K**) @ **90 CRI**. Track heads can be specified in **spot, narrow flood or flood beam spread** to create the ideal cone of light per application. Jason track heads include a clear glass and accept a variety of accessories ranging from **barndoors, snoot, shield or louver**. Making this series ideal for residential to commercial applications to compliment any space.



**Selectable CCT**

Three position sliding switch  
3000K / 3500K / 4000K



**Specifiable Beam Spreads**  
Spot, Narrow Flood and Flood



NTE-856  
Jason PS





**NTE-875L9CDX**  
MAC XL Comfort Dim



**NTE-870L**  
MAC



**NTE-875L**  
MAC XL



Scan for info.

**LUMENS:** 800lm to 1250lm  
**COLOR TEMPERATURE:** Dedicated



## MAC TRACK

**AC LED — No Driver!**  
**Dedicated CCT or Comfort Dim**  
**Field Changeable Optics**

MAC LED Track heads have an eclectic style to fit any decor. Luminaire features **COB LED technology** allowing for better optic control and include two **field changeable optics (spot or flood)**. MAC delivers **800 lumens** and MAC XL delivers **1250 lumens** in **2700K, 3000K, 3500K or 4000K** at 90+ CRI. **Comfort Dim (warm dimming)** option now available for MAC XL. AC LED allows for no driver to maintain a small appearance in **white, black or silver** finishes. Track adapters can be converted to J and L style adapters.



**Warm Dim Option**  
Color temperature  
warms as luminaire is  
dimmed

**NTE-860**  
MAY



**Specifiable Beam Spreads**  
Spot, Narrow Flood and Flood  
(Note: NTE-864 includes  
narrow flood only)



**NTE-864**  
MAX Mini

**NTE-865**  
MAX

**NTE-866**  
MAX XL



Scan for info.

**LUMENS:** 650lm (Comfort Dim) or 850lm (Dedicated)  
**COLOR TEMPERATURE:** Dedicated



Scan for info.

**LUMENS:** 1000lm to 3650lm  
**COLOR TEMPERATURE:** Dedicated



## MAY TRACK

**AC LED — No Driver!**  
**850lm • Dedicated CCT or Comfort Dim**

May LED Track heads offer clean, modern style for any application. Track heads feature AC LEDs that require no driver, allowing for minimalist appearance. May luminaires deliver up to **850 lumens** at **2700K, 3000K, 3500K or 4000K** @ 90 CRI. **Comfort Dim (warm dimming)** option warms the color temperature from **2900K to 1800K** as the fixture is dimmed. Track heads include a **narrow flood optic** and available in **black or white** finishes. May Track heads are certified to the high efficacy requirements of California Title 24. Track adapters can be converted to J and L style adapters.



## MAX TRACK

**Three Sizes and Three Outputs**  
**Specifiable Beam Spreads**  
**Three Sizes • Premium TIR optics**

MAX LED Track heads features **COB LED technology** allowing for better optic control and **premium TIR optics (spot, narrow flood or flood)**. Track heads are available in three sizes and lumen outputs (**1000 to 3650 lumens**) in **2700K, 3000K, 3500K or 4000K** at 90+ CRI. Cylindrical design allows is ideal for higher ceilings and commercial applications in **white, black or silver** finishes. Track adapters can be converted to J and L style adapters.





Scan for info.



**LUMENS:** 1400lm

**COLOR TEMPERATURE:** Selectable

27K

30K

35K

40K

50K

## Z-TRACK

Field Adjustable Beam Spread (20° to 50°)  
Selectable CCT (27K/30K/35K/40K/50K)  
Delivering up to 1400 lumens

Zoomable Track Head offers aesthetics, flexibility and performance. Delivering **up to 1400lm** and featuring a **field-adjustable beam angle** from 20° to 50°, it provides precise light control for any setting. Each luminaire a **five selectable CCT** technology, which allows easy color temperature adjustment from **2700K to 5000K**, making it ideal for diverse applications. Perfect for retail, galleries, and commercial spaces, this innovative fixture seamlessly adapts to both accent and general lighting needs.



**NTZ-L1TWB**  
Black Finish



**NTZ-L1TWWW**  
White Finish

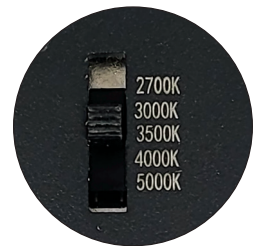


**Field Adjustable Beam Angle**  
20° Spot to 50° Narrow Flood



**Selectable CCT**

Five position sliding switch  
27K / 30K / 35K / 40K / 50K







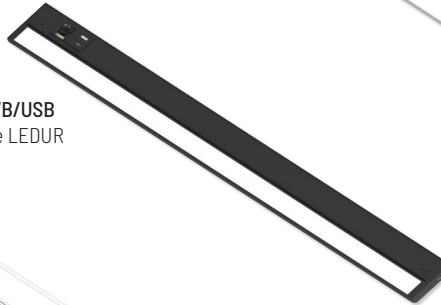
**NUDA-16TWB/USB**  
16" Adjustable LEDUR



**NUDA-24TWMPW/USB**  
24" Adjustable LEDUR



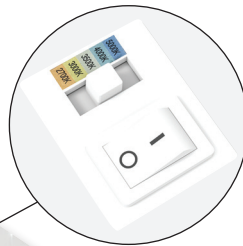
**NUDA-32TWB/USB**  
32" Adjustable LEDUR



**NUDA-42TWMPW/USB**  
42" Adjustable LEDUR



**Input / Output**  
Linkable up to 150W



**Selectable CCT**

Five position sliding switch  
27K / 30K / 35K / 40K / 50K

**Adjustable Lens**  
± 35° Adjustment

**NUDA-10TWMPW**  
10" LEDUR Adjustable

**Captive Screws**  
Covers included

Scan for info.



**LUMENS:** 550lm per foot  
**COLOR TEMPERATURE:** Selectable



## ADJUSTABLE LEDUR

120V Adjustable Under Cabinet  
Selectable CCT (27K/30K/35K/40K/50K)  
USB-A & C Ports included (10" not included)

**Adjustable LEDUR** under cabinet fixtures are available in five sizes (10" to 42") and two finishes (**black or matte powder white**). Each fixture includes an On/Off rocker switch and Selectable CCT switch (27K/30K/35K/40K/50K). LEDUR fixture's lens can be **adjusted ±35°** in either direction to aim the light in desired location. Linkable fixtures can be fed through input quick connects or hardwired through the back. Delivering over **550 lumens per foot** with edge-lit LEDs to eliminate the diode image and provide uniform reflectance of light without hot spots. 16" to 42" fixtures include **USB-A and USB-C ports** with 5V 1A charging capabilities.



**USB-A & USB-C Ports**  
included with 16", 24", 32" & 42"

Scan for info.



**LUMENS:** 37lm to 86lm

**COLOR TEMPERATURE:** Dedicated

30K

40K

## ARI STEP LIGHTS

Three Face Plate Styles  
Fits into a Single Gang Switch Box  
Screwless Clean Appearance

The aesthetically pleasing 2.5W or 5W ARI LED step light directs light onto the surface below while shielding the LED source from view. Ari face plates include **vertical**, **horizontal** or **interchangeable face plate**, in **matte powder white**, **brushed nickel** or **deep bronze** finish. Available in **3000K or 4000K @ 90 CRI**. Long lasting, low maintenance, energy efficient LED step lights provide illumination for safety around steps, balcony areas, or walkways while saving over 80% in running costs when compared to 10W incandescent step lights.



**NSW-720**  
Interchangeable Face Plate



**NSW-730**  
Vertical Face Plate



**NSW-740**  
Horizontal Face Plate



Scan for info.



**LUMENS:** 850lm per foot

**COLOR TEMPERATURE:** Selectable

30K

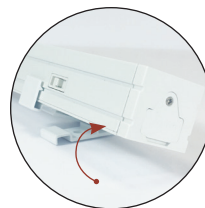
35K

40K

## BRAVO FROST TW

120V LED Linear with Selectable CCT  
Four Sizes (12", 16", 24" & 32")  
90° Adjustable Brackets included

Low profile Bravo FROST TW (**Selectable CCT**) LED linear luminaires offer a **diode image-free** solution for residential and commercial use. Less than 1" in depth, Bravo FROST TW fixtures can be installed under cabinets, within shelves/displays and architectural coves. Bravo FROST TW offers **850 lumens / 10W per foot** with a **selectable CCT switch** which can be set at **3000K, 3500K or 4000K**. Each fixture includes adjustable mounting brackets that adjust the luminaire up to 90° and **lengths range from 12" to 32"**. An encapsulated 120V dimmable LED driver in each unit allows extended runs and easier installation with **3-wire system**.

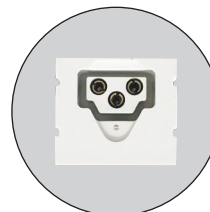


Adjust up to 90°



**Selectable CCT**  
Three position sliding switch  
3000K / 4000K / 5000K

**NUDTW-98**  
Bravo FROST with Selectable CCT



3-wire system meets most  
code requirements





NMP-LED (12V)  
NMP2-LED (24V)  
Fixed



NMP-A / NMP-AREC (12V)  
NMP2-A / NMP-AREC (24V)  
Adjustable with Recessed Flange



Black

Bronze

Brushed Nickel

White

Scan for info.



**LUMENS:** 300lm

**COLOR TEMPERATURE:** Dedicated

27K

30K

35K

40K

## JOSH LED PUCK

12V or 24V input & Dimmable  
Recessed or Surface Mounted  
18° Adjustable or Fixed Puck Light

Josh LED puck lights can be **surface or recessed mounted** with an included finished collar. 12V or 24V **Dimmable LED** luminaires produces up to **300 lumens** with **2700K, 3000K, 3500K or 4000K**. Each luminaire includes a frosted lens to eliminate hot spots generated by direct view LEDs, which reflects on surfaces. Josh is available in **black, bronze, brushed nickel or white** finishes.



NPSU  
Class 2  
Dimmable Drivers

Scan for info.



**INPUT:** 110-277V input

**OUTPUT:** 12V or 24V

**DIMMING:** Triac, ELV, MLV, 0-10V or PWM



NATL-SWEX60 (60W)  
NATL-SWEX100 (100W)  
NEXUS

Scan for info.



**INPUT:** 120V input

**OUTPUT:** 12V or 24V

**DIMMING:** Built-In

## 5-IN-1 DRIVERS

Compatible with 12V or 24V Systems  
60W, 96W or 288W (3 x 96W Channels)  
Five Dimming Protocols in One

Constant voltage drivers are available for **12V or 24V** under cabinet and linear systems. **Five dimming protocols** (Triac, ELV, MLV, 0-10V, PWM) **within one driver**. Dimmable down to 1% with over-current, over-voltage and temperature protection. NEMA 4X enclosure is rated for **wet locations**.



## NEXUS®

LED Driver and Dimmer All-In-One  
Compatible with 12V or 24V Systems

The NEXUS all-in-one LED driver and dimmer eliminates compatibility issues by combining an **LED dimmer switch and power supply in one integrated unit**. NEXUS mounts in a standard in-wall switch box and fits a standard Decora switch plate. The unit is **available in 12V or 24V 60W and 24V 100W**, provides 100% to 5% dimming, converts 120V AC to DC low voltage. A white face plate is included, and an optional face plate kit with black, brown and almond plates are available.





Scan for info.



**LUMENS:** 525lm per foot  
**COLOR TEMPERATURE:** Dedicated

27K

30K

40K

## NULS-LED

120V LED Linear  
Four Lengths (11", 21", 33" & 45")  
Dedicated CCT • 80+ CRI

NULS LED undercabinet produces over **525 lumens per foot** while consuming only **5W** and is available in **2700K, 3000K or 4000K**. 120V input voltage **eliminates the need for any drivers** and wattage concerns. Luminaires can be **connected together seamlessly** or with cable accessories. Each system can be **hardwired into a junction box and dimmed**. Ideal for under cabinet, in cabinet, cove, display, general commercial, retail and residential lighting applications.



3-wire system meets most code requirements

Available in four different lengths  
11", 21", 33" and 45"

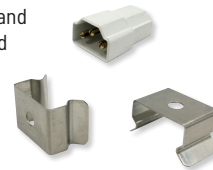


Side View



**NULS-LED**  
120V LED Linear

Mounting brackets and coupler are included (NULSA-MTGKIT)



Scan for info.



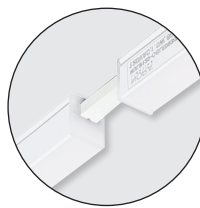
**LUMENS:** 200lm per foot  
**COLOR TEMPERATURE:** 3000K

30K

## 120V LIGHTBAR

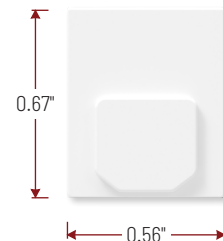
120V LED Linear  
Four Lengths (6", 12", 24" & 48")  
Internal Magnets for Easy Mounting

120V LED Lightbar creates an uniform seamless line of light, with internal magnets for easy installation. Producing 200 lumens per foot with a dedicated 3000K, lightbar is a perfect solution for under cabinet, in cabinet, cove, display, and task applications. Variety of connectors and accessories allows luminaires to be connected together up to 40'.



Mounting brackets and end-to-end connector included

Side View



Available in four different lengths  
6", 12", 24" and 48"



**NULB120**  
120V LED Lightbar



NX-603D-LED/B  
Black Housing

Two Colors in One!



NX-603D-LED  
White Housing

## LED EXIT SIGN

Dual Color LED Exit Sign with Battery Backup  
Selectable Color Switch (Red / Green)

Slim profile universal exit sign includes an **internal switch to change the color of LEDs** to red or green. Mounting hardware can be repositioned for wall, end or ceiling mount applications. Each luminaire includes an emergency battery to keep the exit sign illuminated for 90 minutes during a power outage.

Scan for info.



NE-700LEDRC

## DUAL HEAD

LED Emergency Light w/Remote Capability

Mini profile LED emergency light with remote capability and self diagnostics. Two adjustable 100lm heads include an extra 3.6V battery for 3W remote capabilities. Available in black or white finish and wet location / vandal resistant enclosure.

Scan for info.



Selectable CCT

Three position sliding switch  
3000K / 4000K / 5000K

## OUTDOOR EMERGENCY

Outdoor decorative light with dual functions (**general illumination and emergency lighting**). During normal operation, the luminaire will operate with integral photosensor (dusk til dawn) **delivering 1250 lumens**. During emergency operation, an internal battery will operate the luminaire for 90 minutes, **delivering 400 lumens for egress illumination**.

NORA<sup>®</sup>  
LIGHTING



NX-617

NEX-720

NE-970

## WET LOCATION

Exit & Emergency

Wet Location LED exit and emergency lights include self diagnostic tests with notification of any failures or malfunctions. Each exit sign includes an optional second face. Long lasting LED sources without maintenance for egress lighting where splashing, non-corrosive liquids and dripping may occur.

NX-612LEDB  
Black Housing

NX-612LEDW  
White Housing

Scan for info.



## COMPACT DUAL HEAD

Luminaire provides 90 minutes of light from two adjustable heads upon power failure. Available in standard, remote capability, and self diagnostic options. ABS housing with UL 5VA flame rating.



NE-921LEDBCC  
Black Housing

NE-921LEDBZCC  
Bronz Housing

NE-921LEDWCC  
White Housing

Scan for info.



**LUMENS:** 80lm to 450lm per foot  
**COLOR TEMPERATURE:** Dedicated

27K 30K 42K

## CONTINUOUS ROLLS

24V Tape Light Rolls with Flip Connectors  
Three Types (Standard, Hy-Brite, High Output)  
Field Cuttable Every 4"

Continuous LED tape are available in three outputs:

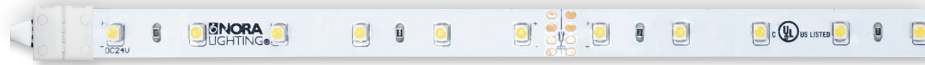
- **Standard Output: NUTP71**  
80lm / 1.5W per foot  
100' or 20' rolls  
64' maximum run length
- **Hy-Brite: NUTP51**  
375lm / 4.25W per foot  
100' or 20' rolls  
25' maximum run length
- **High Output: NUTP81**  
450lm / 6.5W per foot  
20' or 16' rolls  
16' maximum run length



Flip connectors easily connect  
taape without soldering



NUTP71



NUTP51



NUTP81



Now with Surge Protection!



NUTP13

Scan for info.



**LUMENS:** 330lm per foot  
**COLOR TEMPERATURE:** Dedicated

27K 30K 40K

## 120V IP65 TAPE LIGHT

120V Tape • Hardwired or Cord & Plug  
Factory Cut and Sealed with IP65 Rating  
Surge Protector and Mounting Accessories

IP65 rated LED Tape Light is perfect solution for indoor or outdoor applications without the need for LED drivers. Producing **330 lumens per foot at 2700K, 3000K or 4000K @ 90+ CRI**. Tape is specified per length and factory installed with cord and plug or hardwired with TRIAC dimming. 120V input voltage **eliminates the need for any drivers** and wattage concerns.



Scan for info.



## ALUMINUM CHANNELS

4' Lengths and Field Cuttable

Variety of aluminum Channels for the LED Tape lights can be used to hold the tape in visible applications or can be used to hide or conceal the tape in other applications. Offered in 4' shallow and deep sizes, **three finishes**, with or without wings the channels are field cuttable. The unique "J" shape can be used to conceal tape in an under cabinet, book case or framing application. The "J" can even create an instant cove for accent lighting. Use the deep channel with wings to mount in a cabinet or wall to create visual interest or a small, slim line of usable light. Channels without wings are now available in black and white finishes.





**NUTP14** Dedicated CCT (H0)  
**NUTP15** Dedicated CCT (Standard)  
**NUTPCOB** RGBW

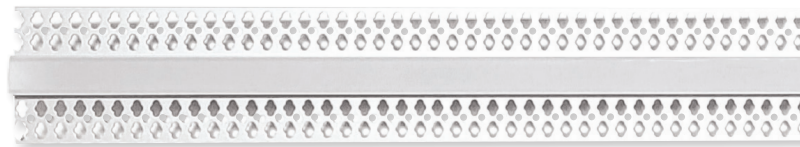
Cuttable every  
 1.79" (CCT) or  
 1.31" (RGBW)

Tape Width:  
 0.39" (CCT)  
 0.47" (RGBW)



Scan for NUTPCOB  
 (RGBW)

**NATL2-C29W**  
 Trimless Channel for  
 NUTP14 & NUTP15



Scan for info.



**LUMENS:** 210lm or 450lm per foot  
**COLOR TEMPERATURE:** Dedicated



Scan for info.



**LUMENS:** 300lm per foot  
**COLOR TEMPERATURE:** RGBW with Dedicated 3000K Diode



## COB TAPE LIGHT

24V Tape • 16.4' or 100' Rolls  
 Field Cuttable Every 1.79"  
 New Terminal Block Accessories

24V COB LED Tape Light creates an uniform seamless line of light, without the need for additional diffused covers or accessories. Available in two outputs (**210 or 450 lumens per foot**) with Dedicated CCT (**2700K, 3000K, 3500K or 4000K**) @ 90+ CRI. Terminal block accessories are now available for power feeds or jumper cables for easy installation. Tape light is a perfect solution for low clearance or reflective surfaces to eliminate all glare or dotting.

## RGBW COB TAPE LIGHT

24V Tape • 16.4' Roll  
 Field Cuttable Every 1.31"  
 Color Changing LEDs with Dedicated 3000K

24V RGBW COB Tape Light has alternating LED diodes that are RGB and White. Users can create any color in the rainbow using a compatible RGBW controller or DMX decoder. Producing up to **300 lumens per foot** and field cuttable every 1.31". A variety of accessories and channels are available for any application (cove, under cabinet, toe kick, etc.)

**NORA LIGHTING, INC.**

6505 Gayhart St.  
Commerce, CA 90040  
TEL 323.767.2600  
FAX 323.722.3677  
[www.NoraLighting.com](http://www.NoraLighting.com)

**DOMESTIC FACILITIES:**

Cincinnati, OH  
Dallas, TX  
Detroit, MI  
Edison, NJ  
Los Angeles, CA  
Louisville, KY  
Minneapolis, MN  
Nashville, TN

**INTERNATIONAL SALES:**

6505 Gayhart St.  
Commerce, CA 90040  
TEL 323.767.2600  
FAX 323.722.3677

The products shown in this catalog  
are covered by USA and International  
patents. Specifications subject to  
change without notice.

© Copyright 2025 Nora Lighting, Inc.  
All rights reserved