

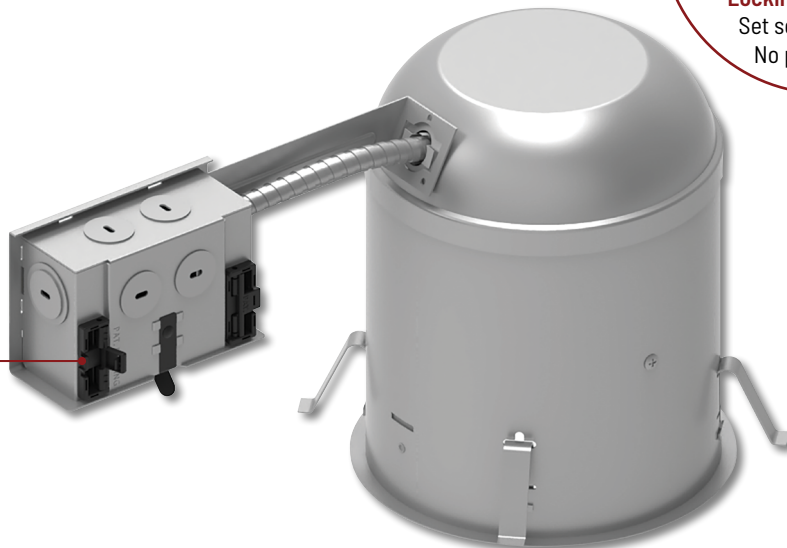
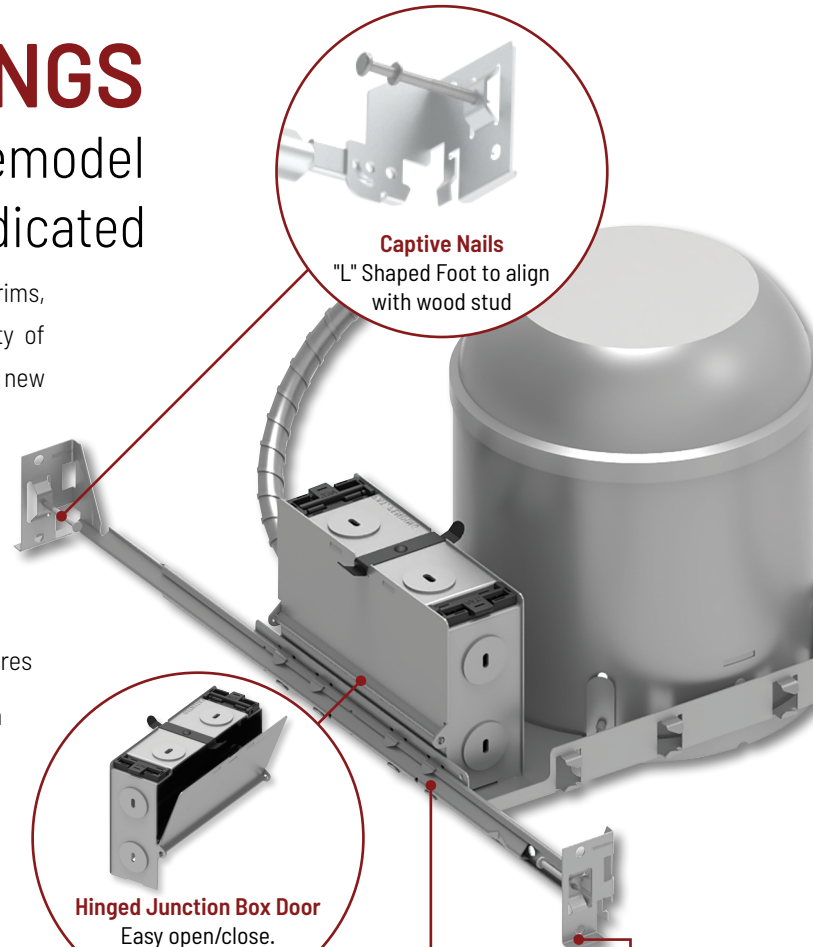
RECESSED HOUSINGS

3" to 6" New Construction & Remodel
IC & Non-IC • Shallow • LED Dedicated

Recessed housings install above the ceiling to accept variety of trims, lamps and luminaires. Depending on the ceiling plenum, a variety of options are available from shallow, fire rated, IC Air Tight and Non-IC new construction or remodel.

FEATURES

- Various sizes (3", 4", 5" and 6") and construction types
- Line voltage housings include a medium base socket
- LED Dedicated housings include a quick connect for LED luminaires
- IC rated housings allow for direct contact with thermal insulation
- Fire rated housings are rated for one-hour and two-hours
- 24-1/2" Adjustable bar hangers with locking set screw
- Some housings now include Romex® strain relief for cheaper and easier installation
- Some housings now include hinged junction box door for easier installation
- Emergency options (remote test switch and new ribbon test switch)
- cULus Listed



RECESSED HOUSINGS

3" HOUSINGS				
PART NUMBER	HOUSING TYPE	SOCKET	LAMP	NOTES
NHIC-350AT	3" IC Air-Tight Line Voltage New Construction Housing	GU10	50W MR16 max.	
NH-350AT	3" Non-IC Air-Tight Line Voltage New Construction Housing			
NHR-354AT	3" Non-IC Air-Tight Line Voltage Remodel Housing			
NLIC-301	3" IC Air-Tight Low Voltage New Construction Housing	GU5.3	50W MR16 max.	
NL-301	3" Non-IC Air-Tight Low Voltage New Construction Housing			
NLR-304	3" Non-IC Air-Tight Low Voltage Remodel Housing			
4" HOUSINGS				
NFBIC-401AT/25A	4" 2-Hour Fire Rated Line Voltage New Construction Housing	GU10	25W MR16 max.	
NSLIC-401AT/10	4" IC Air-Tight Line Voltage New Construction Housing		50W MR16 max.	
NSEIC-407AT/20	4" IC Air-Tight Line Voltage New Construction Housing		20W MR16 max.	Includes Romex Strain Relief
NSL-401AT/10	4" Non-IC Air-Tight Line Voltage New Construction Housing		50W MR16 max.	
NSLR-404AT/10	4" IC Air-Tight Line Voltage Remodel Housing			
NSERIC-407AT/20	4" IC Air-Tight Line Voltage Remodel Housing		20W MR16 max.	Includes Romex Strain Relief
NFBIC-4INCATA	4" 2-Hour Fire Rated Line Voltage New Construction Housing	Medium Base	35W max.	
NSIC-401QAT	4" IC Air-Tight Line Voltage New Construction Housing		50W max.	
NS-401QAT/IC	4" IC Air-Tight Line Voltage New Construction Housing		15W max.	Includes Romex Strain Relief & Hinged Door
NS-401QAT	4" Non-IC Air-Tight Line Voltage New Construction Housing		50W max.	Includes Romex Strain Relief
NSRIC-404QAT	4" IC Air-Tight Line Voltage Remodel Housing			
NSR-404QAT	4" Non-IC Air-Tight Line Voltage Remodel Housing			
NLIC-401	4" IC Air-Tight Low Voltage New Construction Housing	GU5.3	50W MR16 max.	
NLIC-408AT	4" Square ICAT Low Voltage New Construction Housing			
NL-401	4" Non-IC Air-Tight Low Voltage New Construction Housing			Includes Romex Strain Relief
NL-408AT	4" Square Non-IC Low Voltage New Construction Housing			
NL-402S	4" Shallow Air-Tight Low Voltage New Construction Housing			
NLR-404	4" Non-IC Air-Tight Low Voltage Remodel Housing			
NLR-409	4" Square Non-IC Air-Tight Low Voltage Remodel Housing			
NLR-403S	4" Shallow Non-IC Air-Tight Low Voltage Remodel Housing			
NFBIC-4LMRATA	4" 2-Hour Fire Rated LED Dedicated New Construction Housing	LED	16W max.	
NFBIC-427LMRATA	4" Shallow 2-Hour Fire Rated LED Dedicated Housing		14.5W max.	
NHIC-4LMRAT	4" IC Air-Tight LED Dedicated New Construction Housing		16W max.	Includes Romex Strain Relief
NHIC-427LMRAT	4" Shallow ICAT LED Dedicated New Construction Housing			
NHICCP-4LMRAT	4" Chicago Plenum LED Dedicated New Construction Housing			
NSIC-4LMRAT	4" IC Air-Tight LED Dedicated Housing for Pearl Adjustable			Includes Romex Strain Relief
NHRIC-4LMRAT	4" IC Air-Tight LED Dedicated Remodel Housing			
NHRIC-427LMRAT	4" Shallow IC Air-Tight LED Dedicated Remodel Housing			

RECESSED HOUSINGS

5" HOUSINGS				
PART NUMBER	HOUSING TYPE	SOCKET	LAMP	NOTES
NFBIC-5INCATA	5" 2-Hour Fire Rated Line Voltage New Construction Housing	Medium Base	75W max.	Includes Romex Strain Relief
NHIC-501QAT	5" IC Air-Tight Line Voltage New Construction Housing			
NHIC-527QAT	5" Shallow ICAT Line Voltage New Construction Housing		50W max.	
NHRIC-504QAT	5" IC Air-Tight Line Voltage Remodel Housing		75W max.	
NHRIC-527QAT	5" Shallow IC Air-Tight Line Voltage Remodel Housing		50W max.	
NFBIC-5LMRATA	5" 2-Hour Fire Rated LED Dedicated New Construction Housing	LED	17.5W max.	
NHIC-5LMRAT	5" IC Air-Tight LED Dedicated New Construction Housing			Includes Romex Strain Relief & Hinged Junction Box Door
NHIC-527LMRAT	5" Shallow ICAT LED Dedicated New Construction Housing			
NHRIC-5LMRAT	5" IC Air-Tight LED Dedicated Remodel Housing			Includes Romex Strain Relief
NHRIC-527LMRAT	5" Shallow IC Air-Tight LED Dedicated Remodel Housing			
6" HOUSINGS				
NFBIC-6INCATA	6" 2-Hour Fire Rated Line Voltage New Construction Housing	Medium Base	90W max.	
NHIC-17/100DWQA	6" IC Air-Tight Line Voltage New Construction Housing		100W max.	
NHIC-17QAT	6" ICAT Line Voltage New Construction Housing w/ Bracket		90W max.	Includes Romex Strain Relief & Hinged Junction Box Door
NHIC-17QNBAT	6" ICAT Line Voltage New Construction Housing w/o Bracket		150W max.	Includes Romex Strain Relief
NH-26Q	6" Non-IC Air-Tight Line Voltage New Construction Housing		75W max.	Includes Romex Strain Relief & Hinged Junction Box Door
NHIC-27QAT	6" Shallow ICAT Line Voltage New Construction Housing			
NH-27Q	6" Shallow Non-IC Line Voltage New Construction Housing		90W max.	Includes Romex Strain Relief
NHRIC-17QAT	6" ICAT Line Voltage Remodel Housing w/ Bracket		150W max.	Includes Romex Strain Relief
NHRIC-17QNBAT	6" ICAT Line Voltage Remodel Housing w/o Bracket			
NHR-26Q	6" Non-IC Air-Tight Line Voltage Remodel Housing		75W max.	
NHRIC-27QAT	6" Shallow IC Air-Tight Line Voltage Remodel Housing			Includes Romex Strain Relief
NHR-27Q	6" Shallow Non-IC Line Voltage Remodel Housing			
NLIC-601	6" IC Air-Tight Low Voltage New Construction Housing	GU5.3	50W MR16 max.	
NL-601	6" Non-IC Air-Tight Low Voltage New Construction Housing		75W MR16 max.	
NLR-604	6" Non-IC Air-Tight Low Voltage Remodel Housing			
NFBIC-6LMRATA	6" 2-Hour Fire Rated LED Dedicated New Construction Housing	LED	17.5W max.	
NHIC-6LMRAT	6" IC Air-Tight LED Dedicated New Construction Housing			Includes Romex Strain Relief & Hinged Junction Box Door
NHIC-27LMRAT	6" Shallow ICAT LED Dedicated New Construction Housing			Includes Romex Strain Relief
NHICCP-6LMRAT	6" Chicago Plenum LED Dedicated New Construction Housing			
NHRIC-6LMRAT	6" IC Air-Tight LED Dedicated Remodel Housing			
NHRIC-27LMRAT	6" Shallow IC Air-Tight LED Dedicated Remodel Housing			
NHIC-926DWQAT	6" Sloped IC Air-Tight Line Voltage New Construction Housing	Medium Base	100W max.	
NHIC-926QAT	6" Sloped IC Air-Tight Line Voltage New Construction Housing		75W max.	Includes Romex Strain Relief
NHRIC-926QAT	6" Sloped IC Air-Tight Line Voltage Remodel Housing			
NHIC-928QAT	6" Super Sloped ICAT Line Voltage New Construction Housing			
NHRIC-928QAT	6" Super Sloped ICAT Line Voltage Remodel Housing			
NHIC-926LMRAT	6" Sloped ICAT LED Dedicated New Construction Housing	LED	17.5W max.	Includes Romex Strain Relief
NHRIC-926LMRAT	6" Sloped IC Air-Tight LED Dedicated Remodel Housing			
NHIC-928LMRAT	6" Super Sloped ICAT LED New Construction Housing			
NHRIC-928LMRAT	6" Super Sloped ICAT LED Dedicated Remodel Housing			
NHIC-6624ATFL	6" IC Air-Tight GU24 New Construction Housing	GU24	26W max.	Includes Romex Strain Relief