

NPR-4RTLA

4" Pearl 120V LED Round Trimless Adjustable Retrofit

Source: 10W LED
1150lm

PRODUCT DESCRIPTION

4" Trimless Pearl retrofit series is cULus classified for use in existing IC or Non-IC housings manufactured by Nora and others. Each luminaire requires a trimless mud ring and will have no exposed trim flange or extend beyond the ceiling plane. Regressed cone reflector optimizes visual cut-off and adjust up to 35°.

FEATURES

- Medium base socket adapter included
- Retrofit existing 4" or 6" recessed housings
- Comfort Dim (warm dimming) is available in 700lm only
- 2700K, 3000K, 3500K, 4000K @ 90+ CRI
- Three field changeable optics included
- Integral dimmable driver
- 5-year limited warranty

SPECIFICATION

Construction: Trims are constructed of heat-dissipating die-cast aluminum. A threaded aluminum LED heat sink integrates directly with the trim for optimal heat transfer, while a heat-resistant polycarbonate blend plate enhances overall temperature control and performance.

Mounting: Luminaire includes stainless steel friction clips to mount securely to trimless mud ring. Mud ring is required per trimless downlight.

OPTICS

Three field changeable optics (spot, narrow flood and flood - installed) are included with each LED module. Premium 22° and 26° TIR optics are also available.

ELECTRICAL

Input Voltage: 120VAC

Lumens / Wattage: 1150lm / 10W (700lm w/ Comfort Dim)

Color Temperature: 2700K, 3000K, 3500K, 4000K

Color Rendering Index: 90+CRI

Beam Spread: 25° Spot, 36° Narrow Flood, 63° Flood

Operating Temperature: Specified by housing

Lifetime: 50,000 hours @ L70

Comfort Dim: Comfort Dim color tunes the temperature from a bright 3000K, to a romantic and comfortable 2000K on a gradual, even curve. Available in 700lm only.

Dimming: Triac (leading edge) or ELV (trailing edge)

[Click Here](#) or check complete dimmer list at

www.NoraLighting.com in the "Compatibility" page under "Resources" tab

COMPATIBLE HOUSINGS

Pearl retrofits are compatible with most 4" (NPR-TLMR-4R) and 6" (NPR-TLMR-6R) housings by Nora and others.

- [NSIC-4LMRAT*](#) 4" Max. Adjustability ICAT Dedicated LED
- [NHIC-4LMRAT*](#) 4" ICAT Dedicated LED
- [NHIC-4LMRAT/277*](#)¹ 4" ICAT Dedicated LED, 277V (includes step-down transformer)
- [NHICCP-4LMRAT*](#) 4" CCEA Dedicated LED
- [NSIC-4010AT](#) 4" ICAT Line Voltage
- [NS-4010AT](#) 4" AT Line Voltage
- [NHIC-4G24AT](#) 4" ICAT GU24
- [NHIC-6LMRAT*](#) 6" ICAT Dedicated LED
- [NHIC-6LMRAT/277*](#)¹ 6" ICAT Dedicated LED, 277V
- [NHICCP-6LMRAT*](#) 6" Chicago Plenum Dedicated LED
- [NHIC-27LMRAT*](#) 6" ICAT Shallow Dedicated LED
- [NHIC-170AT](#) 6" ICAT Line Voltage
- [NHIC-170NBAT](#) 6" ICAT Line Voltage (No Bracket)
- [NHIC-270AT](#) 6" ICAT Shallow Line Voltage
- [NH-26Q](#) 6" Line Voltage
- [NH-27Q](#) 6" Shallow Line Voltage
- [NHIC-6G24ATFL](#) 6" ICAT GU24

* Nora Dedicated LED housings are cULus listed for use only with Nora LED Retrofits.

¹ Housings include a step down transformer.

Retrofit: A medium base screw-socket adapter is included for retrofitting into existing housings. Medium base sockets may require removal, dependent on trim and housing height. A GU24 socket adapter is also available, ordered separately (NRA-212SM).

Accessories: Luminaires can accommodate (1) hex louver and (1) translucent deco collar or opaque snoot, no accessory holder is required, see accessories page. A mud ring is required per trimless.

LABELS AND LISTINGS

- cULus Listed for Damp Locations
- [5-Year Limited Warranty](#)
- RoHS Compliant
- Certified to the requirements of CA Title 24 JA8-2025
- Patent Pending



Type

Project

Catalog No.

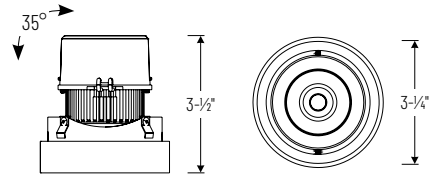
Notes

Performance Data

Part Number	Lumens	CCT	Optic
NPR-4RTLA40XMPW	1184lm	4000K	Spot
NPR-4RTLA40XMPW	1190lm	4000K	Narrow
NPR-4RTLA40XMPW	1186lm	4000K	Flood

Delivered lumens will vary depending on CCT, optic and finish

PRODUCT IMAGES AND DIMENSIONS



NPR-4RTLA

Round Trimless Adjustable Retrofit
Adjustability: 35°



BB

Black Adjustable
Black Reflector



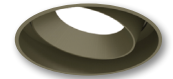
BW

Black Adjustable
Warm White Reflector



BZ

Bronze Adjustable
Bronze Reflector



CH

Champagne Haze Adjustable
Champagne Haze Reflector



CHMPW

Champagne Haze Adjustable
Bright White Reflector



HW

Haze Adjustable
Warm White Reflector



HZ

Haze Adjustable
Haze Reflector



HZMPW

Haze Adjustable
Bright White Reflector



MPW

Bright White Adjustable
Bright White Reflector



WW

Warm White Adjustable
Warm White Reflector

4" Pearl LED Round Trimless Adjustable Retrofit

Color Temperature	Finish
NPR-4RTLA27X = 2700K	BB = Black
NPR-4RTLA30X = 3000K	BW = Black Adjustable / Warm White Reflector
NPR-4RTLA35X = 3500K	BZ = Bronze
NPR-4RTLA40X = 4000K	CH = Champagne Haze
NPR-4RTLACDX = Comfort Dim	CHMPW = Champagne Haze Adjustable / Bright White Reflector
	HW = Haze Adjustable / Warm White Reflector
	HZ = Haze
	HZMPW = Haze Adjustable / Bright White Reflector
	MPW = Bright White
	WW = Warm White

Pearl Trimless Mud Rings

Description

NPR-TLMR-4R = Trimless Mud Ring for 4" Recessed Housings

NPR-TLMR-6R = Trimless Mud Ring for 6" Recessed Housings

Example: **NPR-4RTLA40XMPW / NPR-TLMR-4R** = 4" Pearl LED Round Trimless Adjustable Retrofit, 4000K, Bright White finish / Trimless Mud Ring for 4" Recessed Housings

ACCESSORIES

4" Pearl 120V LED Round Trimless Adjustable Retrofit

Type

Project

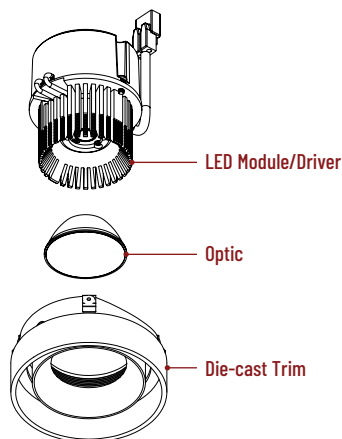
Catalog No.

Notes

FIELD CHANGEABLE OPTICS

Pearl luminaires include spot, narrow flood and flood optics. Optics can be changed in the field by removing LED module from die-cast trim. Optional frosted and TIR optics are also available.

Note: Premium TIR optics are not compatible with Comfort Dim LED modules.



Frosted Optics

NIO-REFL38FR 60° Optic
NIO-REFL60FR 73° Optic

Replaces optics that are included with each LED module.



Premium TIR Optics

NIO-REFLTIR15 22° Optic
NIO-REFLTIR25 26° Optic

Premium TIR (total internal reflection) optics create optimal spot and narrow flood beam spread.

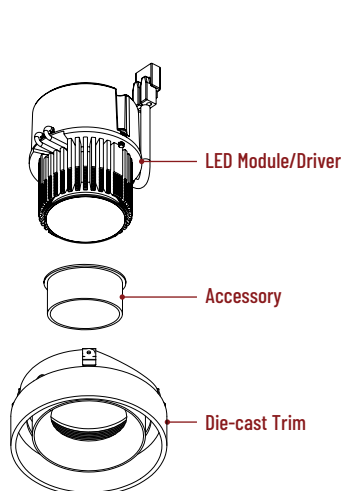
Not compatible with Comfort Dim (CDX) LED module



ACCESSORIES

Pearl accessories can be added at any point in the design process. Accessories easily install between LED module and die-cast trim.

Luminaire will accommodate (1) hex louver and (1) collar accessory, no accessory holder required.



Translucent Decorative Collar

NIO-AS14(color) 5/8" length
NIO-AS19(color) 3/4" length
NIO-AS26(color) 1" length
Color:
AM (amber), BLU (blue), FR (frosted), R (red)

Translucent collars color the aperture with the specified color while producing white general light. Collars are available in different lengths. Use to add interest, create a theme, match a theme or define a space.



Opaque Collar Snoot

NIO-AS14WH 5/8" length / warm white finish
NIO-AS19MPW 3/4" length / bright white finish
NIO-AS19WH 3/4" length / warm white finish
NIO-AS26WH 1" length / warm white finish

Opaque snoot greatly reduces aperture brightness while preserving light output.

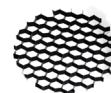


Hex Cell Louver

NIO-HC Black

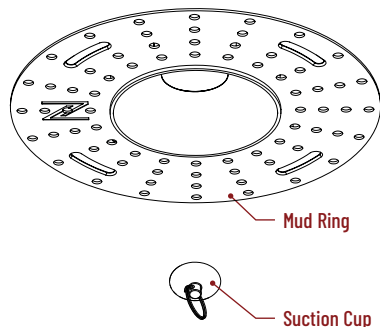
Hex cell louver subtly reduces aperture brightness by reducing light output by about 20%.

Hex cell louver is not compatible with TIR optics.



TRIMLESS

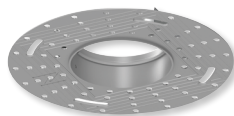
4" Pearl trimless reflectors have no exposed trim flange and the result is a minimalist knife edge appearance. A trimless mud ring is installed after the drywall and a professional drywall finisher floats the ceiling to blend in the mud ring.



Trimless Mud Ring

NPR-TLMR-4R for 4" recessed housings
NPR-TLMR-6R for 6" recessed housings

Mounts trimless reflector with no exposed flange and no extension beyond ceiling plane. Mud ring attaches to drywall.
Diameter: 7.35" (NPR-TLMR-4R) or 8" (NPR-TLMR-6R)
Thickness: 0.05"



Suction Cup for Removal

NIO-TLSUCTION

Assist removing trimless reflector from finished ceiling after installation. For maintenance on trimless reflector.



PHOTOMETRICS

4" Pearl 120V LED Round Trimless Adjustable Retrofit

Type

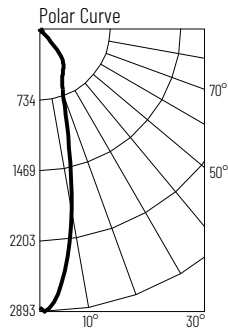
Project

Catalog No.

Notes

Test Information

Test Number: NTR2994R1
Part Number: NPR-4RTLA40XMPW
Beam Spread: 25° Spot
Lumens: 1184lm
Wattage: 9.85W
Efficacy: 120pw
CCT / CRI: 4000K / 90 CRI
Spacing Criteria (0°-180°): 0.44
Spacing Criteria (90°-270°): 0.44



Illuminance at a Distance

Distance from Luminaire	FC at Nadir	Beam Diameter
4'	181fc	1'-10"
6'	80.4fc	2'-8"
8'	45.2fc	3'-7"
10'	28.9fc	4'-6"
12'	20.1fc	5'-5"

Zonal Lumen Summary

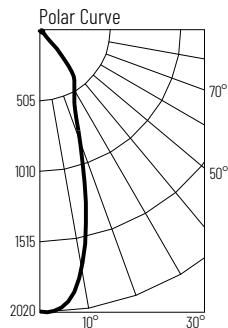
Zone	Lumens	% Luminaire
0-30	811	68.5
0-40	1071	90.5
0-60	1167	98.6
0-90	1184	100
90-180	0	0
0-180	1184	100

Candela Table

Vertical Angles	Candela
0	2893
5	2608
15	1133
25	562
35	433
45	63

Test Information

Test Number: NTR2993R1
Part Number: NPR-4RTLA40XMPW
Beam Spread: 36° Narrow Flood
Lumens: 1190lm
Wattage: 9.85W
Efficacy: 121pw
CCT / CRI: 4000K / 90 CRI
Spacing Criteria (0°-180°): 0.6
Spacing Criteria (90°-270°): 0.6



Illuminance at a Distance

Distance from Luminaire	FC at Nadir	Beam Diameter
4'	126fc	2'-7"
6'	56fc	3'-11"
8'	31.5fc	5'-2"
10'	20.1fc	6'-5"
12'	14fc	7'-8"

Zonal Lumen Summary

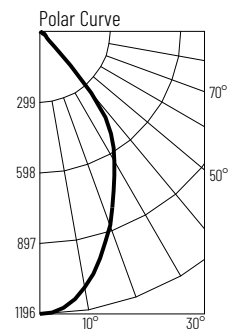
Zone	Lumens	% Luminaire
0-30	812	68.3
0-40	1051	88.3
0-60	1172	98.5
0-90	1190	100
90-180	0	0
0-180	1190	100

Candela Table

Vertical Angles	Candela
0	2015
5	1977
15	1278
25	595
35	429
45	65

Test Information

Test Number: NTR2992R1
Part Number: NPR-4RTLA40XMPW
Beam Spread: 63° Flood
Lumens: 1186lm
Wattage: 9.85W
Efficacy: 120pw
CCT / CRI: 4000K / 90 CRI
Spacing Criteria (0°-180°): 0.88
Spacing Criteria (90°-270°): 0.88



Illuminance at a Distance

Distance from Luminaire	FC at Nadir	Beam Diameter
4'	74.7fc	5"
6'	33.2fc	7'-5"
8'	18.7fc	9'-11"
10'	12fc	12'-5"
12'	8.3fc	14'-11"

Zonal Lumen Summary

Zone	Lumens	% Luminaire
0-30	727	61.3
0-40	1043	88
0-60	1165	98.3
0-90	1186	100
90-180	0	0
0-180	1186	100

Candela Table

Vertical Angles	Candela
0	1196
5	1173
15	994
25	744
35	529
45	91

Lumen Output Multipliers

Color Temperature: 2700K (0.89), 3000K (0.94), 3500K (0.97), 4000K (1.00)

Finish Multipliers

Finish: Black (0.84), Bronze (0.85), Champagne Haze (0.95), Haze (0.95), Bright White (1.00), Warm White (1.03)