

## NPR-4RTSLA

### 4" Pearl LED Round Trimless Adjustable Slot Retrofit

Source: 10W  
1050lm

#### PRODUCT DESCRIPTION

4" Trimless Pearl retrofit series is cULus classified for use in existing IC or Non-IC housings manufactured by Nora and others. Each luminaire requires a trimless mud ring and will have no exposed trim flange or extend beyond the ceiling plane. Regressed cone construction optimizes visual cut-off and adjust up to 35°.

#### FEATURES

- Medium base socket adapter included
- Retrofit existing 4" or 6" recessed housings
- Comfort Dim (warm dimming) is available in 600lm only
- 2700K, 3000K, 3500K, 4000K @ 90+ CRI
- Three field changeable optics included
- Integral dimmable driver
- 5-Year limited warranty

#### SPECIFICATION

**Construction:** Trims are constructed of heat-dissipating die-cast aluminum. A threaded aluminum LED heat sink integrates directly with the trim for optimal heat transfer, while a heat-resistant polycarbonate blend plate enhances overall temperature control and performance.

**Mounting:** Luminaire includes stainless steel friction clips to mount securely to trimless mud ring. Mud ring is required per trimless downlight.

#### OPTICS

Three field changeable optics (spot, narrow flood and flood - installed) are included with each LED module. Premium 22° and 26° TIR optics are also available.

#### ELECTRICAL

**Input Voltage:** 120VAC

**Lumens / Wattage:** 1050lm / 10W (600lm w/ Comfort Dim)

**Color Temperature:** 2700K, 3000K, 3500K, 4000K

**Color Rendering Index:** 90+CRI

**Beam Spread:** 26° Spot, 36° Narrow Flood, 55° Flood

**Operating Temperature:** Specified by housing

**Lifetime:** 50,000 hours @ L70

**Comfort Dim:** Comfort Dim color tunes the temperature from a bright 3000K, to a romantic and comfortable 2000K on a gradual, even curve. Available in 600lm only.

**Dimming:** Triac (leading edge) or ELV (trailing edge)

[Click Here](#) or check complete dimmer list at

[www.NoraLighting.com](http://www.NoraLighting.com) in the "Compatibility" page under "Resources" tab

#### COMPATIBLE HOUSINGS

Pearl retrofits are compatible with most 4" (NPR-TLMR-4R) and 6" (NPR-TLMR-6R) housings by Nora and others.

<a href="#">NSIC-4LMRAT*</a>	4" Max. Adjustability ICAT Dedicated LED
<a href="#">NHIC-4LMRAT*</a>	4" ICAT Dedicated LED
<a href="#">NHIC-4LMRAT/277*</a> <sup>1</sup>	4" ICAT Dedicated LED, 277V (includes step-down transformer)
<a href="#">NHICCP-4LMRAT*</a>	4" CCEA Dedicated LED
<a href="#">NSIC-4010AT</a>	4" ICAT Line Voltage
<a href="#">NS-4010AT</a>	4" AT Line Voltage
<a href="#">NHIC-4G24AT</a>	4" ICAT GU24
<a href="#">NHIC-6LMRAT*</a>	6" ICAT Dedicated LED
<a href="#">NHIC-6LMRAT/277*</a> <sup>1</sup>	6" ICAT Dedicated LED, 277V
<a href="#">NHICCP-6LMRAT*</a>	6" Chicago Plenum Dedicated LED
<a href="#">NHIC-27LMRAT*</a>	6" ICAT Shallow Dedicated LED
<a href="#">NHIC-170AT</a>	6" ICAT Line Voltage
<a href="#">NHIC-170NBAT</a>	6" ICAT Line Voltage (No Bracket)
<a href="#">NHIC-270AT</a>	6" ICAT Shallow Line Voltage
<a href="#">NH-26Q</a>	6" Line Voltage
<a href="#">NH-27Q</a>	6" Shallow Line Voltage
<a href="#">NHIC-6G24ATFL</a>	6" ICAT GU24

\* Nora Dedicated LED housings are cULus listed for use only with Nora LED Retrofits.

<sup>1</sup> Housings include a step down transformer.

**Retrofit:** A medium base screw-socket adapter is included for retrofitting into existing housings. Medium base sockets may require removal, dependent on trim and housing height. A GU24 socket adapter is also available, ordered separately (NRA-212SM).

**Accessories:** Luminaires can accommodate (1) hex louver and (1) translucent deco collar or opaque snoot, no accessory holder is required, see accessories page. A mud ring is required per trimless.

#### LABELS AND LISTINGS

- cULus Listed for Damp Locations
- [5-Year Limited Warranty](#)
- RoHS Compliant
- Certified to the requirements of CA Title 24 JA8-2025
- Patent Pending



#### Type

#### Project

#### Catalog No.

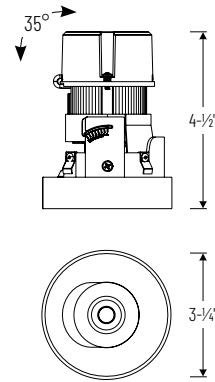
#### Notes

#### Performance Data

Part Number	Lumens	CCT	Optic
<b>NPR-4RTSLA40XMPW</b>	1062lm	3500K	Spot
<b>NPR-4RTSLA40XMPW</b>	1068lm	3500K	Narrow
<b>NPR-4RTSLA40XMPW</b>	1063lm	3500K	Flood

*Delivered lumens will vary depending on CCT, optic and finish*

#### PRODUCT IMAGES AND DIMENSIONS



#### NPR-4RTSLA

Round Trimless Adjustable Slot Retrofit  
Adjustability: 35°



**BB**  
Black



**BZ**  
Bronze



**CH**  
Champagne Haze



**HZ**  
Haze



**MPW**  
Bright White



**WW**  
Warm White

### 4" Pearl LED Round Trimless Adjustable Slot Retrofit

Color Temperature	Finish
<b>NPR-4RTSLA27X</b> = 2700K	<b>BB</b> = Black
<b>NPR-4RTSLA30X</b> = 3000K	<b>BZ</b> = Bronze
<b>NPR-4RTSLA35X</b> = 3500K	<b>CH</b> = Champagne Haze
<b>NPR-4RTSLA40X</b> = 4000K	<b>HZ</b> = Haze
<b>NPR-4RTSLACDX</b> = Comfort Dim	<b>MPW</b> = Bright White
	<b>WW</b> = Warm White

### Pearl Trimless Mud Rings

Description
<b>NPR-TLMR-4R</b> = Trimless Mud Ring for 4" Recessed Housings
<b>NPR-TLMR-6R</b> = Trimless Mud Ring for 6" Recessed Housings

Example: **NPR-4RTSLA40XMPW / NPR-TLMR-4R** = 4" Pearl LED Round Trimless Adjustable Slot Retrofit, 4000K, Bright White finish / Trimless Mud Ring for 4" Recessed Housings

## ACCESSORIES

### 4" Pearl LED Round Trimless Adjustable Slot Retrofit

Type

Project

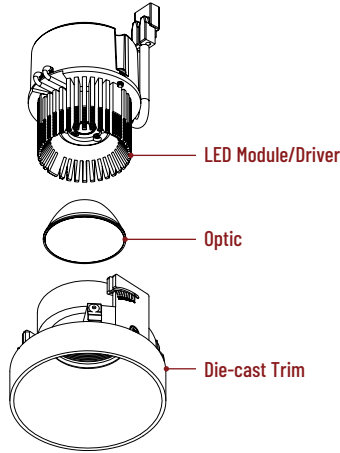
Catalog No.

Notes

#### FIELD CHANGEABLE OPTICS

Pearl luminaires include spot, narrow flood and flood optics. Optics can be changed in the field by removing LED module from die-cast trim. Optional frosted and TIR optics are also available.

**Note:** Premium TIR optics are not compatible with Comfort Dim LED modules.



#### Frosted Optics

NIO-REFL38FR 60° Optic  
NIO-REFL60FR 73° Optic

Replaces optics that are included with each LED module.



#### Premium TIR Optics

NIO-REFLTIR15 22° Optic  
NIO-REFLTIR25 26° Optic

Premium TIR (total internal reflection) optics create optimal spot and narrow flood beam spread.

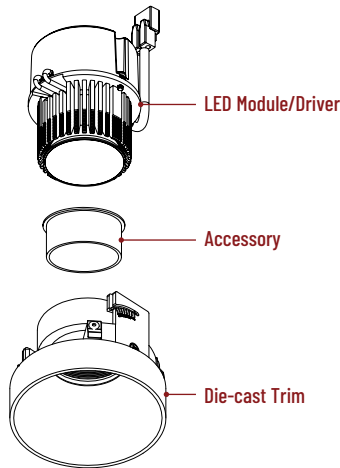
**Not compatible with Comfort Dim (CDX) LED module**



#### ACCESSORIES

Pearl accessories can be added at any point in the design process. Accessories easily install between LED module and die-cast trim.

Luminaire will accommodate (1) hex louver and (1) collar accessory, no accessory holder required.



#### Translucent Decorative Collar

NIO-AS14(color) 5/8" length  
NIO-AS19(color) 3/4" length  
NIO-AS26(color) 1" length  
**Color:**  
AM (amber), BLU (blue), FR (frosted), R (red)

Translucent collars color the aperture with the specified color while producing white general light. Collars are available in different lengths. Use to add interest, create a theme, match a theme or define a space.



#### Opaque Collar Snoot

NIO-AS14WH 5/8" length / warm white finish  
NIO-AS19MPW 3/4" length / bright white finish  
NIO-AS19WH 3/4" length / warm white finish  
NIO-AS26WH 1" length / warm white finish

Opaque snoot greatly reduces aperture brightness while preserving light output.



#### Hex Cell Louver

NIO-HC Black

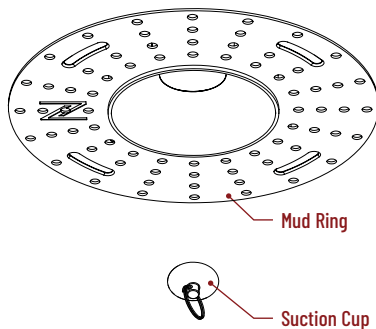
Hex cell louver subtly reduces aperture brightness by reducing light output by about 20%.

Hex cell louver is not compatible with TIR optics.



#### TRIMLESS

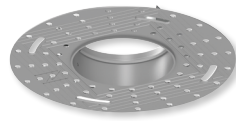
4" Pearl trimless reflectors have no exposed trim flange and the result is a minimalist knife edge appearance. A trimless mount mud ring is installed after the drywall and a professional drywall finisher floats the ceiling to blend in the mud ring.



#### Trimless Mount Mud Ring

NPR-TLMR-4R for 4" recessed housings  
NPR-TLMR-6R for 6" recessed housings

Mounts trimless reflector with no exposed flange and no extension beyond ceiling plane. Mud ring attaches to drywall.  
Diameter: 7.35" (NPR-TLMR-4R) or 8" (NPR-TLMR-6R)  
Thickness: 0.05"



#### Suction Cup for Removal

NIO-TLSUCTION

Assist removing trimless reflector from finished ceiling after installation. For maintenance on trimless reflector.



# PHOTOMETRICS

## 4" Pearl LED Round Trimless Adjustable Slot Retrofit

Type

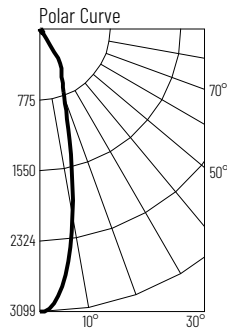
Project

Catalog No.

Notes

### Test Information

Test Number: NTR2799R1  
Part Number: NPR-4RTSLA40XMPW  
Beam Spread: 26° Spot  
Lumens: 1062lm  
Wattage: 9.85W  
Efficacy: 108pw  
CCT / CRI: 4000K / 90 CRI  
Spacing Criteria (0°-180°): 0.46  
Spacing Criteria (90°-270°): 0.46



### Illuminance at a Distance

Distance from Luminaire	FC at Nadir	Beam Diameter
4'	194fc	1'-11"
6'	86.1fc	2'-10"
8'	40.1fc	3'-10"
10'	25.6fc	4'-8"
12'	17.8fc	5'-7"

### Zonal Lumen Summary

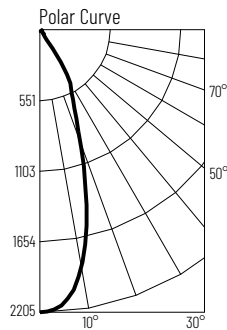
Zone	Lumens	% Luminaire
0-30	875	82.4
0-40	994	93.6
0-60	1043	98.3
0-90	1062	100
90-180	0	0
0-180	1062	100

### Candela Table

Vertical Angles	Candela
0	3099
5	2835
15	1270
25	578
35	136
45	39

### Test Information

Test Number: NTR2795R1  
Part Number: NPR-4RTSLA40XMPW  
Beam Spread: 36° Narrow Flood  
Lumens: 1068lm  
Wattage: 9.85W  
Efficacy: 108pw  
CCT / CRI: 4000K / 90 CRI  
Spacing Criteria (0°-180°): 0.6  
Spacing Criteria (90°-270°): 0.6



### Illuminance at a Distance

Distance from Luminaire	FC at Nadir	Beam Diameter
4'	138fc	2'-7"
6'	61.3fc	3'-11"
8'	34.5fc	5'-2"
10'	22.1fc	6'-7"
12'	15.3fc	7'-11"

### Zonal Lumen Summary

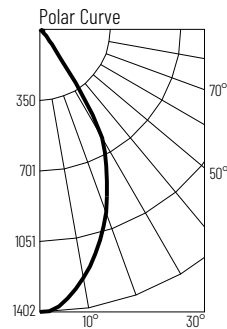
Zone	Lumens	% Luminaire
0-30	879	82.3
0-40	996	93.2
0-60	1049	98.2
0-90	1068	100
90-180	0	0
0-180	1068	100

### Candela Table

Vertical Angles	Candela
0	2205
5	2145
15	1418
25	626
35	151
45	40

### Test Information

Test Number: NTR2791R1  
Part Number: NPR-4RTSLA40XMPW  
Beam Spread: 55° Flood  
Lumens: 1063lm  
Wattage: 9.85W  
Efficacy: 108pw  
CCT / CRI: 4000K / 90 CRI  
Spacing Criteria (0°-180°): 0.84  
Spacing Criteria (90°-270°): 0.84



### Illuminance at a Distance

Distance from Luminaire	FC at Nadir	Beam Diameter
4'	87.6fc	4'-2"
6'	38.9fc	6'-4"
8'	21.9fc	8'-5"
10'	14fc	10'-6"
12'	9.7fc	12'-6"

### Zonal Lumen Summary

Zone	Lumens	% Luminaire
0-30	799	75.1
0-40	978	92
0-60	1041	97.9
0-90	1063	100
90-180	0	0
0-180	1063	100

### Candela Table

Vertical Angles	Candela
0	1402
5	1359
15	1118
25	787
35	251
45	49

### Lumen Output Multipliers

Color Temperature: 2700K (0.89), 3000K (0.94), 3500K (0.98), 4000K (1.00)

### Finish Multipliers

Finish: Black (0.89), Bronze (0.85), Champagne Haze (0.95), Haze (0.95), Bright White (1.00), Warm White (1.03)