

# NPRLV-4RTLA

## 4" Pearl 12VAC Low Voltage LED Round Trimless Adjustable Retrofit

Source: 10W LED  
1150lm

### PRODUCT DESCRIPTION

Pearl low voltage retrofit series is cULus classified for use in existing IC or Non-IC housings manufactured by Nora and others. Each luminaire requires a trimless mud ring and will have no exposed trim flange or extend beyond the ceiling plane. Regressed cone reflector optimizes visual cut-off and adjust up to 35°.

### FEATURES

- Retrofit existing 4" or 6" recessed housings
- 2700K, 3000K, 3500K, 4000K @ 90+ CRI
- Field changeable optics included (Spot, Narrow Flood and Flood - installed)
- Integral dimmable driver
- 5-year limited warranty

### SPECIFICATION

**Construction:** Trims are constructed of heat-dissipating die-cast aluminum. A threaded aluminum LED heat sink integrates directly with the trim for optimal heat transfer, while a heat-resistant polycarbonate blend plate enhances overall temperature control and performance.

**Mounting:** Luminaire includes stainless steel friction clips to mount securely to trimless mud ring. Mud ring is required per trimless downlight.

**Optics:** Three field changeable optics (spot, narrow flood and flood) are included with each LED module. Premium 22° and 26° TIR optics are also available.

### ELECTRICAL

**Input Voltage:** 12VAC 60Hz

**Socket:** GU5.3

**Lumens / Wattage:** 1150lm / 10W

**Color Temperature:** 2700K, 3000K, 3500K, 4000K

**Color Rendering Index:** 90+CRI

**Beam Spread:** 25° Spot, 36° Narrow Flood, 63° Flood

**Operating Temperature:** 0°C to 25°C

**Lifetime:** 50,000 hours @ L70

**Dimming:** Triac (leading edge) or ELV (trailing edge)

[Click Here](#) or check complete dimmer list at [www.NoraLighting.com](http://www.NoraLighting.com) in the "Compatibility" page under "Resources" tab

### COMPATIBLE HOUSINGS

Pearl retrofits are compatible with most 4" ([NPR-TLMR-4R](#)) and 6" ([NPR-TLMR-6R](#)) housings by Nora and others.

[NLIC-401](#) 4" IC Air-Tight Double Wall New Construction

[NL-401](#) 4" Non-IC New Construction

[NLIC-601](#) 6" IC Air-Tight Double Wall New Construction

[NL-601](#) 6" Non-IC New Construction

**Accessories:** Luminaires can accommodate (1) hex louver and (1) translucent deco collar or opaque snoot, no accessory holder is required, see accessories page. A mud ring is required per trimless.

### LABELS AND LISTINGS

- cULus classified for Damp Locations
- [5-Year Limited Warranty](#)
- RoHS compliant
- Certified to the requirements of CA Title 24 JA8-2025
- Patent Pending



## 4" Pearl 12VAC Low Voltage LED Round Trimless Adjustable Retrofit

Color Temperature	Finish
NPRLV-4RTLA27X = 2700K	BB = Black
NPRLV-4RTLA30X = 3000K	BW = Black Adjustable / Warm White Reflector
NPRLV-4RTLA35X = 3500K	BZ = Bronze
NPRLV-4RTLA40X = 4000K	CH = Champagne Haze
	CHMPW = Champagne Haze Adjustable / Bright White Reflector
	HW = Haze Adjustable / Warm White Reflector
	HZ = Haze
	HZMPW = Haze Adjustable / Bright White Reflector
	MPW = Bright White
	WW = Warm White

Type

Project

Catalog No.

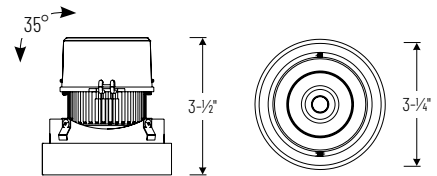
Notes

### Performance Data

Part Number	Lumens	CCT	Optic
NPRLV-4RTLA40XMPW	1184lm	4000K	Spot
NPRLV-4RTLA40XMPW	1190lm	4000K	Narrow
NPRLV-4RTLA40XMPW	1186lm	4000K	Flood

Delivered lumens will vary depending on CCT, optic and finish

### PRODUCT IMAGES AND DIMENSIONS



### NPRLV-4RTLA

Round Trimless Adjustable Retrofit

Adjustability: 35°



### BB

Black Adjustable  
Black Reflector



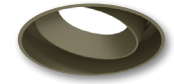
### BW

Black Adjustable  
Warm White Reflector



### BZ

Bronze Adjustable  
Bronze Reflector



### CH

Champagne Haze Adjustable  
Champagne Haze Reflector



### CHMPW

Champagne Haze Adjustable  
Bright White Reflector



### HW

Haze Adjustable  
Warm White Reflector



### HZ

Haze Adjustable  
Haze Reflector



### HZMPW

Haze Adjustable  
Bright White Reflector



### MPW

Bright White Adjustable  
Bright White Reflector



### WW

Warm White Adjustable  
Warm White Reflector

### Pearl Trimless Mud Rings

#### Description

NPRLV-4RTLA40XMPW = 4" Pearl 12VAC Low Voltage LED Round Trimless Adjustable Retrofit, 4000K, Bright White finish

NPR-TLMR-4R = Trimless Mud Ring for 4" Recessed Housings

NPR-TLMR-6R = Trimless Mud Ring for 6" Recessed Housings

Example: NPRLV-4RTLA40XMPW = 4" Pearl 12VAC Low Voltage LED Round Trimless Adjustable Retrofit, 4000K, Bright White finish

## ACCESSORIES

### 4" Pearl 12VAC Low Voltage LED Round Trimless Adjustable Retrofit

Type

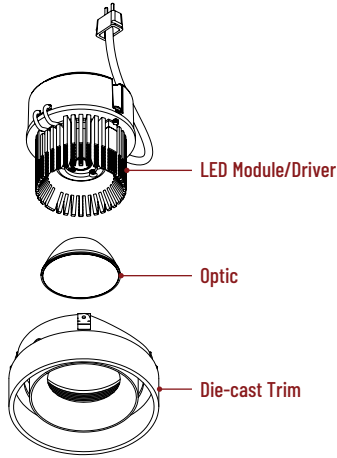
Project

Catalog No.

Notes

#### FIELD CHANGEABLE OPTICS

Pearl luminaires include spot, narrow flood and flood optics. Optics can be changed in the field by removing LED module from die-cast trim. Optional frosted and TIR optics are also available.



Frosted Optics

**NIO-REFL38FR** 60° Optic  
**NIO-REFL60FR** 73° Optic

Replaces optics that are included with each LED module.



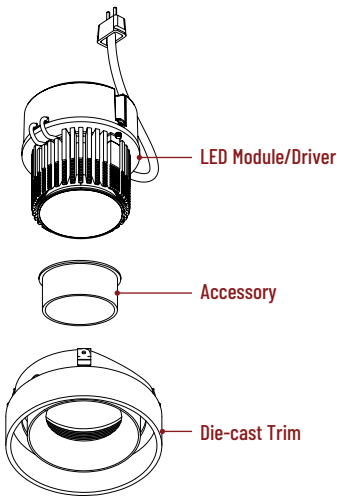
Premium TIR Optics

**NIO-REFLTIR15** 22° Optic  
**NIO-REFLTIR25** 26° Optic

Premium TIR (total internal reflection) optics create optimal spot and narrow flood beam spread.

#### ACCESSORIES

Pearl accessories can be added at any point in the design process. Accessories easily install between LED module and die-cast trim. Luminaire will accommodate (1) hex louver and (1) collar accessory, no accessory holder required.



Translucent Decorative Collar

**NIO-AS14(color)** 5/8" length  
**NIO-AS19(color)** 3/4" length  
**NIO-AS26(color)** 1" length  
**Color:**  
**AM** (amber), **BLU** (blue), **FR** (frosted), **R** (red)

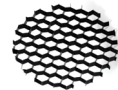
Translucent collars color the aperture with the specified color while producing white general light. Collars are available in different lengths. Use to add interest, create a theme, match a theme or define a space.



Opaque Collar Snoot

**NIO-AS14WH** 5/8" length / warm white finish  
**NIO-AS19MPW** 3/4" length / bright white finish  
**NIO-AS19WH** 3/4" length / warm white finish  
**NIO-AS26WH** 1" length / warm white finish

Opaque snoot greatly reduces aperture brightness while preserving light output.



Hex Cell Louver

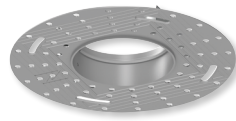
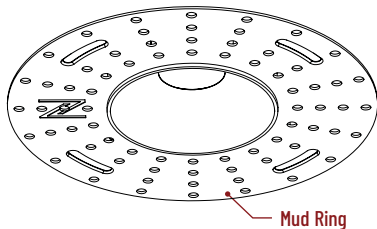
**NIO-HC** Black

Hex cell louver subtly reduces aperture brightness by reducing light output by about 20%.

Hex cell louver is not compatible with TIR optics.

#### TRIMLESS

4" Pearl trimless reflectors have no exposed trim flange and the result is a minimalist knife edge appearance. A trimless mount mud ring is installed after the drywall and a professional drywall finisher floats the ceiling to blend in the mud ring.



Trimless Mount Mud Ring

**NPR-TLMR-4R** for 4" recessed housings  
**NPR-TLMR-6R** for 6" recessed housings

Mounts trimless reflector with no exposed flange and no extension beyond ceiling plane. Mud ring attaches to drywall.  
Diameter: 7.35" (NPR-TLMR-4R) or 8" (NPR-TLMR-6R)  
Thickness: 0.05"



Suction Cup for Removal

**NIO-TLSUCTION**

Assist removing trimless reflector from finished ceiling after installation. For maintenance on trimless reflector.