

NPRLV-4RTSLA

4" Pearl 12VAC Low Voltage LED Round Trimless Adjustable Slot Retrofit

Source: 10W LED
1050lm

Type
Project
Catalog No.
Notes

PRODUCT DESCRIPTION

Pearl low voltage retrofit series is cULus classified for use in existing IC or Non-IC housings manufactured by Nora and others. Each luminaire requires a trimless mud ring and will have no exposed trim flange or extend beyond the ceiling plane. Regressed cone reflector optimizes visual cut-off and adjust up to 35°.

FEATURES

- Retrofit existing 4" or 6" recessed housings
- 2700K, 3000K, 3500K, 4000K @ 90+ CRI
- Three field changeable optics included
- Integral dimmable driver
- 5-year limited warranty

SPECIFICATION

Construction: Trims are constructed of heat-dissipating die-cast aluminum. A threaded aluminum LED heat sink integrates directly with the trim for optimal heat transfer, while a heat-resistant polycarbonate blend plate enhances overall temperature control and performance.

Mounting: Luminaire includes stainless steel friction clips to mount securely to trimless mud ring. Mud ring is required per trimless downlight.

OPTICS

Three field changeable optics (spot, narrow flood and flood - installed) are included with each LED module. Premium 22° and 26° TIR optics are also available.

ELECTRICAL

Input Voltage: 12VAC 60Hz
Socket: GU5.3
Lumens / Wattage: 1050lm / 10W
Color Temperature: 2700K, 3000K, 3500K, 4000K
Color Rendering Index: 90+CRI
Beam Spread: 26° Spot, 36° Narrow Flood, 55° Flood
Operating Temperature: 0°C to 25°C
Lifetime: 50,000 hours @ L70
Dimming: Triac (leading edge) or ELV (trailing edge)
[Click Here](#) or check complete dimmer list at [www.NoraLighting.com](#) in the "Compatibility" page under "Resources" tab

COMPATIBLE HOUSINGS

Pearl retrofits are compatible with most 4" ([NPR-TLMR-4R](#)) and 6" ([NPR-TLMR-6R](#)) housings by Nora and others.

- [NLIC-401](#) 4" IC Air-Tight Double Wall New Construction
- [NL-401](#) 4" Non-IC New Construction
- [NLIC-601](#) 6" IC Air-Tight Double Wall New Construction
- [NL-601](#) 6" Non-IC New Construction

Accessories: Luminaires can accommodate (1) hex louver and (1) translucent deco collar or opaque snoot, no accessory holder is required, see accessories page. A mud ring is required per trimless.

LABELS AND LISTINGS

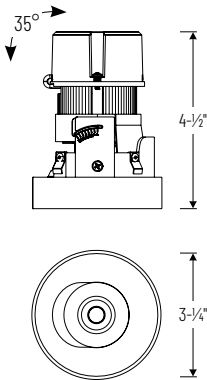
- cULus classified for Damp Locations
- [5-Year Limited Warranty](#)
- RoHS compliant
- Certified to the requirements of CA Title 24 JA8-2025
- Patent Pending



Performance Data			
Part Number	Lumens	CCT	Optic
NPRLV-4RTSLA40XMPW	1062lm	3500K	Spot
NPRLV-4RTSLA40XMPW	1068lm	3500K	Narrow
NPRLV-4RTSLA40XMPW	1063lm	3500K	Flood

Delivered lumens will vary depending on CCT, optic and finish

PRODUCT IMAGES AND DIMENSIONS



NPRLV-4RTSLA
Round Trimless Adjustable Slot Retrofit
Adjustability: 35°



4" Pearl 12VAC Low Voltage LED Round Trimless Adjustable Slot Retrofit

Color Temperature	Finish
NPRLV-4RTSLA27X = 2700K	BB = Black
NPRLV-4RTSLA30X = 3000K	BZ = Bronze
NPRLV-4RTSLA35X = 3500K	CH = Champagne Haze
NPRLV-4RTSLA40X = 4000K	HZ = Haze
	MPW = Bright White
	WW = Warm White

Pearl Trimless Mud Rings

Description
NPR-TLMR-4R = Trimless Mud Ring for 4" Recessed Housings
NPR-TLMR-6R = Trimless Mud Ring for 6" Recessed Housings

Example: NPRLV-4RTSLA40XMPW = 4" Pearl 12VAC Low Voltage LED Round Trimless Adjustable Slot Retrofit, 4000K, Bright White finish

ACCESSORIES

4" Pearl 12VAC Low Voltage LED Round Trimless Adjustable Slot Retrofit

Type

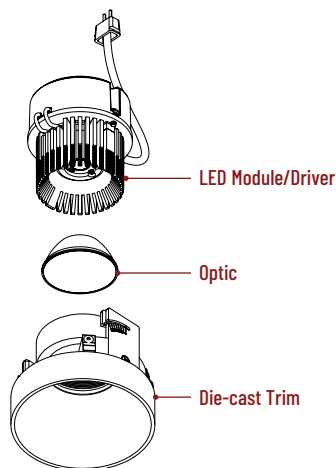
Project

Catalog No.

Notes

FIELD CHANGEABLE OPTICS

Pearl luminaires include spot, narrow flood and flood optics. Optics can be changed in the field by removing LED module from die-cast trim. Optional frosted and TIR optics are also available.



Frosted Optics

NIO-REFL38FR 60° Optic
NIO-REFL60FR 73° Optic

Replaces optics that are included with each LED module.



Premium TIR Optics

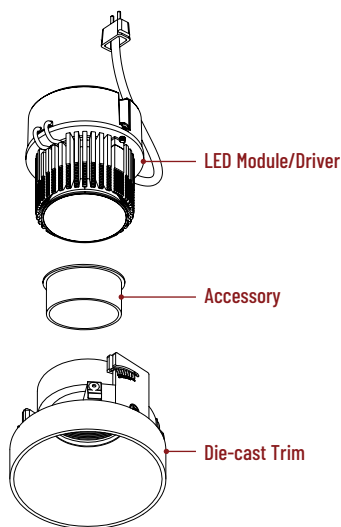
NIO-REFLTIR15 22° Optic
NIO-REFLTIR25 26° Optic

Premium TIR (total internal reflection) optics create optimal spot and narrow flood beam spread.



ACCESSORIES

Pearl accessories can be added at any point in the design process. Accessories easily install between LED module and die-cast trim. Luminaire will accommodate (1) hex louver and (1) collar accessory, no accessory holder required.



Translucent Decorative Collar

NIO-AS14(color) 5/8" length
NIO-AS19(color) 3/4" length
NIO-AS26(color) 1" length
Color:
AM (amber), BLU (blue), FR (frosted), R (red)

Translucent collars color the aperture with the specified color while producing white general light. Collars are available in different lengths. Use to add interest, create a theme, match a theme or define a space.



Opaque Collar Snoot

NIO-AS14WH 5/8" length / warm white finish
NIO-AS19MPW 3/4" length / bright white finish
NIO-AS19WH 3/4" length / warm white finish
NIO-AS26WH 1" length / warm white finish

Opaque snoot greatly reduces aperture brightness while preserving light output.

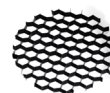


Hex Cell Louver

NIO-HC Black

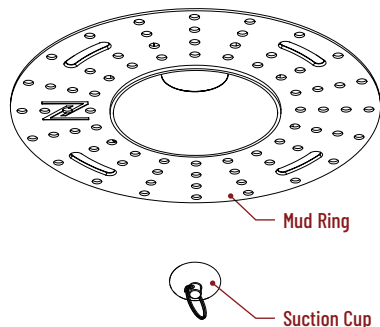
Hex cell louver subtly reduces aperture brightness by reducing light output by about 20%.

Hex cell louver is not compatible with TIR optics.



TRIMLESS

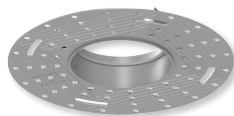
4" Pearl trimless reflectors have no exposed trim flange and the result is a minimalist knife edge appearance. A trimless mount mud ring is installed after the drywall and a professional drywall finisher floats the ceiling to blend in the mud ring.



Trimless Mount Mud Ring

NPR-TLMR-4R for 4" recessed housings
NPR-TLMR-6R for 6" recessed housings

Mounts trimless reflector with no exposed flange and no extension beyond ceiling plane. Mud ring attaches to drywall.
Diameter: 7.35" (NPR-TLMR-4R) or 8" (NPR-TLMR-6R)
Thickness: 0.05"



Suction Cup for Removal

NIO-TLSUCTION

Assist removing trimless reflector from finished ceiling after installation. For maintenance on trimless reflector.

