

NQZ2-4R-F

New Construction Frame-In with Junction Box for NQZ2-41TWTW

Type
Project
Catalog No.
Notes

PRODUCT DESCRIPTION

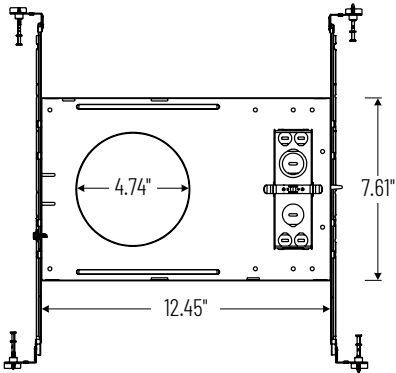
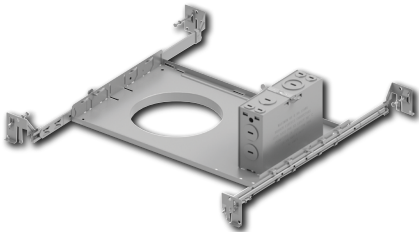
New construction frame-in with collar can be used to assist installing can-less downlights.

Mounting: Bar hangers are adjustable from 13-¾" to 26" with integral nails. Bar hangers are slotted for T-bar ceiling grids.

COMPATIBLE LUMINAIRE

[NQZ2-41TWTW](#): 4" Quartz Round Can-less LED Downlight

PRODUCT IMAGES AND DIMENSIONS



New Construction Frame-In with Junction Box for 4" Quartz Round Downlights

Description
NQZ2-4R-F = New Construction Frame-In with Junction Box for NQZ2-41TWTW

Example: NQZ2-4R-F = New Construction Frame-In with Junction Box