

NQZ2-6R-F

New Construction Frame-In with Junction Box for 6" Can-less Downlights

Type	
Project	
Catalog No.	
Notes	

PRODUCT DESCRIPTION

New construction frame-in with collar can be used to assist installing can-less downlights.

Mounting: Bar hangers are adjustable from 13-3/4" to 26" with integral nails. Bar hangers are slotted for T-bar ceiling grids.

COMPATIBLE LUMINAIRES

[NCSC-R6W2TWMPW](#): 6" Contractor Series Can-less Wafer Downlight with Regressed Baffle

[NEFLINTW-R6MPW](#): 6" FLIN Wafer LED Downlight with Selectable CCT

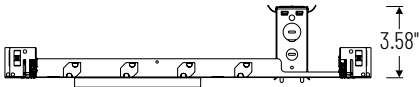
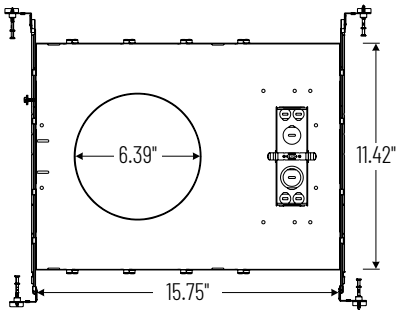
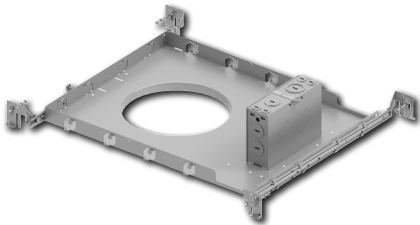
[NFLAT-R6TW](#): 6" FLIN Wafer LED Downlight with Selectable CCT

[NFLINA-R6TW](#): 6" FLIN Adjustable LED Downlight with Selectable CCT

[NLTH-6ITW](#): 6" Theia LED Downlight with Selectable CCT

[NQZ2-6ITWTW-MPW](#): 6" Quartz LED Downlight with Selectable Lumens & CCT

PRODUCT IMAGES AND DIMENSIONS



New Construction Frame-In with Junction Box and Collar

Description
NQZ2-6R-F = New Construction Frame-In with Junction Box and Collar

Example: NQZ2-6R-F = New Construction Frame-In with Junction Box and Collar