

NQZ2-6S-F

New Construction Frame-In with Junction Box for 6" Quartz Square Downlights

Type	
Project	
Catalog No.	
Notes	

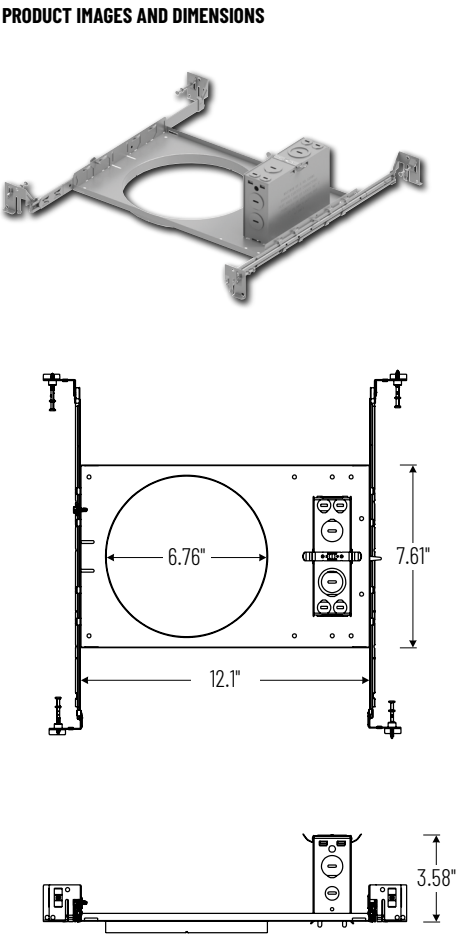
PRODUCT DESCRIPTION

New construction frame-in with collar can be used to assist installing can-less downlights.

Mounting: Bar hangers are adjustable from 13-¾" to 26" with integral nails. Bar hangers are slotted for T-bar ceiling grids.

COMPATIBLE LUMINAIRE

[NQZ2-66TWTW](#): 68" Quartz Square Can-less LED Downlight



New Construction Frame-In with Junction Box for 6" Quartz Square Downlights

Description
NQZ2-6S-F = New Construction Frame-In with Junction Box for NQZ2-66TWTW

Example: NQZ2-6S-F = New Construction Frame-In with Junction Box