

NQZ2-8R-F

New Construction Frame-In with Junction Box for 8" Quartz Round Downlights

Type	
Project	
Catalog No.	
Notes	

PRODUCT DESCRIPTION

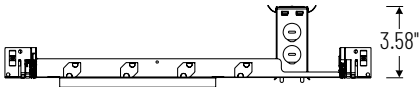
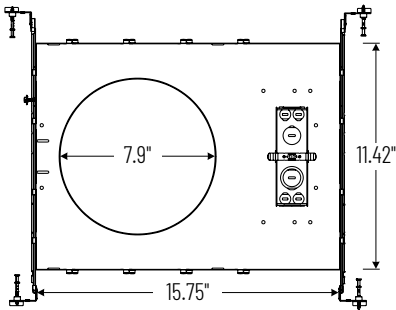
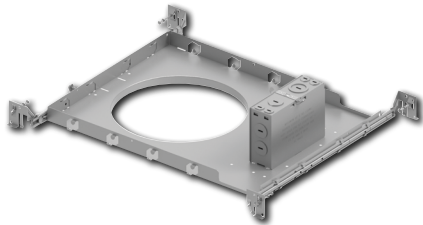
New construction frame-in with collar can be used to assist installing can-less downlights.

**Mounting:** Bar hangers are adjustable from 13-¾" to 26" with integral nails. Bar hangers are slotted for T-bar ceiling grids.

COMPATIBLE LUMINAIRE

[NQZ2-81TWTW](#): 8" Quartz Round Can-less LED Downlight

PRODUCT IMAGES AND DIMENSIONS



New Construction Frame-In with Junction Box for 8" Quartz Round Downlights

Description
NQZ2-8R-F = New Construction Frame-In with Junction Box for NQZ2-81TWTW

Example: NQZ2-8R-F = New Construction Frame-In with Junction Box