



# PRODUCT PREVIEW

1<sup>ST</sup> Quarter 2026





## **Large enough to do it right, Small enough to care.**

For more than three decades, Nora Lighting has been a trusted name in the lighting industry—known as a family-run company with an unwavering commitment to quality, service, and innovation. Founded in Los Angeles, we've grown from a small regional operation into a nationally recognized brand offering a comprehensive portfolio of lighting solutions for residential applications, commercial projects, and facilities that support some of the nation's largest chains. Our success is rooted in long-standing relationships, exceptional service, and a deep understanding of what our customers need to succeed.

Our U.S.-based R&D team works tirelessly to deliver outstanding lighting performance. Whether your project requires energy efficiency, flexible aiming, architectural finishes, or tight plenum solutions, the Nora team leverages our state-of-the-art facility—with a certified UL lab—to design, test, and deliver products of the highest quality, all while maintaining real-world value.

Nora Lighting's sales, service, and support teams are continually evolving to enhance the customer experience. We pride ourselves on fast, reliable communication—because we understand that projects can't wait. From lighting layouts and crossovers to pricing, availability, and general questions, customers have access to quick, cloud-based answers through our portal, along with a friendly, knowledgeable team always ready by phone. We also recognize that one size does not fit all, and we collaborate closely with our partners to create customized programs that elevate everyone's success.

Doing business with Nora means becoming part of the Nora family—a family guided by the motto: "Large enough to do it right, small enough to care." We look forward to welcoming you and supporting your growth for many years to come.

# Recessed Lighting

## Dedicated Housings & Trims



### APOLLO

#### 3" Specification Grade Downlights

**Aperture:** 3"

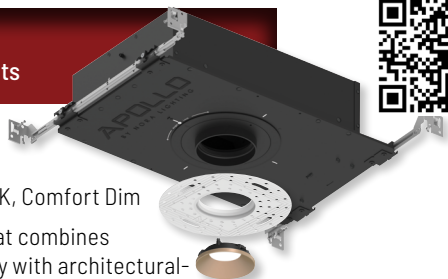
**Lumens:** 700lm to 3000lm

**CCT:** 2700K, 3000K, 3500K, 4000K, Comfort Dim

Specification grade downlight that combines cutting-edge COB LED technology with architectural-grade finishes and advanced TIR optics. Available in flanged and flangeless options, offering exceptional glare control and a range of versatile dimming protocols.

#### Latest Updates:

- Narrow spot options (10° & 12°)
- Comfort Dim option (warm dimming)
- Filter media accessories
- Remote emergency option



### IOLITE

#### Specification Grade Downlights

**Apertures:** 1", 2" and 4"

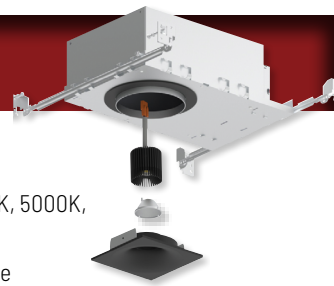
**Lumens:** 600lm to 2500lm

**CCT:** 2700K, 3000K, 3500K, 4000K, 5000K, Comfort Dim (warm dim)

Small aperture specification grade downlights feature COB LED technology with field adjustable beam spreads or 10° optic in a variety of square and round trims. 2" and 4" apertures are also available in trimless, for a clean knife edge look.

#### Latest Updates:

- High Lumen Comfort Dim up to 2450 lumens!
- Integral Emergency with Remote Test Switch
- DALI dimming option



### SAPPHIRE III

#### Architectural & Commercial Downlights

**Apertures:** 4", 6" and 8"

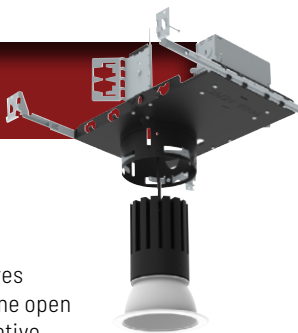
**Lumens:** 900lm to 5500lm

**CCT:** 2700K, 3000K, 3500K, 4000K

Architectural / commercial grade luminaires feature COB LED technology with deep cone open reflectors, adjustable, wall wash or decorative glasses reflectors. Frame-in options include universal architectural/commercial, remodel or retrofit existing frame-ins.

#### Latest Updates:

- New smaller emergency option (available w/remodel)
- New generation up to 5500lm
- Better efficiency (lumens per watt)



### COBALT SHALLOW

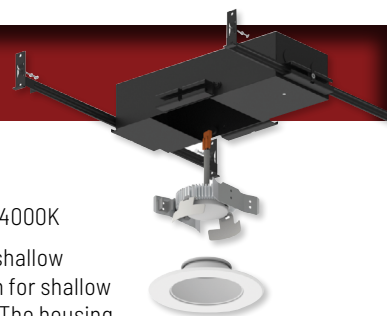
#### Commercial & Residential

**Aperture:** 4"

**Lumens:** 850lm or 1250lm

**CCT:** 2700K, 3000K, 3500K, 4000K

At only 2-5/8" height, Cobalt shallow housing is a perfect solution for shallow plenums and wet locations. The housing features a patented driver compartment for easy maintenance and access to driver from below the ceiling. A variety of round and square trims are available.



### MARQUISE III

#### Light Commercial & High End Residential

**Apertures:** 4", 5" and 6"

**Lumens:** 900lm to 2500lm

**CCT:** 2700K, 3000K, 3500K, 4000K

Commercial and high-end residential ICAT series that utilizes the same COB LED technology as the Sapphire III Series. Variety of adjustable reflectors, square, slope and baffles. Housings include new construction, remodel, slope or retrofit existing housings.

#### Latest Updates:

- New generation up to 2500lm
- 6" sloped ceiling options
- 5" & 6" adjustable trim options



### COBALT HIGH LUMEN

#### Commercial & Residential

**Aperture:** 6"

**Lumens:** 1500lm or 2000lm

**CCT:** 2700K, 3000K, 3500K, 4000K, Comfort Dim (warm dim)

Cobalt high lumen LED downlights utilize the same trims as our Click series for higher ceiling applications. High lumen downlights require a dedicated housing available in new construction or remodel, for IC or Non-IC applications.



#### Latest Updates:

- High Lumen Comfort Dim up to 2000 lumens!
- IC rated new construction housing



# Recessed Lighting

## Retrofit Downlights



### ONYX

Reflector, Adjustable, Square, Wall Wash



**Apertures:** 4", 5" and 6"

**Lumens:** 700lm to 1150lm

**CCT:** Dedicated or Selectable CCT (27K/30K/35K/40K/50K)

Onyx LED retrofits are available in dedicated or selectable CCT. Trim styles include adjustable, baffle, square, wall wash and reflectors that are compatible with most IC and Non-IC housings. Selectable CCT fixtures include a 5 CCT switch located on the back of each luminaire.

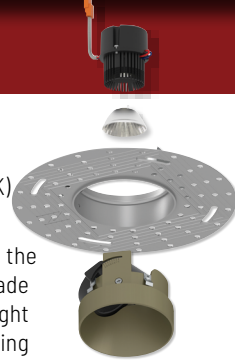
#### Latest Updates:

- 4" 12V MR16 retrofit with Selectable CCT
- 4" 120V Round or Square Wall Wash with Selectable CCT
- 120V Adjustable Retrofit with Selectable CCT



### PEARL

Specification Grade Retrofits



**Aperture:** 4", 5" and 6"

**Lumens:** 1200lm

**CCT:** Dedicated (27K, 30K, 35K, 40K) or Comfort Dim (warm dim)

Specification LED retrofits utilize the same iolite technology for a high grade retrofit solution in residential and light commercial applications. Featuring COB LED technology with field adjustable beam spreads and a variety of square and round trims.

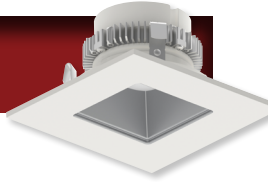
#### Latest Updates:

- New trimless option for 4" and 6" housings
- New 4" & 5"/6" adjustable trim options
- 12V retrofit options for 4" and 6" housings



### COBALT CLICK

Commercial & Residential



**Apertures:** 4", 5" and 6"

**Lumens:** 750lm to 1000lm

**CCT:** Dedicated, Selectable (27K/30K/35K/40K/50K), Comfort Dim (warm dim)

Cobalt Click LED retrofit luminaires feature a patented "Click" system allowing trims to be changed in the field. Each Cobalt series incorporates COB LED technology for a consistent appearance throughout.

#### Latest Updates:

- Now available with Selectable CCT (27K/30K/35K/40K/50K)
- New Comfort Dim dims down from 3000K to 2000K
- 0-10V dimming and emergency pre-wire options



### MARQUISE III RETROFIT

Light Commercial & Residential



**Apertures:** 4", 5" and 6"

**Lumens:** 1300lm

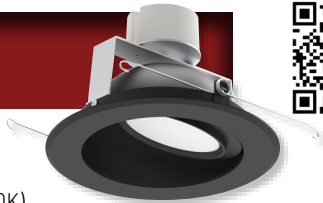
**CCT:** 2700K, 3000K, 3500K, 4000K

Marquise LED retrofits utilize the same trims as dedicated Marquise III downlights for a deep cone solution in commercial and residential applications. Featuring COB LED technology with specified beam spreads in spot, narrow or flood options.



### COBALT ADJUSTABLE

Residential & Sloped Ceilings



**Apertures:** 4", 5" and 6"

**Lumens:** 1000lm or 1200lm

**CCT:** Dedicated CCT (27K, 30K, 35K, 40K)

Cobalt adjustable LED retrofits feature a patented mechanism that allows the LED light source to tilt 30° without breaking the ceiling plane or exposing the housing. Luminaire rotate 30° vertically and 358° horizontally with additional optic and lenses included.

#### Latest Updates:

- Includes frosted and semi-frosted lenses
- Includes field changeable optics
- Optional TIR optics, 0-10V dimming and emergency options



### SAPPHIRE III RETROFIT

Commercial & Residential



**Apertures:** 6" and 8"

**Lumens:** 900lm to 5500lm

**CCT:** Dedicated CCT (27K, 30K, 35K, 40K)

Sapphire LED retrofits utilize the same trims as dedicated Sapphire III downlights for an easy replacement to out dated architectural and commercial luminaires. Featuring COB LED technology with specified beam spreads in spot, narrow or flood options. Variety of trims are available in reflector, wall wash or decorative glass options.

#### Latest Updates:

- New generation up to 5500lm
- Better efficiency (lumens per watt)
- ENERGY STAR certified

# Recessed Lighting

## Can-less Downlights



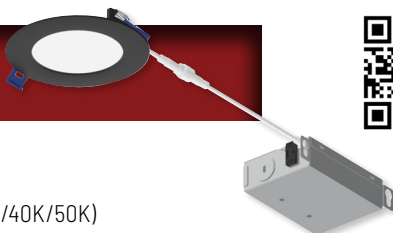
### FLAT Non-Metallic Wafer Downlights

**Apertures:** 4" and 6"  
**Lumens:** 700lm or 1050lm  
**CCT:** Selectable CCT (27K/30K/35K/40K/50K)

Flat wafer can-less LED downlights feature a non-metallic trim for corrosive environments. A selectable CCT switch is built-in to remote dimmable driver, allowing the end user to select the color temperature. IC Airtight luminaires are only 3/8" tall and rated for wet locations.

#### Latest Updates:

- Black power-coated finish (in stock)
- 120-277V input; 0-10V dimming option (consult factory)
- Remote emergency & ribbon test switch options



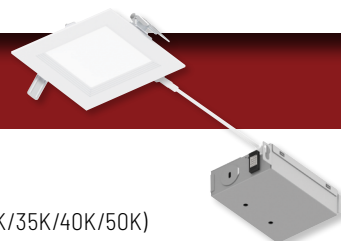
### FLIN Baffled Wafer Downlights

**Apertures:** 4" and 6"  
**Lumens:** 700lm or 1050lm  
**CCT:** Selectable CCT (27K/30K/35K/40K/50K)

Flin wafer can-less LED downlights feature a regressed lens with sharp baffle cuts to reduce aperture brightness. A selectable CCT switch is built-in to remote dimmable driver, allowing the end user to select the color temperature. IC Airtight luminaires are only 1-1/4" tall and rated for wet locations.

#### Latest Updates:

- Round and Square trims (adjustable also available)
- 120-277V input option (in stock)
- Remote emergency & ribbon test switch options



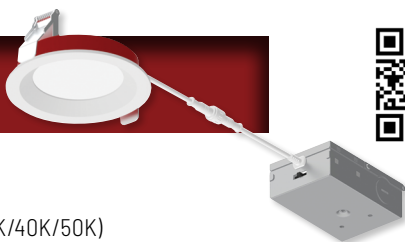
### FIRE RATED 2-Hour Certified & Listed

**Apertures:** 4" and 6"  
**Lumens:** 1200lm to 1550lm  
**CCT:** Selectable CCT (27K/30K/35K/40K/50K)

Fire rated can-less downlights are tested and listed for two-hour fire rating. Multi-piece construction provides an extra layer of protection to prevent the spread of fire above the ceiling within a two-hour rating.

#### Latest Updates:

- New reflector trim option (NFRC-R4W3 & NFRC-R6W3)
- cETLus Listed for 2-Hour Fire Rating to UL 263 & ASTM E119
- ENERGY STAR certified
- Remote emergency & ribbon test switch options



### IOLITE CAN-LESS Specification Grade Downlights

**Apertures:** 1", 2" and 4"  
**Lumens:** 900lm to 1250lm  
**CCT:** Dedicated (27K, 30K, 35K, 40K) or Comfort Dim (warm dim)

Award winning Iolite dedicated downlights in a small form factor for new construction or remodel applications. IC air-tight rated luminaires are ordered a la carte (module, trim and driver) and each module includes field changeable optics for customization.

#### Latest Updates:

- New 4" trimless option
- 4" sloped ceiling option
- Remote emergency & ribbon test switch options



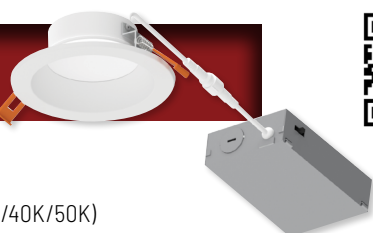
### THEIA Light Commercial & Residential

**Apertures:** 4", 6" and 8"  
**Lumens:** 950lm to 2100lm  
**CCT:** Selectable CCT (27K/30K/35K/40K/50K)

Theia downlights feature a deep regressed reflector to give the appearance of a dedicated downlight with a simplistic installation. IC Air-Tight commercial grade luminaires are available in three apertures and selectable CCT switch is built-in to remote dimmable driver.

#### Latest Updates:

- Haze reflector finish
- 120-277V input; 0-10V dimming option (in stock)
- Remote emergency & ribbon test switch options



### QUARTZ Commercial Grade Downlights

**Apertures:** 4", 6" and 8"  
**Lumens:** Selectable Lumens (800lm to 3300lm)  
**CCT:** Selectable CCT (30K/35K/40K)

Quartz downlights are an architectural and commercial grade luminaire with two selectable switches built-in to the top of the fixtures. Switches control the lumens output and CCT, allowing the appearance of the fixture to be determined at time of installation.

#### Latest Updates:

- 6" & 8" Square options (in stock)
- Frame-in with junction box (coming soon)
- Remote emergency & ribbon test switch options



# Recessed Lighting

## Can-less Downlights



### M1 1" 12V Low Voltage Downlights

**Aperture:** 1"  
**Lumens:** 100lm  
**CCT:** 2700K or 3000K

12V M1 LED modules include four plastic downlight trims, three optics and 6" quick connect. Field changeable trims are available in variety of styles in black, brushed nickel or white finish. A remote driver is required.

#### Latest Updates:

- New universal driver allows for 0-10V dimming



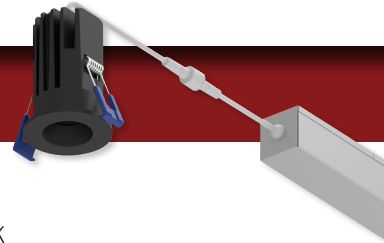
### M1+ 1" 120V Downlights

**Aperture:** 1"  
**Lumens:** 600lm  
**CCT:** 2700K or 3000K

120V M1+ LED luminaires include a die-cast power-coated round trim in black, bronze or white finish. IC airtight rated luminaires can be changed to a square trim. Variety of accessories are available from extension cables to new construction frame-in options.

#### Latest Updates:

- Remote emergency & ribbon test switch options



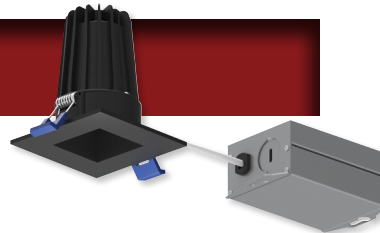
### M2 2" Downlights

**Apertures:** 2" & Multiples  
**Lumens:** 400lm to 900lm  
**CCT:** 2700K, 3000K or 4000K

Award winning M2 downlights offer the most versatility and options for any application. IC airtight rated luminaires are available in downlight, adjustable, round or square trims. A multiple lighting system can be created with a two head or three head trim MLS flange accessory.

#### Latest Updates:

- 4000K available on select trims
- Round or Square trims, and Multiples option
- Remote emergency & ribbon test switch options



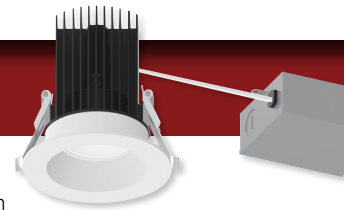
### M4 4" Downlights

**Aperture:** 4"  
**Lumens:** 950lm or 1100lm  
**CCT:** 2700K or 3000K

M4 downlights are built off the same platform as M2 series, with a larger aperture and brighter output. IC airtight rated luminaires are available in downlight, gimbal or elbow trims in round or square.

#### Latest Updates:

- Remote emergency & ribbon test switch options



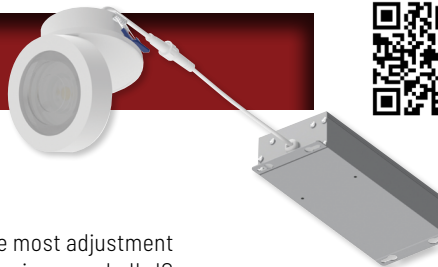
### M-WAVE Adjustable Downlights

**Apertures:** 2" and 4"  
**Lumens:** 750lm or 1250lm  
**CCT:** 2700K or 3000K

M-Wave downlights offers the most adjustment for aiming without any housing needed! IC airtight rated luminaires extend up to 90° from surface and rotate 350°.

#### Latest Updates:

- Remote emergency & ribbon test switch options



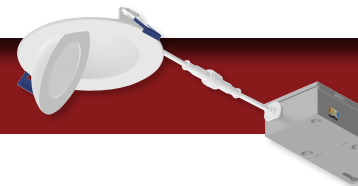
### M-CURVE Adjustable Downlights

**Apertures:** 4" and 6"  
**Lumens:** 900lm or 1300lm  
**CCT:** Selectable CCT (27K/30K/35K/40K/50K)

M-Curve adjustable downlights never expose the ceiling opening while adjusting 360°. IC Air-Tight and wet location rated. A selectable CCT switch is built-in to remote dimmable driver, allowing the end user to select the color temperature.

#### Latest Updates:

- Remote emergency & ribbon test switch options



# Recessed Lighting

## Sloped Ceiling, Junction Box, and Multiples



### SLOPED CEILING

Ceiling pitches from 2/12 to 6/12

**Aperture:** 6"

**Lumens:** 1200lm

**CCT:** Selectable CCT (27K/30K/35K/40K/50K)

Retrofit existing sloped housings with LED retrofit downlights that deliver up to 1200 lumens with two trim options and a selectable color temperature switch. IC Air-tight sloped ceiling housings are also available in new construction or remodel options that can be adjusted for 1/2 (10°) to 3/12 (26.5°) ceiling pitches. Housings can be specified with a medium base socket or quick connect for LED luminaires. Sloped LED luminaires include a retrofit adapter for new and existing medium base housings.



### SUPER SLOPED CEILING

Ceiling pitches from 7/12 to 12/12

**Aperture:** 6"

**Lumens:** 1200lm

**CCT:** Dedicated CCT (27K, 30K, 40K)

Super sloped ceilings' pitches range from 7/12 (30°) to 12/12 (45°) and require a housing with greater angle. Variety of IC air-tight sloped ceiling housings are available with a medium base socket or dedicated for LED luminaires only. Super sloped LED luminaires include a retrofit adapter for new and existing medium base housings. LED luminaires also have dedicated CCT options in 2700K, 3000K or 4000K.



### JUNCTION BOX HOUSING

Meets 1-Hour and 2-Hour Fire Rating

**Aperture:** 4"

**Compatible Luminaires:**

AC Onyx, Cobalt Click with Selectable CCT, Pearl and Slim

Dedicated new construction housing for use in insulated ceilings can be in direct contact with insulation. Powder-coated steel housing meets a 2-hour fire rating per the International Building Code section 714 for 1-hour and 2-hour fire-rated assemblies. Air-tight construction provides energy savings by reducing the flow of air through the ceiling. The housing is labeled for use with LED downlights or as an outlet box.



### M2 MLS

Multiple Lighting System

**3-Head Aperture:** 6-7/8" x 15-1/2"

**Lumens:** 400lm to 600lm per head

**CCT:** 2700K, 3000K, 4000K

M2 Modular LED Multiple Lighting System (MLS) allows multiple LED luminaires to be installed in one recessed trim without a large housing. Each M2 LED luminaires includes a dedicated junction box with LED driver and quick connects. IC rated recessed lighting system is consist of one to three heads and four trims options. M2 multiple series is a perfect solution for most retail, hospitality and commercial applications. MLS can be wired as a single complete unit or as two to three individually controlled or dimmed modules.



### IOLITE MLS

Multiple Lighting System

**3-Head Aperture:** 3-5/8" x 10-3/4"

**Lumens:** 1000lm per head

**CCT:** 2700K, 3000K, 3500K, 4000K, 5000K,

Comfort Dim (warm dim)

Endless possibilities with Iolite multiple's functionality and architectural aesthetics. Iolite multiple recessed family consist of one to three independently adjustable heads, flanged or trimless, variety of beam distributions and multiple reflector options. Iolite multiple series is a perfect solution for most retail, hospitality and commercial applications.



### PULL DOWN & GIMBAL

Multiple Lighting System

**3-Head Aperture:** 6-1/4" x 18-1/2"

**Lumens:** 900lm to 3500lm per head

**CCT:** 2700K, 3000K, 3500K, 4000K

LED dedicated MLS luminaires allow for adjustable lighting modules and pull-down adjustables in flanged and trimless styles. Offered in one, two, and three light linear configurations, the units are completely serviceable from below and can be specified in either 120V or 277V. MLS can be wired as a single complete unit or as two to three individually controlled or dimmed modules.



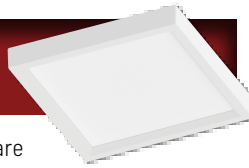
# Surface Mounts

Surf, Slim, ELO, and Opal



## SURF

Regressed Baffle with Light Guide



**Apertures:** 4", 6" and 7" Round or Square

**Lumens:** 750lm to 1150lm

**CCT:** Dedicated or Selectable CCT (27K/30K/35K/40K/50K)

SURF Edge-Lit Surface Mount is an aesthetically pleasing luminaire that produces even illumination while reducing glare. The specially designed regressed lens greatly reduces aperture brightness and extends less than 11/16" from the ceiling. An architectural elegance for today's specification standards. SURF mounts easily over a standard or fire rated fixture junction boxes.

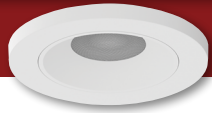
### Latest Updates:

- Round luminaires are now available with Selectable CCT
- Remote emergency & ribbon test switch options



## SLIM

4" Regressed and Flat



**Aperture:** 4"

**Lumens:** 800lm or 950lm

**CCT:** Selectable CCT (27K/30K/35K/40K/50K)

Slim LED surface mount luminaires easily install over 4" octagonal junction boxes. Alternatively an optional retrofit kit is also included to install over 4" recessed housings. Luminaires produce 800 or 950 lumens and include a selectable CCT switch to change the color temperature from 2700K / 3000K / 3500K / 4000K / 5000K.

### Latest Updates:

- New regressed option
- Remote emergency & ribbon test switch options



## ELO

Wet Location Flush Mounts



**Apertures:** 4" to 12"

**Lumens:** 700lm to 1750lm

**CCT:** Selectable CCT (27K/30K/35K/40K/50K)

ELO surface mount luminaires are 3/4"(120V) or 5/8"(120-277V) thick and mount over standard junction boxes. Both series include a Selectable CCT switch and are wet location rated. 120-277V ELO also include an additional Selectable Wattage switch with 0-10V dimming.

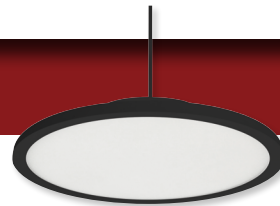
### Latest Updates:

- New family with Selectable CCT switch
- 120-277V options with 0-10V dimming
- 120V version accepts new decorative rings



## 16" ELO

Surface or Pendant Mounted



**Aperture:** 16"

**Lumens:** 2100lm

**CCT:** Dedicated CCT (27K, 30K, 40K)

16" ELO luminaires are 1" thick and accept 120V input with phase dimming. Damp rated luminaires can be surface mounted or suspended mounting kits. Delivering up to 2100 lumens in dedicated CCT options (2700K, 3000K or 4000K).

### Latest Updates:

- Black finish available in 3000K only



## OPAL

Disk Lights



**Apertures:** 4" to 8"

**Lumens:** 700lm to 2150lm

**CCT:** Dedicated or Selectable CCT (27K/30K/35K/40K/50K)

AC Opal Series LED fixtures are designed to surface mount over a standard junction box. The low 7/8" profile luminaires are available in 4", 6" and 8" sizes from 700lm to 2150lm in three finishes; and 7" 1050lm unit with PIR motion sensor and Selectable CCT. Opal is an excellent energy efficient lighting solution for laundry rooms, closets, pantries, hallways and showers in residential and commercial retrofit or new construction applications.

### Latest Updates:

- New 7" motion sensor with Selectable CCT
- Remote emergency & ribbon test switch options



## REGRESSED OPAL

Decorative Disk Lights



**Apertures:** 4" and 6"

**Lumens:** 700lm or 1100lm

**CCT:** Dedicated CCT (27K, 30K, 40K)

or Selectable CCT (27K/30K/35K/40K/50K)

Regressed Opal LED luminaires are designed to resemble the appearance of a recessed trim. Surface mount fixtures can be mounted over a standard junction box or retrofit over a recessed housing with an accessory. Regressed Opal produces even illumination with no diode image, from bright to dim.

### Latest Updates:

- New 6" regressed with Selectable CCT switch
- Remote emergency & ribbon test switch options



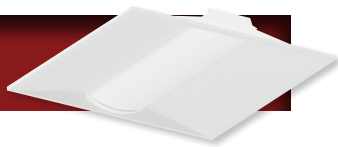
# Commercial Lighting

Lay-In, Panels, RLM, & Cylinders



## TROFFERS

Commercial Lay-In Lighting



**Sizes:** 2' x 2' and 2' x 4'

**Lumens:** Selectable Lumens (2250lm to 6550lm)

**CCT:** Selectable CCT (30K/35K/40K/50K/65K)

LED troffers provide both functionality and efficiency with two integrated, selectable switches. Selectable lumens allow for a variety of mounting heights, and Selectable CCT adjusts the color temperature.

### Latest Updates:

- Two built-in switches for Selectable Lumens and CCT
- Compatible with surface mount and recessed mounting kits
- Remote emergency option



## PANELS

Commercial Lay-In Lighting



**Sizes:** 2' x 2' and 2' x 4'

**Lumens:** Selectable Lumens (2250lm to 6550lm)

**CCT:** Selectable CCT (30K/35K/40K/50K/65K)

LED Backlit panels can be utilized in offices, conference rooms, libraries and other tasks areas where general illumination is desired. Each luminaire includes two selectable switches; Selectable Lumens allows the end user to determine the wattage input & Selectable CCT changes the color temperature.

### Latest Updates:

- New integral motion sensor option



## FRAME LIGHTS

Commercial Lay-In Lighting



**Sizes:** 2' x 2' and 2' x 4'

**Lumens:** Selectable Lumens (4000lm to 6950lm)

**CCT:** Selectable CCT (35K/40K/50K)

LED Frame lights are perimeter fixtures for standard 2'x2' or 2'x4' ceiling grids. Remote driver includes two Selectable Switches to change the color temperature and brightness. Universal input (120-277VAC) and dimmable with compatible 0-10V dimmers. No cutting is required and ceiling tile sits inside the frame light.

### Latest Updates:

- No assembly required!
- Remote emergency & ribbon test switch options



## RLM

Commercial Shades



**Diameters:** 8", 10" and 16"

**Lumens:** 1200lm to 3800lm

**CCT:** Dedicated CCT (30K, 35K, 40K)

Aluminum spun shades with built-in dimmable driver and LED COB technology provide excellent general illumination. The optics are set deep inside the shades for visual comfort. Shades' exterior finishes include: white, black and gun metal with reflective white interior bowls. The shades are a perfect solution for retail, commercial, and hospitality applications.



## 3" WALL MOUNTED CYLINDER

Outdoor Wet Location Rated



**Size:** 3" (ADA compliant)

**Lumens:** 3000lm (1500lm per direction)

**CCT:** Selectable CCT (30K/40K/50K)

Architectural grade ADA compliant up-and-down wall mount cylinder with two dedicated COB LEDs mounted in the up and down position. Each cylinder includes two integral switches to change the direction of light and color temperature after installation. IP65 and wet location rated for most indoor and outdoor applications.

### Latest Updates:

- Phase dimming option coming soon



## 6" CYLINDERS

Stem, Cable, Surface or Wall Mounted



**Aperture:** 6"

**Lumens:** 750lm to 5500lm

**CCT:** Dedicated (27K, 30K, 35K, 40K),  
Selectable (27K/30K/35K/40K/50K),  
Comfort Dim (warm dim)

6" Cylinders are available in three different series: Sapphire III (up to 5500lm w/ specifiable beam spreads), Cobalt (up to 1000lm) and Medium Base Incandescent/LED. Each cylinder has four different mounting types for any application; Cable mounted includes 8' cable, Wall mount is Wet Location rated, Surface mounted or Stem mounted with new sloped canopy.

### Latest Updates:

- New integral and remote emergency options
- Sloped canopy with all wires in stem
- Integral emergency coming soon

# Commercial Lighting

iLENE, Linear, Strip Lights, & Wraps



## iLENE Miniature Cylinders

**Apertures:** 2", 3" and 5"  
**Lumens:** 1000lm to 2000lm  
**CCT:** Dedicated (27K, 30K, 35K, 40K) or  
Comfort Dim (warm dim)

iLENE LED Mini Cylinders consists of three sizes, multiple finishes and is offered in a surface, stem or cable mounted. Using Cree COB or Comfort Dim technology the cylinders produce 1000lm (2"), 1500lm (3") or 2000lm (5"). Each iLENE cylinder includes three field changeable optics for maximum design control. Optional accessories can further customize the fixtures.

### Latest Updates:

- 2" iLENE accepts pendant cone accessory



## L-LINE LED DIRECT Surface or Pendant Linear

**Lengths:** 2' to 8' Linear, L, T, and X  
**Lumens:** 2100lm to 8400lm  
**CCT:** Dedicated or Selectable CCT (30K/35K/40K)

L-Line LED Direct luminaires include two integral switches for lumen output and selectable color temperature. Sleek extruded housing with symmetrical light distribution will evenly illuminate surfaces with a diffused lens. These pendant or surface mounted fixtures are ideal for commercial, retail, healthcare and education applications. Universal input (120-277VAC) and 0-10V dimming.

### Latest Updates:

- New integral emergency option for 4' and 8' linear
- New continuous lens for seamless appearance



## L-LINE INDIRECT / DIRECT Wall Mount or Pendant Linear

**Lengths:** 2' to 8' Linear, L, T, and X  
**Lumens:** 1140lm to 12304lm  
**CCT:** Selectable CCT (30K/35K/40K)

L-Line LED indirect / direct luminaires include three integral switches for direction of light and selectable color temperature per direction. Sleek extruded housing with symmetrical light distribution will evenly illuminate surfaces with a diffused lens. These pendant or wall mounted fixtures are ideal for commercial, retail, healthcare and education applications. Internal quick connects allow systems to be connected with seamless luminous L, X or T connectors

### Latest Updates:

- New integral motion sensor option for 4' and 8' linear
- New integral emergency option for 4' and 8' linear



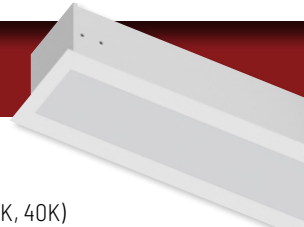
## RECESSED L-LINE Recessed Linear

**Lengths:** 2' to 8' Linear  
**Lumens:** 2100lm to 8400lm  
**CCT:** Dedicated CCT (30K, 35K, 40K)

Recessed L-Line offers a clean and modern appearance with a sleek extruded aluminum housing. Symmetrical light distribution will evenly illuminate surfaces with a diffused lens, making L-Line ideal for commercial, retail, healthcare and education applications. Luminaires can be connected together up to a maximum of 80' in length.

### Latest Updates:

- New continuous lens for seamless appearance



## STRIP LIGHTS Industrial Linear

**Lengths:** 4' and 8'  
**Lumens:** 3300lm or 8000lm  
**CCT:** Selectable CCT (30K/35K/40K)

Industrial strip light includes an integral CCT switch to change the color temperature at any time! Ideal for commercial, residential, industrial and retail applications. Luminaire's lens is designed to evenly spread the light in a complete 120° beam pattern. The smooth lens makes for easy maintenance and no diode image. NLSTR can be used in storage or utility buildings, coves, display cases, workshops and garages for task and general lighting.

### Latest Updates:

- New integral motion sensor option
- New integral emergency option



## WRAPAROUNDS Industrial Linear

**Lengths:** 2' and 4'  
**Lumens:** Selectable Lumens (2000lm to 8100lm)  
**CCT:** Selectable CCT (30K/35K/40K)

Industrial LED Wraparound luminaires include two integral switches for lumen output and selectable color temperature. Ideal for commercial, residential, industrial, and retail applications, such as; stairwells, hallways, garages, schools, offices, and more. Easy to install and great for replacing outdated fluorescents with an energy efficient, cost saving alternative. The luminaire's lens is designed to uniformly spread and soften the appearance of the light while maximizing its distribution and output.

### Latest Updates:

- 2' Wraparound coming soon



# Track Lighting

MAC, MAX, MAY, T-Line, and Z-Track



## MAC Field Changeable Optics

**Diameter:** 2-1/4" (MAC) & 3-1/4" (MAC XL)  
**Lumens:** 800lm (MAC) or 1250lm (MAC XL)  
**CCT:** Dedicated CCT (27K, 30K, 35K, 40K)

MAC LED track heads have a sleek and simple style that fits any decor. The small, but powerful fixture features a die-cast aluminum body that dissipates heat seamlessly, protecting the fixture for long term life and performance. Unique design allows the beam spreads to be changed in field; spot included and flood installed. The track heads resemble traditional line voltage fixtures without large driver enclosures.



## MAY Fixed Narrow Flood Optic

**Size:** 2-1/4" diameter / 5-1/2" max. length  
**Lumens:** 850lm  
**CCT:** Dedicated CCT (27K, 30K, 35K, 40K)

MAY LED track heads have an eclectic style to fit any decor. The small die-cast aluminum body helps dissipate seamlessly, protecting the fixture for long term life and performance. The track heads resemble traditional line voltage fixtures without large driver enclosures.



## COMFORT DIM MAC XL & MAY

**Diameter:** 2-1/4" (MAY) & 3-1/4" (MAC XL)  
**Lumens:** 650lm (MAY) or 1000lm (MAC XL)  
**CCT:** Comfort Dim (Warm Dim)

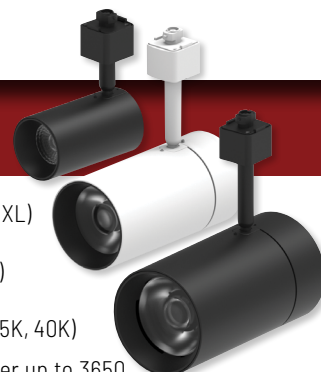
Comfort Dim technology is a warm, right light dimming that creates an intimate atmosphere. Incorporating this technology within MAY and MAC XL track heads, allows luminaires to be repositioned along the track system or used with J-Style and L-Style systems. Comfort Dim is a perfect solution for restaurants, cineplexes, home theaters, multi-purpose event venues, and other applications where the temperature and comfort of the light sets the mood.



## MAX Three Sizes & Outputs

**Diameter:** 2-3/8" (Mini) to 4" (XL)  
**Lumens:** 1000lm (Mini) to 3650lm (XL)  
**CCT:** Dedicated CCT (27K, 30K, 35K, 40K)

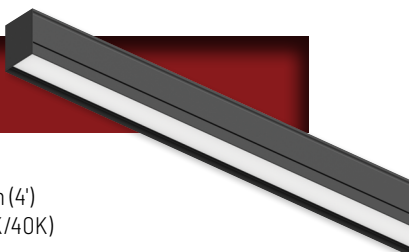
MAX LED track heads deliver up to 3650 lumens, ideal for higher ceilings and commercial applications. Luminaires include COB LED technology with TIR optics that can be specified in three beam angles. Constructed of extruded and machined aluminum, the heat-sink and integrated driver housing provide a sleek and modern look, designed to quietly compliment any space.



## T-LINE Linear Track Head

**Lengths:** 22-1/2" (2') & 44-3/4" (4')  
**Lumens:** 1600lm (2') or 3200lm (4')  
**CCT:** Selectable CCT (30K/35K/40K)

T-Line linear series allows the end user to select between 3000K, 3500K or 4000K at the time of installation with a 3 position switch. Luminaire runs parallel to the track for a uniform appearance and bright illumination up to 3200 lumens. T-Line includes a diffused lens for glare control and even illumination. Optional asymmetric and double asymmetric lenses make the T-Line an excellent solution for wall washing, sign and aisle lighting. Add the optional visor to conceal the light source when using the asymmetrical lens. An exceptional product for retail, commercial and hospitality applications.



## Z-TRACK Zoomable Track Head

**Diameter:** 2-9/16"  
**Lumens:** 1550lm  
**CCT:** Selectable CCT (27K/30K/35K/40K/50K)

Zoomable Track Head offers aesthetics, flexibility and performance. Delivering up to 1550lm and featuring a field adjustable beam angle from 20° to 50°, it provides precise light control for any setting. Each luminaire available in five selectable CCTs, which allows easy color temperature adjustment from 2700K to 5000K, making it ideal for diverse applications. Perfect for retail, galleries, and commercial spaces, this innovative fixture seamlessly adapts to both accent and general lighting needs.





# Step & Puck Lights

Ari, Brick, Josh, NEXUS and Drivers



## ARI STEP LIGHTS

4" Horizontal and Vertical

**Size:** 4-1/2" x 2-3/4"

**Lumens:** 37lm to 86lm

**CCT:** Dedicated CCT (3000K or 4000K)

Ari LED Step Lights are sleek, energy-efficient LED fixtures with a modern screw-less die-cast aluminum face plate. They deliver a discreet, downward beam for safety and accent lighting on stairs, walkways, balconies, or patios. Available in multiple face-plate styles (interchangeable, vertical, or horizontal) and finishes, they feature integrated, non-dimmable drivers, high color rendering (90+ CRI), and are cETLus listed for wet locations.



## BRICK STEP LIGHTS

8" Die-Cast Aluminum

**Size:** 8-5/8" x 3-5/16"

**Lumens:** 127lm to 166lm

**CCT:** Selectable CCT (18K/27K/30K/40K/50K)

Brick LED Step Lights offer durable, architectural illumination for stairs, walkways, and outdoor pathways. Available in louvered, lensed, and shroud face-plate styles, each fixture features long-lasting, energy-efficient LEDs and a sturdy die-cast housing rated for wet locations. Ideal for both safety and accent lighting, the Brick series delivers reliable performance with a clean, contemporary aesthetic.



### Latest Updates:

- Now available with Selectable CCT switch



## JOSH PUCK LIGHTS

12V & 24V Fixed

**Size:** 3" diameter

**Lumens:** 300lm

**CCT:** Dedicated CCT (27K, 30K, 35K, 40K)

Josh LED puck lights can be surface or recessed mounted with an included finished collar. 12V or 24V Dimmable LED luminaires produces up to 300 lumens with 2700K, 3000K, 3500K or 4000K. Each luminaire includes a frosted lens to eliminate hot spots generated by direct view LEDs, which reflects on surfaces. Josh is available in black, bronze, brushed nickel or white finishes.



## JOSH ADJUSTABLE

12V & 24V Puck Lights

**Size:** 3" diameter

**Lumens:** 300lm

**CCT:** Dedicated CCT (27K, 30K, 35K, 40K)

Adjustable Josh LED puck lights can tilt up to 18°. Each luminaire includes a surface mount enclosure, for recessed applications an additional accessory is required. Adjustable Josh puck lights incorporate the same technology as the fixed series and can be used in conjunction with.



## NEXUS

12V & 24V Dimmer + Driver Switch

**Input Voltage:** 120VAC

**Output Voltage:** 12VDC or 24VDC

**Wattages:** 60W or 100W

The NEXUS all-in-one LED driver and dimmer eliminates compatibility issues by combining an LED dimmer switch and power supply in one integrated unit. NEXUS mounts in a standard in-wall switch box and fits a standard Decora switch plate. The unit is available in 12V or 24V 60W and 24V 100W, provides 100% to 5% dimming, converts 120V AC to DC low voltage.



## NPSU

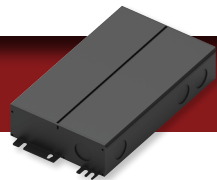
5-in-1 Universal Dimming Drivers

**Input Voltage:** 110-277VAC

**Output Voltage:** 12VDC or 24VDC

**Wattages:** 60W to 288W

Constant voltage drivers are available for 12V or 24V under cabinet and linear systems. Five dimming protocols (Triac, ELV, MLV, 0-10V, PWM) within one driver. Dimmable down to 1% with over-current, over-voltage and temperature protection. Driver enclosure is rated for wet locations.



# Accent Lighting

Under Cabinet, Linear, Exit, and Emergency

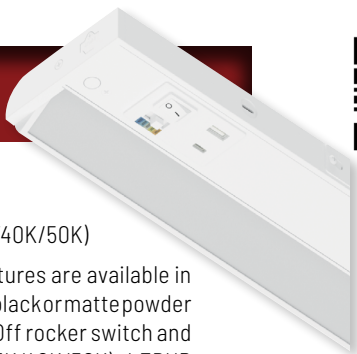


## LEDUR ADJUSTABLE

35° Adjustability & USB Ports

**Lengths:** 10" to 42"  
**Lumens:** 600lm per foot  
**CCT:** Selectable CCT (27K/30K/35K/40K/50K)

Adjustable LEDUR under cabinet fixtures are available in five sizes (10" to 42") and two finishes (black or matte powder white). Each fixture includes an On/Off rocker switch and Selectable CCT switch (27K/30K/35K/40K/50K). LEDUR fixture's lens can be adjusted  $\pm 35^\circ$  in either direction to aim the light in desired location. Linkable fixtures can be fed through input quick connects or hardwired through the back. Delivering over 600 lumens per foot with edge-lit LEDs to eliminate the diode image and provide uniform reflectance of light without hot spots. 16" to 42" fixtures include USB-A and USB-C ports with 5V 1A charging capabilities.



## BRAVO FROST

90° Adjustable Brackets

**Lengths:** 12" to 32"  
**Lumens:** 850lm per foot  
**CCT:** Selectable CCT (30K/40K/50K)

Low profile Bravo FROST TW (Selectable CCT) LED linear luminaires offer a diode image-free solution for residential and commercial use. Less than 1" in depth, Bravo FROST TW fixtures can be installed under cabinets, within shelves/ displays and architectural coves. Bravo FROST TW offers 850 lumens / 10W per foot with a selectable CCT switch which can be set at 3000K, 3500K or 4000K. Each fixture includes adjustable mounting brackets that adjust the luminaire up to 90° and lengths range from 12" to 32". An encapsulated 120V dimmable LED driver in each unit allows extended runs and easier installation with 3-wire system.



## NULS

120V LED Linear

**Lengths:** 11" to 45"  
**Lumens:** 525lm per foot  
**CCT:** Dedicated CCT (27K, 30K, 40K)

NULS LED undercabinet produces over 525 lumens per foot while consuming only 5W and is available in 2700K, 3000K or 4000K. 120V input voltage eliminates the need for any drivers and wattage concerns. Luminaires can be connected together seamlessly or with cable accessories. Each system can be hardwired into a junction box and dimmed. Ideal for under cabinet, in cabinet, cove, display, general commercial, retail and residential lighting applications.

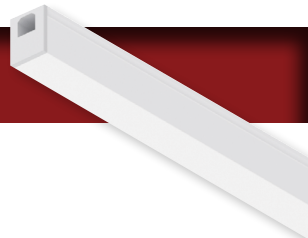


## LIGHTBAR

120V Linear with Internal Magnets

**Lengths:** 6" to 48"  
**Lumens:** 200lm per foot  
**CCT:** 3000K

120V LED Lightbar creates an uniform seamless line of light, with internal magnets for easy installation. Producing 200 lumens per foot with a dedicated 3000K, lightbar is a perfect solution for under cabinet, in cabinet, cove, display, and task applications. Variety of connectors and accessories allows luminaires to be connected together up to 40'.



## EXIT SIGNS

Wet Location, Dual Color & Combo

**Exit Signs:**  
Adjustable (NX-810, 811, 812)  
Combo (NEX-712, 730)  
Die-Cast (NX-505, 606, 615, 616)  
Dual Color (NX-603D)  
New York Approved (NEX-751, 752 & NX-550, 822)  
Plastic (NX-503, 504, 603)  
Recessed (NX-813, 814, 815)  
Wet Location (NEX-720 & NX-617)

Nora Lighting offers a large variety of exit signs for commercial applications. Ranging from New York Approved, Wet Location rated, Exit & Emergency combinations, and Selectable Color (Red/Green). Exit signs may be mounted recessed, surface or side-mounted.

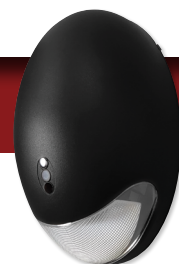


## EMERGENCY LIGHTS

Compact, Dual Head & Outdoor

**Emergency Lights:**  
Compact (NE-612)  
Dual Heads (NE-700, 806)  
Outdoor / Photosensor (NE-902, 921)  
Remote Heads (NE-861 to NE-984)  
Wet Location (NE-970)

Nora Lighting offers a variety of emergency lights for residential and commercial applications. Outdoor general lights include a cold weather heater to keep the battery operational and photosensor. Compact dual head emergency is diverse with brighter high output (150lm) heads and extra battery for remote capabilities. Remote heads are available in round, square, dual head and wet location options.



### Latest Updates:

- NX-603D-LED includes Selectable Color switch to change from red to green

# Tape Lights

120V, COB, RGBW, Comfort Dim, and Color Changing



## NUTP13

120V Outdoor Wet Location Rated

**Lengths:** 1" to 150' roll

**Lumens:** 330lm per foot

**CCT:** Dedicated CCT (27K, 30K, 40K)

IP65 rated LED Tape Light is perfect solution for indoor or outdoor applications without the need for LED drivers. Producing 330 lumens per foot at 2700K, 3000K or 4000K @ 90+ CRI. Tape is specified per length and factory installed with cord and plug or hardwired with TRIAC dimming. 120V input voltage eliminates the need for any drivers and wattage concerns.

### Latest Updates:

- New custom length calculator webpage



## 24V RGBW (NUTPCOB)

Color Changing LEDs with Dedicated CCT

**Length:** 16.4' roll

**Lumens:** 300lm per foot

**CCT:** RGBW with Dedicated 3000K

24V RGBW COB Tape Light has alternating LED diodes that are RGB and White. Users can create any color in the rainbow using a compatible RGBW controller or DMX decoder. Producing up to 300 lumens per foot and field cuttable every 1.31". A variety of accessories and channels are available for any application (cove, under cabinet, toe kick, etc.)

### Latest Updates:

- New part number suffix (-G2)



## 24V COMFORT DIM (NUTP12)

Warm Dim LEDs

**Length:** 16' roll

**Lumens:** 170lm per foot

**CCT:** Comfort Dim (3000K-1800K)

Comfort Dim technology tunes the color temperature as the luminaire is dimmed. Beginning at a bright 3000K, as the tape light is dimmed the color temperature warms to 1800K. LED Tape Light is a perfect solution for your LED linear lighting needs. This energy efficient and very low profile LED Tape is great for use in cove lighting, architectural enhancements, under cabinet or many more discreet locations.



## 24V COB (NUTP14 & NUTP15)

Field Cuttable Every 1.79"

**Lengths:** 16.4' or 100' roll

**Lumens:** 210lm or 450lm per foot

**CCT:** Dedicated CCT (27K, 30K, 35K, 40K)

24V COB LED Tape Light creates a uniform seamless line of light, without the need for additional diffused covers or accessories. Available in two outputs (210 or 450 lumens per foot) with Dedicated CCT (2700K, 3000K, 3500K or 4000K) @ 90+ CRI. Terminal block accessories are now available for power feeds or jumper cables for easy installation. Tape light is a perfect solution for low clearance or reflective surfaces to eliminate all glare or dotting.

### Latest Updates:

- New terminal blocks accessories for connections



## 24V CCT COLOR TUNING (NUTP10)

Color Changing LEDs

**Lengths:** 4", 12" or 16' roll

**Lumens:** 290lm per foot

**CCT:** Selectable CCT (2500K-4500K)

24V CCT Color Changing LED Light allows the end user to select from a 2500K to 4500K temperature with a handheld control. Different applications require different Kelvin temperatures to enhance various color spectrums. Use 2500K for a warm red enhancing application and 4500K for a blue/green enhancing application. The RF controller is operated with a remote or controller that lets the end user select the temperature and intensity as the application or mood changes as well as having the option to set optional automatic changing modes.



## 24V SIDE LIT (NUTP9)

Illuminates to the side, parallel to the surface

**Lengths:** 4", 12" or 16' roll

**Lumens:** 70lm per foot

**CCT:** Dedicated (2700K or 3000K)

24V Side-Lit LED Tape has the same performance features as the standard tape light, but instead of project the light straight, the light is projected to the side, parallel to the mounting surface of the tape. For example, when mounted under a cabinet in a horizontal position, the light projects sideways toward the back splash with minimal LED image on the counter top.



**NORA LIGHTING, INC.**

6505 Gayhart St.  
Commerce, CA 90040  
TEL 323.767.2600  
FAX 323.722.3677  
[www.NoraLighting.com](http://www.NoraLighting.com)

**DOMESTIC FACILITIES:**

Cincinnati, OH  
Dallas, TX  
Detroit, MI  
Edison, NJ  
Los Angeles, CA  
Louisville, KY  
Minneapolis, MN  
Nashville, TN

**INTERNATIONAL SALES:**

6505 Gayhart St.  
Commerce, CA 90040  
TEL 323.767.2600  
FAX 323.722.3677

The products shown in this catalog  
are covered by USA and International  
patents. Specifications subject to  
change without notice.

© Copyright 2026 Nora Lighting, Inc.  
All rights reserved