

NIOC-4RTLNDNC

4" Iolite Can-less Round Trimless Downlight

Source: 12W LED
1100lm

PRODUCT DESCRIPTION

4" Iolite can-less downlights can be installed in new construction or remodel applications. Each luminaire requires a trimless mud ring and will have no exposed trim flange or extend beyond the ceiling plane. Deep regressed cone reflectors optimize visual cut-off.

FEATURES

- No housing required - IC Air-Tight rated
- Easy installation for remodel or new construction applications
- Quick disconnect allows for extended lengths
- Dedicated CCT or Comfort Dim (warm dim)
- Flood optic, narrow flood and spot optics (included)
- 5-Year limited warranty
- cULus Listed for Wet Locations

SPECIFICATION

Construction: Trims are constructed of heat dissipating, die-cast aluminum. Aluminum die-cast LED module is threaded to fit the trim and transfer heat.

Air Flow Restriction: Luminaire has factory installed gasket to restrict airflow from room into ceiling plenum to <2CFM (cubic feet per minute) in accordance with ASTM 283 airtight requirements.

Clearance: IC rated luminaires are rated for direct contact with insulation (not spray foam insulation), no minimum clearance is required.

Driver Box: Prewired junction box includes 7" quick connect wire to LED module for ease of installation. Junction box includes two 1/2" trade size knockouts and snap on cover.

Mounting: No housing is required, two tensions steel spring clips secure luminaire to mud plate and ceiling. Accommodates ceiling thickness up to 3/4". Mud ring is required per trimless downlight. New construction frame-in kit is available, see accessories.

Maximum length between luminaire and driver is 40'. For longer remote driver remote run length, consult factory.

OPTICS

Each module includes field changeable optics (spot, narrow flood and flood - preinstalled).

ELECTRICAL

Input Voltage: 120VAC

Lumens / Wattage: 1100lm / 12W

Color Temperature: 2700K, 3000K, 3500K or 4000K

Color Rendering Index: 90+ CRI

Operating Temperature: 0°-30°C (Static White CCT) or 0°-25°C (Comfort Dim)

Lifetime: 50,000 hours @ L70

Comfort Dim: Comfort Dim color tunes the temperature from a bright 3100K, to a romantic and comfortable 2000K on a gradual, even curve. Available in 900lm only.

Dimming: Triac or ELV

Accessories: Luminaire will accommodate (1) hex louver and (1) translucent deco collar or opaque snoot, no accessory holder is required, see accessories page. A mud ring is required per trimless.

LABELS AND LISTINGS

- cULus Listed for Wet Locations
- [5-Year Limited Warranty](#)
- RoHS Compliant
- Certified to the high efficacy requirements of California Title 24 JA8-2025



Type

Project

Catalog No.

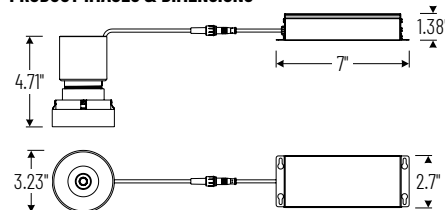
Notes

Performance Data

Part Number	Lumens	CCT	Optic
NIOC-4RTLNDNCMPW NIOC-24LED940X NJCB-12	1111lm	4000K	27° Spot
	1117lm	4000K	37° NFL
	1113lm	4000K	58° Flood

Delivered lumens will vary depending on CCT, optic and finish

PRODUCT IMAGES & DIMENSIONS



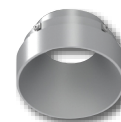
4" Iolite Can-less Round Trimless Downlight Trim



BB
Black



BZ
Bronze



HZ
Haze



MPW
Bright White

Item Number

NIOC-4RTLNDNCBB = Black Finish
NIOC-4RTLNDNCBZ = Bronze Finish
NIOC-4RTLNDNCBZ = Bronze Finish
NIOC-4RTLNDNCBZ = Haze Finish
NIOC-4RTLNDNCMPW = Matte Powder White Finish

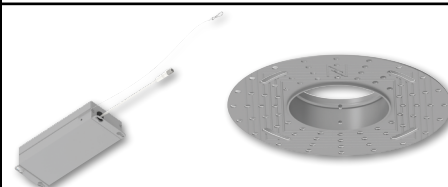
2" & 4" Iolite Can-less LED Module



Color Temperature

NIOC-24LED927X = 2700K
NIOC-24LED930X = 3000K
NIOC-24LED935X = 3500K
NIOC-24LED940X = 4000K
NIOC-24LED9CDX = Comfort Dim (3100K-2000K)

Driver Box & Trimless Mud Plate



Description

NJCB-12 = 12W Driver Box / 120VAC input / Triac or ELV dimming

NIOC-TLMR-4R = Trimless Mud Ring for 4" Iolite Can-less

Example: **NIOC-4RTLNDNCMPW / NIOC-24LED930X / NJCB-12 / NIOC-TLMR-4R** = 4" Iolite Can-less Round Trimless Downlight Trim, Matte Powder White finish, 3000K LED Module, 12W Driver Box, Trimless Mud Plate

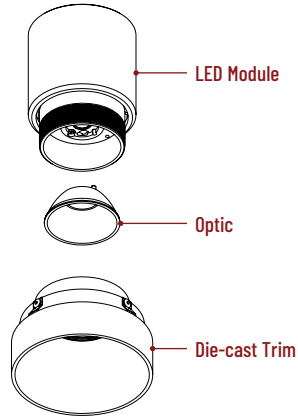
Iolite Can-less Accessories




4" Iolite Can-less Round Trimless Downlight

Type
Project
Catalog No.
Notes

FIELD CHANGEABLE OPTICS

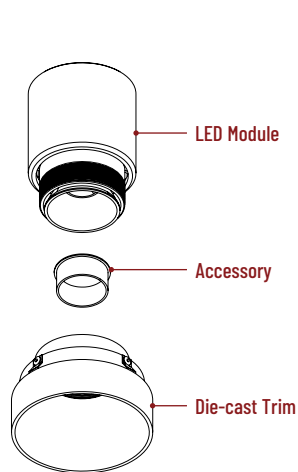
Iolite luminaires include spot, narrow flood and flood optics. Optics can be changed in the field by removing LED module from die-cast trim. Optional frosted and TIR optics are also available.





			
	Frosted Optics	Premium TIR Optics	Suction Cup
	NIO-REFL38FR NIO-REFL60FR	60° Optic 73° Optic NIO-REFLTIR15 NIO-REFLTIR25	22° Optic 26° Optic NIO-TLSUCTION
	Optic assembly includes optional frosted lens.	TIR optics are not compatible with Comfort Dim LED modules or hex cell louver accessory.	Assist removing trimless downlight from finished ceiling after installation.

TRIM ACCESSORIES

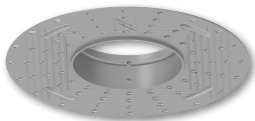
Iolite accessories can be added at any point in the design process. Accessories easily install between LED module and die-cast trim. Luminaire will accommodate (1) hex louver and (1) collar accessory, no accessory holder required.



			
	Translucent Decorative Collar	Opaque Collar Snoot	Hex Cell Louver
	NIO-AS14(color) NIO-AS19(color) NIO-AS26(color) Color: AM (amber), BLU (blue), FR (frosted), R (red)	5/8" length 3/4" length 1" length	NIO-AS14WH 5/8" length / warm white finish NIO-AS19MPWH 3/4" length / bright white finish NIO-AS19WH 3/4" length / warm white finish NIO-AS26WH 1" length / warm white finish
	Translucent collars color the aperture with the specified color while producing white general light. Collars are available in different lengths. Use to add interest, create a theme, match a theme or define a space.	Opaque snoot greatly reduces aperture brightness while preserving light output.	NIO-HC Black Hex cell louver subtly reduces aperture brightness by reducing light output by about 20%. Hex cell louver is <u>not</u> compatible with TIR optics.

TRIMLESS MUD RING

4" Iolite trimless has no exposed trim flange and the result is a minimalist knife edge appearance. A trimless mount mud ring is installed after the drywall and a professional drywall finisher floats the ceiling to blend in the mud ring.



Mud Ring

NIOC-TLMR-4R Round Mud Ring

Mounts trimless downlight with no exposed flange and no extension beyond ceiling plane. Mud ring attaches to drywall.
Outside Diameter: 7.35"
Cut out Diameter: 3.625"

MOUNTING ACCESSORIES

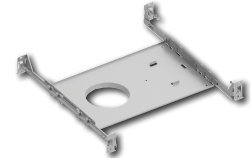
Iolite canless luminaires are ready to be installed out of the box. Additional mounting accessories can be used to assist during installation or extend length between driver box and luminaire.



Quick Connect Extension Cables

NCA-EW-4 4' Cable
NCA-EW-10 10' Cable

Use to extend the length between luminaire and driver box. Can be connected together to create custom lengths. Maximum length between luminaire and driver is 40'.



New Construction Frame-In w/ Collar

NFC-R375
New construction frame-in can be used to assist installing can-less recessed downlighting.

PHOTOMETRICS

4" Iolite Can-less Round Trimless Adjustable Slot

Type

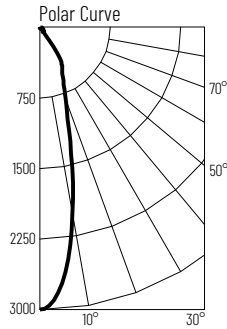
Project

Catalog No.

Notes

Test Information

Test Number: NTR6305R1
 Part Number: NIOC-4RTLND40XMPW
 Beam Spread: 27° Spot
 Lumens: 1111lm
 Wattage: 11.68W
 Efficacy: 95lpw
 CCT / CRI: 4000K / 90 CRI
 Spacing Criteria (0°-180°): 0.46
 Spacing Criteria (90°-270°): 0.46



Illuminance at a Distance

Distance from Luminaire	FC at Nadir	Beam Diameter
4'	187fc	1'-11"
6'	83.3fc	2'-10"
8'	46.9fc	3'-10"
10'	30fc	4'-8"
12'	20.8fc	5'-8"

Zonal Lumen Summary

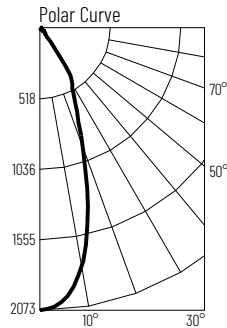
Zone	Lumens	% Luminaire
0-30	863	77.6
0-40	1020	91.8
0-60	1089	97.9
0-90	1111	100
90-180	0	0
0-180	1111	100

Candela Table

Vertical Angles	Candela
0	3000
5	2726
15	1248
25	584
35	255
45	55

Test Information

Test Number: NTR6301R1
 Part Number: NIOC-4RTLND40XMPW
 Beam Spread: 37° Narrow Flood
 Lumens: 1117lm
 Wattage: 11.68W
 Efficacy: 96lpw
 CCT / CRI: 4000K / 90 CRI
 Spacing Criteria (0°-180°): 0.62
 Spacing Criteria (90°-270°): 0.62



Illuminance at a Distance

Distance from Luminaire	FC at Nadir	Beam Diameter
4'	130fc	2'-8"
6'	57.6fc	4'
8'	32.4fc	5'-5"
10'	20.7fc	6'-8"
12'	14.4fc	8'-1"

Zonal Lumen Summary

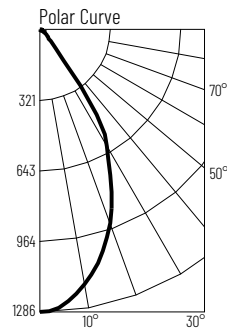
Zone	Lumens	% Luminaire
0-30	851	76.2
0-40	1017	91
0-60	1093	97.8
0-90	1117	100
90-180	0	0
0-180	1117	100

Candela Table

Vertical Angles	Candela
0	2073
5	2007
15	1366
25	628
35	296
45	56

Test Information

Test Number: NTR6297R1
 Part Number: NIOC-4RTLND40XMPW
 Beam Spread: 58° Flood
 Lumens: 1113lm
 Wattage: 11.68W
 Efficacy: 95lpw
 CCT / CRI: 4000K / 90 CRI
 Spacing Criteria (0°-180°): 0.88
 Spacing Criteria (90°-270°): 0.88



Illuminance at a Distance

Distance from Luminaire	FC at Nadir	Beam Diameter
4'	80.4fc	4'-5"
6'	35.7fc	6'-8"
8'	20.1fc	8'-11"
10'	12.9fc	11'-1"
12'	8.9fc	13'-4"

Zonal Lumen Summary

Zone	Lumens	% Luminaire
0-30	770	69.2
0-40	1000	89.8
0-60	1085	97.5
0-90	1113	100
90-180	0	0
0-180	1113	100

Candela Table

Vertical Angles	Candela
0	1286
5	1256
15	1072
25	772
35	390
45	66

Lumen Output Multipliers

Color Temperature: 2700K (0.88), 3000K (0.92), 3500K (0.96), 4000K (1.00), Comfort Dim (0.81)

Finish Multipliers

Finish: Black (0.82), Bronze (0.82), Haze (0.9), Bright White (1.00)