

NFRC-R4W3TW / NFRC-R6W3TW

4" & 6" Fire Rated Can-less Regressed LED Downlight with Selectable CCT

Two-Hour Fire Listing to UL 263 and ASTM E119

Source: 12W or 15W

1200lm or 1500lm

PRODUCT DESCRIPTION

Fire-rated can-less recessed LED downlights are ETL listed, tested and certified to UL 263 & ASTM E119 for 2-hour fire rating.

Wafer design allows luminaires to be installed in shallow plenums and includes a selectable five color temperature switch.

Multi-piece construction provides an extra layer of protection to prevent the spread of fire above the ceiling within a two-hour rating.

FEATURES

- **ETL Listed and Certified** to UL 263 & ASTM E119 for 2-Hour Fire Rating
- Multi-piece construction provides an extra layer of protection and prevents the spread of fire
- No housing required - IC Airtight rated
- Easy installation for remodel or new construction applications
- Quick disconnect for easy installation and wiring
- Delivering up to 1500 lumens
- Five color temperatures in each fixture (2700K / 3000K / 3500K / 4000K / 5000K)
- 120V input; Triac or ELV dimming
- 5-year limited warranty
- cETLus Listed for Wet Locations

SPECIFICATION

Construction: Steel construction with powder coated finish. Regressed lens with sharp baffle cuts reduces aperture brightness. Luminaire with spring clips for easy installation. Gasket included for airtight and wet location listing without additional caulking.

Air Flow Restriction: Luminaire restricts airflow from room into ceiling plenum to <2CFM (cubic feet per minute) in accordance with ASTM 283 airtight requirements.

Clearance: IC rated luminaires are rated for direct contact with insulation (not spray foam insulation), no minimum clearance is required.

Junction Box: Pre-wired junction box includes quick connect to LED fixtures for ease of installation. Junction box includes two 1/2" trade size knockouts and snap on cover with 6" quick connect wire. Luminaire includes 10" quick connect wire. Maximum of 4 No. 12 AWG through branch circuit conductor suitable for 75°C permitted in box.

Mounting: No housing is required, two tensions steel spring clips secure luminaire to ceiling. Accommodates ceiling thicknesses from 1/2" to 1-1/2". Listed for use in two hour fire-rated ceilings.

ELECTRICAL

Input Voltage: 120VAC

Lumens / Wattage: 1200lm / 12W or 1500lm / 15W

Color Temperature: Selectable CCT: 2700K / 3000K / 3500K / 4000K / 5000K (Note: Preset to 3000K)

Color Rendering Index: 90+ CRI

Beam Spread: 112° Wide Flood

Operating Temperature: 0-25°C

Dimming: Dimmable down to 10% with phase (Triac or ELV dimmer)

[Click Here](#) or check complete dimmer list at www.NoraLighting.com in the "Compatibility" page under "Resources" tab.

OPTIONAL ACCESSORIES

NF-R246: Universal New Construction Frame-In for 4" & 6"

NFC-R430: New Construction Frame-In with Collar for 4"

NFRC-EW-4: 4' Extension Cable

NFRC-EW-20: 20' Extension Cable

NEPK-23LEDUNV: 23W Emergency with Remote Test Switch

NEPKA-20/23LEDRTS: Ribbon Test Switch for NEPK-23LEDUNV

Emergency: Luminaire is compatible with NEPK-23LEDUNV (ordered separately). Remote mounted battery operates luminaire for 90 minute emergency operation with a fully charged battery. Emergency includes remote test switch, ribbon test switch accessory (NEPKA-20/23LEDRTS) ordered separately.

LABELS AND LISTINGS

- cETLus Listed to UL 1598, CAN/CSA C22.2, & Wet Locations
- [cETLus Listed and Certified for 2-Hour Fire Rating to UL 263, ASTM E119, & CAN/ULC S101](#)
- [5-Year Limited Warranty](#)
- ENERGY STAR certified
- Certified to the high efficacy requirements of California Title 24 JA8-2025



Type

Project

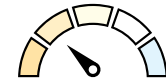
Catalog No.

Notes

Performance Data

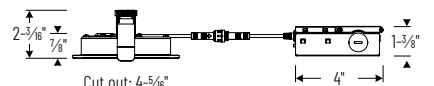
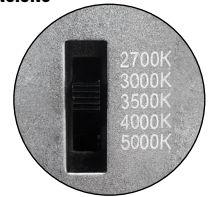
Part Number	4" Lumens	6" Lumens	CCT
NFRC-RXW3TW	1132lm	1376lm	2700K
NFRC-RXW3TW	1169lm	1409lm	3000K
NFRC-RXW3TW	1213lm	1461lm	3500K
NFRC-RXW3TW	1232lm	1500lm	4000K
NFRC-RXW3TW	1219lm	1496lm	5000K

PRODUCT IMAGES AND DIMENSIONS



Selectable CCT

Five position sliding switch
27K / 30K / 35K / 40K / 50K



Cut out: 4-5/16"

4"

2-3/8"

1-3/8"

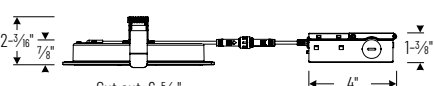
4"

2-3/4"

5"

NFRC-R4W3TWMPW

4" Fire Rated Can-less Regressed Downlight



Cut out: 6-5/16"

6"

2-3/8"

1-3/8"

4"

2-3/4"

7-3/16"

NFRC-R6W3TWMPW

6" Fire Rated Can-less Regressed Downlight

4" & 6" Fire Rated Can-less Regressed LED Downlight with Selectable CCT

Description

NFRC-R4W3TWMPW = 4" Regressed LED Downlight with Selectable CCT, 1200lm / 12W, White Finish

NFRC-R6W3TWMPW = 6" Regressed LED Downlight with Selectable CCT, 1500lm / 15W, White Finish

Optional Accessories

Description

NF-R246 = Universal New Construction Frame-In for 4" and 6"

NFC-R430 = New Construction Frame-In with Collar for 4" only

NFRC-EW-4 = 4' Extension Cable

NFRC-EW-20 = 20' Extension Cable

NEPK-23LEDUNV = 23W Emergency LED Driver w/ Remote Test Switch

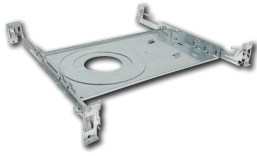
NEPKA-20/23LEDRTS = Ribbon Test Switch for NEPK-23LEDUNV

Example: **NFRC-R6W3TWMPW** = 6" Fire Rated Can-less Regressed LED Downlight with Selectable CCT, 1500lm / 15W, White Finish

NFRC-R4W3TW / NFRC-R6W3TW

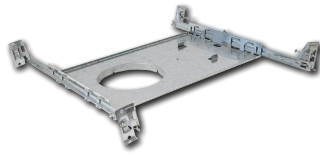
4" & 6" Fire Rated Can-less Regressed LED Downlight with Selectable CCT Accessories

Type	_____
Project	_____
Catalog No.	_____
Notes	_____



Universal New Construction Frame-In for 4" and 6" Downlights

NF-R246 for 4" and 6"
New construction frame-in can be used to assist installing can-less recessed downlighting. Helps indicate wiring location and cutting guide.



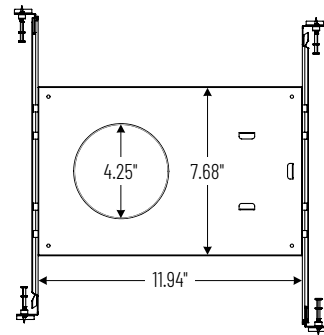
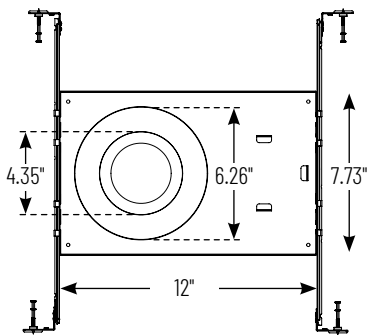
New Construction Frame-In with Collar for 4" Downlight

NFC-R430 for 4" only
New construction frame-in can be used to assist installing can-less recessed downlighting.



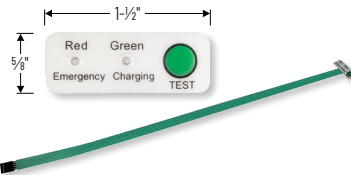
Quick Connect Extension Linkable Cables for 4" Downlight

NFRC-EW-4 4' Cable
NFRC-EW-20 20' Cable
Use to extend the length between luminaire and driver enclosure. Can be connected together to create custom lengths. Maximum length between luminaire and driver is 40'. For longer remote driver remote run length, consult factory.



23W Emergency LED Driver with Remote Test Switch

NEPK-23LEDUNV
120-277V Emergency LED driver operates luminaire for 90 minute emergency operation with a fully charged battery. Requires 24 hours to charge the battery.



Ribbon Test Switch for NEPK-23LEDUNV

NEPKA-20/23LEDRTS
Ribbon test switch replaces remote test switch included with emergency driver. Double sided tape is pre-installed.

PHOTOMETRICS

4" Fire Rated Can-less Regressed LED Downlight with Selectable CCT

Type

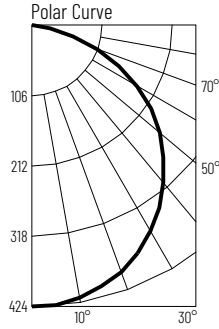
Project

Catalog No.

Notes

Test Information

Test Number: NTR6694R1
 Part Number: NFRC-R4W3TWMPW
 Beam Spread: 109° Wide Flood
 Lumens: 1132lm
 Wattage: 11.84W
 Efficacy: 96lpw
 CCT / CRI: 2700K / 90 CRI
 Spacing Criteria (0°-180°): 1.26
 Spacing Criteria (90°-270°): 1.24



Illuminance at a Distance

Distance from Luminaire	FC at Nadir	Beam Diameter
4'	26.5fc	11'-5"
6'	11.8fc	17'
8'	6.6fc	22'-8"
10'	4.2fc	28'-5"
12'	3fc	34'-1"

Zonal Lumen Summary

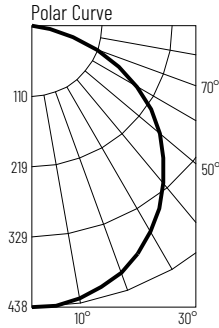
Zone	Lumens	% Luminaire
0-30	271	24
0-40	450	39.8
0-60	910	80.4
0-90	1132	100
90-180	0	0
0-180	1132	100

Candela Table

Vertical Angles	Candela
0	424
5	423
15	407
25	377
35	332
45	276

Test Information

Test Number: NTR6693R1
 Part Number: NFRC-R4W3TWMPW
 Beam Spread: 109° Wide Flood
 Lumens: 1169lm
 Wattage: 11.84W
 Efficacy: 99lpw
 CCT / CRI: 3000K / 90 CRI
 Spacing Criteria (0°-180°): 1.26
 Spacing Criteria (90°-270°): 1.24



Illuminance at a Distance

Distance from Luminaire	FC at Nadir	Beam Diameter
4'	27.4fc	11'-5"
6'	12.2fc	17'
8'	6.9fc	22'-8"
10'	4.4fc	28'-5"
12'	3fc	34'-1"

Zonal Lumen Summary

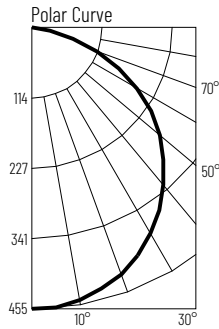
Zone	Lumens	% Luminaire
0-30	280	24
0-40	465	39.8
0-60	940	80.4
0-90	1169	100
90-180	0	0
0-180	1169	100

Candela Table

Vertical Angles	Candela
0	438
5	437
15	420
25	389
35	343
45	285

Test Information

Test Number: NTR6692R1
 Part Number: NFRC-R4W3TWMPW
 Beam Spread: 109° Wide Flood
 Lumens: 1213lm
 Wattage: 11.84W
 Efficacy: 102lpw
 CCT / CRI: 3500K / 90 CRI
 Spacing Criteria (0°-180°): 1.26
 Spacing Criteria (90°-270°): 1.24



Illuminance at a Distance

Distance from Luminaire	FC at Nadir	Beam Diameter
4'	28.4fc	11'-5"
6'	12.6fc	17'
8'	7.1fc	22'-8"
10'	4.6fc	28'-5"
12'	3.2fc	34'-1"

Zonal Lumen Summary

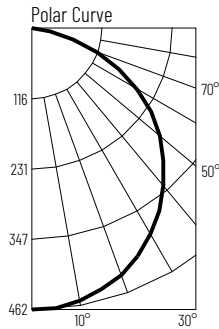
Zone	Lumens	% Luminaire
0-30	291	24
0-40	483	39.8
0-60	975	80.4
0-90	1213	100
90-180	0	0
0-180	1213	100

Candela Table

Vertical Angles	Candela
0	455
5	453
15	436
25	403
35	356
45	296

Test Information

Test Number: NTR6691R1
 Part Number: NFRC-R4W3TWMPW
 Beam Spread: 109° Wide Flood
 Lumens: 1232lm
 Wattage: 11.84W
 Efficacy: 104lpw
 CCT / CRI: 4000K / 90 CRI
 Spacing Criteria (0°-180°): 1.26
 Spacing Criteria (90°-270°): 1.24



Illuminance at a Distance

Distance from Luminaire	FC at Nadir	Beam Diameter
4'	28.9fc	11'-5"
6'	12.8fc	17'
8'	7.2fc	22'-8"
10'	4.6fc	28'-5"
12'	3.2fc	34'-1"

Zonal Lumen Summary

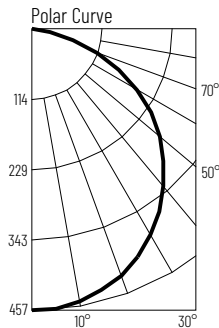
Zone	Lumens	% Luminaire
0-30	295	24
0-40	490	39.8
0-60	990	80.4
0-90	1232	100
90-180	0	0
0-180	1232	100

Candela Table

Vertical Angles	Candela
0	462
5	460
15	443
25	410
35	362
45	301

Test Information

Test Number: NTR6690R1
 Part Number: NFRC-R4W3TWMPW
 Beam Spread: 109° Wide Flood
 Lumens: 1219lm
 Wattage: 11.84W
 Efficacy: 103lpw
 CCT / CRI: 5000K / 90 CRI
 Spacing Criteria (0°-180°): 1.26
 Spacing Criteria (90°-270°): 1.24



Illuminance at a Distance

Distance from Luminaire	FC at Nadir	Beam Diameter
4'	28.6fc	11'-5"
6'	12.7fc	17'
8'	7.1fc	22'-8"
10'	4.6fc	28'-5"
12'	3.2fc	34'-1"

Zonal Lumen Summary

Zone	Lumens	% Luminaire
0-30	292	24
0-40	485	39.8
0-60	980	80.4
0-90	1219	100
90-180	0	0
0-180	1219	100

Candela Table

Vertical Angles	Candela
0	457
5	455
15	438
25	405
35	358
45	298

PHOTOMETRICS

6" Fire Rated Can-less Regressed LED Downlight with Selectable CCT

Type

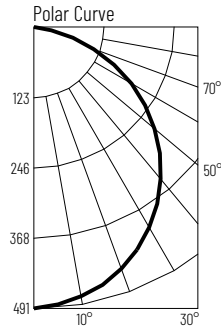
Project

Catalog No.

Notes

Test Information

Test Number: NTR6698R1
 Part Number: NFRC-R6W3TWMPW
 Beam Spread: 112° Wide Flood
 Lumens: 1376lm
 Wattage: 14.23W
 Efficacy: 97lpw
 CCT / CRI: 2700K / 90 CRI
 Spacing Criteria (0°-180°): 1.28
 Spacing Criteria (90°-270°): 1.3



Illuminance at a Distance

Distance from Luminaire	FC at Nadir	Beam Diameter
4'	30.7fc	11'-11"
6'	13.6fc	17'-10"
8'	7.7fc	23'-10"
10'	4.9fc	29'-8"
12'	3.4fc	35'-7"

Zonal Lumen Summary

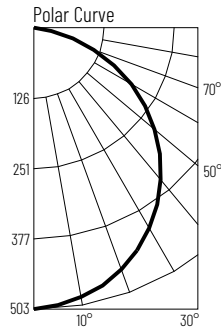
Zone	Lumens	% Luminaire
0-30	315	22.9
0-40	525	38.1
0-60	1071	77.8
0-90	1376	100
90-180	0	0
0-180	1376	100

Candela Table

Vertical Angles	Candela
0	491
5	489
15	472
25	440
35	390
45	327

Test Information

Test Number: NTR6698R1
 Part Number: NFRC-R6W3TWMPW
 Beam Spread: 112° Wide Flood
 Lumens: 1409lm
 Wattage: 14.23W
 Efficacy: 99lpw
 CCT / CRI: 3000K / 90 CRI
 Spacing Criteria (0°-180°): 1.28
 Spacing Criteria (90°-270°): 1.3



Illuminance at a Distance

Distance from Luminaire	FC at Nadir	Beam Diameter
4'	31.4fc	11'-11"
6'	14fc	17'-10"
8'	7.9fc	23'-10"
10'	5fc	29'-8"
12'	3.5fc	35'-7"

Zonal Lumen Summary

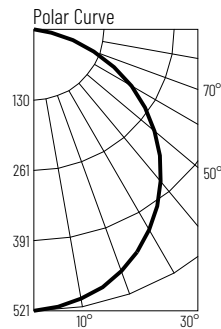
Zone	Lumens	% Luminaire
0-30	323	22.9
0-40	537	38.1
0-60	1097	77.8
0-90	1409	100
90-180	0	0
0-180	1409	100

Candela Table

Vertical Angles	Candela
0	503
5	501
15	484
25	450
35	400
45	335

Test Information

Test Number: NTR6697R1
 Part Number: NFRC-R6W3TWMPW
 Beam Spread: 112° Wide Flood
 Lumens: 1461lm
 Wattage: 14.23W
 Efficacy: 103lpw
 CCT / CRI: 3500K / 90 CRI
 Spacing Criteria (0°-180°): 1.28
 Spacing Criteria (90°-270°): 1.3



Illuminance at a Distance

Distance from Luminaire	FC at Nadir	Beam Diameter
4'	32.6fc	11'-11"
6'	14.5fc	17'-10"
8'	8.2fc	23'-10"
10'	5.2fc	29'-8"
12'	3.6fc	35'-6"

Zonal Lumen Summary

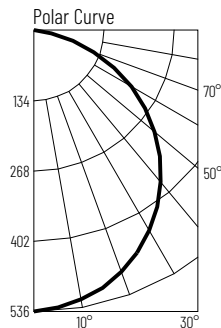
Zone	Lumens	% Luminaire
0-30	335	22.9
0-40	557	38.1
0-60	1137	77.8
0-90	1461	100
90-180	0	0
0-180	1461	100

Candela Table

Vertical Angles	Candela
0	521
5	519
15	502
25	467
35	414
45	348

Test Information

Test Number: NTR6696R1
 Part Number: NFRC-R6W3TWMPW
 Beam Spread: 112° Wide Flood
 Lumens: 1501lm
 Wattage: 14.23W
 Efficacy: 106lpw
 CCT / CRI: 4000K / 90 CRI
 Spacing Criteria (0°-180°): 1.28
 Spacing Criteria (90°-270°): 1.3



Illuminance at a Distance

Distance from Luminaire	FC at Nadir	Beam Diameter
4'	33.5fc	11'-10"
6'	14.9fc	17'-10"
8'	8.4fc	23'-10"
10'	5.4fc	29'-8"
12'	3.7fc	35'-7"

Zonal Lumen Summary

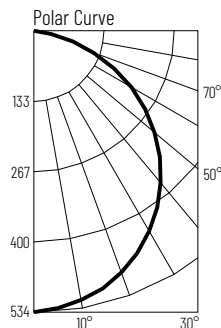
Zone	Lumens	% Luminaire
0-30	344	22.9
0-40	572	38.1
0-60	1168	77.8
0-90	1501	100
90-180	0	0
0-180	1501	100

Candela Table

Vertical Angles	Candela
0	536
5	534
15	515
25	480
35	426
45	357

Test Information

Test Number: NTR6695R1
 Part Number: NFRC-R6W3TWMPW
 Beam Spread: 112° Wide Flood
 Lumens: 1496lm
 Wattage: 14.23W
 Efficacy: 105lpw
 CCT / CRI: 5000K / 90 CRI
 Spacing Criteria (0°-180°): 1.28
 Spacing Criteria (90°-270°): 1.3



Illuminance at a Distance

Distance from Luminaire	FC at Nadir	Beam Diameter
4'	33.4fc	11'-11"
6'	14.8fc	17'-10"
8'	8.3fc	23'-10"
10'	5.3fc	29'-8"
12'	3.7fc	35'-7"

Zonal Lumen Summary

Zone	Lumens	% Luminaire
0-30	343	22.9
0-40	570	38.1
0-60	1165	77.8
0-90	1496	100
90-180	0	0
0-180	1496	100

Candela Table

Vertical Angles	Candela
0	534
5	532
15	525
25	478
35	424
45	356